

FOOD PLANTS ALONG THE SEASHORE.

Besides winter feeding, described elsewhere in this series, birds frequenting the seashore may be catered to by growing plants which produce their favorite foods, according to the United States bureau of biological survey. Where the coast is rocky and the soil of ordinary character, conditions are little different from those inland, and except in relation to exposure there need be no especial preference given in the choice of plants. It is worth mentioning, however, that several trees and shrubs are better to withstand the winds so prevalent on the coast. These include three species of juniper, common barberry, English thorn, hybrid crabapple, European and American mountain ashes, smooth and staghorn sumacs, privets, buckthorn and red-berried elder. Where the soil is chiefly sand, and that often shifting, conditions are not suited to many plants. Selection may be made, however, from the following, all of which are known to thrive in such surroundings:

For seed eaters.—Beach grasses, Japanese smartweed, and sunflower.
For fruit eaters.—Bayberry, sea buckthorn, sand cherry, beach plum, cranberries and bearberry.

Votes for Women.

A Harvard grad, who might be called Harold, and a sweet young person who didn't take football seriously sat in the Yale Bowl on that Saturday. It was at that tragic moment for the Crimson when Casey had been called back after a 78-yard run for a touchdown because there was holding in the line. The grad was nursing a pent-up explosion.

"Oh, Harold," cried the young person; "why are they going to make him do it over? Did he run too far?"

The grad simmered more dangerously.

"No, Ethel," he said, "it wasn't that. Somebody sneezed."

There Are Others.

Physician—But have you ever had any experience as a nurse?

Applicant—Why, I never did anything else since I was a child.

Physician—Indeed! And what is your specialty?

Applicant—Nursing trouble.

Fixing for Kinfolks.

When one kind of kinfolks are coming out to dinner, wife calls up the grocery man and says:

"Have you some nice friers? Well, send me two of the smallest ones you have. If your celery is real nice you may send me a bunch of it. The last I got was so old that I had to throw it away. And, let me see, I want a small bottle of olives. Have you some nice lettuce? Well send me fifteen cents' worth, and I want fifteen cents' worth of tomatoes, and will you pick out nice ones, please? The last tomatoes you sent me weren't very good. I believe that is all. No, I want a pound of walnuts, the smallest bottle of cherries you have, a package of gelatin and a bottle of double cream."

But if a different kind of kinfolks are coming, she says to the grocery man: "Send me a loaf of bread and a can of hominy." You see, she already has some spuds in the house.—Fort Worth Star-Telegram.

Everybody Doing It.

"It surely does beat all!"

The thin carpenter knew when the fat plumber made the above exclamation that it invited an inquiry, so he asked:

"What beats all?"

"I went to a theater the other night and heard a nutty monologue."

"Yes?"

"And then I went into another place and heard a campaign orator shooting off his gab."

"Uh huh."

"And in the next place, which was a moving-picture theater, blamed if I didn't run up against the arena scene from 'Quo Vadis.'"

"I must say I can't just get the drift of your talk."

"Can't you see? Everywhere I went I found somebody throwing the bull." —Youngstown Telegram.

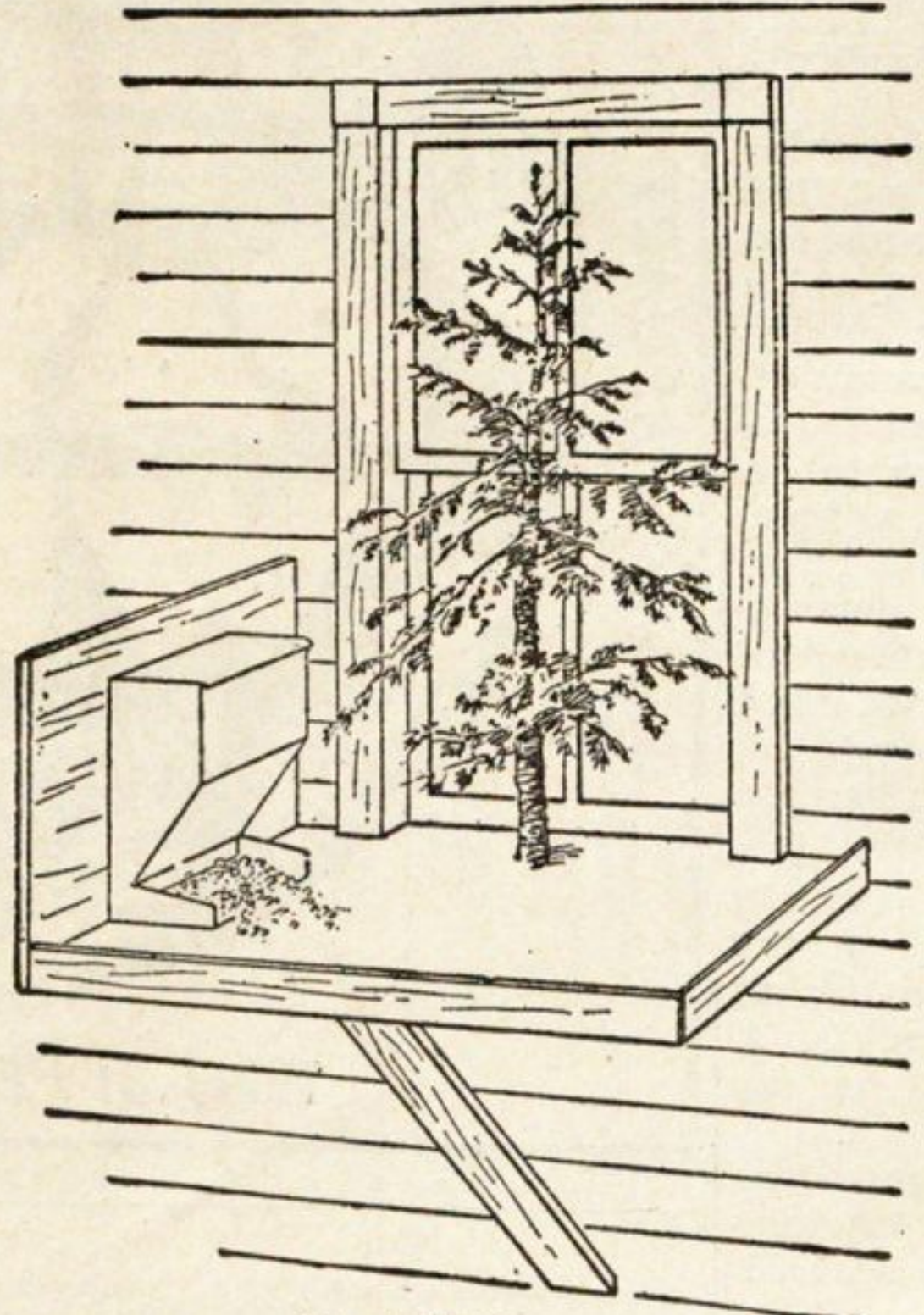
It is not known that many of the people who protested so vehemently that Harry Thaw should be set free, have applied to have him for a near neighbor.

Believing that they should read newspapers and keep in touch with the progress of the world, many people settle down and devour three columns on Harry Thaw's latest escapade.

That explosion at the Ney Jersey munition plant was perhaps another of those purely accidental affairs that come off on schedule time as planned.

INVITE the BIRDS to be NEIGHBORS

PREPARED BY THE UNITED STATES DEPARTMENT OF AGRICULTURE



Food Shelf.



Coconut Larder.

FEEDING AND FOOD SHELTERS.

Birds may be attracted about the homestead by furnishing them with an abundance of food. It is important to note that an ample supply of food prior to and during the nesting season tends to increase the number of eggs laid and also the number of broods in a season. Bird food may be supplied in two ways—by planting trees, shrubs and herbs which produce seeds or fruits relished by birds, and by exposing food in artificial devices. The most familiar phase of the latter method is winter feeding.

Artificial Food Supply.

During the season when the natural food supply is at its lowest ebb birds respond most readily to our hospitality. Winter feeding has become very popular, and the result has been to bring about better understanding between birds and humankind.

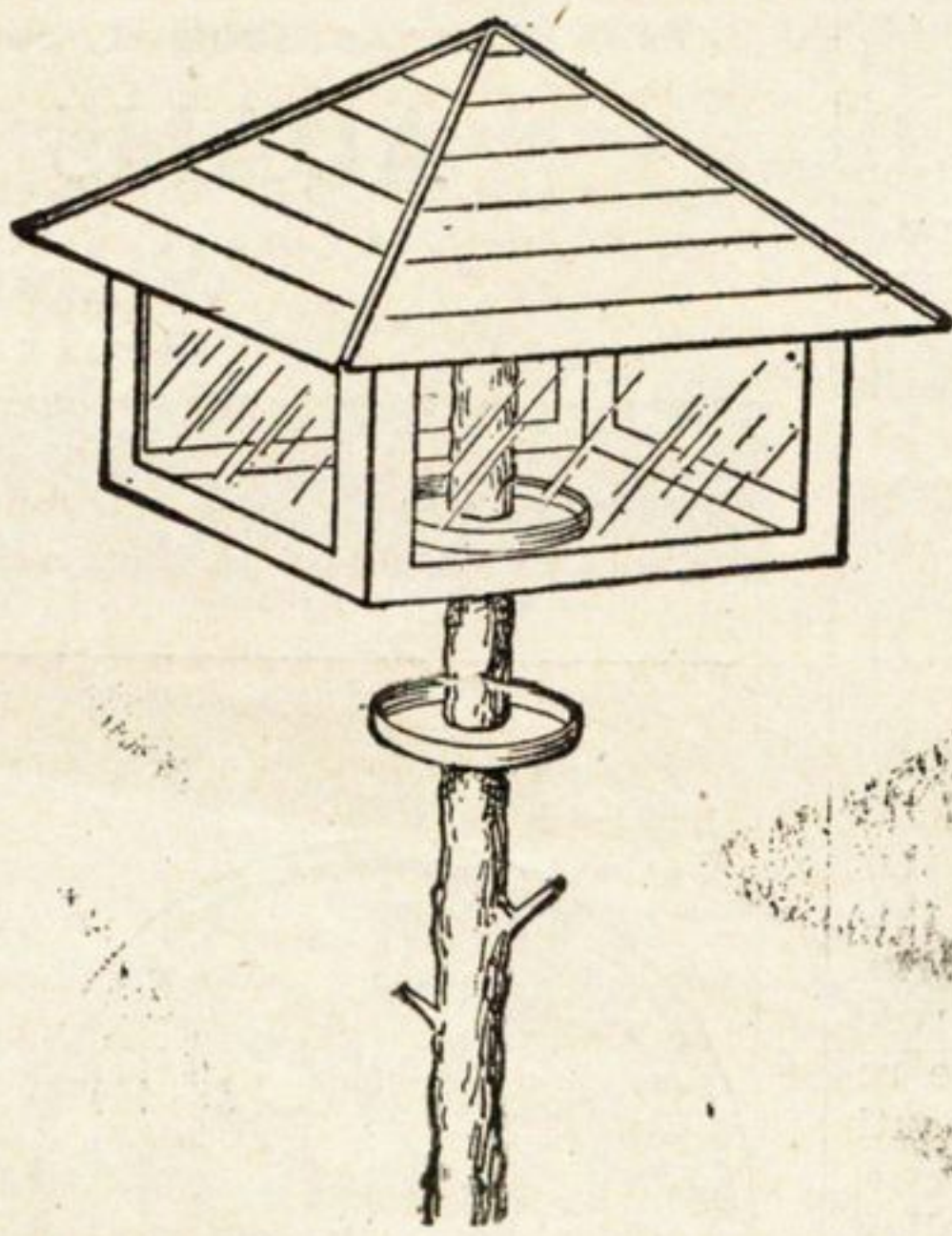
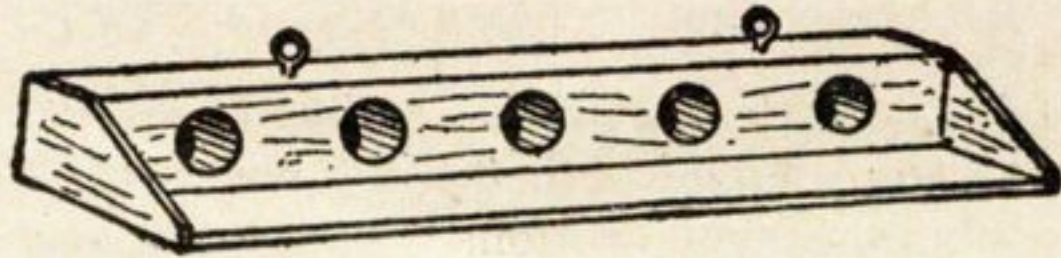
The winter foods commonly used include suet or other fat, pork rinds,

of food hoppers and food houses. The food hoppers in common use for domestic fowls are adapted to the feeding of birds, and some special forms are now manufactured for wild birds.

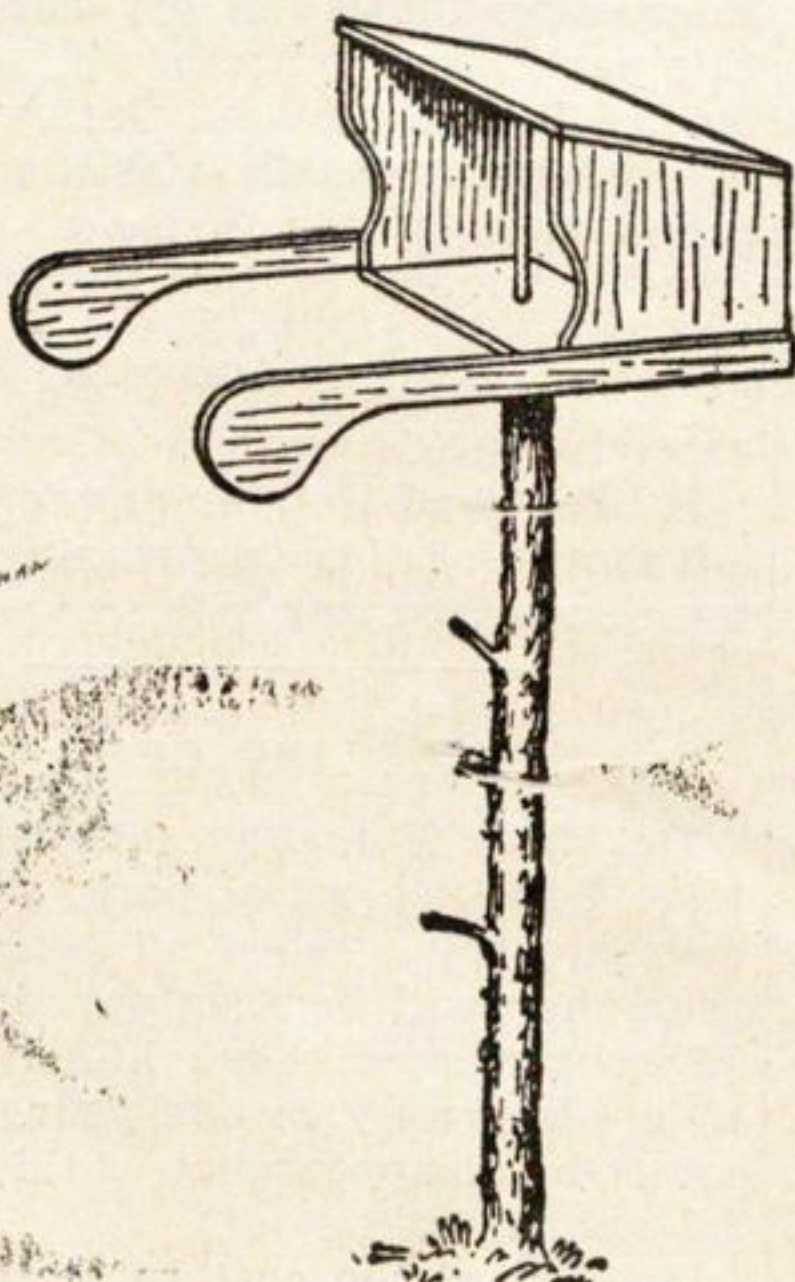
The food house is a permanent structure, with solid roof, and glass on one or more sides to permit observations (Fig. 4). The food trays it contains are entirely sheltered from the weather. In one style this result is obtained by mounting the house on a pivot and furnishing it with vanes (Fig. 5) which keep the open side always away from the wind.

Game birds and sparrows may be provided with feeding places by erecting low hutches or making wigwam-like shocks of corn or grain sheaves under which food may be scattered. The opening should be to the south.

Those who desire to have birds about their homes should not feel that their power to attract them is gone when winter is over. Winter feeding easily passes into summer feeding.



Food House.



Feeding Stick.
Food House on Pivot.

bones with shreds of meat, cooked meats, meal worms, cut-up apples, birdseed, buckwheat, crackers, crumbs, coconut meat, cracked corn, broken dog biscuits or other bread, hemp seed, millet, nut meats of all kinds (especially peanuts), whole or rolled oats, peppers, popcorn, pumpkin or squash seeds, raw or boiled rice, sunflower seed and wheat.

The methods of making these supplies available to birds are as varied as the dietary itself. A device very commonly used is the food tray or shelf (Fig. 1). This may be put on a tree or pole by a window or at some other point about a building, or strung upon a wire or other support on which it may be run back and forth. The last device is useful in accustoming birds to feed nearer and nearer a comfortable observation point. A fault with food shelves is that wind and rain may sweep them clean and snow may cover the food. These defects may be obviated in part by adding a raised edge about the margin or by placing the shelf in the shelter of a wall or shielding it with evergreen branches on one or more sides.

Feeding devices not affected by the weather are preferable. An excellent

Perhaps the entire campaign must be a living.

Coming Events at Community House

- February 2. Billy Burke in "Peggy."
- February 9. Mary Pickford in "Hulda from Holland." Cartoon: "Bobby Mumps."
- February 16. Dorothy Gish and Owen Moore in "Little Meena's Romance."
- February 23. Howard Estabrooke in "Officer 666."
- February 24. Count Ilya Tolstoy.

DIED AT DUNNING.

Ernest Martin, who was recently sent to the Dunning asylum, died there, Tuesday morning. An inquest will be held today.

STORK'S COLUMN

Mr. and Mrs. Robert J. Scully announce the birth of a son, on Monday, January 22.

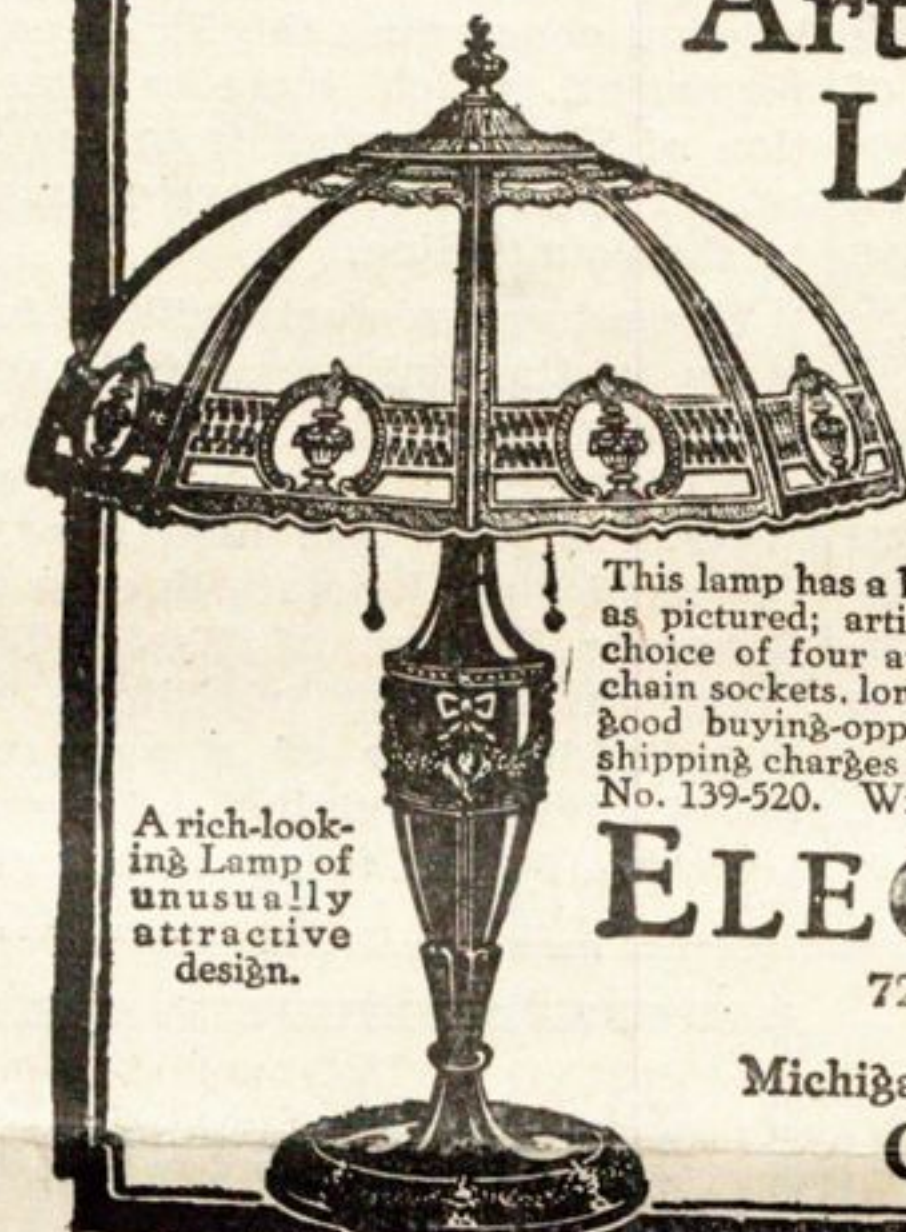
PROFESSOR JUDD LECTURES.

There was an important educational meeting at the Community house, Wednesday evening, January 24, under the auspices of the board of education, and the direction of Superintendent Rhodes. Professor Charles H. Judd, of the School of Education of the University of Chicago, spoke on the subject of "Junior High School." The "Junior High School" is spoken of as the next important step in educational activities.

MIDWINTER CLEARANCE SALE

UNCOMMON opportunities to save money on Table Lamps and Floor Lamps, Silk Shades of exclusive design, Boudoir Lamps and Electrical Household Appliances. As an example of the savings you may expect, note this

Art Glass Table Lamp-Special for This Sale \$12



A rich-looking lamp of unusually attractive design.

This lamp has a beautifully designed 18-inch art glass shade as pictured; artistically fashioned metal standard in your choice of four attractive finishes; equipped with two pull-chain sockets, long silk-covered cord and plug. An unusually good buying-opportunity at this special price, \$12. Sent, shipping charges collect, on receipt of price. Specify Lamp No. 139-520. Write instructions plainly.

ELECTRIC SHOP
72 West Adams Street
and
Michigan and Jackson Boulevards
CHICAGO

Wm. D. McJunkin Advertising Agency, Chicago

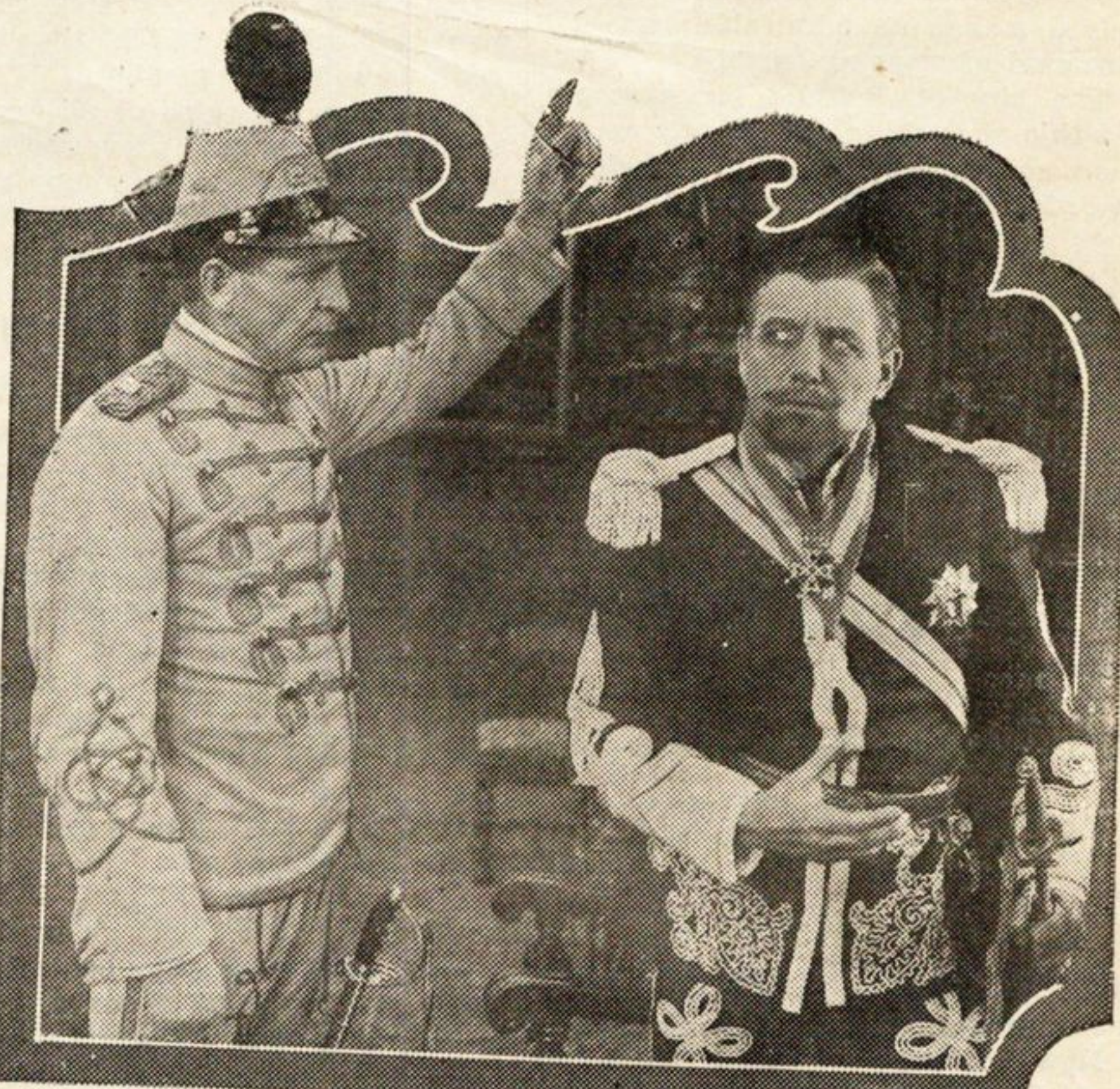
MONDAY JANUARY 29

Matinee at 3 o'clock

Don't Miss The First Showing Of

"The Secret Kingdom"

The First Showing of Episodes One and Two



Scene from "THE LAND OF INTRIGUE"

First Episode of

"THE SECRET KINGDOM"

Featuring CHARLES RICHMAN and DOROTHY KELLY

At The NEW

Wilmette Theatre

1120 Central Avenue