



Dedication and Open House

☞ SUNDAY, MAY 23rd, 1971 ☞

Dedication and Opening Celebrations *for MELBOURNE PLACE*

DEDICATION SERVICE — 11:00 A.M.

Guest speaker — The Rev. Norman Berner, Assistant to the
President of The Eastern Canada Synod.

Greetings — by His Worship, Mayor Bob Rutherford.

Presentation of the keys at the close of the service.

DISTRICT CELEBRATION SERVICE — 3:30 P.M.

Guest speaker — The Rev. Herb Gastmeier, Pastor of Zion,
Stratford, and Dean of the Western District.

Lector — The Rev. Calvin Diegel, former pastor of the
congregation.

Greetings — by The Hon. Eric Winkler, M.L.A.

COMMUNITY CELEBRATION SERVICE — 7:30 P.M.

Guest speaker — The Rev. Malcolm Finlay, Minister of Knox
United Church.

Lector — The Rev. Wallace Minke, former pastor of the
congregation.

Greetings from the Grey-Owen Sound Health Unit.

The Rev. Joe Vaughan, Past President of
The Owen Sound Ministerial.

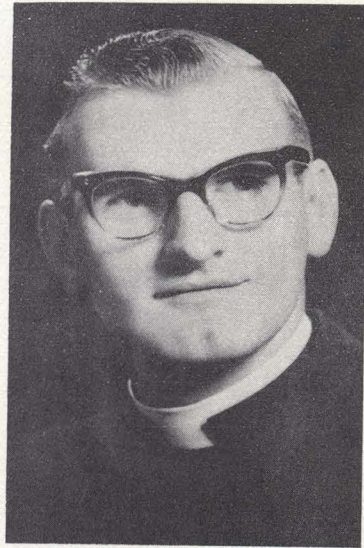
Refreshments will be served by the ladies of the congregation
following each service. All are invited. There will be
open house at Melbourne Place throughout the day.

ACKNOWLEDGEMENTS

Sincere appreciation is extended to those who are participating in these Services of Dedication; to the ladies who have planned and prepared and are serving the refreshments; to those who have kindly placed flowers in the church and in the nursing home; to the Grey-Owen Sound Health Unit for advice and guidance; to those who have made donations of labour and money, especially Mr. John H. Guse who gave several month's free labour; to those who have given the encouragement of their moral support; and to the members of the parish who have been patient with a pastor who has been very much occupied in the establishment of Melbourne Place to the neglect of some normal parish functions.

A MESSAGE FROM THE PASTOR

*The Lutheran Church of
Our Saviour to-day has
declared itself willing to
expend patience, energy and
Christian love in the care
of aging in our community.*



We are grateful for the interest the community has shown in this project. The publicity has been more extensive and more favourable than we expected or deserved. We hope we haven't been over-sold. We are workers, but we are not miracle workers. Our only hope is that as many residents as possible will respond to what we are trying to do at Melbourne Place by enjoying some of the most contented years of their life. To some a nursing home is a place to live when there is no other. To some it means nutritious food. To some it means companionship. To some it means help with getting around or with a medical problem. Beyond this, we hope Melbourne Place will mean a purpose to live. (Come to think of it, that is something of a miracle in a society which so thoroughly adores youthfulness and productivity.) The secret, to my way of thinking, lies in the attitudes entertained by the staff toward their work and toward the residents. Here again, we have been blessed beyond what we have deserved.

My first parish was near a city that had two general hospitals, one operated by the Roman Catholic Church. We had a goodly number of parishioners who had been a patient at both hospitals. Invariably they would tell us that if they had a choice, they would choose St. Mary's every time. Their reasons had little to do with equipment or procedures, important as these may be. The difference was in the feel of the human touch. The symbolic value of the presence of the sisters and the sensitivity and kindness they instilled and encouraged in the staff could be felt. If something similar happens at our nursing home, we shall be pleased and satisfied.

