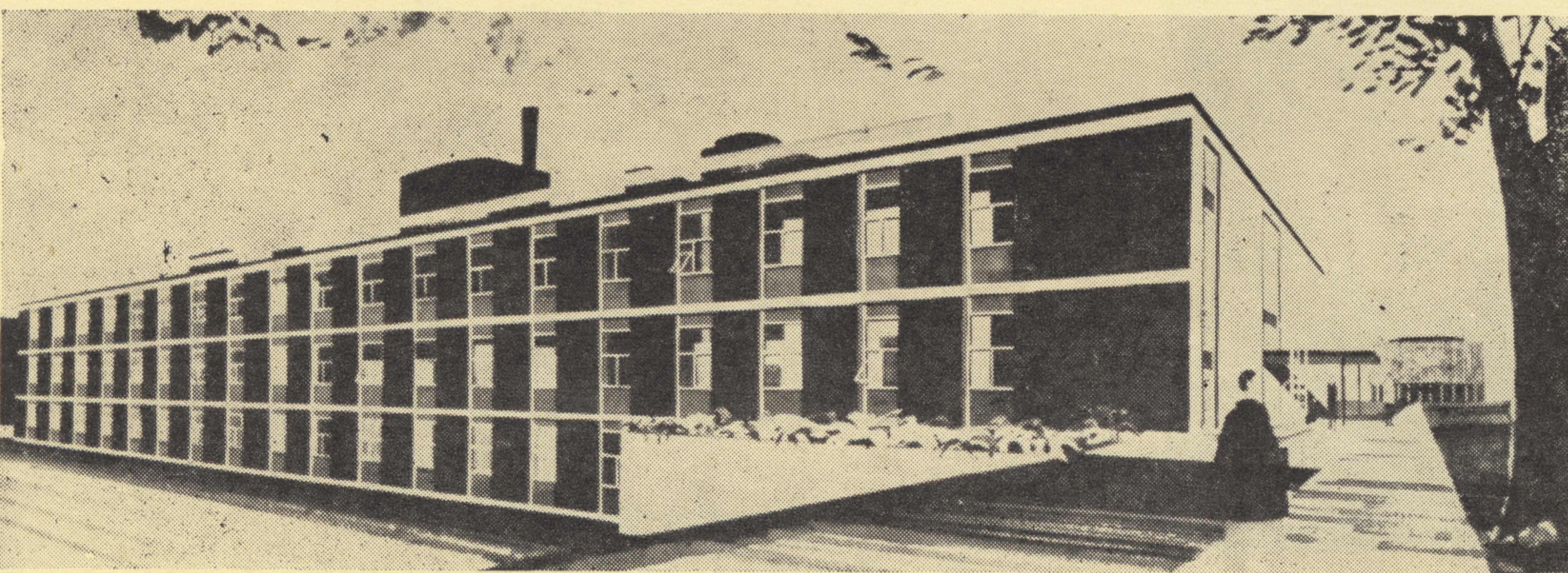




WATERLOO COLLEGE AND ASSOCIATE FACULTIES

Across Canada, the name of Waterloo College and Associate Faculties is becoming linked with a "new idea" in Canadian higher education — the Co-operative Plan.

It is a plan for progress, an uncommon plan in which business and industry form a close working partnership with higher education. It is a plan with many advantages; to students, to business and industrial firms, and to the educational institution.



*Architects' sketch
of Chemistry Building,
Waterloo College
and Associate Faculties
(in process of construction)*

the co-operative plan

What is the Co-operative Plan? Briefly, it is an educational program based on alternating periods of theory and practice. Specifically, students spend alternating periods at college and in business or industry.

Under the plan, the time, place and nature of students' employment is not left to chance. Students enrolled in cooperative programs are placed in selected firms for practical application and observation — in fields related to their college courses. "In-plant" work in no way replaces the academic program; rather, it supplements it. A satisfactory employment record is necessary for students to progress to the succeeding college period.

For co-operating firms, the alternating periods of study and work mean that students working in pairs provide the equivalent of one individual's full-time service — rather than part-time service on a "summer job" basis. Students fulfill the responsibilities of a regular job at regular rates of pay.

For the college, each dollar invested in plant and equipment provides accommodation for twice the usual number of students. Facilities are in use the year around. Increased operating income makes possible higher faculty salaries and up-to-date teaching and research equipment.