

**Find Prosperity Lengthens Life**

People Possessed of Wealth Live Longer, Research Bureau Reports — Poor Die Young

Possession of wealth lengthens life, according to Ralph Cary Fletcher, head of the research work for the Federation of Social Agencies of Pittsburgh and Allegheny county.

Fletcher reveals that studies have shown conclusively that people living in the slums die earlier than those living in prosperous neighborhoods. The reason, he says, is the difference in environment and health conditions.

**IMPROVES CONDITIONS**

The average man residing in the prosperous section of a city may expect to live 61 years, while his brother in the so-called "blighted districts" can hope for only 51 years of life.

Fletcher believes the solution to this problem lies in raising health, social and economic standards in the poorer sections of town.

"It is reasonable," he said, "to expect that improved economic and social conditions with adequate public health measures in the blighted areas would raise the expectancy of life in these districts in a parity with that in the more prosperous areas."

**Leaflet Bomber**



A member of the crew of a British bombing plane demonstrates the method of dropping propaganda leaflets on enemy territory. The leaflets are slipped through a chute in the bomb-bay. They scatter as they fall. These planes recently dropped their verbal bombs on Vienna, Prague and greater Germany.

**Gardening ....**

**THREE DANGERS**  
Professional gardeners warn against three things, planting too deeply, too early and too close. Nasturtiums, peas, beans, corn and such large seeds should go in about an inch or so and be planted at the least three or four inches apart. They seed like alyssum, poppy and onion is merely pressed into the soil. Before sowing mix with a little sand to help spread the sowing more evenly.

**COMBINATIONS**  
One can do wonders with flowers alone, but still more amazing results will follow where we combine flowers skillfully with grass, winding walks, shrubbery and bits of stone work. In this combining, however, we must take care not to reproduce a jungle. Flowers and the shrubbery must not be crowded that they become spindly and weak. Little flowers must not be hidden by tall things like full size marigolds, cosmos or zinnias. Beds also must be so arranged that we can keep down weeds and remove fading foliage. Above all, we must remember that unless we are very skilful, it is best to use a fair amount of lawn as a foreground for our flowers. Lawns are almost vital in creating garden pictures.

**FIRST VEGETABLES**  
First vegetables to be planted in the Spring are spinach, all sorts of lettuce, radish and peas.

Second planted vegetables will be carrots, beans, cabbage, potatoes and similar things. These will resist a fair amount of cold.

Tender vegetables include corn, melons, cucumbers and tomatoes. Nothing is to be gained by planting these before danger of frost is over.

With most vegetables it is advisable to make at least three sowings a week or two apart in order to spread the harvest that much longer over the season.

**Sunday School Lesson**

LESSON XII  
THE SEPULCHRE: TRIUMPH OVER DEATH.—Matthew 27: 57-28: 15.

**GOLDEN TEXT**—Now hath Christ been raised from the dead, the first-fruits of them that are asleep. 1 Cor. 15: 20.

**THE LESSON IN ITS SETTING**  
Time.—Christ's burial occupied some time before six p.m. on Friday, April 7; the visit of the women to the sepulchre occurred early Sunday morning, April 9, A.D. 30.

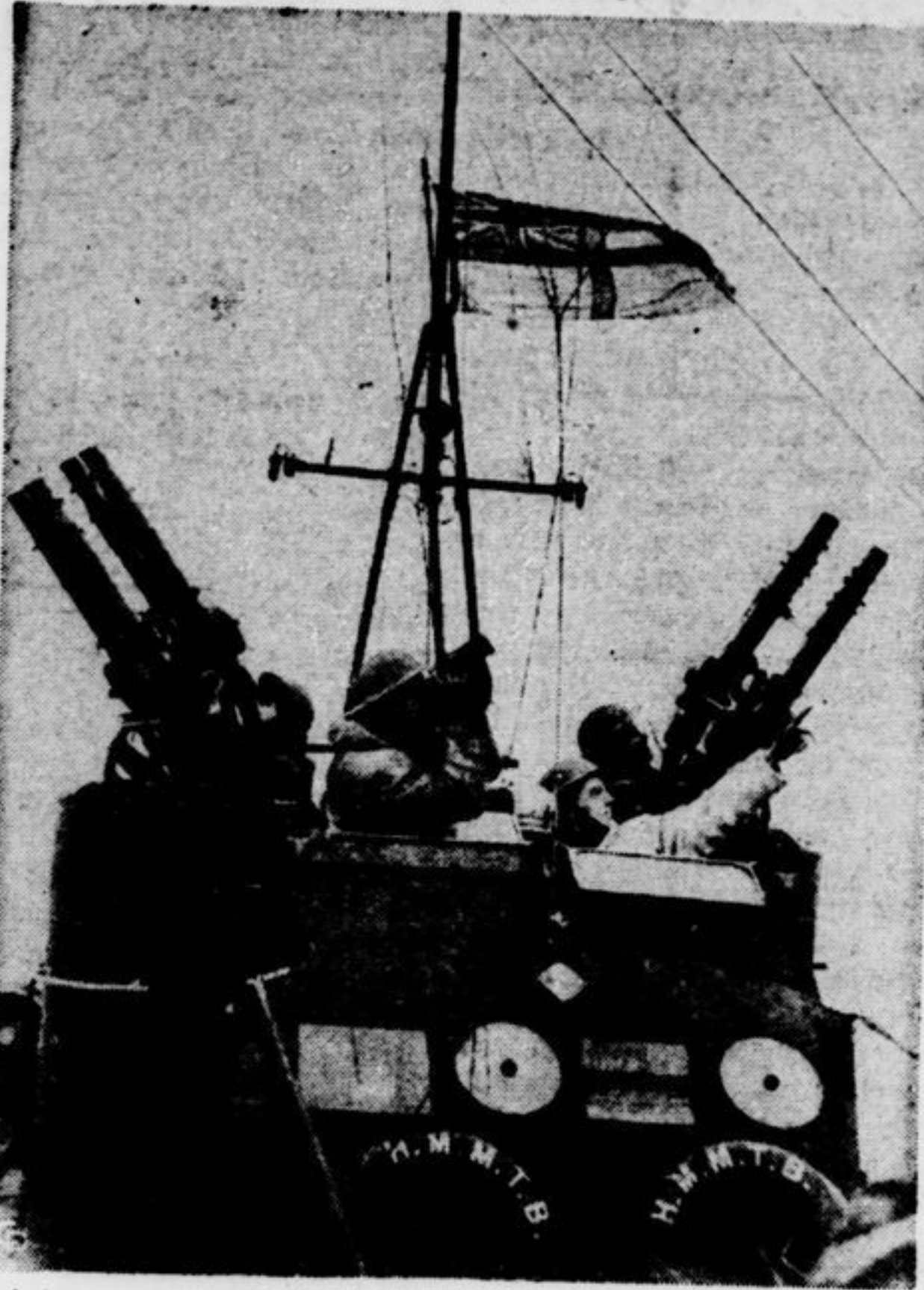
**Place**.—Calvary and the nearby tomb of Joseph of Arimathea were both a short distance outside the walls of Jerusalem.

57. And when even was come, there came a rich man from Arimathea, named Joseph, who also himself was Jesus' disciple: 58. this man went to Pilate, and asked for the body of Jesus. Then Pilate commanded it to be given up. Joseph of Arimathea was a man of means of refined mind, a member of the Jewish Sanhedrin, and held in good repute among his fellow counsellors. It was this man with his mind already enlightened by Jesus, and his heart drawn to him, who stood under the cross of Christ. Remorse or his past shrinking smote him, he forthwith sought the body of Jesus to bury it in his own grave, prepared for his own costly burial.

**Laid in the Sepulchre**  
59. And Joseph took the body, and wrapped it in a clean linen cloth, 60. and laid it in his own new tomb, which he had hewn out in the rock; and he rolled a great stone to the door of the tomb, and departed. The body was laid in a loculus in the tomb, formed by a slab of stone, placed across one side of the tomb so as to form a coffin-like recess behind it. The entombment of our Lord is a remarkable fulfillment of Isa. 53: 9, which foretold that the Messiah would make his grave "with the rich in his death."

61. And Mary Magdalene was there, and the other Mary, sitting over against the sepulchre. The Mary mentioned here together with Mary Magdalene, must be Mary the mother of James and Joseph (see v. 56). These were the women who had ministered to Jesus throughout the three years of his public ministry.

**Britain's Multi-Aircraft Guns Offer Triple Threat**



A brace of multiple anti-aircraft machine guns look skyward from the bridge of one of the British navy's newest racing motor torpedo boats, of which Britain now has a large fleet on coastal duty. The boats, capable of great speed, are armed with torpedoes for use against surface craft; depth charges for dealing with submarines and these guns for taking care of attack from the air.

**Christ And The Birds**

Before the first faint hope of dawn could lay its slender fingers on the purple sky, Christ issued from His tomb on Easter Day And passed the sleeping soldiers softly by.

The birds, so early waking from their sleep, Roused in their nests the way He went along; Knowing the promise that He rose to keep, They meant to greet their Master with a song.

He laid His fingers to His lips, and turned To indicate the guards, heads drowsy-bent, And then He smiled, but in His eyes there burned Rich pleasure at the little birds' intent.

So, long ago, Christ walked before the light In Joseph's garden, heralded by none; Watched over by the feathered host at night, He went His way. The miracle was gone.

— JOHN GALLINARI WHIDDING

**Movie-Going Jury Humored**

"May we have the evening off?" a jurymen asked at Montreal last week when the trial of Romeo Fossault on a charge of murder was adjourned for the day.

"I suppose you want to go to the movies," said Mr. Justice Wilfrid Lazare.

"Yes," the juror said.

"Well, if the police captain can pick a picture that is fitting for you to see, you can go," the judge decided after the request was discussed with counsel.

2. And behold, there was a great earthquake; for an angel of the Lord descended from heaven, and came and rolled away the stone, and sat upon it. 3. His appearance was as lightning, and his raiment white as snow; 4. and for fear of him the watchers did quake, and became as dead men. 5. And the angel answered and said unto the women, Fear not ye; for I know that ye seek Jesus, who hath been crucified. 6. He is not here; for he is risen, even as he said. Come, see the place where the Lord lay.

Had the tomb remained sealed and guarded, the world would have had stronger grounds for denying the resurrection and would have claimed as it does today, with far greater force, that our Lord's subsequent appearances were merely spiritualistic.

**Farm Forum**

(Conducted by Prof. Henry C. Bell, of the Ontario Agricultural College, Guelph, assisted by other members of the O.A.C. faculty)

Q. I have a 50-acre farm of sandy soil. As I have not enough barnyard fertilizer for both places, I am hauling the fertilizer to the sandy soil and intend getting lime for clay land. Will you please let me know if this is a wise thing to do? If so, will you please advise me what quantities of lime to use? If there is a better method of enriching the soil for this year's crop will you please let me know, if it is not more expensive? — S. R. Dufferin-Simcoe.

A. You are doing well to have the manure put on the lighter soil. It may be that the heavier clay soil would benefit materially from a light application of manure.

Regarding applying lime to clay soil, I would say that you should have the soil tested first to find if lime is required. If the soil is already neutral or alkaline, it is a loss of time and money to put lime on it. If you will have a sample of soil taken according to the instructions on pages 29 to 32 of the enclosed pamphlet and forward the same to the Dept. of Chemistry, at O.A.C., Guelph, we will have it tested and will then be able to let you know whether or not lime is required. Lime is not a manure or a plant-food, it is simply a soil conditioner.

Q. I wonder if you would give me some information regarding sulphur as an acidifier of soil. I have considerable difficulty with alkaline water, although aluminum sulphate will correct it. I have been told that sulphur has a longer lasting effect than aluminum sulphate, but am not familiar with the properties of sulphur.

Any advice you would give me in this matter will be greatly appreciated. W. G. York Co.

A. I would say that Flowers of Sulphur used at rates of 300 to 600 lbs. per acre will produce desirable acidity in controlling scab on potatoes. If the Sulphur is broadcast just after the land is plowed, and before discing, Sulphur can be added most effectively. One experimenter advises that on soils that lack Sulphur-oxidizing bacteria, it is advisable to use inoculated Sulphur.

During 1938 the nine dredges operated in the Yukon Consolidated Gold Corporation handled 8,550,000 cubic yards of gravel, which yielded 60,655 fine ounces of gold and 14,418 fine ounces of silver.

**POP—Picking Up**



I HAVEN'T SEEN A SIGN OF MY HUSBAND SINCE WE STARTED SPRING CLEANING!

HAVE YOU LOOKED IN THE VACUUM CLEANER?