

Grand Trunk Railway TIME-TABLE

Trains leave Durham at 7.05 a.m., and 3.45 p.m. Trains arrive at Durham at 11.20 a.m., 2.30 p.m., and 8.45 p.m. EVERY DAY EXCEPT SUNDAY

Canadian Pacific Railway Time Table

Trains will arrive and depart as follows, until further notice:- P.M. A.M. A.M. P.M. 8.10 11.10 Ar. Toronto Lv. 7.45 5.25

GRAND TRUNK RAILWAY SYSTEM

"WESTERN FAIR" LONDON RETURN TICKETS

at reduced fares to London from stations in Ontario, Belleville, Scotia Junction and South or West thereof.

Time Table Changes

Effective September 12th Information now in agents hands

Panama Pacific Exposition

Reduced fares to San Francisco, Los Angeles and San Diego.

Tickets and full information on application to agents.

W. Calder, Town Agent, Phone 3a J. Towner, Station Agent Phone 18

CANADIAN PACIFIC WESTERN FAIR LONDON

SEPTEMBER 10 to 18, 1915 REDUCED FARES

To London from stations in Ontario Belleville, Havelock and West to Sault Ste. Marie, White River and North Bay inclusive, also from Detroit, Mich.

Extra Train Service Also Special Low Fares From Principal Points on Certain Dates

Fast Time, Convenient Train Service, Modern Equipment between Montreal, Ottawa, Toronto, Detroit and Chicago.

Particulars from Canadian Pacific Ticket Agents or write M. G. Murphy, D.P.A. Toronto.

R. Macfarlane, Town Agent E. A. Hay, Station Agent

DURHAM PLANING MILLS

The undersigned begs to announce to residents of Durham and surrounding country, that he has his Planing Mill and Factory completed and is prepared to take orders for

SASH, DOORS and all kinds of House Fittings

Shingles and Lath Always on Hand At Right Prices.

Custom Sawing Promptly Attended To

ZENUS CLARK DURHAM - ONTARIO

A garden party, under the auspices of the Durham branch of the Women's Institute, will be held on the grounds of Mr. W. Weir, Glenelg, on Friday, September 10. The proceeds will be given in aid of the motor ambulance to be given by the Grey County Women's Institute. Admission 10c. A good program will be rendered, and refreshments served on the grounds.

CANADA AT WAR

CANADA HAS NOW 150,000 MEN UNDER ARMS AND FULLY EQUIPPED

Very Shortly the Dominion's Recruiting is as Brisk Today as It Has Been Since the War Began.

INCLUDING the 10,000 men on garrison and home duty in Canada, the Dominion has now under arms approximately 150,000 men. When the twelve new battalions reach England there will be roughly 100,000 men under arms in Europe, 40,000 men in training in Canada, 1,000 men at Bermuda, 500 men at St. Lucia, British West Indies; a Medical Corps at Cairo, Egypt, consisting of three stationary hospitals; and 10,000 men in Canada, garrisoning Halifax, Quebec, Esquimaux, and guarding canals, elevators, patrolling the Western boundary, and on duty at internment camps.

More Men if Needed. If there is another call for 50,000 reinforcements, the militia authorities anticipate no difficulty in getting the men. They state that recruiting



GEN. SIR SAM HUGHES, K.C.B., Minister of Militia. Sketch by McConnell.

during the last few weeks has been brisker than for months. In fact not since the outbreak of war has there been such enthusiasm and such a deluge of men willing to don khaki.

The Disposition of Troops. The following table shows approximately the number of Canadian troops raised, their disposition, and where they are at present located:

Table listing troop dispositions: Princess Patricia's Light Infantry (in France) 1,000; First Contingent (from Valcartier) (in France) 32,000; Second Contingent (in Britain) 20,000; Reinforcements (1st and 2nd Contingents), in England and France 22,000; 38th Royal Ottawa (in Bermuda) 1,100; Half Battalion (in St. Lucia) 500; Hospital, Medical, Veterinary, Engineers, etc. (Overseas) 5,000; Twelve Battalions (reinforcements) 15,000; 34 Battalion (raised or being raised) (in Canada) 40,000; 12 Batteries of Artillery (being raised) (in Canada) 2,000; Six Regiments Mounted Men (raised) (in Canada) 3,000; Men on garrison duty and Home Service (in Canada) 10,000.

Patricias Being Reorganized. Of the original Princess Patricia's Regiment, the first Canadian force to see fighting in France, less than 100 fighting men are left. However, the regiment is being reorganized and reinforcements are being sent at once which will bring this crack unit again up to strength.

It may be explained in connection with the above table that at the time when it looked as if Turkey would invade Egypt thirteen regiments of mounted rifles were raised in Canada, principally from the cowboys, plainsmen, and rough riders of the West. When the threatened Turkish invasion came to naught and the fight with the Ottoman Empire developed into siege work at the Dardanelles, the Mounted Rifles volunteered to go to Flanders as dismounted cavalry. Seven regiments are already in England. Six remain in Canada.

WHEAT PURCHASE IS IMPRACTICABLE

The proposition for the Dominion Government to purchase Canada's wheat crop finds no favor with Dr.

Magill, chairman of the Grain Commission. "The suggestion," he declared, "has been made by someone who failed to give proper thought to what he proposed. The Canadian Government could do no more with a 300,000,000 bushel wheat crop in the event of the British market being closed, than could private owners under the same circumstances. If the British market is glutted, the purchase of the crop by the Canadian Government would not help matters at all."

"Now what," he asked, "could the Canadian Government do with Western Canada's 300,000,000-bushel wheat crop? If the British market were closed to private owners, it would be just as effectively closed to the Canadian Government. The Government could no more market this wheat, in the face of a Russian glut of the British wheat market, than could the private parties now engaged in the business."

"What do the western men suggest?" Dr. Magill wanted to know. "Do they propose that Great Britain cease operations at the Dardanelles in order that Russian wheat will remain bottled up in Russia? Do they expect that in order to save the British market for Canadian wheat, Great Britain will withdraw her support from her Russian ally?"

"If they did do such a thing, they would prejudice Russia's cause, and consequently their own cause. When examined closely, the Calgary suggestion appears thoughtless."

GRAIN BLOCKADES NOT NOW POSSIBLE

Western Canada has harvested the greatest crop in its history. Energetic preparations have been made by the Government, the Grain Commission, and the railways to handle this bumper crop, and it is expected, despite the size and the rush this fall, that it will be marketed without the blockade or the car congestion which was a perennial occurrence before 1911. Speaking of the crop conditions as affecting Canada, Dr. Magill, chairman of the Grain Commission, says there was never a time in the history of the West when things were more ready for the successful handling of the big crop.

"This year," he said, "the grain commission has in service three big storage elevators for emergency purposes. These elevators are located at Calgary, Moose Jaw, and Saskatoon, and together can take care of 10,500,000 bushels of grain. "Ten million bushels does not seem to be much when one thinks of the big crop," the Commissioner explained, "but with such a margin of insurance, we are amply protected against loss by a blockade."

ALL EQUIPMENT FROM GOVERNMENT

It has been brought to the attention of the Department that units organized for overseas service are soliciting subscriptions from the public for the purchase of articles of equipment, band instruments, and for the creation of a regimental fund, and it has been reported that some units have charged an admission fee to witness parades, etc., for a similar purpose. It should be borne in mind that units of the Overseas Forces are supplied by the Department with everything necessary for their equipment, and it should not be necessary to appeal to the public for assistance, especially as there are many objects of a patriotic and philanthropic character to which the Canadian public have contributed most liberally. The practice above referred to does not commend itself to the Militia Council, and steps will be taken to prevent a continuance of the same, and no such thing as appeals for subscriptions will be permitted except by express permission obtained beforehand from the Militia Council.

NEW REGIMENTS TO GO TO ENGLAND

It has been decided to send to England as complete units twelve infantry battalions now in training in Canada. Two from the Maritime Provinces, one from Quebec, five from Ontario, two from Manitoba and Saskatchewan, and one each from Alberta and British Columbia. On the arrival of these troops in England, Canada's overseas force will number about one hundred thousand.

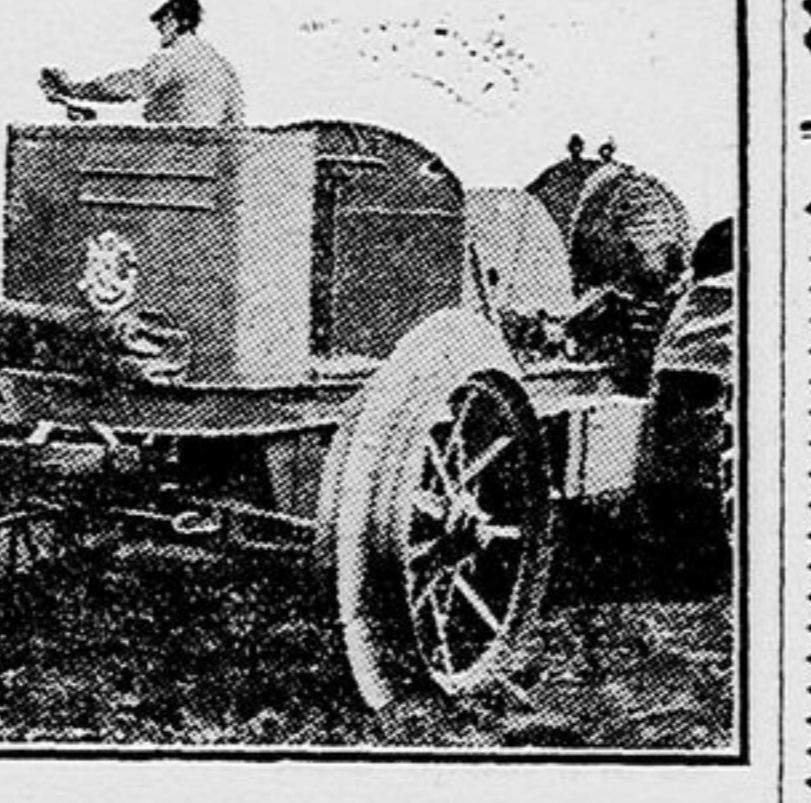
Scientific Farming

ELECTRIC PLOWING.

In Use in Germany, Where It is Beyond the Experimental Stage. By FRANK KOESTER. (Author of "Electricity For the Farm and Home.")

Plowing is the father of industries, the indispensable primary operation upon which civilization has depended from the earliest ages, and the plow is thus the most useful and necessary implement which has ever been designed by mankind for its own advancement. Without the plow agriculture is impossible, and without agriculture no industry can exist. Yet in spite of all the progress which has been made in mechanical arts and in the sciences the plow of today remains the same in principle as the plow of dozens of centuries ago. The furrow is still turned in the old way, and modern science has added nothing in principle to the plow except different means of drawing it across the field.

Farmers in Germany, where during the past fifteen years the steam plow has been used to a great extent, have made increasing use of the electrically operated plow, which is now far be-



MOTOR WAGON OF A SINGLE MOTOR PLOW SYSTEM.

yond the experimental stage and is in many respects superior to that drawn by steam or gasoline tractors, saving both time and money.

The electric plow, plowing four furrows at a time, is drawn rapidly back and forth across the field by cables operated by the motors. An average equipment of this kind will plow an acre in thirty minutes at a cost of 20 cents for the power consumed. A plowman following the single furrow behind his horses will be eight or ten times as long finishing the same field, with day after day of physical exhaustion for himself and his team. Yet up to the present time no electric plow has turned a furrow in the United States.

In the far west gasoline driven plows, often turning twenty furrows at once, are in use, but they are capable of being utilized only over immense tracts of land, while the electric plow is equally suited to large and small farms.

Electric plowing has been carried on in Germany for fifteen years, and great strides have been made, particularly in the last five years. Of the several systems employed the one and two motor systems are most extensively used. In both these systems the plow is pulled across the field by a cable wound on a drum.

In the single motor system on one side of the field the motor is mounted on a self propelled wagon, which automatically travels forward parallel with the motor wagon with each new furrow. The two motor system has two motors, one on each of two self propelled wagons, one of these replacing the anchor wagon. The one motor system is lower in first cost, but the other can be more readily adapted to the cultivation of any form of field.

Electric plowing has great advantages over that by gasoline or steam engines. With a steam plow, for instance, a great amount of coal and water must be taken to the field by teams and drivers which must be paid for. Electric plowing can be carried on in practically every kind of weather, even in the winter, when steam operated plows would freeze, and the electric plow can be used in soft or loamy soil where horses cannot work and on hilly ground.

As far as the cost of electric plowing is concerned, experience shows that it can be done cheaper per acre than by horses or steam. The field of electric plowing of today is found principally in Germany. It is an established fact that American agricultural machinery in its wide practical application is in most respects far superior to that of any foreign make, and should the domestic manufacturers devote themselves with the same skill to contriving apparatus for electric plowing it will be only a short time until our farmers recognize the advantages of the system. Electric plowing is not confined to farms of large acreage, but may be carried on to good advantage on farms of small size.

Value of Corn Stalks. More than two-thirds of the value of corn is on the ear and one-third in the stalk and blades, says the Farm and Fireside. The silo will save the third, which is usually as good as wasted. Why save only two-thirds of the crop?

Low Rations For Idle Horses. Lop off the ration of all kinds when the horses are doing little or nothing. They are too much like a man to stand heavy food while lying still.

Call at E. A. ROWE'S For all kinds of Bakery Goods Cooked and Cured Meats. OYSTERS AND FRUIT IN SEASON E. A. ROWE : Confectioner and Grocer

Spring Goods Have Arrived Come in and have a look at our new lines of Classic Shoes and Pumps for Ladies, Weston's and Eclipse for Misses and Children, Astoria and Brandon for Men, before selecting your next pair of footwear. Many other lines in stock for less money. Our prices on Spring goods are the same on most lines as they were last season. Hosiery for all classes, in many kinds, at close prices. Trunks, Suitcases, etc. in stock. Broken lines of boots that we are stocking again are offered at cut prices. Custom Work and Repairing Promptly Attended To The Down Town Shoe Store: J. S. McIlraith

Special Reduction Sale In order to reduce our general stock of Dry Goods, Groceries, Ready Mades, Blankets, Sheetting etc., we have decided to make a Special Reduction on Everything in stock, starting on SATURDAY, JANUARY 16, 1915. Intending purchases may rest assured of getting even better bargains than we offered last spring. A trial order will convince you. Come in and ask for prices. S. SCOTT Opposite the Old Stand Durham, Ontario

CLEARANCE SALE OF FIREWOOD AND SHINGLES Cedar \$1.50 per cord Elm 2.25 per cord No. 1 Shingles \$1.00 bunch No. 1 Shingles 3.75 square No. 2 Shingles .75 bunch No. 2 Shingles 2.50 square TERMS STRICTLY CASH C. J. Furber & Co. Queen Street - - Durham, Ont.

FEED FEED We have a good stock of Corn and Ground Feed on hand, that we are selling in ton lots at the following prices: American Corn, per 100 lbs. \$1.60 Chieftain Corn Feed, per ton \$30.00 Oats Shorts, per ton \$30.00 Bran, per ton \$28.00 Special prices in over five ton lots If you want good heavy mixed feed try our "Chieftain Corn Feed" it gives good satisfaction We Are In the Market for Any Quantity of Oats PHONES 4 and 28 The Rob Roy Cereal Mills Co. Oatmeal Millers.