

CANADIAN PACIFIC

WINTER TOURS
TO THE LAND OF
Sunshine and Summer Days

THE "CANADIAN"
FAST TIME BETWEEN
MONTREAL-TORONTO
DETROIT-CHICAGO

Particulars from C.P.R. Ticket Agents, or write M. G. Murphy, District Passenger Agent corner King and Yonge Streets, Toronto.
R. Macfarlane, Town Agent
E. A. Hay, Station Agent

GRAND TRUNK RAILWAY SYSTEM

DOUBLE TRACKS ALL THE WAY
TORONTO-CHICAGO
TORONTO-MONTREAL

The International Limited
Canada's Train of Superior Service
Leaves Toronto 4.40 p.m. daily, arrives Detroit 9.55 p.m. and Chicago at 8 a.m.

MORNING SERVICE
Leaves Toronto 8 a.m., arrives Detroit 1.45 p.m. and Chicago 8.40 p.m. daily.
LAST TRAIN OUT OF TORONTO AT NIGHT
Leaves 11.35 p.m., arrives Detroit 8 a.m. and Chicago 3 p.m. daily, assuring important connections with principal trains for Western States and Canada.

FOR MONTREAL
Leave Toronto 9 a.m., 8.30 p.m. and 11 p.m. daily. Berth reservations, etc. at G.T.R. ticket offices.
W. Calder, Town Agent, Phone 3a
J. Towner, Station Agent Phone 18

Canadian Pacific Railway Time Table

Trains will arrive and depart as follows, until further notice:--

P.M.	A.M.	P.M.	P.M.
3.00	6.20	LV. Walkerton Ar.	1.00 10.30
3.14	6.34	" Maple Hill "	12.43 10.13
3.24	6.43	" Hanover "	12.35 10.05
3.33	6.52	" Allan Park "	12.25 9.55
			A.M.
3.48	7.07	" Durham "	12.11 9.41
3.50	7.18	" McWilliams "	11.59 9.29
4.02	7.21	" Glen "	11.56 9.26
4.11	7.31	" Priceville "	11.46 9.16
4.25	7.45	" Saugeen J. "	11.35 9.05
5.55	11.20	Ar. Toronto LV.	7.45 5.05

R. MACFARLANE, - Town Agent

Grand Trunk Railway TIME-TABLE

Trains leave Durham at 7.15 a.m., and 2.45 p.m.
Trains arrive at Durham at 10.30 a.m., 1.50 p.m., and 8.50 p.m.
EVERY DAY EXCEPT SUNDAY
H. G. Elliott, A. E. Duff, G. P. Agent, D. P. Agent, Montreal, Toronto.
J. TOWNER Depot Agent
JAMES R. GUN, Town Agent

DURHAM PLANING MILLS

The undersigned begs to announce to residents of Durham and surrounding country, that he has his Planing Mill and Factory completed and is prepared to take orders for

SASH, DOORS
— and all kinds of —
House Fittings

Shingles and Lath
Always on Hand
At Right Prices.

Custom Sawing
Promptly At-
tended To

ZENUS CLARK
DURHAM - ONTARIO

You can not do better than attend BRITISH AMERICAN COLLEGE

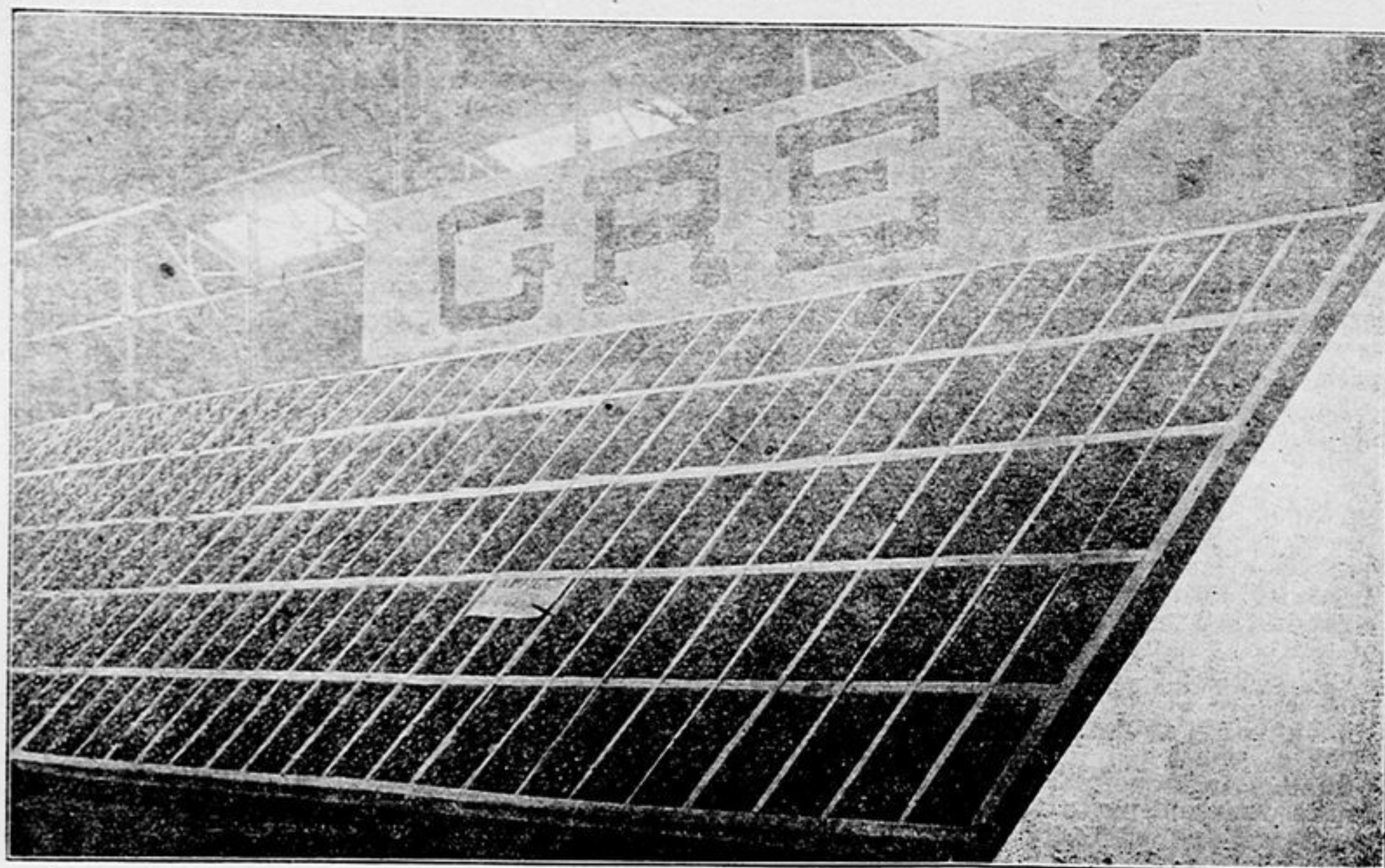
Yonge & McGill Streets, Toronto for a Business or Shorthand Course Fall Term is now open. We ask you to write for particulars. T. W. Wauchope, Principal.

Geo. Barbour of Hillsburg was accidentally shot in the foot when his fan shoe was taken for a rabbit.

Thos. Sample, a prominent Barwick township farmer, was accidentally killed when he was pierced through the chest by a bullet which his 12-year-old nephew was attempting to extract from a 32 calibre rifle.
Frank Merkley of Horning's met with a bad accident on Friday. He was working in a deep pit when the top of the pit fell in, burying him up to his shoulders. It took about one hour to release him. He was bruised and his legs badly hurt.

FACTS ABOUT GREY COUNTY

Issued by the Grey County Board of Agriculture



OUR APPLE EXHIBIT AT TORONTO, 1913

GREY COUNTY AGRICULTURE

There are 1,063,443 acres of assessed land in the rural portion of the County of Grey.

65.65 per cent. of this assessed land, or about 698,125 acres, is cleared.

63.5 per cent. of this cleared land is under crop, or 443,588 acres.

There are about 16,880 acres of orchard and fruit, 12,985 acres of summer fallow and 154,751 acres of pasture in the County.

69,921 acres of cleared land are not included in these figures.

Can the farmers of the County, with the assistance of the business men of the towns, find a way to make use of these unused areas?

× ×

In 1912 Grey County had 162,382 acres under hay and clover. This yielded at the rate of 1.44 tons per acre, or a total of 233,564 tons, with a market value of \$2,669,637. The yield of hay was small in 1913 on account of the cold, wet spring. Only 129,487 tons were harvested from 162,542 acres, or at the rate of .80 tons per acre. The value of this was \$1,294,900.

× ×

Grey had 20,315 acres of Fall Wheat in 1913. The total yield was 513,970 bushels, or at the rate of 25.3 yielding at the rate of 19.8 bushels per acre. The value of the 20,651 bushels was \$12,390.

× ×

22,954 acres of mixed grains sown in Grey in 1913 yielded 803,390 bushels, or at the rate of 35 bushels per acre. The total value was \$402,000.

× ×

Buckwheat yielded 150,612 bushels from the 10,387 acres sown in 1913. This was at the rate of 14.5 bushels per acre and gave a total value of \$75,000.

× ×

166 acres of Beans were sown in Grey in 1913 giving a yield of 14.2 bushels to the acre. The total yield was 2,357 bushels, with a value of \$2,300.

× ×

Corn for husking yielded at the rate of 60 bushels per acre in 1913. The 553 acres sown gave a yield of 33,180 bushels valued at \$19,900.

× ×

121,344 tons of green corn for feeding were cut from 15,168 acres sown in Grey in 1913. The yield per acre was 8 tons and the value was \$485,300.

× ×

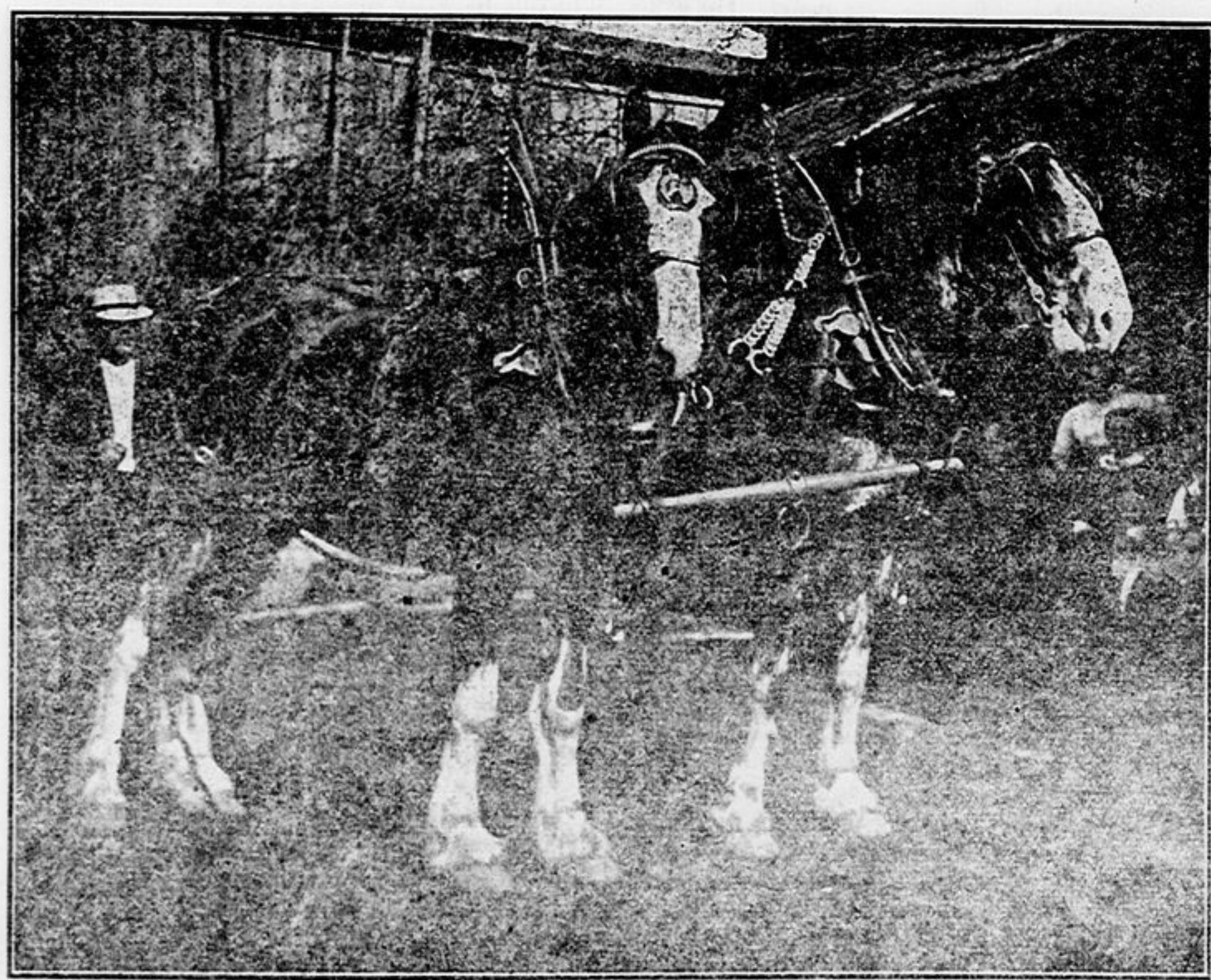
Grey had 6,041 acres of potatoes in 1913 yielding at 784,271 bushels were harvested. The rate of yield was 281 bushels per acre and the value was \$78,000. The 462 acres of feeding Sugar Beets sown in 1913 yielded 110,880 bushels, or at the rate of 240 bushels per acre. These were valued at \$11,088.

× ×

In 1913 there were 132 acres of Carrots in the County of Grey, yielding at the rate of 223 bushels per acre, or a total of 29,436 bushels. These were valued at \$3,000.

× ×

The total area cropped in the County of Grey in 1913 was 440,620 acres. From this acreage was harvested crops to the value of \$5,966,997, or at the rate of \$13.54 per acre.



OUR CHAIRMAN AND HIS PRIZE-WINNERS AT GUELPH, 1914

166 acres of Beans were sown in Grey in 1913 giving a yield of 14.2 bushels to the acre. The total yield was 2,357 bushels, with a value of \$2,300.

× ×

Corn for husking yielded at the rate of 60 bushels per acre in 1913. The 553 acres sown gave a yield of 33,180 bushels valued at \$19,900.

× ×

121,344 tons of green corn for feeding were cut from 15,168 acres sown in Grey in 1913. The yield per acre was 8 tons and the value was \$485,300.

× ×

Grey had 6,041 acres of potatoes in 1913 yielding at 784,271 bushels were harvested. The rate of yield was 281 bushels per acre and the value was \$78,000. The 462 acres of feeding Sugar Beets sown in 1913 yielded 110,880 bushels, or at the rate of 240 bushels per acre. These were valued at \$11,088.

× ×

In 1913 there were 132 acres of Carrots in the County of Grey, yielding at the rate of 223 bushels per acre, or a total of 29,436 bushels. These were valued at \$3,000.

× ×

The total area cropped in the County of Grey in 1913 was 440,620 acres. From this acreage was harvested crops to the value of \$5,966,997, or at the rate of \$13.54 per acre.

HORSES to the number of 33,435 were on hand in Grey County on July 1st, 1913. These were valued at \$4,680,900. According to the returns made to the District Representative at Markdale there were on hand in the County the following numbers of pure-bred horses. Clydesdales, 109; Hackneys, 10; Thoroughbreds, 6; Welsh Ponies, 4; Arabs, 1. French Coach, 3; and 12 that were pure-bred but no name given, making a total of 145 horses.

In 1913 the following prizes were donated by the County Council at the Guelph Winter Fair: For the best Stallion shown by an amateur exhibitor, resident of the County of Grey: 1st, \$12; 2nd, \$8. For the best Gelding or Mare, any draught breed, shown by an amateur exhibitor resident of the County of Grey: 1st, \$10; 2nd, \$5. The Stallion prizes were won by Myles and the other prizes

Continued on page 8.

CORN CHOP AT SPECIAL PRICES

We have a good stock of CORN CHOP on hand that we are selling in Ton lots at about the same price as Oats, and every Feeder knows that Corn is better feed than Oats for feeding stock. If you want heavy feed get our prices on this feed, as it is good value for the price we are asking for it.

We have other good Feed on hand all the time, at prices as low as we can make them.

Our terms on Feed are strictly Cash, or Grain at market price. We do not give any Credit.

If you have Grain of any kind to sell we will pay highest market prices for any quantity of Oats or other Grain at our Elevator.

We want empty feed sacks, if you have any bring them in and we will pay you FIVE Cents each for all you bring.

We Are Paying from 45c to 50c for Oats at our Elevator

PHONES 4 and 26

The Rob Roy Cereal Mills Co.
Oatmeal Millers.

Are We Discouraged?

— NO —

What we have we hold and
What we have't got we're after

WAR ON PRICES

No War Prices Here

All goods bought before the war and our customers get the benefit. One of the best selected stocks of Fancy Goods and Novelties in OLD GREY for Christmas and New Year Gifts.

WAR ON PRICES

Imported and Domestic Perfumes

In Fancy Package and Bulk.

Parisian Ivory Toilet Sets Parisian Ivory Manicure Sets
Parisian Ivory Clocks Parisian Ivory Odd Pieces
Parisian Ivory Military Brushes

SOLID EBONY—In Toilet—Manicure and Military Sets

Leather Goods

The Newest Hand Bags, Music Rolls, Wallets, Purses, Brush Cases, Etc., Etc.

Pipes Cigars and Smokers' Sundries

Meerschaum Pipes—Briar Root—All Kinds, from 25c to \$8
Fancy Cigar Cases—Fancy Tobacco Pouches—Tobaccos and Cigars
Violins Violin Bows Mouth Organs

Bibles and Hymnals

Willards Forkdipped Chocolates

The Best and Cleanest Chocolates Made.
In Fancy Packages and Bulk.

Call in and See Our Display—We will not be Undersold

The Largest Stock—The Lowest Prices—The Best Service

Central Drug Store

Durham ::: Ontario

Are You Buying Your Shoes At The RIGHT PLACE?



Do you get a style that makes your foot look trim. The shoe we sell will suit you for style and price.

We have added to our already large stock 4 new lines of CLASSICK shoes for ladies, in Patent, Dongola and Swede leathers. Our best lines for men include the well known Astoria and Brandon shoes. We have many other makes at smaller prices. Call and see these before making your next purchase. Trunks, Valises, Hosiery Etc. always in stock, prices right.

CUSTOM WORK AND REPAIRING AS USUAL

The Down Town Shoe Store: J. S. McIlraith

CARD OF THANKS

WE take this opportunity of thanking our many customers who gave us a share of their patronage during our thirty years business in the Old Stand.

We are again settled and ready for business in the store just across the street and as we have decided to remain in business we ask for a continued support, assuring all of fair honest and courteous treatment.

We have received a stock of Yarns, Blankets and Woollen Goods and invite inspection. Learn our prices before buying.

Call and see us in our new premises.

S. SCOTT

Opposite the Old Stand, Durham, Ont.