

NEWS AND INFORMATION FOR THE BUSY FARMER

(Furnished by the Ontario Department of Agriculture)

More Onions Planted
Fully 1600 acres in the Dover, Erieau, Jeanette's Creek and Leamington districts are under crop for onions this year, according to a survey recently completed. Last year the acreage in these districts amounted to 1190 acres, the increase this season being due to the Dover farmers going in more extensively for this crop. On the basis of last year, this year's acreage should yield about 350,000 bags.

Interest Developed in Dairying
Two Ontario counties have recently shown an increased interest in the dairy cow which bids very well indeed for the dairy industry in the province. In Northumberland, the agricultural representative, Walter H. Smith, has persuaded Mr. Chambers, the Provincial Dairy Products Inspector at Belleville to open an office to assist his dairy farmers. At the beginning of the work twenty-one samples were taken for testing and the new office promises to become a very useful adjunct to the department. In Leeds county the dairy-men have arranged to hold a number of meetings of farmers sending milk to various groups of factories with the idea of improving the quality of the milk submitted for cheese-making.

Changes in Representatives
R. S. Duncan, director of the Representatives Branch, Ontario Department of Agriculture has announced several changes in the personnel of his department. Ina McLeod, B.S.A., who has been assistant representative in Huron for the past year has been appointed agricultural representative for that county with headquarters at Clinton to succeed George A. McCague, who has resigned. Ralph C. Bancury, B.S.A., formerly assistant representative of Wellington county has been appointed representative for Dufferin with headquarters at Orangeville to succeed Mr. Campbell Lamont. In Renfrew County Arthur H. Martin will be succeeded by Frank Q. Dench, formerly assistant representative in Grey County. Mr. Martin has been appointed assistant director of the crops, Co-Operation and Markets Branches at the Parliament Bldgs. The following assistant representatives have been appointed: Essex, E. R. McClellan B.S.A.; Huron, A. M. Barr B.S.A.; Grey, A. V. Langdon B.S.A.; Wentworth, H. L. Atkinson B.S.A.; Wellington, H. L. Fair, B.S.A.

Grubs and Strawberry Plants
A new strawberry plantation is likely to come to grief if it is on sod land where white grubs make their home. At least two vegetable crops should be taken from the land before strawberry plants are set out. June beetles lay their eggs commonly in grassy land and the white grubs which hatch from them require two or more years to develop. In newly ploughed sod, therefore, there will be some half-grown larvae. In the year following, they will be nearly full grown and very voracious and strawberry roots are a favorite food, with the result that an entire plantation may be easily wiped out.

Tests on Alfalfa
Satisfactory yields of alfalfa are fairly common in many parts of Ontario yet many farmers are anxious to find means of increasing the production of this highly valuable legume and of strengthening the crop. It is a well known fact that alfalfa makes use of large quantities of suitable fertilizers will be best to apply to it, is a question in which many practical farmers are interested. In an attempt to answer this important question, a very interesting test is being worked out by the Department of Chemistry, Ontario Agricultural College, in co-operation with R. E. White, Agricultural Representative in Newmarket, on the farm of Earl Toole, Newmarket.

Grapes and Soy Beans
Elgin Senn, assistant manager of the Border Cities Chamber of Commerce at a recent meeting in Essex County said that it would be well for that county to go in for the cultivation of soy beans and grapes which are in high demand and can be easily grown there. Recently he had learned that a Border Winery had brought in five hundred tons of grapes from the Niagara Dis-

trict last year. Soy beans are a different proposition. The value of the crop is two fold. The bean carries a valuable oil which is used in the manufacture of paint, etc. And the residue after the oil has been extracted makes a better hog feed than the original seed. "Exploitation of the soy bean would have a telling effect on Essex agriculture" Mr. Senn declared emphatically. It is not unlikely that the advice of Mr. Senn might be applicable to other parts of Ontario.

Labor-Saving Devices
Already a great deal of discussion has been indulged in by poultry raisers concerning the use of electricity in producing more eggs per hen. However, the use of "electric daylight" is not the only way in which this useful commodity can be used on the farm. With the increased use of cheap hydro power, electric labor saving devices will be not more general use and the day is not far distant when electricity will run the farm as completely as it now runs the modern factory.

Compete For Donation
Announcement is made by J. Lockie Wilson, superintendent of the Agricultural Societies Branch, that the A. J. H. Eckardt donation will be competed for in 1930 at the following county fairs: Russell, Kingston Industrial, Robilns Mills Victoria, Simcoe, Lincoln, Norfolk, Lambton, Elgin, Bruce, Haliburton, Nipissing.

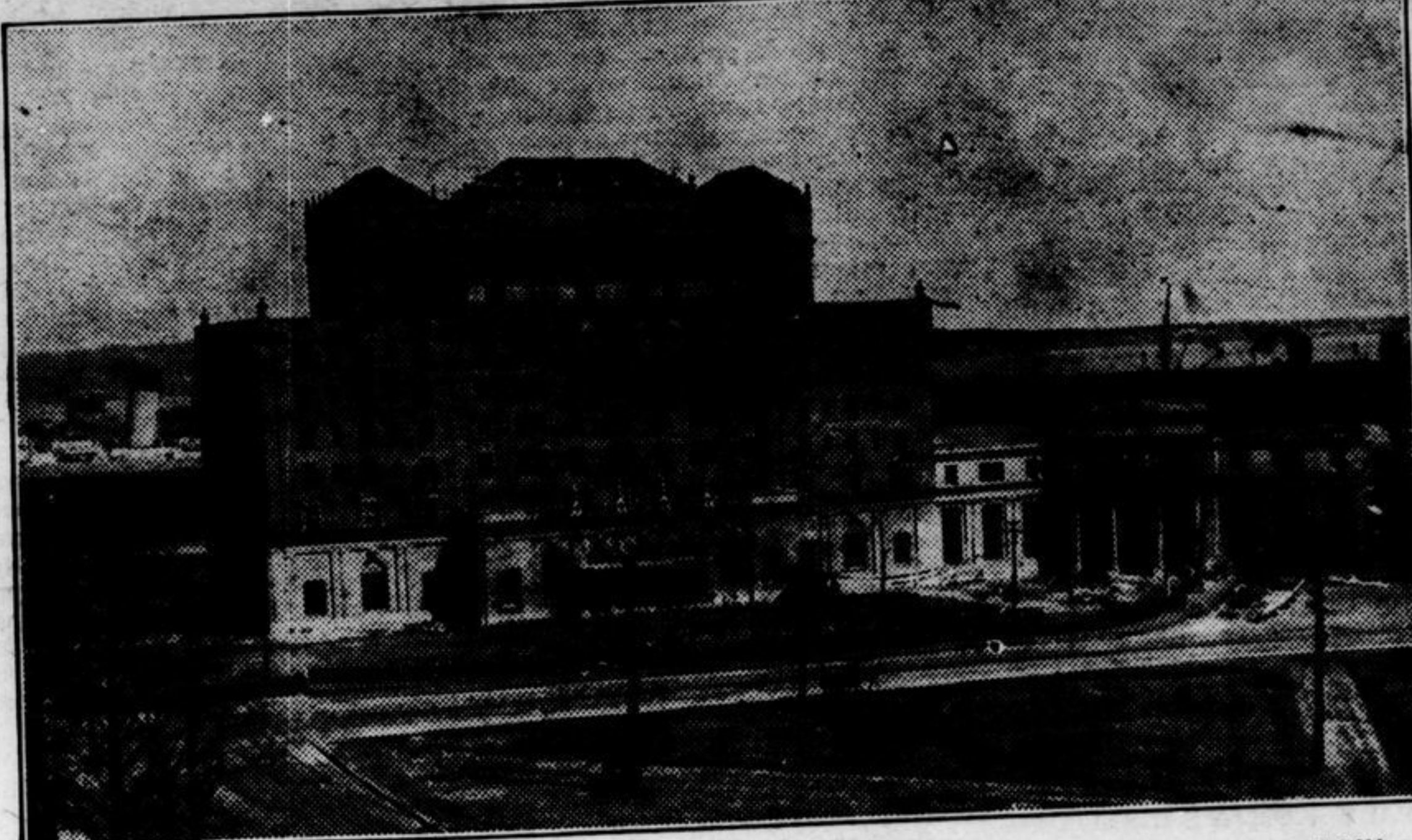
Inter-County Visiting
Farmers' excursions from Welland, Wellington, Kent, Lambton and Essex are visiting Norfolk County this summer. As a writer in the Farmer's Sun remarks: "If the time and gasoline can be spared and the trip is well-planned, this inter-county visiting seems to be a promising development. There are few of us who cannot learn something by observing what farmers in other parts of the province are doing and how they do it. Norfolk can show most counties something in growing and selling apples; Oxford can give most some pointers in dairy farming; West Middlesex knows how to grow potatoes and other sections have their strong as well as weak points."

Plow in July
"Plow in July while its dry" is the slogan adopted by farmers of Wellington County in their combat to eliminate the "Million Dollar Menace"—the sow thistle. The method described by Ralph Clemens, agricultural representative, is perhaps the best adapted to the poorly drained heavy clay soils on which sow thistle best thrives. A modern two-furrow plow is used, drawn by four horses or a tractor. The hay is gotten off early and the land is plowed while dry to a depth of six or eight inches. The clods thus turned up, if left for a few days will kill perhaps 70 per cent of the sow thistle roots. After a week, if rain has not intervened, a heavy broad-toothed cultivator or the heavy disc is used to expose all the roots to the killing effects of heat and drought.

FARM CHEMISTRY
A year's work in the Division of Chemistry of the Department of Agriculture at Ottawa included the examination of 4263 samples of soils; manures and fertilizers; forage plants; fodders and feeding stuffs; waters; samples of meat and canned foods; and miscellaneous subjects, including dairy products and insecticides. These samples were forwarded to the Dominion Chemist from all parts of Canada. In addition to the regular work of the Division a chemical service to farmers is maintained which during the period of the latest report handled 617 individual samples. This is a service which has been maintained since the early days of the Experimental Farms.

It will pay you to advertise in The Chronicle.

New Nova Scotian Hotel, Halifax



The Nova Scotian Hotel of the Canadian National Railways at Halifax, which will shortly be opened will give the Canadian National Railways an up-to-date hotel adjoining their terminal station and will provide a needed facility for the travelling public. The hotel has 160 bedrooms, each with bath, besides the necessary complement of public rooms. A feature of the new hotel is the large garage which has been provided in the basement of the hotel,

where tourists may store their cars while remaining in the city or while visiting other parts of the province by train. The hotel connects with the new modern terminals and from its roof gardens furnishes remarkable scenic views both to the harbor and the landward side. Constructed of Nova Scotia brick and stone, in the Georgian style of architecture, the Nova Scotian has many pleasing features about it. One of these, the radio broadcasting studio on the

eight floor, will give to Halifax a radio voice in the national broadcasts of the Canadian National System. Visitors to Canada, entering the Dominion through the Halifax gateway will receive a splendid first impression of the country when they step from the train into this magnificent building which is connected with the station, permitting the passenger to reach his hotel room without having to step outside into the open air from the time of leaving the train.

Our Ottawa Letter

The political leaders now have absolutely nothing up their sleeves. Mr. Bennett has been developing his campaign program for some three weeks. Mr. King has been doing his best to catch up and indications are that he has fully laid bare the structure of his appeal to the public.

In Ottawa, where politics are a religion, or an obsession, or a disease, there is a very wide spread belief that thus far Mr. Bennett has outdistanced the prime minister. Mr. King at Brantford and again at Peterborough was plainly on the defensive.

He made the greatest use of Mr. Bennett's declaration that a British preference should be mutual, that is, that some benefit should accrue to Canada as well as to the mother country.

There was nothing in Mr. King's address to match the appeal to the public of Mr. Bennett's pledge of a national old age pension plan which will relieve the provinces and the municipalities of a very heavy burden in taxation.

With the tourist business ranking as Canada's fourth greatest industry there was nothing in Mr. King's pronouncement to stack up against a national highway plan.

There was nothing to form a counter-part to the national fuel policy which Mr. Bennett undertook to make effective if returned to office.

There was nothing to parallel the program of railway construction laid down by Mr. Bennett in his Winnipeg speech in regard to the Hudson Bay Railway and the Peace River outlet to the Pacific.

Through more than two hours Mr. King endeavored to prove that the burden of taxation had been appreciably lowered by his government. In this connection he was unusually frank, admitting that the taxes which had been reduced had been imposed almost entirely by his own government.

YARD ROTATION IN THE CULTURE OF POULTRY

(Experimental Farms Note.)
Mortality figures over a period of five years, taken from the autopsy records of the Poultry Division, Central Experimental Farm show 25 per cent of all mortality to be caused by intestinal parasitism. It must be remembered that the birds which were the subjects of this tabulation came mainly from poultry flocks in the provinces of Ontario and Quebec and from the Canadian and Ontario Egg Laying Contests, 80 per cent of the birds of which were also from the same provinces. Obviously these figures are a fairly accurate barometer of disease conditions in the provinces mentioned and no doubt would apply with slight reservations, to Canadian conditions in general.

In the light of this fact it will be readily recognized that the control of this disease is of great importance to the industry.

Both experimental work and actual practice tend to point toward the value of yard rotation in the rearing and maintaining of stock free from intestinal parasites. If possible, the rearing ground should be divided into four or five sections of equal size. While the stock ranges on one section the remaining ground is cultivated and sown to free growing crops to maintain the cleanliness of the soil. The following season the range is shifted one section and the used land cultivated and put down to crop. Clover, alfalfa and hoed crops make excellent soil cleaners, the land being used for range following the green rather than the hoed crop. The colony brooder house and range rearing coop, plans for which are shown in the bulletin, "Poultry House Construction", obtainable from the Publications Branch, Department of Agriculture, Ottawa, fit in excellently in such a rotation owing to ease of moving and adaptability to rearing conditions.

Once reared free from parasites the maintenance of such a condition is gained by the same treatment. Permanent laying or breeding houses should have large front and back yards free from interior fences which may be cultivated in the same way as the rearing land and alternated between crops and range for the birds.

Voice of the Tempter: "Get a divorce and we will buy your furniture."—Adv. in the El Paso Times.

POLITICAL MEETINGS

Meetings in the interest of the United Farmers' Candidate Agnes Macphail will be held as follows:
Swinton Park Thursday, June 26
Proton Station Friday, June 27
Bob Roy (Osprey) Saturday, June 28
The Big Picnic Tuesday, July 1
Mount Forest Town Hall Wednesday, July 2
Allan Park Garden Party Thursday, July 3
Grimston School Friday, July 4
Elmwood Hall Saturday, July 5
All meetings start at 8.30 and will be addressed by the candidate and F. R. Oliver, M. P. P.

Old gentleman (bewildered at the elaborate wedding): "Are you the bridegroom?"
Young man: "No, sir, I was eliminated in the semi-finals."

The Canadian Standard Bred Stallion



WILBUR LOU (4082)

will make the season of 1930 as follows, health and weather permitting:

MONDAY, will leave his own stable, Can. 2 Glenelg, and proceed to Knox Corners, Normanby, for noon; then to Brown Bros., Holstein, for night.

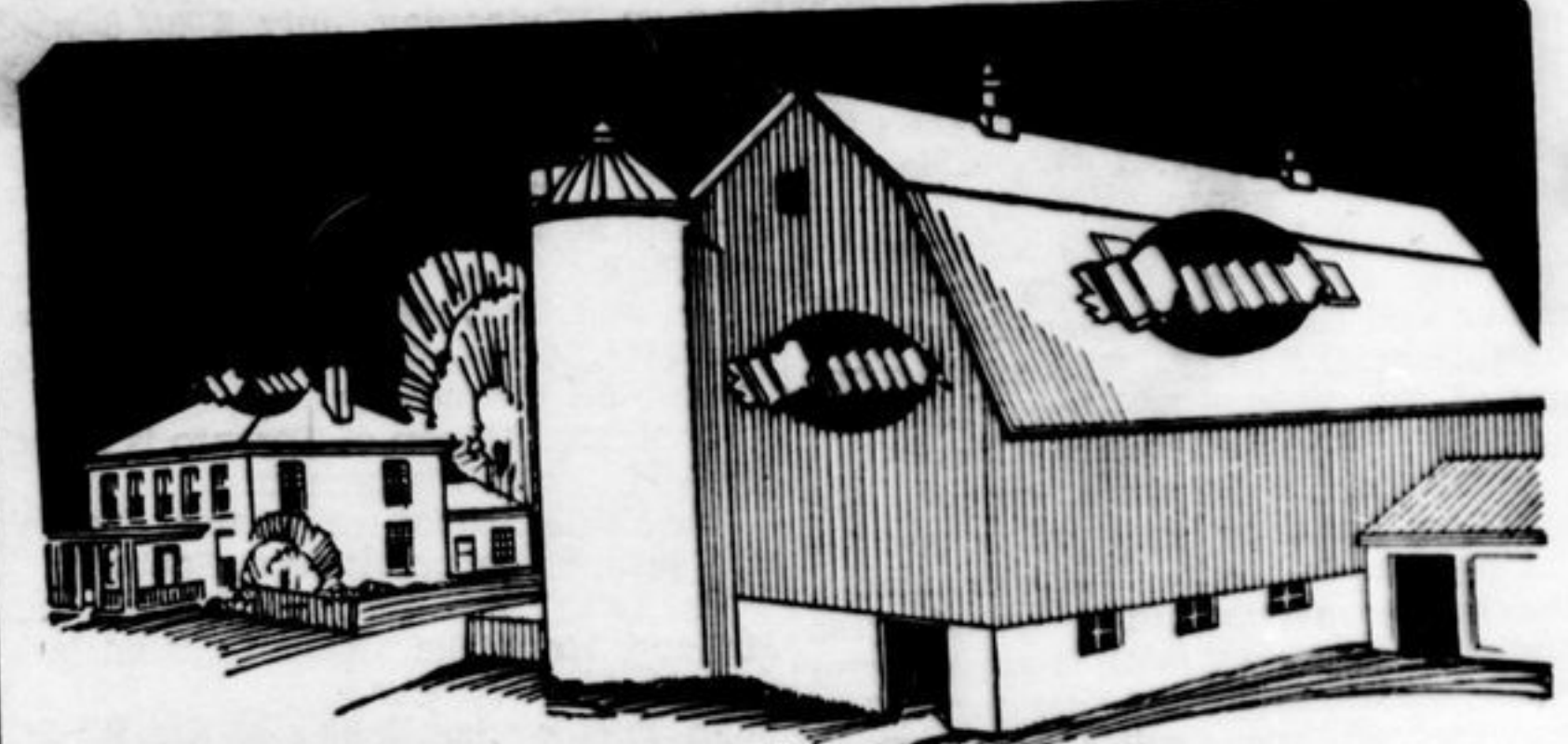
TUESDAY, to W. S. Atchison's, Glenelg, for noon; to H. W. Hunt's Bentinck, for night.

WEDNESDAY, south to 2nr Con. Bentinck to Allan Park for noon; then North and East to Vessie's Corner, Provincial Highway, for night.

THURSDAY, to his own stable at W. S. Atchison's for noon, where he will remain until the following Monday morning.

Enrolment Certificate No. 2622
TERMS.—To insure a foal, \$10.00 payable on or before March 1, 1931. Insured mares must be returned regularly to the horse or they will be charged insurance whether in foal or not. Persons disposing of their mares before foaling time will be charged insurance whether in foal or not. All accidents to mares at owners' risk.
JAMES DOWNING, Proprietor.
W. S. ATCHISON, Manager.
For further information apply to H. W. Hunt, Hanover, R. 1.

Water-Well Driller
Agent for Baker-run-in-oil Windmills, Gas Engines, Etc.
We keep on hand a full line of pumpjacks, pumps, cylinders and pump supplies. Satisfaction guaranteed. Terms on application.
E. J. PRATT
Durham R. R. 4 Phone 98-12



RIB-ROLL THE ORIGINAL NEW STYLE ROOFING

RIB-ROLL Galvanized Roofing has been so successful that tens of thousands of farmers now have it on the roofs of their buildings. There has not been a single complaint. RIB-ROLL safeguards crops, protects stock and enhances property values. It is fire-proof, water-tight and truly handsome. Permanent, economical, easy to lay on any roof, keeps out dampness which induces spontaneous combustion. Be sure to get the one and original RIB-ROLL—the roof with the seven ribs and a nail every five inches. Free sample on request.

PRESTON VENTILATORS PREVENT SPONTANEOUS COMBUSTION
Spontaneous combustion is a constant menace to crops, stock and property—unless your barn is equipped with Preston ventilators. Preston ventilators for roof, adjustable side windows and large doors, draw out the moist, warm air and assure proper ventilation. Built to withstand every weather condition.

SPECIAL
We offer attractive terms to responsible farmers on roofing and siding for needed repairs to their buildings. Write for full particulars.

Write for this FREE BOOK
You can search all Canada before getting such a useful book as the "Preston Book About Barns". We offer it to you free. Full of valuable information—usually worth \$3.00 to you. Get your copy.

Eastern Steel Products Limited

Guelph St., Preston, Ont. Factories also at Toronto and Montreal

Vollett's Cash Specials

For This Week Only

GROCERIES	
Pearl White Naphtha Soap, 27 bars for	\$1.00
Rice, Blue Rose, 4 lbs.	.25
Redpath Sugar, granulated, per cwt.	4.99
MEATS	
Picnic Hams, per lb.	.23
Breakfast Bacon, per lb.	.35
Back Bacon, per lb.	.50
Bologna, per lb.	.23
VEGETABLES AND FRUITS	
Carrots, 2 bunches for	.15
Tomatoes, per lb.	.15
Oranges, per dozen	.59
Lemons, per dozen	.39

Leave Your Order for Strawberries this week. Berries delivered the day they are picked.

Eggs and Wool Bought—Highest Prices Paid
DURHAM AND WILLIAMSFORD

W. J. VOLLETT
Garafraux Street. Phone 70.

ADVERTISE

Judicial, Legal, Court Notices—15¢ first insertion, and subsequent insertions 10¢. Classified Small 1 1/2¢ per word for four consecutive insertions; 1¢ per word for subsequent insertions. Minimum charge 25¢. Every advance where the object of any person is advertised as such, to accompany the whom to charge to the person ph. Advertisements "until forbidden without written order until written for their discount."
FRANK IRWIN.

Medical

DRS. JAMIES
Office and residence east of 7th Lambton Street, Office hours, 2 (except Sundays)

J. L. SMITH
Office and residence old Post to 11 a.m. 1.30 (Sundays except)

DR.
Physician at Garafraux Street University of and corrected. p.m., 7 to 9 p.m.

C. G. & B.
Graduate of College, Toronto Block, Durham, 123.

DR. W. C. P.
Office over Durham.

J. F. GRANT
Honor Graduate Toronto, Grad. Dental Surgeon try in all its Block, Mill Street Beth's Drug

Legal
J. H. M. Barrister Lambton Street

LUCAS, Barrister I. B. Lucas, K. I.

A member of Tuesday Mak clerk in office Durham Federal

F. MacAR
Notary Public insurance, etc. business transactions efficient Your OFFICE: 16 Ga

GEORGE
Licensed Auctioneer Sales taken Dates arranged office. George E. R. Phone 42 R. 2.

Auctioneer promptly at guaranteed. Phone All Hanover E.

ENSEMBLE
Hostery. M I am at vs Wednesdays B Nichol, C

DURHAM
The Sch to take up (1) Junior (2) Entrance Each membership Teacher. Intending enter at be Inform obtained in The Sch in the past in the future Durham town, and be obtained JOHN J. A.

Blessed contracted pulling a shovel.

The average 000,000 worth Not the at

These cracked up painted go