

# Oliver's Official Majority 764

ARTEMESIA			
	1926		1929
	Jam.	Oliv.	Oliv. Perd.
1. Orange Valley	25	105	99
2. Flesherton Ward	32	81	84
3. Proton Station	41	81	58
4. Ceylon	80	99	101
5. Priceville	35	161	161
6. Vandeleur	13	96	85
7. Eugenia	75	128	118
8. Portlaw	21	76	56
Majority for Oliver, 1926	322	827	762
Majority for Oliver, 1929		505	306

BENTINCK			
	1926		1929
	Jam.	Oliv.	Oliv. Perd.
1. Tobermory	19	46	39
2. Clark's	58	90	92
3. Hutton Hill	54	88	82
4. Allan Park	92	80	95
5. Campbell's Corners	80	49	75
6. Lamash	50	143	144
7. Louise	48	69	62
8. Elmwood	62	114	114
Majority for Oliver, 1926	463	679	703
Majority for Oliver, 1929		216	307

CHATSWORTH			
	1926		1929
	Jam.	Oliv.	Oliv. Perd.
Majority for Oliver, 1926	66	123	78
Majority for Oliver, 1929		57	94

DUNDALK			
	1926		1929
	Jam.	Oliv.	Oliv. Perd.
Majority for Oliver, 1926	175	185	128
Majority for Oliver, 1929		10	210

DURHAM			
	1926		1929
	Jam.	Oliv.	Oliv. Perd.
1. North Ward	169	62	72
2. East Ward	240	68	85
3. West Ward	298	129	129
Majority for Jamieson, 1926	707	259	286
Majority for Perdue, 1929		448	533

EGREMONT			
	1926		1929
	Jam.	Oliv.	Oliv. Perd.
1. Allan's	62	94	94
2. Dromore	34	127	139
3. Holstein	97	236	203
4. Yeovil	34	144	140
5. Mount Forest	59	126	116
6. Drury's	29	108	112
Majority for Oliver, 1926	315	835	804
Majority for Oliver, 1929		520	277

EUPHRASIA			
	1926		1929
	Jam.	Oliv.	Oliv. Perd.
1. Duncan	22	19	34
2. Heathcote	41	94	85
3. Fairmount	36	27	19
4. Kimberley	55	95	87
5. Rocklyn	70	85	69
6. Beaverdale	19	42	48
7. Cherry Grove	28	89	77
8. Goring	70	75	56
9. Wodehouse	17	75	63
Majority for Oliver, 1926	358	601	538
Majority for Oliver, 1929		243	496

FLESHERTON			
	1926		1929
	Jam.	Oliv.	Oliv. Perd.
Majority for Oliver, 1926	119	129	113
Majority for Perdue, 1929		10	131

GLENELG			
	1926		1929
	Jam.	Oliv.	Oliv. Perd.
1. Ritchie's	74	141	128
2. Glen	36	88	107
3. Markdale Ward	70	93	97
4. McKenzie's	50	70	83
5. Township Hall	110	69	83
Majority for Oliver, 1926	340	461	498
Majority for Oliver, 1929		121	272

HANOVER			
	1926		1929
	Jam.	Oliv.	Oliv. Perd.
1.	118	59	84
2.	152	74	55
3.	100	63	49
4.	102	85	59
Majority for Oliver, 1926			142
Majority for Oliver, 1929			81

HOLLAND			
	1926		1929
	Jam.	Oliv.	Oliv. Perd.
1. Arnott	27	91	74
2. Walter's Falls	51	109	92
3. Berkeley	134	80	67
4. Moggie	44	119	102
5. Holland Centre	98	72	62
6. Masie	26	76	59
Majority for Oliver, 1926	380	547	456
Majority for Perdue, 1929		167	586

MARKDALE			
	1926		1929
	Jam.	Oliv.	Oliv. Perd.
Majority for Jamieson, 1926	250	189	155
Majority for Perdue, 1929		61	293

NEUSTADT			
	1926		1929
	Jam.	Oliv.	Oliv. Perd.
Majority for Jamieson, 1926	192	18	32
Majority for Perdue, 1929		174	171

NORMANBY			
	1926		1929
	Jam.	Oliv.	Oliv. Perd.
1. Alseldt	81	84	83
2. Ayton Ward	323	73	100
3. Neustadt Ward	108	50	51
4. Hampden	89	42	37
5. Blyth's	71	92	87
6. McPhee	41	41	42
7. Robinson's	54	84	70
Majority for Oliver, 1926	767	466	470
Majority for Perdue, 1929		301	638

OSPREY			
	1926		1929
	Jam.	Oliv.	Oliv. Perd.
1. Wareham	22	37	28
2. Maxwell	82	96	89
3. Feversham	88	137	115
4. Singhampton	48	23	36
5. McIntyre	26	65	60
6. Rob Roy	17	66	62
7. Badjeros	40	88	83
8. Hatherton	28	22	17
Majority for Oliver, 1926	351	534	490
Majority for Oliver, 1929		183	403

PROTON			
	1926		1929
	Jam.	Oliv.	Oliv. Perd.
1. Cedarville	30	114	105
2. Hopeville	43	172	154
3. Swinton Park	41	178	154
4. Ventry	33	99	77
5. Dundalk Ward	51	55	38
6. Separate School	43	43	54
7. Kingscote	27	54	39
8. Proton Station	26	61	46
Majority for Oliver, 1926	294	776	667
Majority for Oliver, 1929		482	289

SUMMARY OF MAJORITIES			
	1926	1929	1929
Artemesia	505	456	321
Bentinck	216	307	130
Chatsworth	57	16	138
Dundalk	10	82	171
Durham	448	247	168
Egremont	520	527	139
Euphrasia	243	42	139
Flesherton	10	18	139
Glenelg	121	226	139
Hanover	370	321	139
Holland	167	130	139
Markdale	61	138	139
Neustadt	174	139	139
Normanby	301	168	139
Osprey	183	87	139
Proton	482	378	139
Majority for Oliver, 1926	1354	2514	2023
Majority for Oliver, 1929		1354	1259
Total majority for Oliver, 1926—1160.		1160	764
Total majority for Oliver, 1929—764.			764

to take things easy for about a year.

**Big Value in Fertilizers**  
Commercial fertilizers when applied to various crops in conjunction with good farming methods give big returns. Phosphates increase yields of almost all crops on almost all types of soil in the province. Potash pays, especially on the sandy soils. Nitrogen for most farm crops should, as far as possible, be obtained for growing legumes.

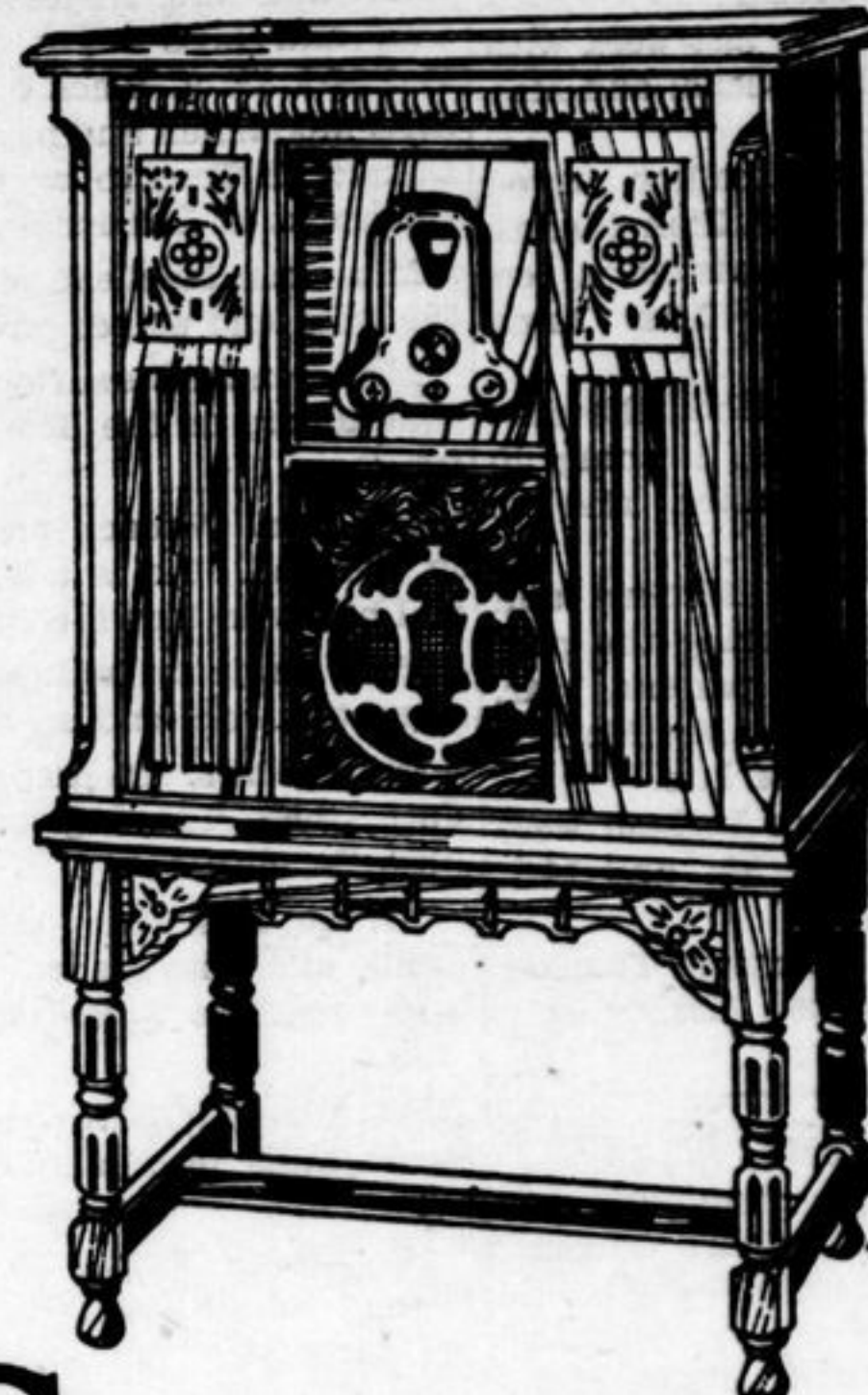
**Crop Yield Average**  
The estimated yield of fall wheat, spring wheat, oats, barley, rye and peas in Ontario for the year is given at 114,140,839 bushels as compared with 135,377,224 bushels last year. The total acreage in Ontario for these grains was 367,881 acres less than last year. Oats are lower by 19,500,000 bushels than last year. The potato crop was

below normal and turnips and mangels, due to a continuous drought are smaller in size than usual. Small fruits proved to be a light crop, but winter apples are plentiful, although small in size. The tobacco average was 30 per cent below 1928. Taken all in all, the crop yield is an average one, and the quality good.

**Grading Is Vital**  
The fact that more than 180,000 acres of potatoes are grown in Ontario every year, it is highly important that an efficient marketing system be perfected. This means that every grower should co-operate in properly grading his potatoes and in placing them on the market in a suitable container. Only in this way can the competition of the outside product be met.

**Weed Advisers**  
It is the opinion of the provincial weed inspector that when councils are selecting inspectors they should choose "weed advisers", rather than "police-men". Excellent progress has been made this year and it was found that this was most pronounced where a man was chosen as inspector, who was enthusiastic about weed control and could advise farmers how to reduce their weed menace. Much better to encourage a man to properly prepare a field than to come along late in the season and order the crop cut because of weed infestation.

**The Bean Market**  
The Ontario bean crop will be a little larger than last year. A decrease in the average yield per acre will almost offset the great increase in acreage. The American crop of small white beans has been estimated about two per cent (Continued on page 7.)



## The World's Champion Go-Getter

"The set with the Punch"

# STEWART-WARNER

## New "900 Series" RADIO

\$229.00 less tubes

Above is shown the approved 17th Century English Console—Cabinet No. 47. The traditional sturdiness and enduring simplicity of design characteristic of Old English craftsmanship, are beautifully portrayed in this handsome Console. It is surfaced with American walnut. Typical low relief and solid wood carvings embellish the front panels and the two sliding doors. The sturdy turned and fluted legs are solidly cross-braced to insure permanent rigidity. Enclosed back, 44 inches high, 26 1/2 inches wide, 16 1/4 inches deep. This cabinet is furnished with the Stewart-Warner Electro-Dynamic Reproducer built-in, and with the Stewart-Warner Screen-Grid chassis as the receiving unit.

You'll want to see and hear this sensational new set, even though you do not plan to buy. Come in and let us demonstrate this latest Stewart-Warner triumph that everybody's talking about. Learn what a wonder it is—in power, selectivity, distance-getting. Dial it and enjoy a thrill as the far-off stations come booming in. Hear its clear, rich voice. Volume without distortion! Realism unmatched!

Don't be content to buy an ordinary radio. Buy this new Champion of the Air—"the set with the PUNCH." Its performance surpasses that of sets priced vastly higher. Stewart-Warner manufacturing advantages permit this remarkable value. We're ready and glad to demonstrate. Come in today.

### JAMES MILLER Durham, Ontario

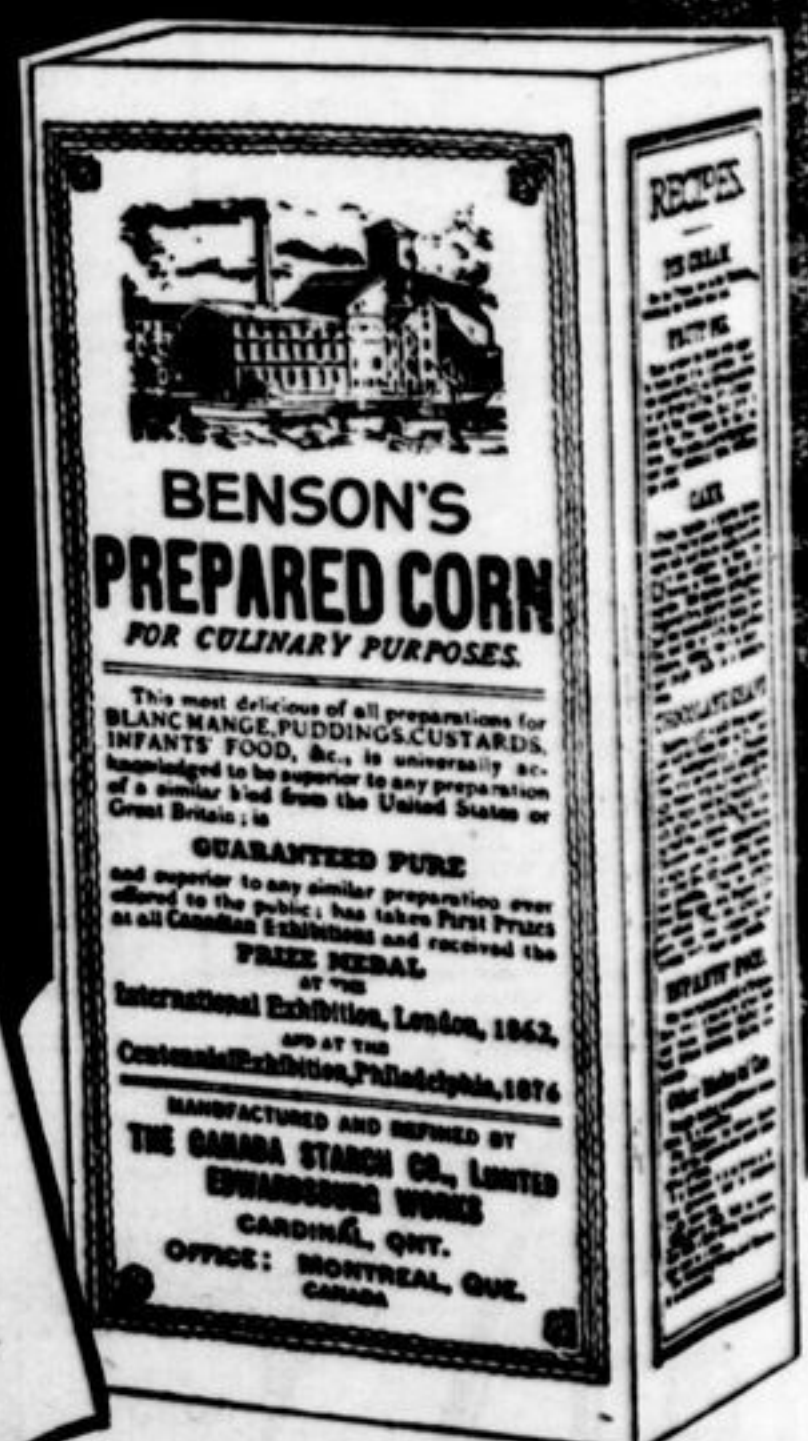
The favorite for 70 years

WHEN you buy Corn Starch say Benson's—and you are assured satisfaction in your cooking.

It is corn starch in its finest and purest form—and its quality positively cannot be equalled anywhere.

Ask for "Benson's Prepared Corn"—and don't accept substitutes—others are in yellow packages too but Benson's is the genuine Corn Starch in the yellow package.

Manufactured by  
The CANADA STARCH CO. Limited  
MONTREAL



# Job PRINTING

Our business is to create printing that makes sales. Typography, choice of stock—every element that makes for more attractive mailing-pieces and handbills is produced here with the care that spells success. Exact estimates of costs are offered on each job regardless of size.

**The Chronicle Printing House**  
Phone 37 Durham

## News and Information For the Busy Farmer

Royal Winter Fair, Toronto—November 20-28.  
Guelph Winter Fair—December 9th to 12th.  
Ottawa Winter Fair—December 2nd to 8th.  
Ontario Beekeepers' Association, Toronto—November 26, 27 and 28.

A silver trophy donated by the Ontario Vegetable Growers' Association, open to members in good standing prior to September 1st, 1929, is offered to the exhibitor obtaining the highest number of points in all sections for vegetables at the Royal Winter Fair. A miniature of the trophy will be given to the winner each year.

An insight into the international character of O. A. C. may be derived from the announcement that students are in attendance from the following countries: Trinidad, Rhodesia, Bermuda, Mexico, South Africa, Holland, Germany, Peru, Ukraine, Japan, Norway, United States, England, Wales, Scotland, Ireland, Czechoslovakia and Canada.

Hon. John S. Martin, Minister of Agriculture, returned to his duties at the Parliament Buildings last week after an absence of five months due to illness. He was warmly greeted by the heads of the different departmental branches. Hon. Mr. Martin will now actively supervise activities of the department, although he will be compelled

### Classified Advertising

**ADVERTISING**  
Judicial, Legal, Official Notices—12c. per first insertion, and 6c. subsequent insertion.  
Classified Small Ads—1 1/2c. per word each four consecutive insertions; 1c. per word thereafter. Minimum charge, 25c. per line. Extra charge, 25c. if charged.  
Every advance notice where the object is the removal of any persons—is advertisement treated as such. Accompany the notice with whom to charge it to the person phoning.  
Advertisements not "until forbidden" without written instructions until written for their discontinuance.  
FRANK IRWIN, Ed.

**Medical**  
DRS. JAMIESON  
Office and residence east of the Lambton Street, Low Office hours, 2 to 5 (except Sundays).  
J. L. SMITH, M.D.  
Office and residence Countess and Lambton old Post Office to 11 a.m., 1.30 to 5 (Sundays excepted).

DR. A. J. ...  
Physician and Graduate of the University of Toronto and corrected. Office hours, 7 to 9 p.m.  
C. G. & BESSIE  
Chiropractors  
Graduates of the College, Toronto. 123 Block, Durham, Ont.

**Dental**  
DR. W. C. PICKER  
Office over J. & J. Durham.  
J. F. GRANT, D.D.S.  
Honor graduate of the University of Toronto. Graduated in Dental Surgery. Practice in all its branches. Mill Street, MacBeth's Drug Store.

**Legal**  
J. H. MacQUINN  
Barrister, Solicitor. Branch office at day Friday.  
LUCAS  
Barristers, Solicitors of the firm with Tuesday of each week may be made by office.

P. F. MacARTHUR  
Notary Public, Insurance, etc. business transacted efficiently. Your patron. OFFICE: 1 door Garage.

GEORGE  
Licensed Auctioneer. Sales taken at dates arranged. office. Telephone George E. Durham. Phone 42 r. 3.

JOHN  
Auctioneer. G. promptly attended. Telephone Hanover R. R.

**DURHAM**  
The School to take up the (1) Junior M (2) Entrance. Each member verily. Graduate Teacher. Intending printer at beginning. Information obtained from The School in the past in the future. Durham is a town. and so be obtained at JOHN J. A. M.

**BATES**  
Distinctive at No extra of Phone K1 122-124 A. John W. FOMBERG.