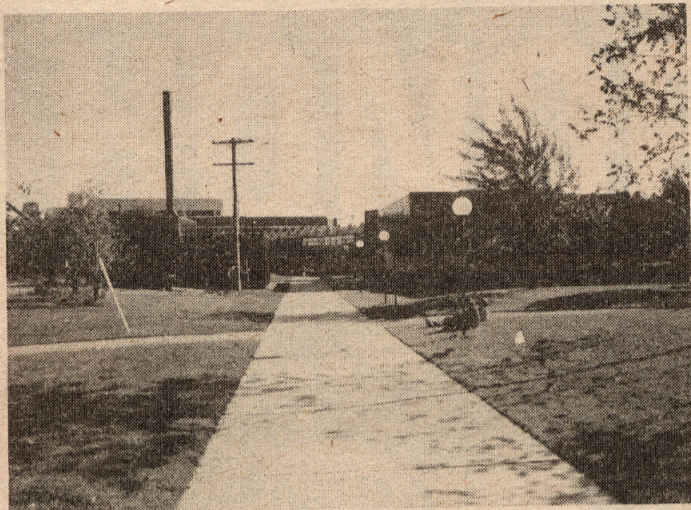
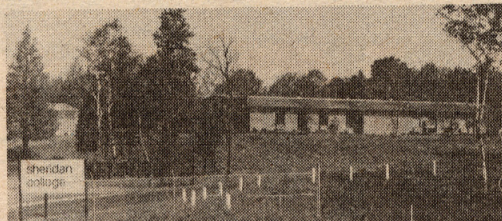


WE'VE ONLY JUST BEGUN ... Our Second Decade



Oakville Main Campus



Milton Campus (Heavy Equipment School)



Oakville South Campus



Brampton Campus

The Sheridan Tradition

Sheridan College takes its name from a pioneer settlement that thrived on the border of Halton and Peel counties during the middle 1800s. The local blacksmith Stephen Oughtred was an avid student of literature and chose the name Sheridan to honor the Irish playwright Richard Brinsley Sheridan.

An artist born in Sheridan, Frederick A. Verner, achieved international prominence for his paintings of buffalo while another craftsman, Erastus Hill, produced furniture. The heirs to the tradition established by Verner and Hill are, of course, the Sheridan College School of Design in Mississauga — the only crafts school in Ontario — and the Sheridan School of Visual Arts.

Sheridan College of Applied Arts and Technology was established to carry on the tradition of Stephen Oughtred. This man who proposed the name Sheridan followed an occupation which represented the technology of his age while, at the same time, exhibiting a love of the arts through his pursuit of literature and pride in his cultural heritage.

Sheridan College presents
Mardi Gras
10th Anniversary Open House
Sunday, April 3, 1977
1-5 p.m.
at the New Brampton Campus
(west of Hwy. 10 & Steeles Ave. on McLaughlin Road)

FEATURING:
Jazz Band • Exhibits •
Demonstrations • Refreshments •
FREE balloons for the children •

Join in our Birthday Celebrations
& win a FREE TRIP FOR TWO to the Caribbean
by British West Indies Airlines

For details, call 845-9430, 632-7081, 823-9730, ext. 285

10 Years of Community Service

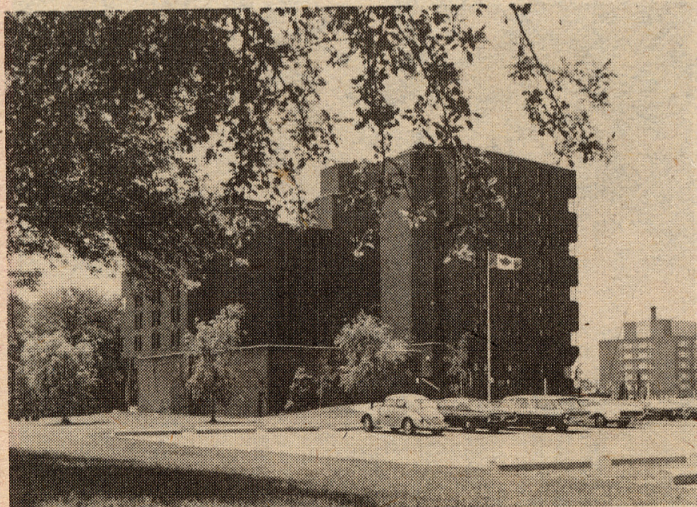
Sheridan College has seen a lot of changes in 10 years. From a modest birth in an old Brampton high school in 1967, Sheridan has grown into a major college with eight separate campuses throughout Halton and Peel regions. That's one for almost every year the college has existed.

In 1967, Sheridan opened with one campus and 400 students. Today, the college has almost 4,000 students enrolled in more than 70 full-time programs at its five day-time campuses.

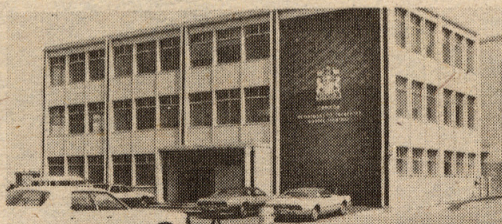
An additional 13,000 students enrol every year in the multitude of part-time courses offered at Sheridan's community services campuses in Burlington, Oakville, Milton and Mississauga.

Whether your taste leans to arts and crafts or technology; whether you're interested in earning a degree or learning a new hobby, Sheridan College has something for you.

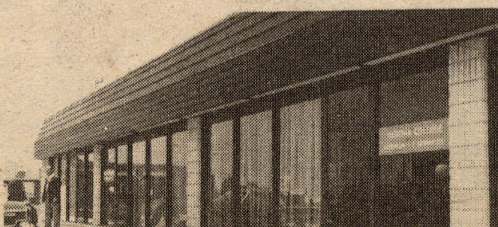
Because no matter how much we change and grow, one thing will always stay the same — our desire to serve the educational needs and wants of the Halton-Peel community.



Credit Valley Campus (School of Nursing)



Mississauga (Port Street) Campus



Burlington Campus



Lorne Park Campus (School of Design)

Celebrating Our 10th Anniversary Year