

Milton takes two from neighbors

It was a good week for Milton and a bad week for Acton as the junior and senior girls volleyball squads took contests from their northern neighbours. Both Mustang teams took two of three matches to win last Wednesday.

The seniors took Acton in two straight but the juniors required three games to settle the best-of-three issue. Milton's junior squad is considered to be a tougher league competitor than the senior side (the seniors lost some good players to graduation) but Acton fielded a tough junior squad too.

Acton led Milton 10-4 at Milton District High but the juniors battled back to take the first game 15-13. In the second game, it was a tight game for the first few points but then we just fell asleep. Milton coach Bryan Camani admitted Acton won 15-8.

In the third game, Milton jumped to a 2-0 lead but Acton battled back to take an 8-2 lead. Camani put in sub Denise Michel and she made the difference.

"She put her serves over and deep and they

started making the same mistakes we had made. They couldn't get the ball to their setter," Camani pointed out. "We gained momentum and pulled it out."

Senior coach Bev Berndt was also pleased with her team's showing. "We finally played aggressive volleyball. It was good to see a little more hustle," she said. "We should be able to make the playoffs. We're getting more experience and playing better."

Milton took Acton in two straight, winning 15-13 and 15-12. Berndt attributed a lot of that winning effort to team captains Jacqueline Chudleigh and Corinne Kollman. "They led the offence," she said.

The juniors have beaten Acton and Blakelock and lost to Oakville-Trafalgar. The seniors lost to Blakelock and Oakville-Trafalgar and have beaten Acton in league action.

Opts get early jump

Milton Optimists minor peewees got an early jump in their first-round OMHA playdowns by turning back Chinguacousy 3-1 Monday night at Memorial Arena.

The second game in the four-point series is slated for Wednesday at 7:45 p.m. at Victoria Park Arena in Bramalea.

Opts controlled much of the play through the first two periods but managed but a 1-1

tie on the strength of a goal by Johnny on-the-spot Cheeseman. Milton came roaring out for the final period and put it away with goals from Mike Cox and Todd Mulley.

The win came on the heels of a snowy tournament played in Blenheim on the weekend. Opts beat Winnetka, Ill., 4-2 in the opener but fell 4-1 to London Jets in the championship semi-final.

Rep AA Hockey

Fifth Wheel major bantam AA reps needed only a tie at press time to draw the curtain in first-round playoff hockey action.

Milton drew Streetsville 3-3 when Streetsville battled back to force overtime at Memorial Arena Sunday. But Wheelers beat Streetsville 7-4 in Streetsville Saturday.

Sunday it was a different story. Milton dominated for the first period and part of the second, but the visitors came back with two goals in the middle act and one in the third frame to force overtime.

Phil Leach scored once and Adam Mead scored twice to give Milton the early lead Sunday. Paul Hartley, Darren Hayes and Craig Wilkins replied for Streetsville.

Saturday, Streetsville led early and Milton came back. Chris Bayley and Derek Day scored for Streetsville but Milton came back for four consecutive goals in the high-scoring second period.

Tax Tips

by Bill Mercer, F.C.G.A.

From now until the end of April, this column will attempt to explain a few basic areas of the tax return. If any reader has a question that I can answer in a general way, I will be pleased to do so. However, it is not the purpose of this column to delve into complicated tax issues that really require personal and professional advice. This first column will deal with some changes to the 1984 tax return.

STANDARD DEDUCTION

In previous years, all individual taxpayers have been allowed to claim a standard deduction of \$100 in lieu of itemized deductions for charitable donations and medical expenses. This is no longer the case. However, you will still be able to deduct the actual amount of charitable donations and medical expenses but you must file receipts with your tax return. The amount of the deduction is subject to the general rules: charitable donations are limited to 20% of your net income and only medical expenses in excess of 3% of your net income are deductible.

MOVING EXPENSES

If you were unemployed and moved to take a job in another location you may now claim a deduction for moving expenses. You must move at least 40 km (25 miles) nearer your new work place. To claim the deduction, form T1-M must be completed and attached to your tax return when filed.

ALIMONY AND MAINTENANCE PAYMENTS

The amount that you may claim has been broadened to allow certain third party payments. Pursuant to a court order or written agreement, you may now claim expenses such as medical bills, mortgage payments and tuition fees. The expense must have been incurred in the year or the immediate preceding year.

FEDERAL TAX REDUCTION

The Federal Tax Reduction for 1984 will remain at the current level of \$200 for most individuals. However, for higher income individuals, the Federal Tax Reduction of \$200 will be reduced by 10% of basic Federal Tax in excess of \$6,000.

EXEMPTIONS AND CREDITS

	1984	1983
Personal exemption	\$3,960	\$3,770
Married exemption	3,470	3,300
Children 18 and over	1,360	1,300
Children under 18	710	710
Age exemption	2,480	2,360
Child tax Credit	367	343

Bill Mercer is a local accountant and partner in the Milton office of Mercer, Hildebrand, Thompson & Zehr.

Bayley MacLean

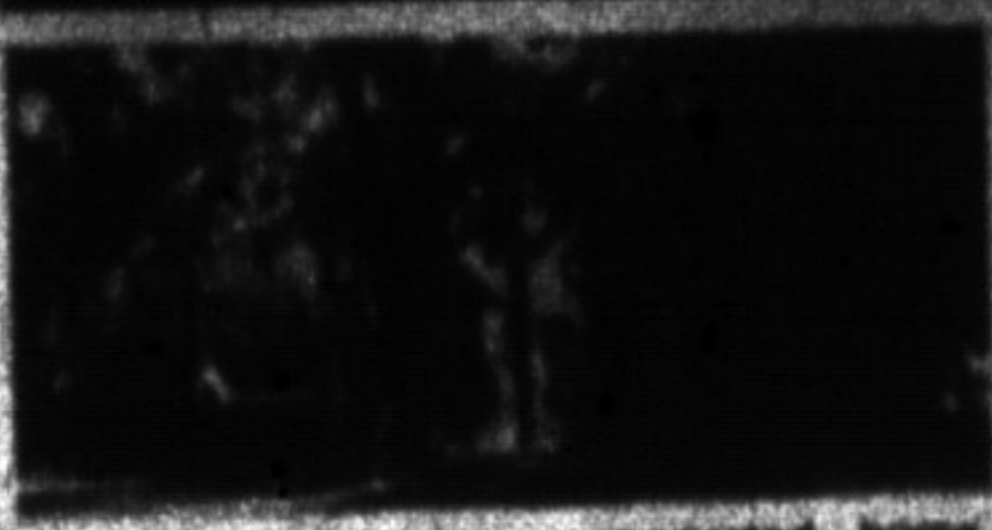
REAL ESTATE LTD. REALTOR



ENJOY COUNTRY LIVING

10 min from 401, 15 min. from Georgetown, near Acton off Hwy. 25. Beautiful 3-bedroom ranch bungalow on 12 acres with barn, trout pond & about 8 acres of maple bush. \$174,000. Call FAITH WITT 844-1777, 827-2933.

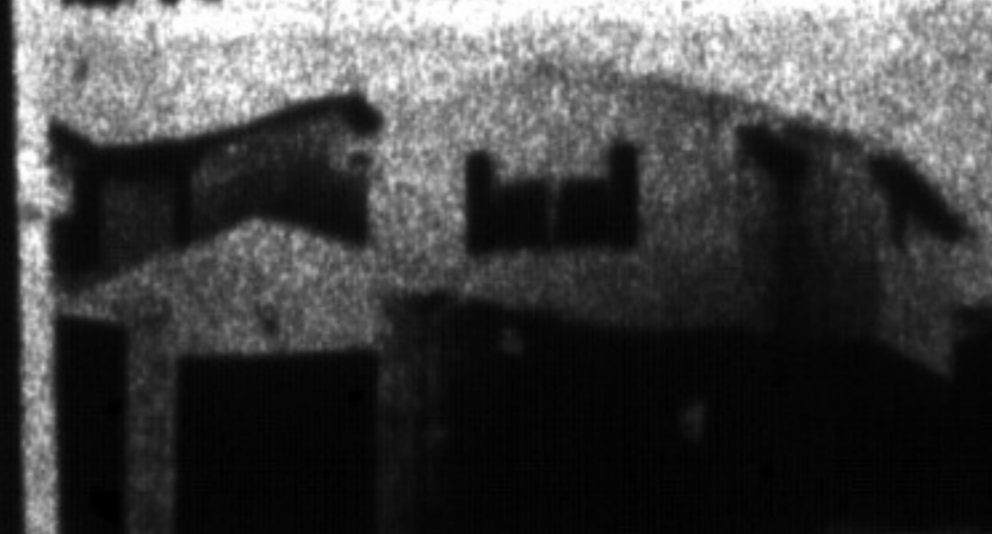
REALTY WORLD Colbeck



Handsome 2 1/2-story, renovated home. May be used as a triplex. Call today! \$119,900. No. 88



Beautifully decorated home, complete with apartment for an added income. \$87,900. No. 94



Stunning 3-story home, beautifully finished. Immediate possession! \$21,900. No. 114

876-1133

105 MAIN ST. EAST MILTON



PRIVATE SALE

2 story detached all brick home with Marley tile roof. 2 car garage paved drive over 2,000 sq. ft. 4 bedrooms, 3 washrooms, main floor family room, large eat in kitchen, freshly painted throughout, 10 ft high ceiling in basement, central vac. system, concrete patio, front with an landscaped fenced in lot.

Priced well below market value for immediate sale

\$88,500


878-2274

or

878-2281

RE/MAX
Milton Area Realty Corporation

GENE McLEOD
878-2365 or 878-2020
Pg. No. 348



EXTRAS GALORE!! Call for a complete list of the goodies included with this very nice brick bungalow, built in a good area with a view of the escarpment. Has living and dining areas, extra washroom and finished recreation room. Value packed with bonuses! Call GENE McLEOD 887,900.

NOTHING LEFT OUT of this 4-bedroom, 4-level home. Hurry to inspect the air conditioned interior with family room and fireplace plus dishwasher. A fully fenced yard has heated in-ground pool and covered patio. What you always wanted but never found! Call GENE McLEOD 898,900.

ON THE FENCE about buying a loanhome? See me and I'll show you a superb 3-bedroom air conditioned unit with extra washroom, finished rec. rm. and fireplace. It's conveniently located, close to shopping, schools and medical offices. Learn more about seriously living by calling GENE McLEOD 883,900.

ESCARPMENT VIEW LOTS. Three lots, all 10 acres, or more with beautiful views and mature trees. One has a pond. Only one route to town. Make plans to build your dream estate here! Call GENE McLEOD FROM \$102,000.

COMPARE BEFORE YOU DECIDE. See this 3-bdrm and you'll agree it has a good lot with fully fenced backyard, handy walk-out from the dining room, appealing neutral broadloom in living room, and attractive upgraded cupboards in kitchen. Looks good all over! Call GENE McLEOD 878,900.

THE BEST OF BOTH WORLDS! Have this beautiful country home and be just 15 mins from town conveniences. Have a view of the escarpment and a creek in your own backyard. Have a brick bungalow with a completely finished lower level. Have a heated garage. Have it all by calling GENE McLEOD 878,900.