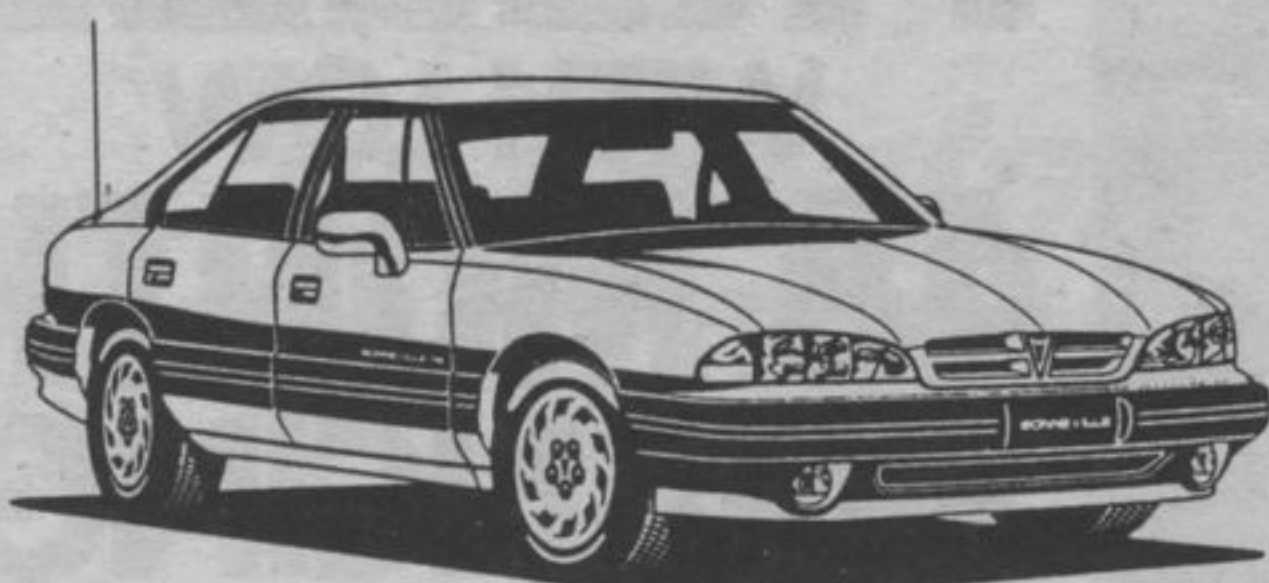


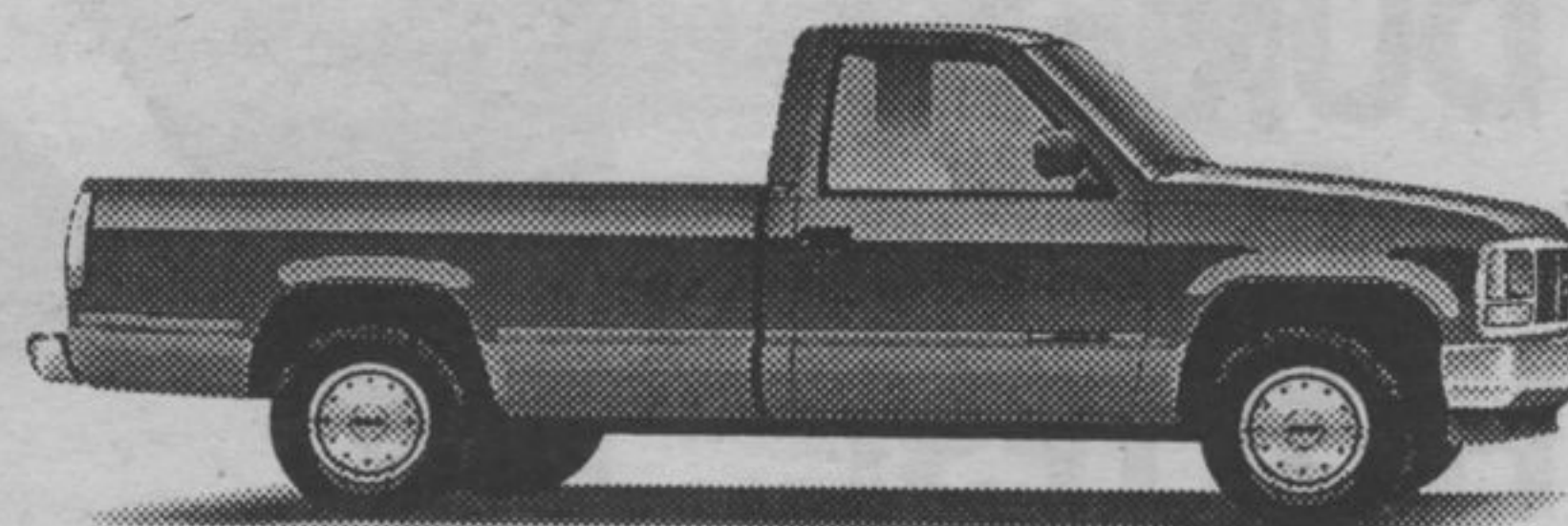
# THE PRICES YOU HAVE BEEN WAITING FOR

# BOXING WEEK SALE

## CASHBACKS AS HIGH AS \$3000 OR 2.9 %



### ONE PRICE NO DICKER STICKER PRICE



### ALL PRICES CLEARLY MARKED ON W/SHIELD OVER 100 VEHICLES AVAILABLE

**1992 GMC S-10 PICK UP**  
 4 cyl, 5 spd, block heater, power steering, cloth seat, 35 M.P.G.  
 Stock#2333

|                  |               |
|------------------|---------------|
| MSRP             | 11,244        |
| GM Discount      | 450           |
| Spadoni Discount | 799           |
| Cashback         | 2,000         |
| (or 2.9%)        |               |
| <b>NO DICKER</b> | <b>\$7995</b> |

**1992 BONNEVILLE SE 4 DR**  
 V6, auto, air conditioning, AM-FM Cassette, tilt, cruise, power windows & door locks, Power drivers seat, fully loaded  
 Stock #2618 MSRP. 25,575

|                  |                 |
|------------------|-----------------|
| Spadoni Discount | 3076            |
| Cashback         | 3000            |
| (or 2.9%)        |                 |
| <b>NO DICKER</b> | <b>\$19,499</b> |

**1992 CHEV. EXTENDED CAB 2 X 4**  
 350 V8, automatic, P/S, P/B, tilt steering, cruise control, cold climate pkg., h/duty shocks  
 Stock #2416 MSRP 20,251

|                  |                 |
|------------------|-----------------|
| Spadoni Discount | 2797            |
| CASH BACK        | 2500            |
| <b>NO DICKER</b> | <b>\$14,954</b> |

**FOR MORE DETAILS,  
SEE YOUR  
SALESPERSON  
DON, ED OR STAN**

**SCHREIBER  
1-800-465-3360  
824-2304**

**MARATHON 229-1491**

