

Section 63

continued from page 1

"And we also help pay for Marjorie House—and it's located in Marathon," he says.

"It's a good thing, and you don't hear us complaining about helping to pay for it."

Ziegler says the real problem with Marathon's taxes is the costs of the capital projects the town has undertaken.

"I'm saying to them, we didn't build your new ski hill, we didn't build your new fire and police station, we didn't build your new municipal office and clinic," he says.

"We didn't put you into

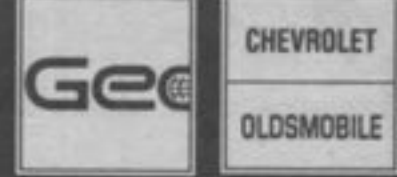
debt, and Terrace Bay isn't going to pay to get you out of debt."

However, Ziegler says he doesn't want to appear to be hostile to Marathon.

"If anything ever happened

in Marathon, we would be the first ones offering assistance," he says.

"Whether it be machinery, fire, police, whatever. The mutual agreements are there, and we're going to be there."



YOUR GM DEALER'S WINTER CLEARANCE COUNTDOWN



STARTS
DEC. 26TH
TO JAN. 4TH 1993

ENDS
JAN. 4TH
WILL NOT BE EXTENDED

HUGE CASH BACKS DURING OUR HOTTEST BOXING WEEK SALE EVER!

20.9%

FINANCING FOR 48 MONTHS

RATE FREEZE WITH LOW 48 MONTH FINANCING ON THOUSANDS OF VEHICLES*

Now the car, van or truck you've always wanted is within easy reach with interest rates frozen at 2.9% for 48 months. Or cash backs as high as \$3000 on a huge selection of '92 models.



1992 CHEVY ASTRO

1992 FULL SIZE CHEVY PICK UPS



80 MAKES AND MODELS OF 92'S



1992 CHEVY CAVALIER

1992 GEO STORM



OR UP TO
\$3,000
CASH BACK

SAVE THOUSANDS OF DOLLARS ON 92'S

AMOUNT FINANCED OVER 48 MONTHS	12 3/4% BANK FINANCING**	2.9% GMAC FINANCING*	GM SAVINGS
\$10,000.00	\$12,815.00	\$10,600.00	\$2,215.00
\$15,000.00	\$19,225.00	\$15,900.00	\$3,325.00
\$20,000.00	\$25,635.00	\$21,200.00	\$4,435.00



1992 PONTIAC BONNEVILLE

1992 BUICK LE SABRE

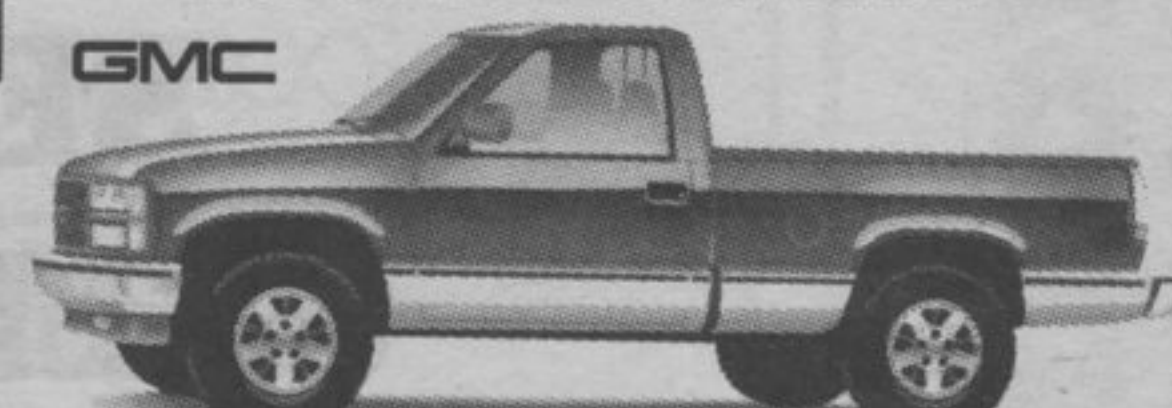


80 MAKES AND MODELS OF 92'S



1992 PONTIAC GRAND PRIX

1992 FULL SIZE GMC PICK UPS



SAVE ON NEW 93'S TOO!

5.9% OR UP TO **\$1500**
48 MONTH FINANCING CASH BACK ON SELECTED MODELS

Enjoy low financing or generous cash backs on selected 1993 models. Financing as low as 2.9% for 12 months or up to \$1500 cash back on a variety of selected models.

* These offers may not be combined or used in combination with any other offer except the College Graduate Program. Offers apply to 1992 new, unused or demonstrator models purchased from dealer inventory. Offer valid until January 4, 1993 while quantities last and applies to retail deliveries only. Cash back offer includes GST. Financing offer available with no limit on the amount financed, to qualified retail buyers financing their purchases through GMAC on a maximum 48 month contract. Example: For \$20,000 financed over 48 months at 2.9% APR, the monthly payment is \$441.80, the cost of borrowing is \$1,206.40 and the total amount to be repaid is \$21,206.40. Assuming a rebate of \$3,000 as the alternative, should you choose the reduced financing rate, legislation requires that the amount of the rebate must be included in the cost of borrowing in order to arrive at an effective interest rate. In the example given, the effective interest rate would be 9.69% APR, and the total cost of borrowing, including the rebate not taken, would be \$4,206.40. Some conditions apply. See your participating dealer for complete details. Check with your local dealer for holiday hours. ** Bank lending rate of 12 3/4% used in comparison chart was in effect December 11, 1992.

