

Costa's celebrating 50 years in business



From left: Teresa, Carmella and Gina in Costa's Foodateria last week.

Gina says she dropped out of school when she was 12 years old to work at the store full time.

"I worked part time before I quit school, but I found it too hard," she says.

Gina delivered groceries to customers in Schreiber using an old mail wagon in the summer and a seven foot toboggan in the winter.

She clearly remembers one delivery she used to make to a CPR boarding house.

There were about 25 Japanese men living there, all of whom had to be fed. So the task of delivering the cases of peas and corn, and bags of onions and potatoes, etc., fell to Gina.

"I'll never forget one time when we had this big winter storm," she says. "I was making a delivery (to the bunkhouse), and I was pulling my toboggan up the subway hill."

She managed to hop onto a delivery sleigh that was going up the hill and was being pulled by a horse.

"So I got all the way up the hill with my groceries on the back of this sleigh," she says. "But then (the driver) noticed me, and he turned around and cracked his whip and yelled 'Get off!'" she laughs. "It was so funny."

Gina and all her groceries

by Darren MacDonald
Staff

In today's terms, \$7.68 might buy you a loaf of bread, a couple of pounds of ham-

burger, and couple of litres of milk.

In 1942, however, \$7.68 was the total sales for the first day of a brand new confec-

tionery store Dominic and Carmella Costa had opened on Columbia Street in Schreiber.

"(My father) worked at the CPR, and he wanted our family

to have something to fall back on in case something happened to him," explains daughter Gina Commisso, who, 50 years later, manages Costa's Fooda-



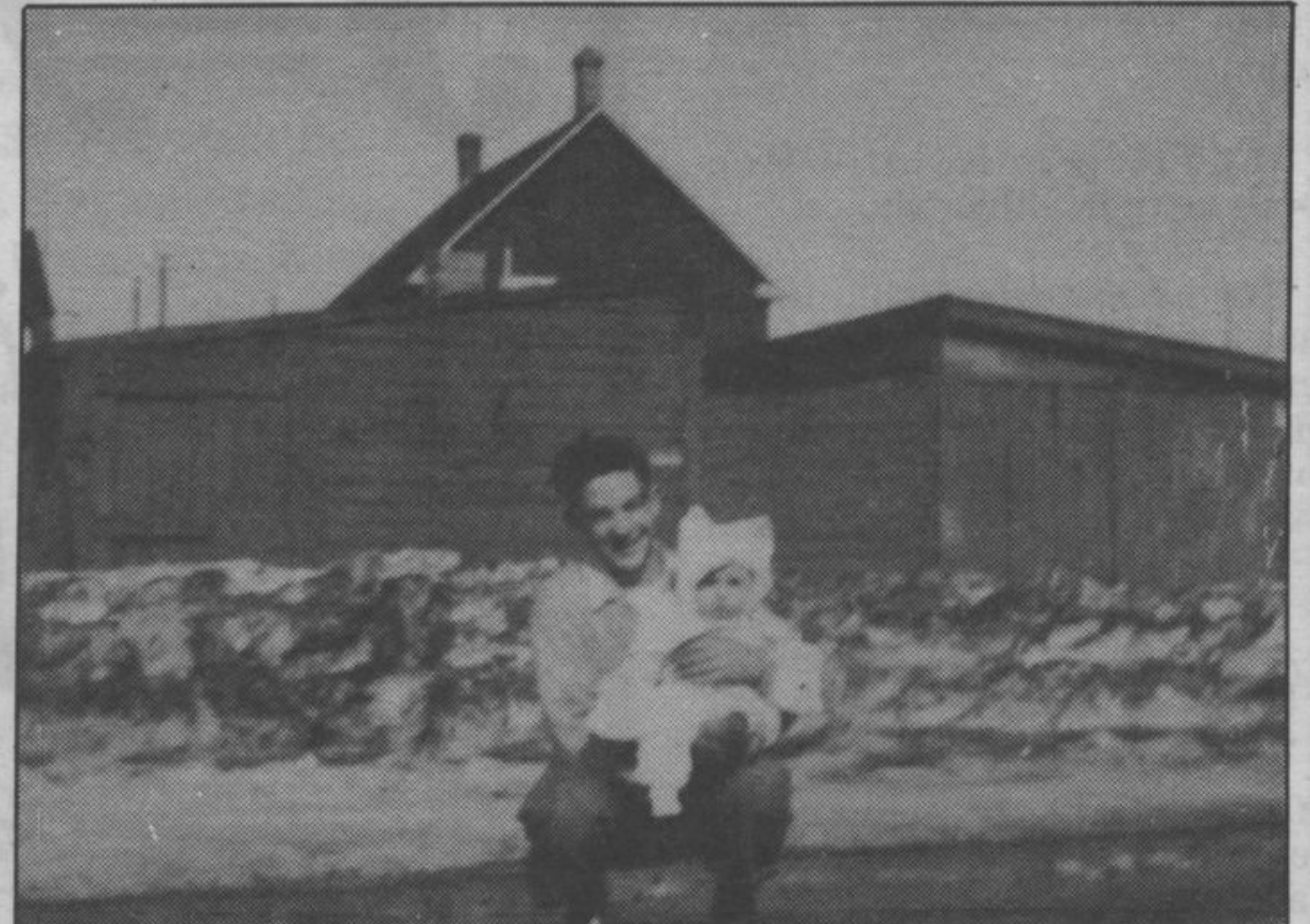
Letters to Santa

Hey kids! Get into the Christmas spirit and send in your letters to Santa. Each letter will be featured weekly until Christmas.

Don't forget to include your name and age on the letter!
All letters must be received by Dec. 18 to be printed.

Send letters to address below:

TERRACE BAY - SCHREIBER NEWS
P.O. Box 579
Terrace Bay, Ontario
POT 2W0



Tony Costa holds a very young Tony Commisso in front of the future site of the Schreiber store in 1953.

teria.

Since opening day way back on Sept. 8, 1942, Costa's has undergone several transformations, and today includes another store in Terrace Bay and employees 25 people in the Schreiber store alone.

fell off the sleigh and tumbled back down the hill.

But Costa's bought their first delivery van in 1948, and the toboggan and mail wagon were put away. Their first delivery driver, John McKevitt, continued on page 9

THANK YOU

From all our families we would like to thank each and every one of you from Schreiber, Rossport, Pays Plat and Terrace Bay, for all your support throughout our 50 years of being in business. It has been our pleasure to serve you and it will continue to be in the years to come!

The Costa & Commisso families