

Did you know . . .

- The International Boundary Line on Lake Superior was laid out by David Thompson in 1825
- The Pukasawa pits, stone lined and large enough to hold three men, may have been used for caribou

blinds, canoe shelters, dwellings, venison pits, fish smoke huts or food storage. The purpose of these ancient pits is still unknown.

•Little Pic River Bridge was the most difficult structural accomplishment during the construction of the Ontario section of the Trans Canada Highway. It

has a 685 ft. span and is 1,130 ft. high. The cost of building the bridge was more than \$2 million.

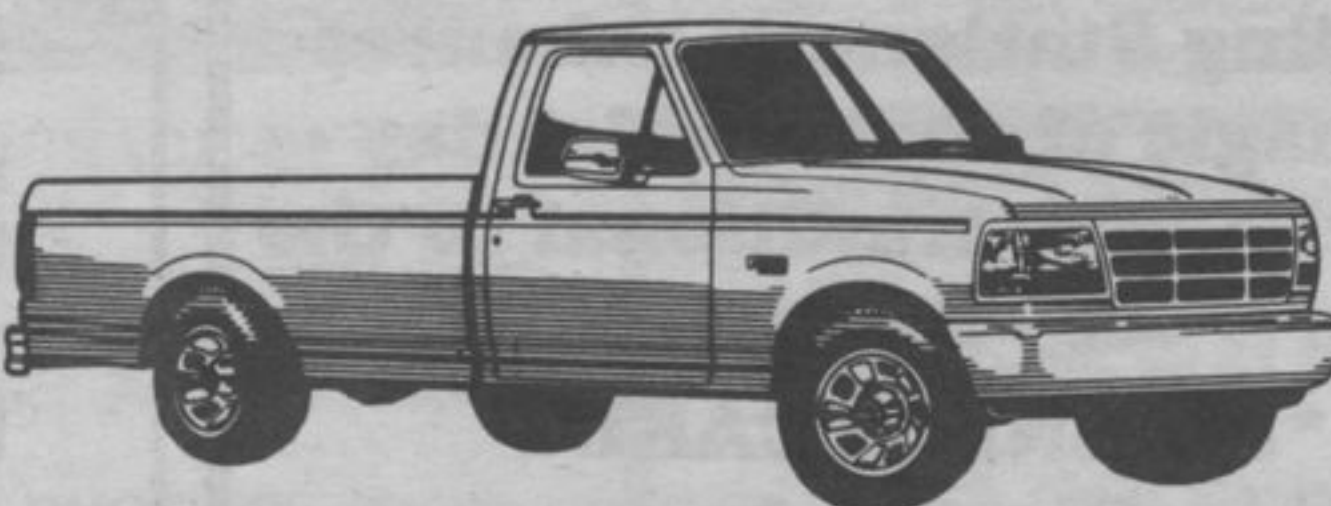
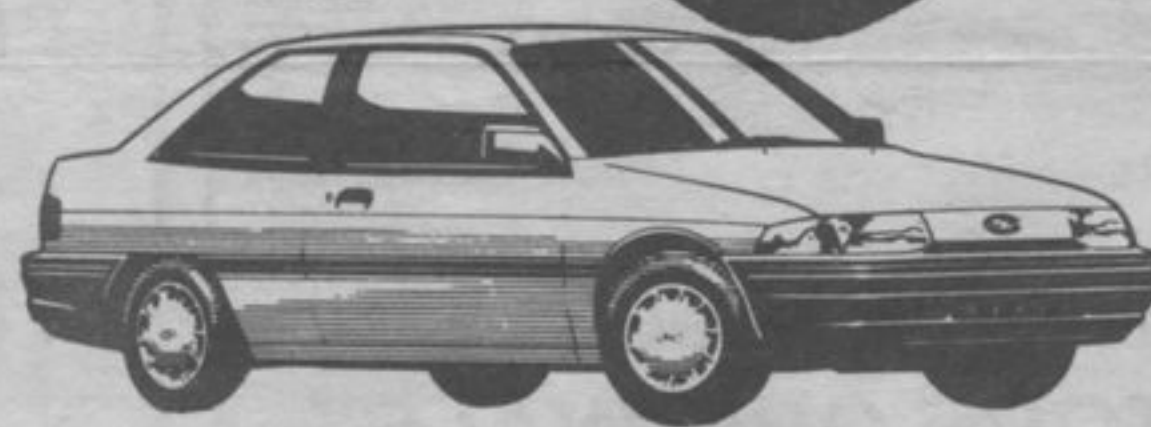
•Rossport is known as the Derby Capital of the North American continent, with its derby dating back to 1937

—source: Terrace Bay Tourist. Info. Centre

FORD & MERCURY DEALERS DISAPPEARANCE CLEARANCE

**NOW YOU
SEE THEM!**

**NOW YOU
DON'T!!**



**FINAL
'92 CLEAROUT**
\$ UP TO 1,500*
CASHBACK

✓CHECK OUT THESE INCREDIBLE DEALS!

VEHICLE LINE ▶ INCENTIVES* ▼	ESCORT/ TRACER FESTIVA	MUSTANG	TEMPO/ TOPAZ	F-SERIES RANGER	AEROSTAR	TAURUS/ SABLE	T-BIRD/ COUGAR	C. VIC/ G.MARQUIS
\$500 Cashback						✓		
\$750 Cashback	✓	✓					✓	✓
\$1,000 Cashback				✓				
\$1,250 Cashback								
\$1,500 Cashback					✓			
OR								
5.9% Financing	✓			✓	✓			
6.9% Financing		✓	✓	✓				

GREAT YEAR END CLEARANCE DEALS RIGHT ON THE WINDSHIELD!

**RIGHT
PLACE**



FORD

**THIS EVENT
VANISHES
SOON!**



MERCURY

**RIGHT
NOW!**

SEE YOUR ONTARIO FORD AND MERCURY DEALERS

*Financing and cashback offers may not be combined. With maximum financing term of 48 months, on approved credit, \$15,000 at 5.9% equals \$351.59 per month for 48 months, cost of borrowing (C.O.B.) is \$1,876.32. For \$15,000 at 6.9%, \$358.50 per month for 48 months, C.O.B. is \$2,208.00. With cashback taken instead of financing, the financed amounts at 10.75% (retail cost of credit on August 11, 1992) over 48 months are: \$1,500 cashback, financed amount is \$13,500 and equals \$347.28 per month (C.O.B. is \$3,169.44); \$1,250 cashback, financed amount is \$13,750 and equals \$353.71 per month (C.O.B. is \$3,228.08); \$1,000 cashback, financed amount is \$14,000 and equals \$360.14 per month (C.O.B. is \$3,286.72); \$750 cashback, financed amount is \$14,250 and equals \$366.57 per month (C.O.B. is \$3,345.36); \$500 cashback, financed amount is \$14,500 and equals \$373.00 per month (C.O.B. is \$3,404.00). Limited time offer available on 1992 and prior year model retail purchases from dealer inventory only. See dealer for details.
Ontario FMDA, P.O. Box 2000, Oakville, Ontario L6J 5E4