

# Always use proper safety equipment

continued from page 6

chin strap strength and the minimum area of the head to be covered by the helmet are specified in the standard.

"The CSA standard is stricter than either of the U.S. cycling helmet standards," states Michael Lewis, Director of Communications for the Canadian Standard Association. "If a helmet meets the CSA standard, it's a better helmet as far as safety goes."

Every year across Canada, many people - especially children - are seriously injured or killed while cycling because they don't wear cycling helmets. Most of these accidents happen close to home and are caused by falls, not collisions.

"Although Canada has an excellent standard for cycling helmets, relatively few children or adults wear them," adds Lewis. "A recent survey revealed an overall helmet

wearing rate of 11.9 per cent. Only 8.5 per cent of children 9 and under, and 3.7 per cent of children 10-14 wear helmets."

Experience with helmet use by both motorcyclists and in minor league hockey has shown that helmets reduce fatalities and head injuries. This evidence has been so definitive, that all provinces have legislated the use of motorcycle helmets. For similar reasons, the wearing of head protection has been mandated for children playing hockey, and has resulted in a dramatic reduction of head, eye and face injuries.

When purchasing a helmet, certain factors must be considered; type (soft, thin or hardshell), weight, coolness, fit and price.

### Type of helmet

Most bicycle helmets contain a thick foam liner made of expanded polystyrene that absorbs energy during impact.

Softshell helmets are made of foam only, and may not protect the rider against sharp objects which may puncture the helmet.

Hardshell helmets have a thick layer of plastic or fiberglass covering the foam. This layer may protect the rider from the penetration of sharp objects. Such helmets may also withstand occasional bumps during handling with-

out damaging their exterior. However, these helmets are heavier than softshell.

Thinshell helmets consist of a thin or "microshell" layer of plastic covering the foam liner. This helmet is similar to the hardshell helmets but is much lighter in weight while improving the durability of the outer surface of the foam liner.

continued on page 9

## WINNER

Lake Superior Family Sno Goers Bicycle Winner on July 15 was Paul Gerlach

Visit your classified or display ad today!  
Call 825-3747

## SUPERIOR JEWELLERS

welcomes everyone to celebrate our

# GRAND OPENING

Thurs. July 23 - Sat. August 1st

**10% - 20% DISCOUNT**

on all merchandise in store

Drop in and meet Wendy

for a free ring cleaning



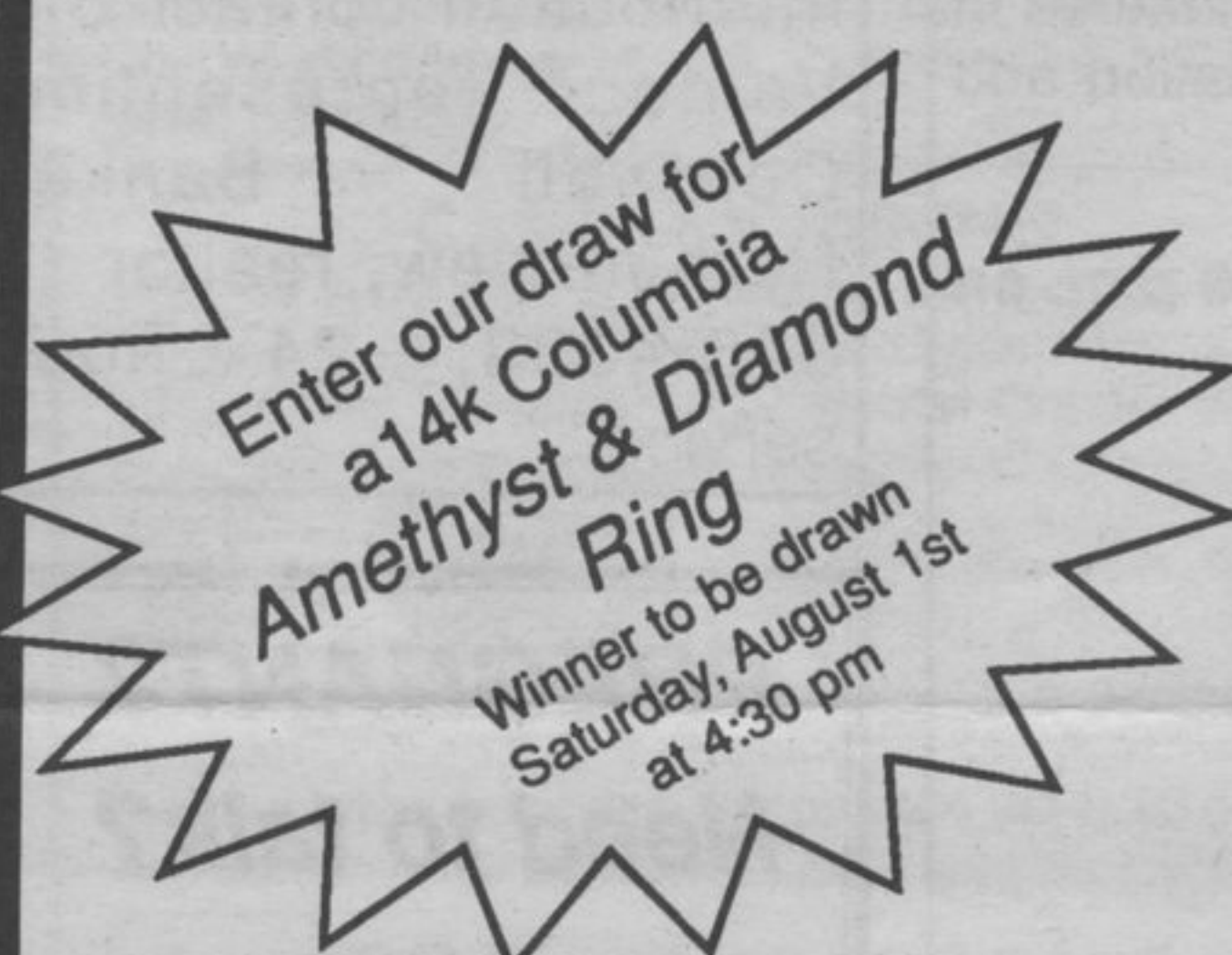
Store Hours:

9:00 a.m. - 5:30 p.m.

Monday - Saturday

825-9611

8 Simcoe Plaza



Free Gift Wrapping  
Visa & Mastercard Accepted

## AT YOUR SERVICE/A VOTRE SERVICE



Gilles Pouliot, MPP Lake Nipigon

Helping You is My Job!

CALL TOLL FREE 1-800-268-7192

Monday to Friday during business hours

Gilles Pouliot, Depute provincial, Lac Nipigon  
Mon Travail, C'est De Vous Aider

TELEPHONEZ SANS FRAIS: 1-800-268-7192

Du Lundi au Vendredi durant les heures regularies de travail

FAX # 1-416-963-1568



TOWNSHIP OF SCHREIBER

PUBLIC NOTICE

CLOSING PART OF SERVICE ROAD  
WALKER'S LAKE

Take notice that the Municipal Council of the Township of Schreiber, will take into consideration the passing of, and if approved, will pass at its meeting to be held, August 17, 1992, or an adjourned meeting thereof, at the hour of 7:00 pm in the afternoon, at the Council Chambers, Municipal Office, 608 Winnipeg Street.

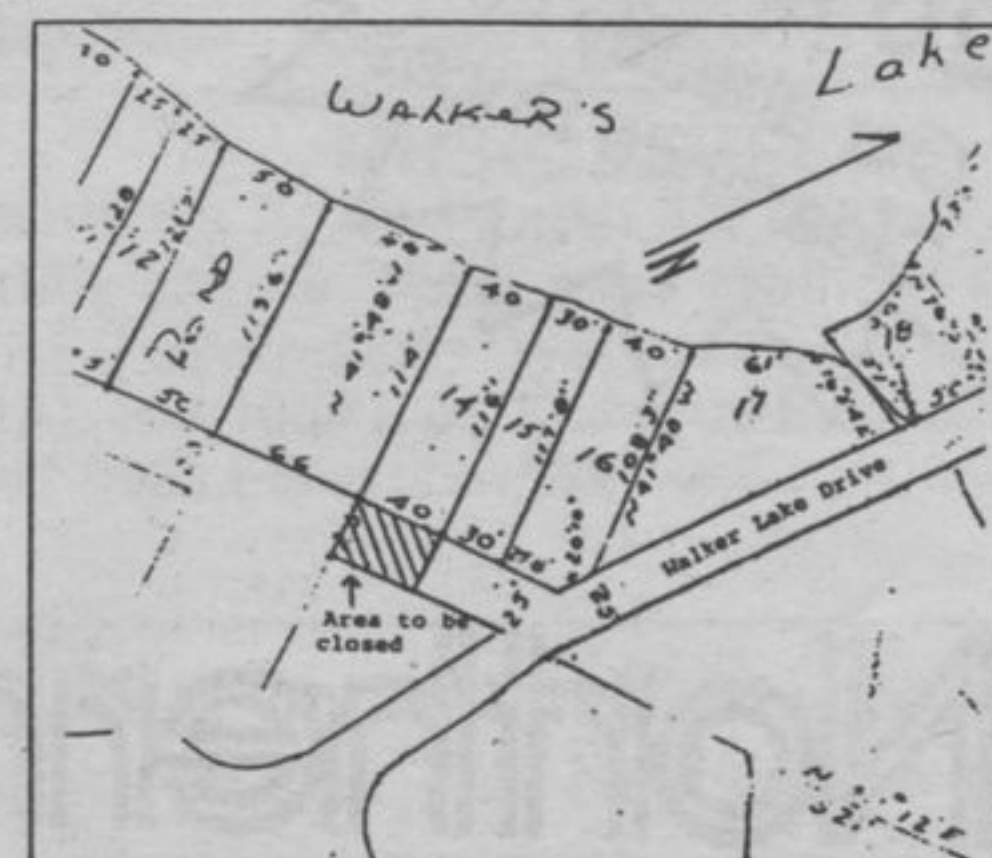
A By-Law to stop and close the public street or highway more particularly described as follows:

A portion of a unopened service road 40 feet by 25 feet, more particularly described as; Commencing at the south west corner of Lot 14, Plan M-55, Walker Lake, and continuing east a distance of 40 feet on the north limit of said unopened service road, thence south at the southeast corner of lot 14, a distance of 25 feet, thence west 40 feet on the south limit of the said road allowance, thence north 25 feet to the point of commencement.

And take further notice that the said Council will at the time and place above mentioned hear any person who claims that his land will be prejudicially affected by the said by-law, and who applied to be heard. The said by-law may be inspected during business hours by any interested party at the Office of the Clerk-Treasurer, Township Municipal Office, 608 Ontario Street, Schreiber, Ontario prior to the passing thereof.

Dated at Schreiber, this 9th day of July, 1992.

A.J. Gauthier  
Clerk-Treasurer



## BUILDING LOTS FOR SALE

Figliomeni Bros. Subdivision has final approval and lots available for sale.

All lots have been surveyed.

Interested, please call:

Dominic - 824-2420 Frank - 824-2023

Fred - 824-3341 Tony - 824-2027

