

# Taurus

## Best in Class

"... the Taurus remains hard to beat"  
*Car & Driver*

Ford Taurus has been on every *Car & Driver* Ten Best list since 1986.

**FORD TAURUS L**  
4-Door Sedan

**TOYOTA CAMRY LE**  
4-Door Sedan

**HONDA ACCORD EX**  
4-Door Sedan

**FEATURES**

- 3.0 LITRE V6 ENGINE
- AUTOMATIC TRANSMISSION
- DRIVER'S SIDE AIRBAG
- AIR CONDITIONING
- AM/FM STEREO CASSETTE
- CLEARCOAT METALLIC PAINT
- POWER WINDOWS AND DOOR LOCKS
- TINTED GLASS
- REAR SEAT HEAT DUCTS
- REMOTE FUEL FILLER DOOR
- REMOTE TRUNK RELEASE
- INTERVAL WIPERS
- DUAL POWER MIRRORS
- TILT STEERING WHEEL AND SPEED CONTROL
- FULL WHEEL COVERS
- LIGHT GROUP
- MAP LIGHTS
- SIDE WINDOW MOULDINGS
- ENGINE BLOCK HEATER
- FLOOR MATS

**FEATURES**

- 3.0 LITRE V6 ENGINE
- AUTOMATIC TRANSMISSION
- DRIVER'S SIDE AIRBAG
- AIR CONDITIONING
- AM/FM STEREO CASSETTE
- CLEARCOAT METALLIC PAINT
- POWER WINDOWS AND DOOR LOCKS
- TINTED GLASS
- REAR SEAT HEAT DUCTS
- REMOTE FUEL FILLER DOOR
- REMOTE TRUNK RELEASE
- INTERVAL WIPERS
- DUAL POWER MIRRORS
- TILT STEERING WHEEL AND SPEED CONTROL
- FULL WHEEL COVERS
- LIGHT GROUP
- MAP LIGHTS

**FEATURES**

- 2.2 LITRE 4 CYLINDER (V6 NOT AVAILABLE)
- AUTOMATIC TRANSMISSION
- DRIVER'S SIDE AIRBAG
- AIR CONDITIONING
- AM/FM STEREO CASSETTE
- CLEARCOAT METALLIC PAINT
- POWER WINDOWS AND DOOR LOCKS
- TINTED GLASS
- REAR SEAT HEAT DUCTS
- REMOTE FUEL FILLER DOOR
- REMOTE TRUNK RELEASE
- INTERVAL WIPERS
- DUAL POWER MIRRORS
- TILT STEERING WHEEL AND SPEED CONTROL
- WHEEL CAPS

**\$18,660\***

WITH **\$500 CASHBACK** APPLIED FOR A LIMITED TIME

**PLUS**

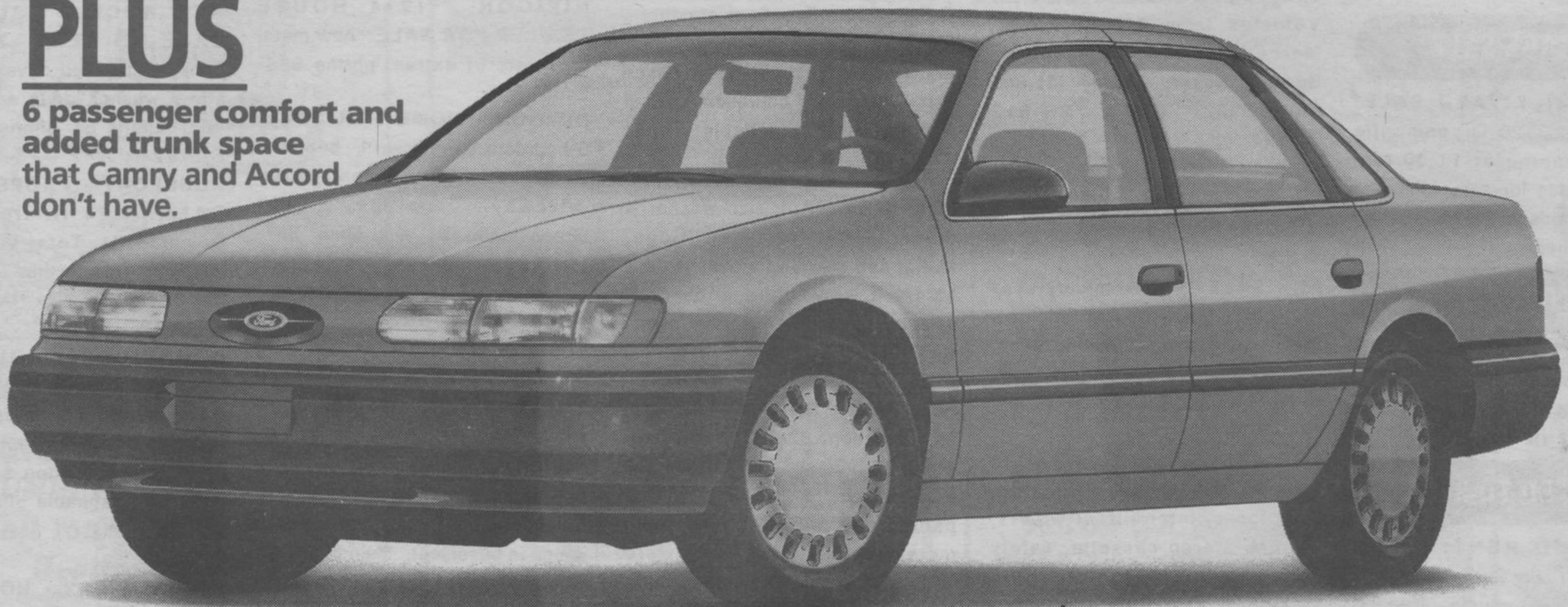
6 passenger comfort and added trunk space that Camry and Accord don't have.

**\$23,458\***

\$4,798 more than comparably equipped Taurus.

**\$20,345\***

\$1,685 more than comparably equipped Taurus.



SEE YOUR ONTARIO FORD DEALER AND DISCOVER WHY TAURUS IS HARD TO BEAT.



\*Comparison based on latest available MSRP information; excludes freight and applicable taxes. Dealers may sell for less. Price of \$18,660 for the Taurus L includes \$500 cashback, Preferred Equipment Package 171A and options 43R and 902. May require dealer order. Ontario FMDA, P.O. Box 2000, Oakville ON L6J 5E4