

Northern Insights

Continued from page 2

under the IMA, NAN must be given 30 days to comment on any proposals for:

- applications for land use permits, licences of occupation, letters patent and land use plans;

- applications for licences to harvest wild rice, to fish commercially or to trap;

- applications for tourist establishment licences;

- forest management agreements, timber management agreement plans and district cutting licences;

- applications for mining leases;

- potential hydro electric developments and transmission corridors; and

- applications for environmental approvals and applications for environmental assessment exemption and designation.

Jim Morris, the Deputy Grand Chief of NAN, told a recent televised board meeting of the Wawatay Communications Society this right to be

notified is "a very powerful tool. Whereas before all a company had to do was get a licence from Toronto, and just go in and do whatever they want to do. Under the IMA, those companies cannot do that anymore. They have to inform the community, they have to inform Nisnawbe-Aski Nation,

and then Nishnawbe-Aski and the bands have 30 days with which to respond."

In that same presentation, Morris spelled out NAN's five-stage plan for actually achieving self-government. We'll discuss those plans in the next issue.

To be continued

Tired of those hefty bank charges?
The Schreiber Community Credit Union Ltd. is pleased to announce that we are now offering Personal Chequing at unbeatable prices.



NOTICE SCHREIBER HYDRO CUSTOMERS

All Hydro Accounts must be paid in full by the end of the month the current account is due, or your power will be disconnected.

Disconnection and Reconnections are an additional charge of \$25.00 each.

Electric Meter Seals are for your protection, removal of the seal is unlawful. Should access be necessary, contact our Emergency Pager System.

Dial 824-2973

1. Listen for dial tone, when dial tone stops
2. Dial pager number ..052
3. Listen for beep and immediately give your name and telephone number, repeat this twice.
4. Hang up and wait for your call to be returned.

Thank You.

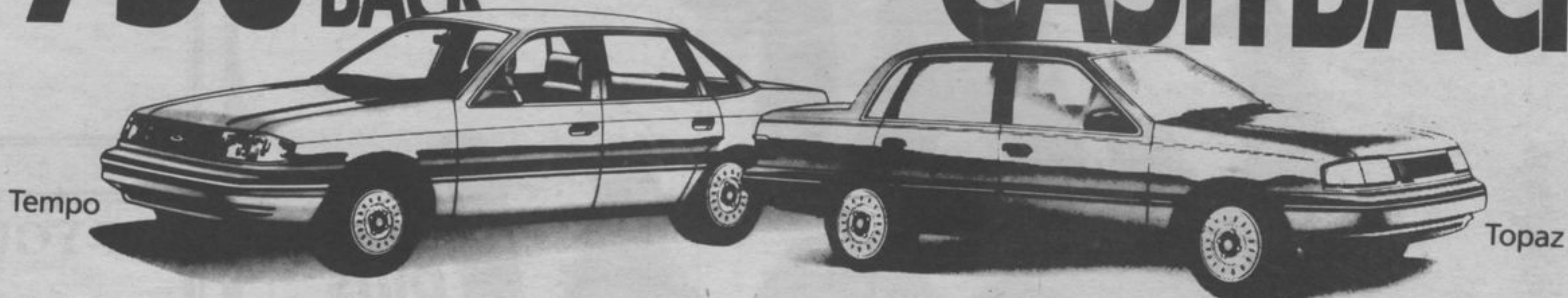
Classifieds
 Let your words do the walking



THE FUN ENDS JULY 10

In Memoriam
 Ukrainec: In loving memory of Peter, dear husband, father and grandfather who passed away July 7, 1989.
*Two years have passed since that sad day,
 When our dear father, God called him away,
 As God took you in his loving arms
 And took away all your pain,
 Our hearts were crushed and sore;
 But knew we could do no more.
 You tried so hard to stay with us,
 But your fight was all in vain.
 Deep in our hearts your memory is kept,
 To love and to cherish and never forget.
 Today, tomorrow our whole lives through,
 We will always love and remember you.
 We bless the years we had with you, Dad,
 And leave the rest with God.
 Forever remembered, loved and sadly missed by wife Lillian, daughters Melody, Karen and sons-in-law and your grandchildren.*

8.9% 48 MONTH FINANCING*
\$750 CASH BACK† **\$1500 CASH BACK**



8.9% 48 MONTH FINANCING*
\$1000 CASH BACK† **\$2000 CASH BACK**



8.9% 48 MONTH FINANCING OR UP TO \$1,000 CASH BACK ON A WIDE SELECTION OF CARS AND TRUCKS**

FORD NORTHWEST ONTARIO FORD & MERCURY DEALERS

WE GIVE YOU MORE!

*Offers on Tempo and Topaz of (1) 8.9% financing plus \$750 cash back or (2) \$1,500 cash back, and on F-Series of (1) 8.9% financing plus \$1,000 cash back or (2) \$2,000 cash back are mutually exclusive. 8.9% financing to a maximum 48 months on approved credit. For example: \$15,000 financed at 8.9% annual percentage rate for a 48 month term, monthly payment is \$372.56, cost of borrowing is \$2,882.88, total amount to be repaid is \$17,882.88. If the F-Series \$2,000 cash back is chosen instead of the cash back/financing combination, the effective interest rate is 11.78% over 48 months and the total cost of borrowing including the rebate not taken would be \$3,882.88. If the Tempo/Topaz \$1,500 cash back is chosen the effective interest rate is 12.13% and the total cost of borrowing would be \$2,672.24 (based on a \$10,000 loan). No down payment required. Offer good on in-stock vehicles only. Some conditions apply. Offers in effect for a limited time at northwestern Ontario Ford/Mercury dealers in: Marathon, Schreiber, Nipigon, Thunder Bay, Sioux Lookout, Dryden, Fort Frances, Kenora. Vehicles may not be exactly as depicted. See dealer for details.
 **Cash back and reduced financing offers are mutually exclusive. Cash back varies with vehicle purchased. Cash back on 1991 Festiva, Escort, Tracer, Mustang, Probe, Taurus, Sable, Thunderbird, Cougar, Ranger and Aerostar. Offer good on in-stock vehicles only. If reduced financing is chosen instead of the cash back, based on an example of \$15,000 financed and \$750 cash back as the option, the effective interest rate would be 11.07%.
 †This offer cancels and replaces all other programs previously advertised and may not be combined with any other offer.

BUY RENT LEASE
CAT
TRACK-TYPE LOADERS

- NEW OR USED UNITS
- GOOD SELECTION
- SPECIAL FINANCING

CALL: RICHARD SIEFRIED
 POWELL EQUIPMENT
 (807) 475-7535

Powell **CAT**