

BELLUZ Realty Ltd.
 Simcoe Plaza
 Box 715
 Terrace Bay
 Ontario
 P0T 2W0
 Office - 825-9393
 Home - 824-2933

JURIS ZDANOVSKIS
 BROKER

MON CHERIE HAIR SALON
 Ladies Men
 (807) 824-3080
 Mountainview Plaza
 Hwy. 17, Schreiber



The Terrace Bay-Schreiber News

Volume 45 No. 17
 Tuesday April 23, 1991

News Stand **.50** Cents incl. G.S.T.

SUPERIOR SHORELINE INSURANCE LTD.

We represent 8 different insurance companies so that we can get the best rates for you:



Liz Boutillier
 Broker

- *Home
- *Auto
- *Business
- *Air Craft
- *Mobile Home

825-9492

SERVING THE COMMUNITIES OF TERRACE BAY - SCHREIBER - ROSSPORT AND JACKFISH LAKE

Birchwood management not talking to employees

A request by the non-management employees of Birchwood Terrace that the Labour Management Committee be convened to discuss a reorganization created by recent cutbacks was flatly denied last week, according to a press release issued last Friday.

A declining number of residents at the Birchwood Terrace senior citizens home in Terrace Bay has forced administration to make cutbacks in staffing effective in May.

Adrienne Phillips, spokesperson for the non-unionized employees, said Birchwood Terrace staff understand "there has to be a cut" but, not all are happy with the way administration is structuring the 22 per cent reduction in staff.

Twenty-four seniors live at the sixty-two bed residential care facility which employs 21 part-time and three full-time staff.

On March 14, the staff were informed of the cutbacks during individual ten minute meetings with Michael Yakamovich, administrator of Pinewood / Birchwood Terrace, and Chris Joubert, administrative services supervisor at Birchwood Terrace.

Questions by the staff were later brought to the attention of Mr. Joubert with confusing results. Members of the Labour Management Committee, representing the non-management staff of Birchwood Terrace then asked to meet with Mr. Yakamovich. This request was denied.

Lawyer Gregg Cancade was then retained by the employees to negotiate on their behalf.

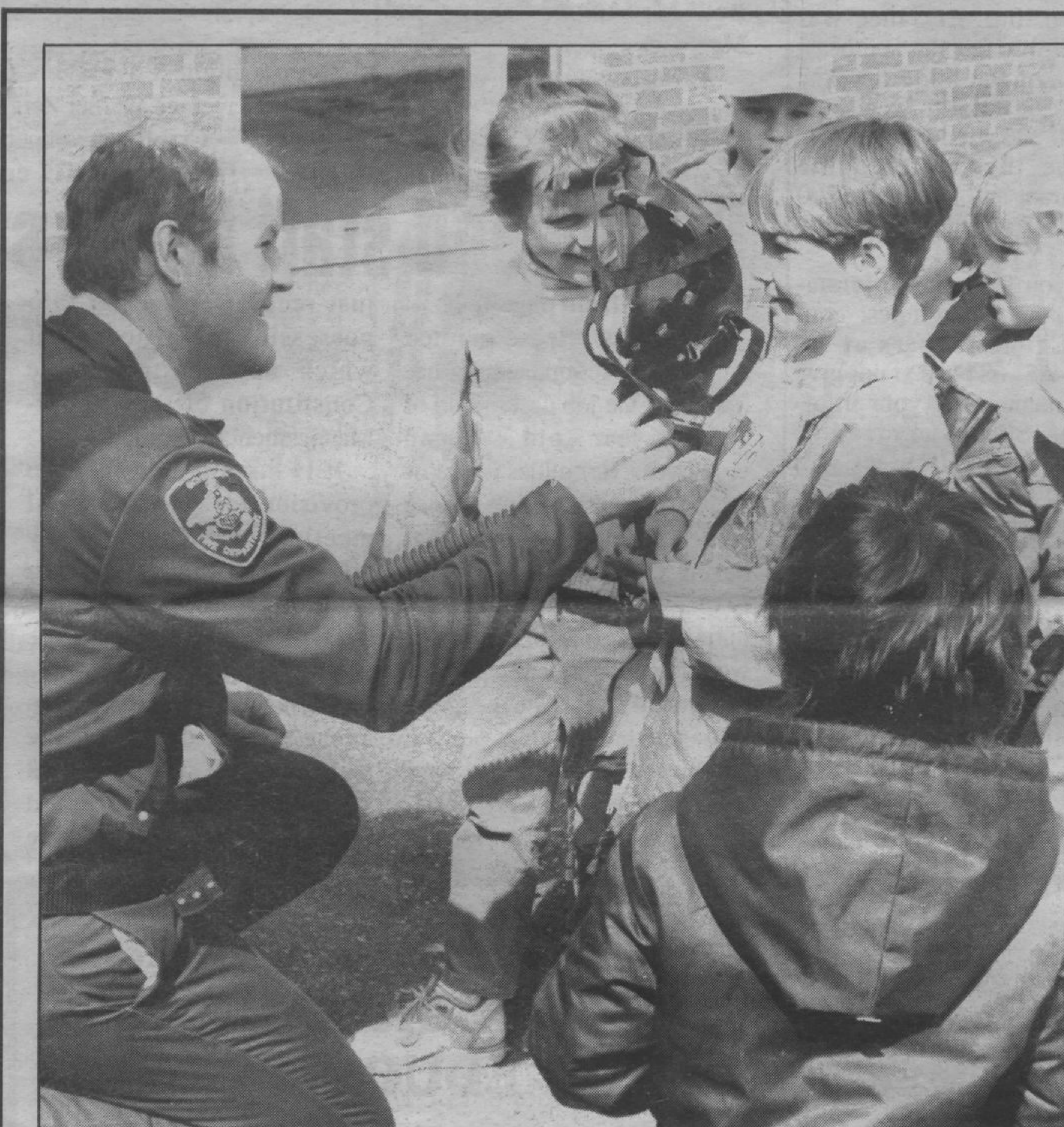
He met with Mr. Yakamovich and their legal representative on April 17.

Cancade indicated that after a free flowing and frank discussion he again requested, on behalf of the employees, that the Labour Management Committee be convened to discuss the reorganization. This request was flatly denied.

In the press release, Cancade indicated that the labour side of the Labour Management Committee is frustrated and angry with management's continued stonewalling.

The 24 non-management employees believe it is extremely important that their input be considered in the reorganization to ensure that the care required by the residents is kept up to safe standards, he said.

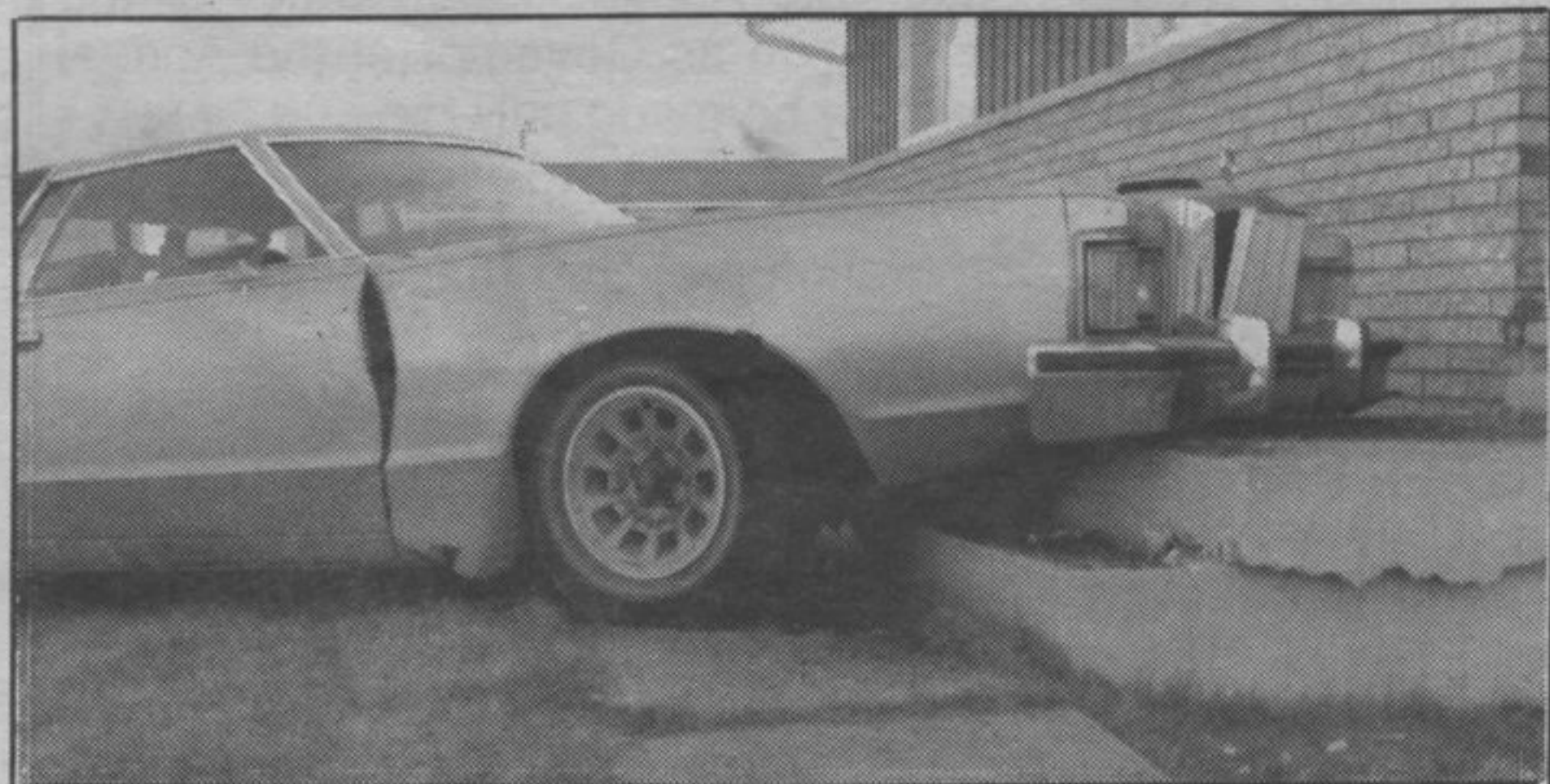
Continued on Page 2



A breath of fresh air anyone

Gene Ross, Deputy Chief of the Schreiber Volunteer Fire Department explains to members of Schreiber Public School's Senior Kindergarten class why firemen need a mask and air when fighting fires. The class toured the fire hall on Wednesday, April 17.

photo by Rob Cotton



The driver lost control of this vehicle causing it to crash into the front of 78 Terrace Bay Heights in Terrace Bay.

Car crashes into Terrace Bay home

The residents of 78 Terrace Heights received an unwelcome visitor when vehicle smashed into the front of their home on Sunday April 14, injuring three people and causing extensive structural damage to the building.

The car was moving at a high rate of speed when the driver lost control, crossed the lawn and crashed into the front of 78 Terrace Heights.

Three people were treated for minor injuries at McCausland Hospital.

Charges are pending following further investigation.

Daylight drunk driver charged

Drunk drivers do not necessarily wait until the dark of night to hit the road. On Friday, April 12, the Terrace Bay Police Service was informed about a vehicle being driven carelessly.

Continued on page 2

HABITATIONAL PROGRAM CREDITS

- Claims free credit
- Age credit
- No smokers credit
- Alarm Credit
- No aux. heat credit
- Newer Home credit



TERRACE BAY INSURANCE LTD.

A COMPLETE INSURANCE SERVICE
 COMPETITIVE RATES FOR QUALITY COVERAGE

SIMCOE PLAZA TERRACE BAY 825 - 3246

- * Home * Business * Auto
- * Cottages
- * Recreational Vehicles * Etc.

AUTOMOBILE PROGRAM CREDITS

- Ideal Young Driver Credit
- Multi Vehicle Credit
- Mature Driver Credit