



**NOTICE**  
**THE NORTH OF SUPERIOR DISTRICT ROMAN CATHOLIC SEPARATE SCHOOL BOARD**  
**LE CONSEIL DES ECOLES SEPARÉES CATHOLIQUE DU DISTRICT DE SUPERIEUR-NORD**

**TAKE NOTICE THAT**

The North of Superior District Roman Catholic Separate School Board on the 13th day of December, 1990 passed By-Law Number 90-1 to authorize the borrowing of money by the issue and sale of debentures of the said Board in the principal amount of \$236,000.

1. The purpose for which the money is to be borrowed is for the construction of an elementary school and the purchase of furniture and equipment.
2. The amount to be borrowed is \$236,000 for 20 years on the security of the said debentures, which shall be a charge upon the schoolhouse property and premises and any other real or personal property vested in the said Board and upon the separate school rates collectible by the said Board.
3. The Debenture is to be dated the 10th day of January 1991 and shall be payable in one installment of principal on the 10th day of January in the year 2011. On presentation and surrender of this Debenture, the principal sum of Two Hundred and Thirty-Six Thousand Dollars (\$236,000) and will pay interest on the said principal sum, in like money from the 10th day of January 1991 at the rate of 10.55% per annum payable semi-annually on the 10th day of July and the 10th day of January in each year of the currency of this Debenture.

Cosimo M. Commisso Chairman of the Board  
 G.J. Matys Secretary-Treasurer of the Board

**Ranked tenth out of 19**

**Terrace Bay municipal tax rate reasonable**

by Rob Cotton  
 the News

Terrace Bay sits right in the middle of the pack when it comes to municipal tax rates in Thunder Bay District.

The average total charge per household for general tax, sewer charges and school taxes was \$990 in 1989, placing Terrace Bay tenth highest among the 19 municipalities in the District.

Nine municipalities, on average, were charging higher rates

than Terrace Bay and nine charging lower rates.

In terms of school taxes, which are set by the school board, the township is fifth highest at an average of \$512 per household.

In Terrace Bay the sewer charges are built into the general tax which averaged \$423 per household in 1989.

When the average water charge of \$55 per household is added to this the average general charge per household charge was \$478.

"The only municipalities

charging, on average, a lower general municipal rate per household are the rural municipalities around Thunder Bay," said Dave Fulton, clerk-treasurer for the Township of Terrace Bay.

"These communities often don't provide as many services as Terrace Bay does - for instance, they don't always have sewer and water, garbage pick-up or recreation services," he continued.

The figures are released yearly by the Ontario Ministry of Municipal affairs.

**Ice panels and presents**

**Kids' crafts for the New Year**

by Carolyn Williams

Christmas is over, but the spirit of love and giving still radiate in everyone's heart. In keeping with that spirit, I have two ideas. The first is a way for children to show their parents how helpful they plan to be in the New Year. The second is a way for families to enjoy the winter together.

**A Year Long Present**

**Materials:**

- Construction paper - color of your choosing
- Scissors
- Staple or glue
- Decorations (stickers, glitter, pictures cut from old Christmas cards, etc.)

**Method:**

1. Cut out 2 fat stocking shapes from construction paper
2. Staple or glue the edges together; fold the tops down.
3. Decorate the stocking
4. Cut out 12 small cards from construction paper
5. Fill stocking with the 12 cards (one for each month) with a promise - one per card - with something you will do for the one you love, during that month.

\* Be sure you choose promises that won't be hard to keep when the time comes

**Ice Panels**

**Materials:**

- Tin pie plate
- Yarn - enough to be coiled in

**pan**

- water
- bits of leaves, holly, nuts, stones, etc.

**Freezing weather**

**Method:** 1. Coil your yarn around the bottom of tin pie pan, with an extra length off the side to use as a hanger.

2. Pour some water into the bottom of the pan; put it outside. when it's partially frozen, arrange the leaves, stones, nuts, etc in a decorative manner.

3. When they are frozen in place, gently press the panel out of pie plate ( if it doesn't come out easily, dip the bottom briefly in hot water) and hang it from a tree branch or on the side of the house.



**The Ontario Federation of Snowmobile Clubs**

Reminds you to stick to the Trail  
 Every year, in Ontario, people are hurt and killed because they snowmobile on unsafe ice or ride on highways.

The Ontario Federation of Snowmobile Clubs urges you to

**STICK TO THE TRAIL**

and have an enjoyable and safe snowmobiling season

**Be Part of the "WINNER'S CIRCLE"!**

The War Amputations of Canada

**Schreiber Hydro Electric Commission Christmas Lighting Display Winners for 1990**

- First Place : Rosaire & Hazel Garneau  
 Second : Bruce & Terry Thompson  
 Third : Bill & Annette Campbell  
 Thank you to our last year's winners for the 1990 judging.  
**Happy New Year**

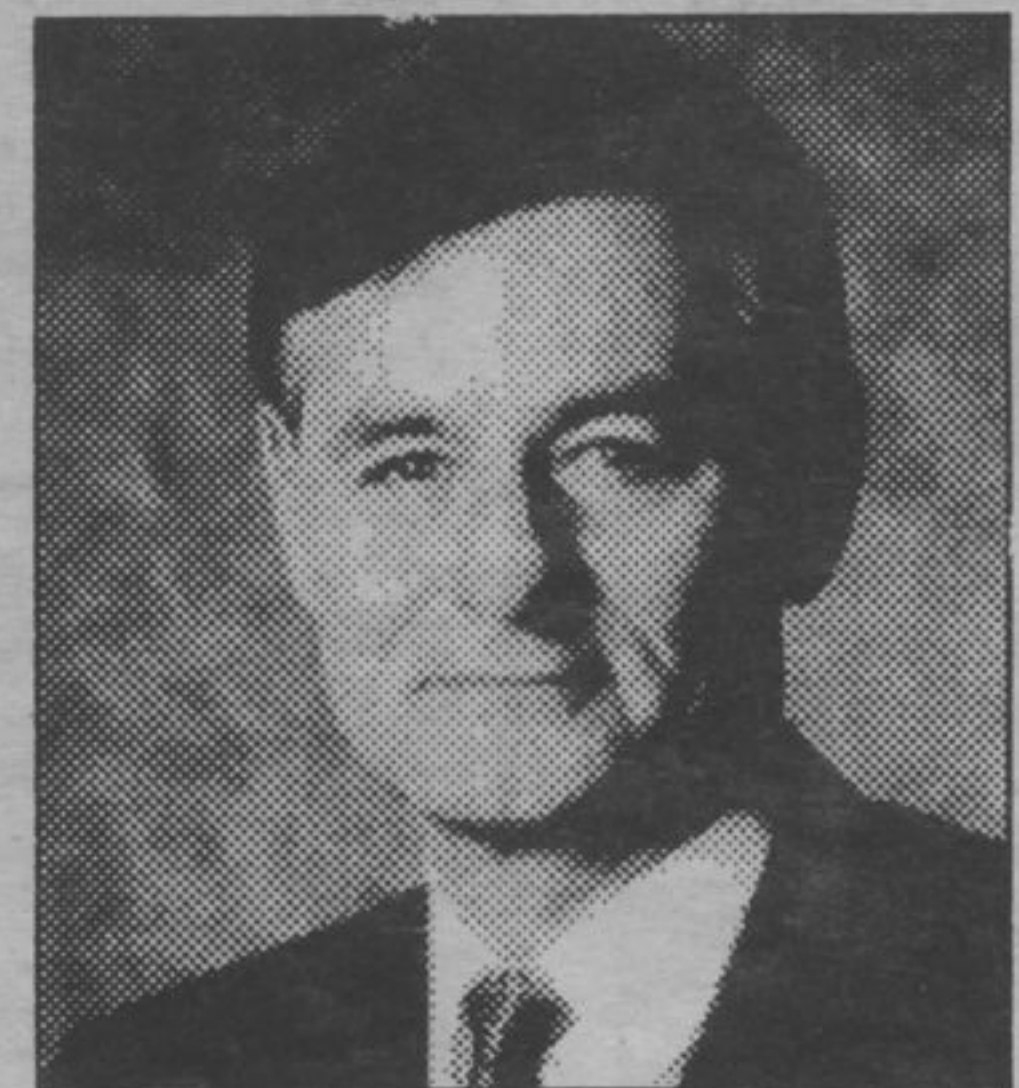
**Hodder's Jewellers**

presents

- bracelets
- 50% off precious moments
- chains
- giftware
- 40% off silver costume jewellery
- crystal charms
- 60% off
- watches
- rings
- 30% off
- earrings

**January 3rd - 19th on selected items only.**  
**Visa & Mastercard accepted.**  
**Simcoe Plaza, Terrace Bay, Marathon Centre Mall**

**AT YOUR SERVICE/ A VOTRE SERVICE**



Gilles Pouliot, MPP Lake Nipigon

**Helping You is My Job!**

CALL TOLL FREE 1-800-268-7192

Monday to Friday during business hours

Gilles Pouliot, Depute provincial, Lac Nipigon  
**Mon Travail, C'est De Vous Aider**

TELEPHONEZ SANS FRAIS: 1-800-268-7192

Du Lundi au Vendredi durant les heures regulaires de travail

FAX # 1-416-963-1568