

Schreiber Recreation Complex news

Christmas Program:

The Schreiber Parks and Recreation Department will be hosting a Children's Christmas Program from December 21 to January 4 inclusive. Brochures have been handed out to the children through the schools. There's no reason for your children to be bored during the holidays as Shannon and Mary have planned some exciting events!

Share the Wealth Family Skating:

The Recreation Committee in conjunction with the Schreiber

Share the Wealth Committee are hosting a Family Skating Party on Friday, December 21 from 7:00 to 9:00 p.m. Bring the entire family to the arena for some fun and excitement.

Winter Carnival

Plans for the 1991 "Peel off Winter" Carnival are well underway. The schedule of events is just about full.

Any groups or individuals who wish to organize an event during the carnival who have not been contacted or has not yet con-

firmed with the Organizing Committee should contact the Recreation Office at 824-2317 as soon as possible.

This years carnival is scheduled for Friday, February 22 to Sunday March 3rd. It will begin with the Opening Ceremonies on Friday and conclude with a bang on Sunday, March 3.

The brochure of the final schedule of events and information will once again be distributed through the mail in early January.

So mark the dates on the Calendar and plan to have the entire family participate in a number of events.

Remember - Don't be a grouch - Get off the couch and enjoy the 1991 "Peel Off Winter" Carnival!

Beard Growing Contest:

In conjunction with the Winter Carnival, again this year we will be holding a Beard - Mustache Growing Contest. There will be a number of categories, and to enter all one has to do is appear at the

Recreation Centre clean shaven anytime between December 20 and January 4. Prizes will be awarded pending the number of entries received. This is the first event held during the carnival - so get involved early!

Aerobics:

The aerobic is now taking it's Christmas Break but will be back in January to help you wear off those extra pounds.

Mon., Jan. 7.:

Mon.-Wed.; 1:30 p.m. - 2:30 p.m.

Sun.-Tues. and Thur.. from 7:30p.m. to 8:30 p.m.

Participants please remember that you must register at the recreation office prior to attending your first class.



THE CORPORATION OF THE TOWNSHIP OF TERRACE BAY

Recreation Centre
Christmas Holiday
Information

Hours of Operation

CHRISTMAS EVE - Dec. 24th - Centre Closed at 4:00 p.m.

CHRISTMAS DAY - Dec. 25th - Closed all day

BOXING DAY - Dec 26th - Arena - Public Skating 1:00-3:00 p.m. Only

Regular Hours - Dec. 27, 28, 29, & 30th

NEW YEAR'S EVE - Dec. 30th - Centre Closed at 4:00 p.m.

NEW YEAR'S DAY - Jan. 1st - Arena - Public Skating 1:00-3:00 p.m. Only

Regular Hours - Commence on January 2nd

PUBLIC SKATING SCHEDULE

Dec. 21st - 1:05 - 2:55 p.m.

7:35 - 8:25 p.m.

22nd - 2:05 - 3:30 p.m.

7:05 - 8:55 p.m.

23rd - 2:05 - 3:30 p.m.

8:05 - 8:55 p.m. (Adults Only)

24th - 11:05 - 11:55 a.m.

1:05 - 3:00 p.m.

26th - 1:00 - 3:00 p.m.

27th - 11:05 - 11:55 a.m.

28th - 1:05 - 2:55 p.m.

7:35 - 8:25 p.m.

29th - 2:05 - 3:30 p.m.

7:05 - 8:55 p.m.

30th - 2:05 - 3:30 p.m.

8:05 - 8:55 p.m. (Adults Only)

31st - 11:05 - 11:55 a.m.

1:00 - 2:55 p.m.

Jan 1st - 1:00 - 3:00 p.m.

Jan. 2nd - Regular Schedule Resumes

Merry Christmas and a Happy New Year from the Terrace Bay Recreation Staff!

NORTH OF SUPERIOR PROGRAMS

December and January office hours for the Schreiber and Terrace Bay offices of the Community Mental Health Program are as follows:

CLOSED FOR THE HOLIDAYS DECEMBER 19/90 - JANUARY 1/91 INCLUSIVE

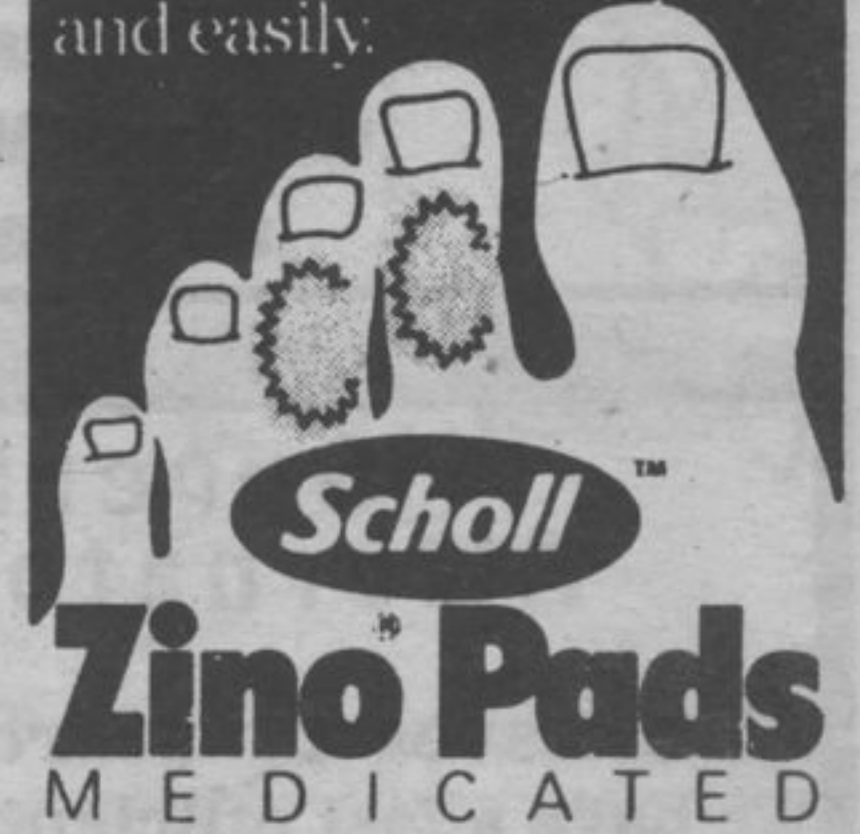
Regular office hours (9:00 a.m. to 4:30 p.m.; Monday through Friday) will resume January 2/91 in our new offices located in Birchwood Terrace (Terrace Bay) and 611 Winnipeg Street (old Avco office, Schreiber)

We'd like to take this opportunity to wish everyone the best of the Season and look forward to serving you in the New Year.

Cathy Collinson
Jan Mah
Madge Richardson

CORNS?

Callouses? Remove them quickly and easily.





Moore's

QUALITY LADIES CLOTHING AND FOOTWEAR

OF TERRACE BAY LTD.

Simcoe Plaza - Terrace Bay










We are open for your convenience
Dec 17 - 21
til 9 p.m.



Perth's

GET READY FOR WINTER

Dec. 17th - Dec. 29th

- Ladies Evening Dresses \$11.60
- Mens & Ladies 2 Pce Suits 6.89
- Comforters & Spreads 7.20

Terrace Bay
Lower Level
THE SEWING NOOK
825-9555

Schreiber
Travel Rest
TRAILER PARK
824-2617