

Aguasabon Golf Club General Meeting

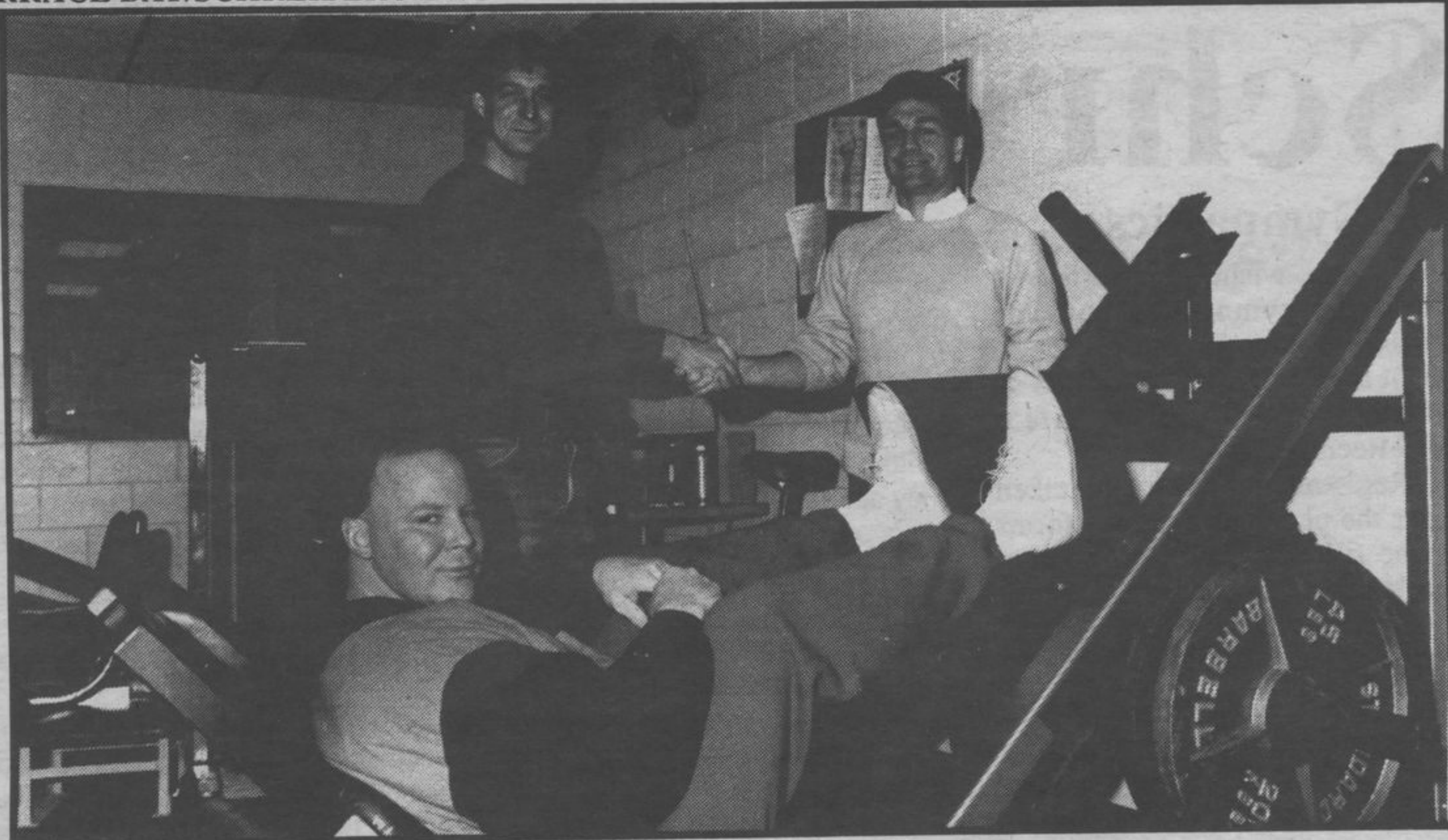
Sunday Nov. 19, 1989

7pm at Rec Centre
Conference Room



Agenda

1. Clubhouse Update
2. Election of Officers for 1990
3. Setting Membership Fees for 1990



The Terrace Bay Recreation Centre's weight room has a new leg press. United Paperworkers International Union Local 665 workers Joey Kostecki and Gordy Phillips made a request to the union to donate money towards the purchase of the leg press. The union agreed and donated \$800 to the township of Terrace Bay. The town in turn applied for a grant from the Ministry of Tourism and Recreation for half the cost of the press. Through the Ministry's Community Development Program Terrace Bay received \$800 and the leg press was purchased. The town will maintain the equipment. Pictured above from left to right are Joey Kostecki, Don Lavigne (representing the union) and Dean Maine.
Photo by Dave Chmara

THE PARTNERS OF Thorne Ernst & Whinney

are pleased to announce that the Canadian practices of Thorne Ernst & Whinney and Peat Marwick have merged and will continue under the name of

KPMG Peat Marwick Thorne

Chartered Accountants

Located at the following addresses

Thunder Bay	Marathon	Sioux Lookout
584 Red River Road P7B 1H3 (807) 345-6571 FAX: (807) 345-0032	52 Peninsula Road P0T 2E0 (807) 229-1448 FAX: (807) 229-0381	39 1/2 King Street P0V 2T0 (807) 737-2746

Choosing a kennel

By Alice Scott

When you plan your vacation you must also decide where your pet will stay, if he is not going with you.

Good boarding kennels are hard to find, and you must research all the possible choices.

First ask your vet where he recommends you take your pet. Also, talk to friends who might have used this particular kennel. Questions you can ask are:

1. What condition their dog was in when they picked him up from the kennel.
2. Did he lose very much weight?
3. Were the kennel owners helpful and courteous?
4. Were the kennels indoor or outdoor and were they clean?
5. Are the dogs kept individually, or together? They should be in separate kennels. Dogs are sensitive when owners are away and may start a fight with another dog.

Always visit the kennels before you place your pet in them. Don't just phone the kennel. By visiting them you can see the kennel at a time when you are not expected.

If you decide to ask a friend to babysit your pet, then you must leave instructions with them on the care of your pet.

Bring your pet's food to your friends and to the kennel if your dog's brand is not offered. Make sure you have an adequate food supply and supply a week extras rations in the event you are delayed.

Leave a phone number where they can contact you in case of an emergency and leave your vet's office and emergency telephone number.

Write down the feeding schedule and leave your pet's medication, such as heartworm pills, vitamins etc., with your boarding kennel or doggy-sitter.

The Lake Superior Board of Education
Invites applications for the position of:

ACCOUNTS PAYABLE CLERK

This is a permanent full-time position, at the Board Office in Marathon. This position has become vacant due to an internal promotion. The successful candidate must have a solid understanding of accounting principles and typing ability. Bilingualism would be a definite asset.

DUTIES, include operation of a computerized general ledger and accounts payable system, processing supplier invoices, preparation of cheques and reconciliation of various accounts.

QUALIFICATIONS: Candidates should possess at least a High School Graduation Diploma. Preference will be given to applicants who have previous bookkeeping experience.

OTHER: Starting salary is \$19,684 per year and a full fringe benefit package is available.

APPLICATIONS, should include a complete summary of education and work experience and at least two references. The deadline for applications is **Friday, November 10th, 1989**. Apply to:

Cathy Tsubouchi, Accountant
Lake Superior Board of Education
P.O. Bag "A"
Marathon, Ontario
P0T 2E0
(807) 229-0436

P. Richardson,
Chairman

D.I. McQuarrie,
Director of Education

STEVE DAFOE Chartered Financial Planner

Financial Planning, GICs, Estate & Retirement Planning
Personal & Business Life Insurance, Disability Income Protection
RRSPs, Annuities, RRIIFs, Employee Benefits, Investment Funds*

I.B.M. Bldg., 200 S. Syndicate Ave.
Thunder Bay, Ontario P7E 1C9
Bus. 1-623-1521 Res. 1-344-6403



The Mutual Group

Facing Tomorrow
Together

Licensed with Mutual Life of Canada/
Mutual Investco Inc., two of the Mutual Group.

MURRAY & COURTIS

Barristers and Solicitors

Ross W. Murray, B.Comm., M.B.A., LL.B.
Richard W. Courtis, B.A., M.A., LL.B.
Randall V. Johns, H.B. Comm., LL.B., C.A.
Marlene Wilson, B.A., LL.B.

TERRACE BAY OFFICE THUNDER BAY OFFICE

7 Simcoe Plaza
(Lower Level)
Terrace Bay, Ont. P0T 2W0
Telephone (807) 825-9379
(807) 825-9395
Facsimile (807) 825-9506

Suite 410
The Chapple Building
101 N. Syndicate Ave.
Thunder Bay, Ont. P7C 3V4
Telephone (807) 623-7961
Facsimile (807) 623-4417

TERRACE BAY OFFICE HOURS:
Monday to Friday 9:00 a.m. to 5:00 p.m.