

Terrace Bay - Schreiber

NEWS

Terrace Bay Public Library
Box 369
Terrace Bay Ont
P0T 2W0
11/1/11 C

Vol. 43, No. 17

April 26, 1989

40 cents

Merits of economic development

By Dave Chmara

The need for economic development was stressed at a meeting held in Schreiber last week.

Bob Axford with the PS Consulting group, Doug Melville with the Ministry of Northern Development and Mines and Paul Watts with the Northern Studies program working out of Lakehead University in Thunder Bay were on hand to outline the benefits and need for an Economic Development Organization.

Local businessman Mike Moore chaired the meeting which

saw two businessmen from Schreiber, six from Terrace Bay, Reeves Jim Ziegler and Mike Cosgrove, and councillors John St. Amand and Ed Borutski attend the meeting.

Moore began the meeting by saying, "we're here to decide if we want to organize and develop an Economic Development Organization."

Axford echoed Moore's comment by adding "The first reason we're here is because we care and also many of us are business people and economic issues hit us in the pocket book."

Axford conducted a short slide show which showed rural areas are shrinking in both population and economic activity. He also pointed out that Northern Ontario statistically has higher unemployment compared with Ontario and Canada.

He said communities can turn to politicians, companies and a number of government programs to help increase economic activity.

He also pointed out the significant growth of jobs in the service sector (up by 50 per cent between 1971 and 1986) and the decrease

in jobs in the primary service sector (i.e. forestry, mining) over the past 40 years.

In 1946, primary sector jobs made up 1/3 of the work force while in 1986 they only made up roughly 10 per cent of the work force.

Axford noted the service sector depends on the wealth generated by primary industry.

"You're fortunate because you have a good primary industry in the area," Axford said.

He said wealth and job creation is needed for a healthy economy.

Axford noted the three essential ingredients needed for economic development: vision, collaboration and a spark to keep things going.

Melville said, "an Economic Development Committee is the tool to help create economic development."

He added it can be made up of appointed members, politicians, business people. "It's up to the community to decide how to set it up."

"The Ministry (of Northern Development and Mines) has funding to create economic strategies. The strategy is a local view on current and future plans," Melville said.

He said under the MEDA program (municipal economic development agency) a minimum population base of between 4,000 to 30,000 is required.

This means Terrace Bay and Schreiber would have to form a joint economic development organization to receive full funding under MEDA. Funding is \$100,000 every year for five years with 25 per cent of that coming from the municipality.

A feasibility study for an economic development organization would be required before funding from MEDA was granted.

Axford said, "there's not a shortage of money or opportunity in this area (for economic development) but there is a shortage of entrepreneurs."

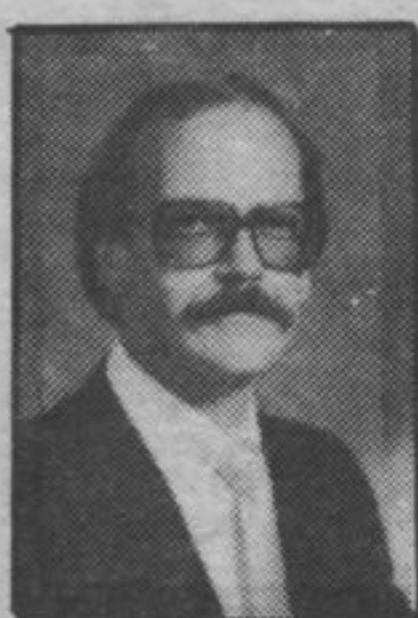
He added, "These towns are not short of money. There's lots of money here but it heads down the road to you know where every Friday afternoon."

Several of those in attendance made light of the fact CP, the mine and KC won't be here forever and economic development must be planned out well in advance of any lay offs or shut downs.

Reeves Ziegler and Cosgrove said the two councils would meet to discuss further the possibility of attempting to form an Economic Development Organization and to decide how the organization would be made up.



Spring has to be here when the beach starts to come alive with residents taking a walk Sunday afternoons and children start fishing. Above, Kevin and Kelly Maenpaa and Nathan Notwell try their luck. Photo by Dave Chmara



Belluz
Realty Ltd.
Simcoe Plaza
Terrace Bay, Ont
P0T 2W0
Juris Zdanovskis
Broker
1-807-824-2933
1-807-825-9393

INSIDE THIS WEEK

Transfer Facility

CP answers questions about Schreiber site

Page 2

Fishing Regulations

Catch and possession limits are changing

Page 6

Grand Opening

Futures office officially opens

Page 7

HOUSE INSURANCE

REPLACEMENT COST CONTENTS

Have you got it?

Call Superior-Shoreline Ins. Ltd.
825-9492 825-9646