

# MNR proposes expanded services for Rainbow Falls Provincial Park

By Greg Huneault  
the News

Past studies have determined that Rainbow Falls Provincial Park is an important contributor to the local tourism industry. It also serves as an important recreational facility for area residents.

Based on these findings as well as proposed objectives, Ministry of Natural Resources (MNR) officials have developed a Preliminary Management Plan for the local park. If the Plan is implemented, MNR officials hope to capitalize on existing resources and attractions within the park and develop complementary features.

Located between Schreiber and Rosspport, Rainbow Falls Provincial Park is a 576 hectare piece of scenic land established in 1960 to serve the recreational and tourism needs of local residents and visi-

## Local resources are available for victims of family violence

There is a plaque on a wall of the Family Resource Centre which reads: "This house is established for the dignity of women."

In 1982 a group concerned with women's issues undertook a study of the extent of wife abuse and family violence along the North Shore.

Their statistics corresponded with the national statistics of wife abuse, which indicate that as many as one in ten women had experienced abuse at some time in their lives.

The group also learned that few resources were available to victims of family violence in communities along the North Shore, which led to the realization that a safe shelter was needed for these victims.

In 1983, support was sought from the councils of Marathon, Manitouwadge, Terrace Bay, and Schreiber to establish a safe shelter and counselling staff for battered women.

In the fall of that year, the four communities formed a steering committee to develop a program that would best serve the victims of family violence. With the support and guidance from the Ministry of Community and Social Services, a plan was formulated to provide a centrally located facility which would accommodate women and their children from the four communi-

tors.

Classified as a 'recreational park' — one of six such designations applied by the MNR's Provincial Parks System — Rainbow's purpose is "to support a wide variety of outdoor recreation opportunities for large numbers of people in attractive surroundings," the study noted.

Of the four objectives of the Provincial Parks System, three will be considered for Rainbow Falls Park. Recreation, heritage appreciation, and tourism are the three goals. The fourth, defined as protection, is not considered to be a factor.

The Management Plan is intended to be a guideline for development and regular operation of the park for a 20-year period.

Among the proposed improvements, the Plan discusses:

See "No" on page 9

ties as well as the unorganized area of Rosspport and the native communities of Mobert, Heron Bay and Pays Plat.

In Oct., 1985, a Board of Directors was comprised of two representatives of each community. Beginning the following month, construction of the Family Resource Centre began with money received from the Ministry of Community and Social Services. It began operating on May 30, 1986.

The Centre can accommodate up to ten residents. There are six bedrooms, four bathrooms, a fully equipped kitchen as well as a playroom and a large fenced-in yard with playground equipment for the children.

The purpose of the Centre is to provide a temporary safe shelter for women and their children who are victims of family violence.

While the women are in the house, they are provided with food, clothing, counselling, contacts with outside agencies and friendship.

In addition to the Centre providing a 24-hour service, there are two outreach workers based in Schreiber and Manitouwadge to provide crisis response and follow-up.

For further information, call 229-2222 or the toll-free number 1-800-465-3307.

# Terrace Bay - Schreiber News

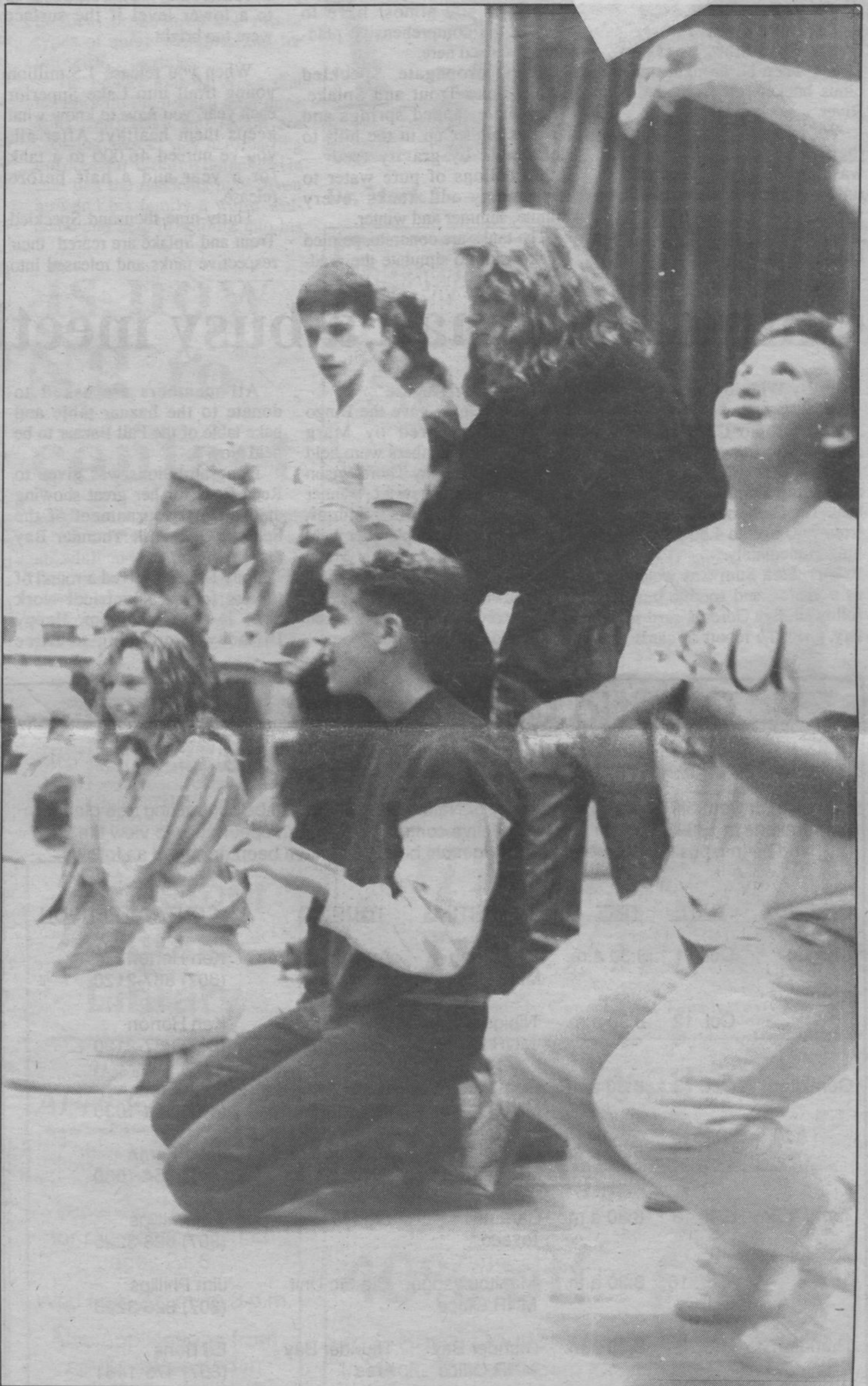
Vol. 43, No. 38

Sept 28, 1988

40 cents

Public Library  
Terrace Bay Ont  
POT 2W0

11/11/11 C



## It was a dog day on the funny farm

Students of the local highschool celebrated a new school year in a show called The Funny Farm.

Grade 9 pupils had to do as they were told, even if it meant acting like a dog as above.



**Belluz Realty Ltd.**  
Simcoe Plaza  
Terrace Bay, Ont  
POT 2W0  
**LYNN HODDER**  
Sales Person  
Office 825-9393  
Home 824-3429

### INSIDE THIS WEEK

#### New Doctor

Doctor Mark Fowler and his family settle in

Page 3

#### Volleyball School

Senior Boys team has tradition to uphold

Page 7

#### Rosspport addition

Residents weren't sure just what it was at the dock

Page 9

**SUPERIOR SHORELINE INSURANCE LTD.**  
The Northshore Insurance Specialists!

Gord Moorey  
825-9495  
825-9646

