



**BELLUZ**  
Realty Ltd.  
Simcoe Plaza  
Box 715  
Terrace Bay  
Ontario  
POT-2WO

Juris Zdanovskis  
Broker

1-807-824-2933

**SUPERIOR**  
SHORELINE  
INSURANCE  
LTD.



Gord Moorey

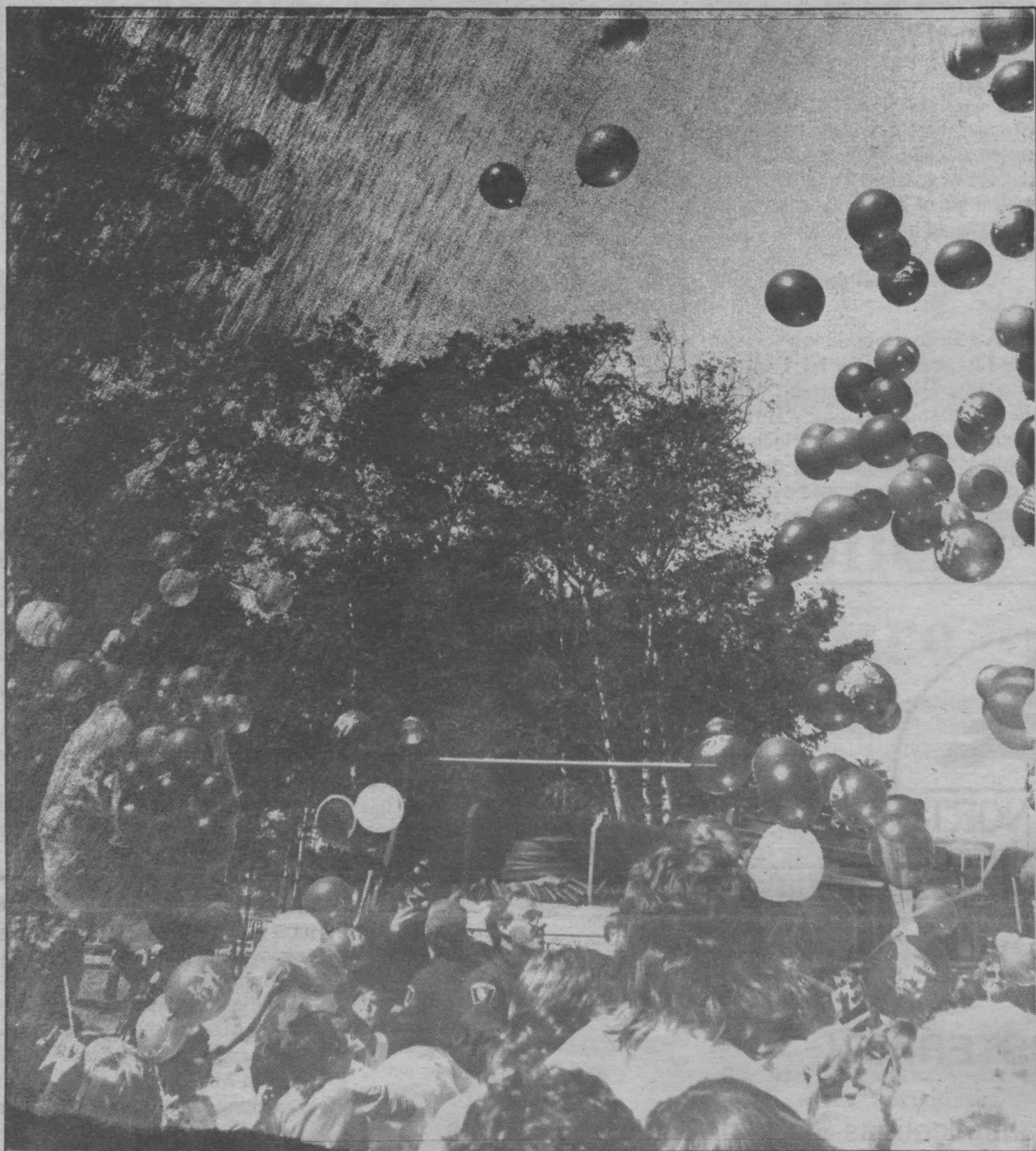
825-9492  
825-9646

The North Shore Insurance  
Specialists!

Vol. 43, No. 28

Wednesday, July 13, 1988

40 cents



Celebrating with balloons: Things were under control, but the balloons got carried away during Canada Day celebrations in Terrace Bay. photo by Paul Marcon

## Local program asks feds for half million

The six-month Initial Phase of the The Schreiber/Terrace Bay Community Futures Program has been successfully completed. The Initial Phase began in January when Coordinator Leslie Dickson and Administrative Assistant Donna Richardson opened the local office.

The objective of the Initial Phase was to research the local economies of Terrace Bay, Schreiber, Rossport and Pays Plat to determine the economic needs of this area and to assess whether the Community Futures Program could address the indicated needs.

To accomplish this task, the staff compiled statistical data, interviewed almost all of the small business people, distributed questionnaires to all recipients of social assistance and unemployment insurance benefits and contacted all major employers in this area.

Based on the result of this study, the committee developed a strategy for development and diversification of the economy.

The Initial Phase ended with the

development of a final report, which included the results of the economic study and research. It also included the committee's five-year proposal to help increase employment by encouraging new business and industry to diversify the economy. A request for funding from Canada Employment and Immigration for the five-year operational phase was included also.

If the budget submission is approved, the following services will become available in this area:

— A Business Development Centre to assist existing business and encourage new businesses by providing technical advisory services and by offering business loans.

— Self-employment incentive to provide financial assistance to recipients of Unemployment insurance benefits and welfare for up to 52 weeks while they begin a self-employment (small business) venture.

— Training option to provide

business training for the self-employment incentive clients and to provide a Food Preparation course to train cooks in this area.

— The Community Futures Committee itself will continue to assess the needs in this area and will ensure that a tourism strategy is put in place.

— The Community Initiatives Fund is a special option under the Community Futures Program. The purpose of it is to support innovative initiatives which clearly show evidence that they would increase the long term level of employment in the community and satisfy the objectives of the Community Futures Committee.

To date, no proposals to access the Community Initiatives Fund have been received for the committee's consideration. However, The committee can apply to the minister of Canada Employment and Immigration at any time should a viable proposal be presented to the committee.

The committee has requested

## Greenpeace tour stops at Terrace Bay

*Heated debate focuses concerns*

By Greg Huneault  
the News

The two Greenpeace speakers who hosted a public forum at the Terrace Bay Legion on Monday, July 4 occasionally made more waves than the ship in which they are travelling while on their Great Lakes Campaign Tour.

About 22 people attended the public meeting to listen to and to discuss Greenpeace concerns of toxic pollutants created generally by pulp and paper mills and specifically by the Kimberly-Clark mill in Terrace Bay.

Joyce McLean, Greenpeace Great Lakes Campaign Coordinator, and Renate Kroesa, technical specialist, discussed Greenpeace's goals and aims during this particular project. They were not welcome with open arms by some in the crowd.

**Four Greenpeace members  
arrested for trespassing.  
See story on page 2**

Emotional and heated exchanges occasionally stalled the meeting as one local resident in the crowd stated that past Greenpeace campaigns in Newfoundland had resulted in a loss of jobs for local residents.

"I don't think you have any right to bring your ship up here," said the irate Terrace Bay citizen. He asked the two Greenpeace employees if they had any "gainful employment" and asked the two why they don't "go back to Toronto" and look after pollution concerns there firstly before coming to Terrace Bay.

McLean, who was a working journalist before joining Greenpeace, told the group that Greenpeace wanted to talk directly to residents. She noted, "We are not

purposefully hanging banners or plugging up sewers," as the irate speaker in the crowd had accused them of doing on a previous visit to Terrace Bay.

"We know the feelings run quite high in Terrace Bay against Greenpeace," said McLean.

"I know to some, Greenpeace is synonymous with a loss of jobs," she conceded in response to the speaker's concern of job losses when Greenpeace focuses on a town's industry. "But quite frankly, sir, I think you're giving Greenpeace more credit than it deserves," she added.

The Great Lakes Campaign was launched on May 5, 1988, as the Greenpeace ship Beluga left Montreal on a voyage of consumer education, industrial and political pressure and 'direct action demonstrations.' The campaign will see the laboratory-equipped ship travel along the northshore of Lake Superior and down the Mississippi River, while taking water supplies and speaking with the public and politicians.

The discussion in Terrace Bay focused on the toxic compounds found in pulp and paper mill effluent, particularly organochlorine compounds and dioxin. These chemical compounds are man-made, explained Kroesa, and quite simply "nature does not know how to break them down."

The two displayed paper products they said contain toxins that result from the present process used in most North American pulp and paper mills. According to Kroesa, items such as diapers, tissue paper, sanitary napkins and coffee filters that have been bleached white contain residual compounds of the mill process and are potentially harmful.

Kroesa explained that leading European and Japanese pulp and paper producers have been using a

See "Greenpeace" on page 3



Greenpeace spokespersons Renate Kroesa (left) and Joyce McLean spoke in Terrace Bay. photo by Greg Huneault