



BELLUZ Realty Ltd.
 Simcoe Plaza
 Box 715
 Terrace Bay
 Ontario
 POT-2WO

Juris Zdanovskis
 Broker

1-807-824-2933

TERRACE BAY — SCHREIBER

New

Public Library
 TERRACE BAY, ONT.
 POT 2WO
 CCTFN

SUPERIOR SHORELINE INSURANCE LTD.



Gord Moorey

825-9492
 825-9646

The North Shore Insurance Specialists!

Vol. 43, No 20

Wednesday, May 18, 1988

40 cents

manhunt ends peacefully

Police capture kidnapping suspect in area

By Greg Huneault
 the News

Police arrested a man Sunday morning in the bush east of Terrace Bay after they followed a trail of offenses the individual allegedly committed, including tying up members of a Schreiber family and stealing the family's pick up truck.

Schreiber OPP said the driver of a vehicle was signalled to stop on Saturday, May 14 for an apparent seat belt infraction, while driving on the Trans-Canada Highway. However, he fled the cruiser and initiated a high-speed chase from an area near Rossport to Walker's Lake turnoff.

Officials said the car chase ended when the speeding automobile blew out a tire, and the driver jumped out of the car. Police allege that the individual ran down Walker's Lake Road and was seen fleeing into the woods with a rifle.

Local police had the area contained by about 8.15 am, and notified special OPP units of the situation. Two Tactical Rescue Unit (TRU) Teams were called into service and left their respective bases in Barrie and London.

Two canine units were also called in to assist with the search. One arrived from Sault Ste. Marie and the other from the South Porcupine detachment. Along with these ground search units, an OPP search helicopter arrived from Toronto to provide air surveillance.

The 14 members of the TRU team arrived at Terrace Bay Airport at approximately 6.05 pm Saturday and joined in the search.

During the search, OPP personnel from Longlac, Geraldton, Schreiber, Marathon, Nipigon and officers from the Terrace Bay Police Force were involved in the operation. It is estimated that between 35 and 40 police personnel were involved in the operation.

Police set up road blocks west and east of Schreiber and checked every vehicle passing through. They also continued to check on alleged sightings of the individual, while searching in the bush by Schreiber.

Officials say that at approximately 6.00 am Sunday, May 15, the suspect entered a residence in Schreiber and tied up four members of a family. Police spokesmen said the two parents and two children were not unduly terrorized or assaulted.

The suspect then stole the family's pick up truck after having been in the residence for approximately an hour.

The mother of the family was

tacted police at approximately 7.10 am. The suspect fled west of Schreiber in the pick up, but was faced with a road block set up by the Aquasabon bridge just west of Terrace Bay.

OPP spokesmen said the individual broke through the road block and proceeded on a side road where he eventually fled on foot. The abandoned pick up was spotted by the OPP helicopter, and a search was started in the immediate area.

The search ended when the suspect was found by a dog in the canine unit. The 25-year-old suspect of no fixed address was taken into custody at approximately 8.00 am on Sunday.

Police told the News the individual is wanted for questioning in connection with a kidnapping in Winnipeg, Manitoba.

The suspect has been charged with unlawful confinement, weapons-related charges, and other charges are pending. Police are not releasing the name of the family allegedly bound and confined by the suspect. Constable Bob Draper of the Schreiber OPP detachment has been assigned to complete the investigation.

Investigation of local drowning tragedy over

By Greg Huneault
 the News

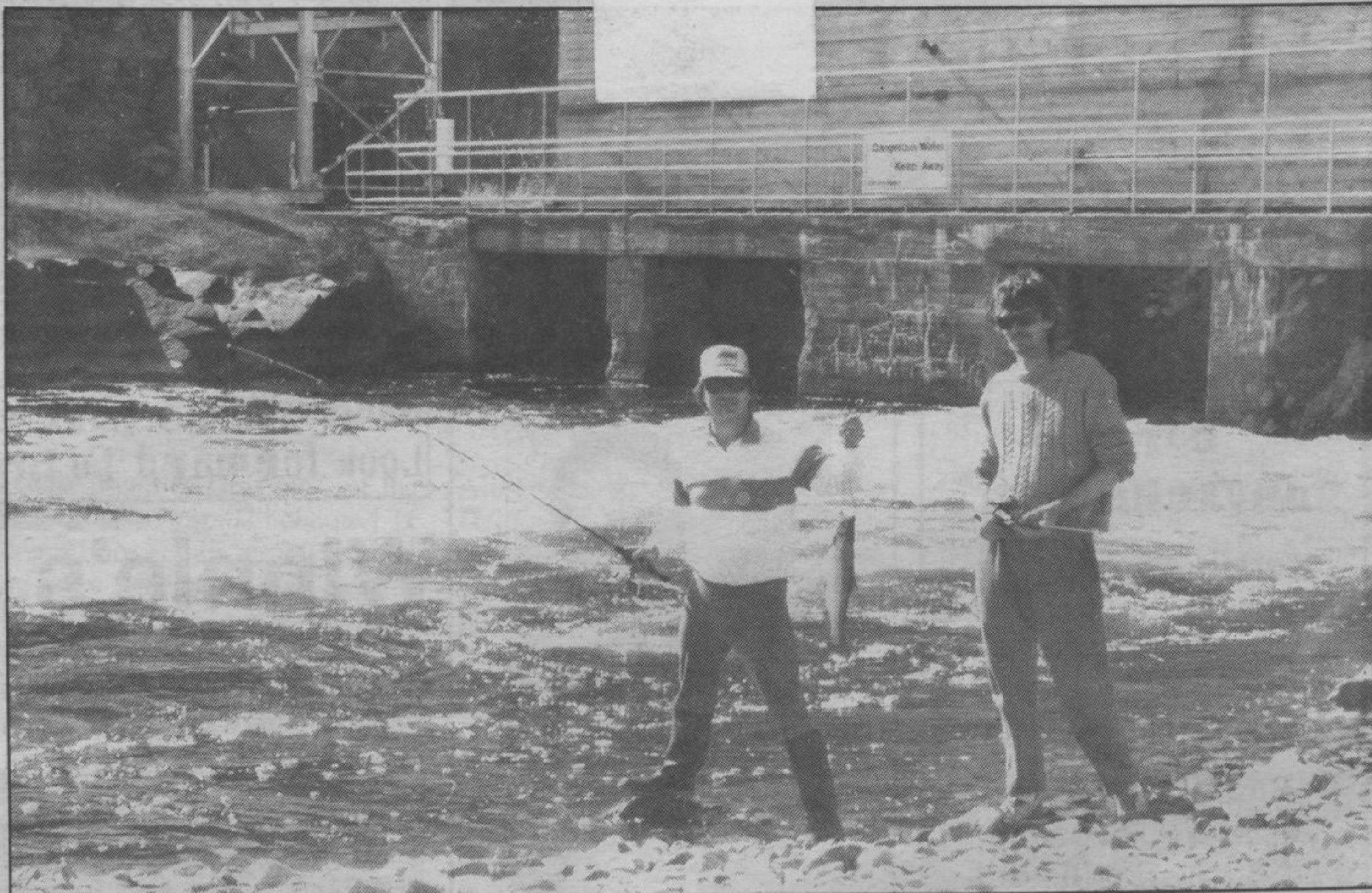
Police have concluded their investigation into the drowning last weekend of three area men, which occurred east of the Steele River.

The tragedy happened sometime between May 6 and 8 when the three friends went for a canoe ride by the Steele River on Friday evening, May 6.

Const. Bob Draper, the investigating officer with the Schreiber OPP detachment, said the three individuals were expected back on shore at around 11.00 pm Friday, but failed to return.

Terrace Bay police were informed of the situation by friends of the victims and the OPP were called at approximately 8.15 am on Saturday, May 7 to assist in the search.

Because it is in their jurisdiction, OPP assumed responsibility



Fish..? This is bait!:Mark McCann (left) and Sean Terry went to the Hydro Dam in Terrace Bay last week after they heard there were fish in Lake Superior.

Actually, Sean is from Schreiber and Mark is originally from Terrace Bay, so they should know their fishing. Mark said they caught this Speckled trout soon after they arrived.

K-C woodworkers on strike for job security

By Greg Huneault
 the News

Between 600 and 700 members of the International Woodworkers of America Union set up picket

lines in four Northern communities last week in a bid to ensure job security.

Members of Local 2693 of the IWA went on strike in Longlac, Nakina, Geraldton and Terrace Bay after representatives of each party failed to reach an agreement.

About 15 of the 45 union members from the Terrace Bay and Schreiber area have manned a picket line on Mill Road since May 9, and have maintained it 24 hours a day.

Union spokesmen Dan Puddester and Lynn Merkaw say the main issue of disagreement revolves around the number of jobs the union wants guaranteed.

"We know there's going to be layoffs," said Puddester. "We know we're going to lose jobs, but if we have a per centage(of work guaranteed) we know there's going to be something left."

The per centage Puddester refers to is the number of jobs that will be given to owners/operators, as opposed to the unionized employees.

He said Spruce Falls recently signed an agreement offering an 85-15 split; that is 85 per cent would be cut by their own employees and 15 per cent would be purchased from individual owners and operators. Likewise, said Puddester, Great Lakes Forest Products signed a contract offering an approximate 69-31 split, whereby the company would purchase 31 per cent of its fibre products from private sources.

The two said this one issue is the only disagreement holding back a settlement. The two concede that

made some jobs unnecessary, and that the owner/operator question has been a cause of debate.

"Owner/operators have been a tough issue for the union to accept," said Puddester, but added that the union accepted the company's demands for an increase in the number of them. "It's something we never allowed before, and it's something we allowed now," he told the News.

Puddester said the union accepted wage concessions by agreeing to a 1, 1.5, and 4.5 per cent increase over a three-year contract. The union has been without a contract now since August 31, 1987.

The local members of the union have also established a picket line by the railway entering Kimberly-Clark property. Puddester told the News that employees of CP Rail refused to cross the picket lines as a sign of support, and he said staff are now operating the trains. He explained that the picketline was set up by the railway "to stop wood from going to the mill."

As the strike enters its second week, there have been no reported incidents or problems.

Terrace Bay Police Chief Donald Kidder said a police cruiser has been stationed across from the picket line simply to ensure that police can respond to problems caused by any group or individual.

"There have been no occurrences requiring police attention," said Chief Kidder. "The police will continue to observe the situation and act accordingly," he told the News.

"We have to live in this town," said Puddester. "Our inten-