

# Schreiber Recreation Department

## Mixed Volleyball

The recreation department has, as of Jan. 14, not received enough names to organize this event.

We will keep trying to get a mixed volleyball league started. Anyone interested in playing recreational volleyball one night per week should contact the recreation office at 824-2317.

## National Coaching Certification Level 1- Theory Coaching Clinic

The Schreiber Recreation Department will be sponsoring a Level 1 Theory Coaching Clinic from January 22 to the 24th, 1988.

The N.C.C.P. is the 'coaching of coaches' program. It is an educational learning program open to all coaches and is designed to make the reward of coaching that much better.

The more the coaches get out of coaching the more their athletes will get out of their sport.

If you wish to register please contact the office at 2317.

**Teen & Children's Aerobics-** Debbie Tremblay, one of our aerobic instructors, is presently explaining the possibility of organizing a teen and children's aerobics program. If you are interested, contact Debbie at 824-2026 or the recreation office at 2317.

**Computer Course**  
This course will not begin on January 13, 1988. It will begin on Wednesday, January 27 at 7 p.m. at the high school, The recreation office is still taking registration.

**Tae Kwon Do**  
Due to the great response of this program, Joe has agreed to run a club out of Schreiber.

Instruction will be held each Tuesday and Wednesday from 8-9 p.m. at the rec complex until the end of July 1988.

This is a very exciting sport and is open to anyone ages 10 and up. To register please come to the centre on Tuesday, January 5, at 8 p.m. or come the complex on Tuesday or Wednesday evening to talk to Joe.

**First Aid Course**  
The recreation department has been approached to organize a First Aid Course. Anyone interested in taking this course should contact the office at 2317.

## Learn to skate

The recreation department will run a second Learn to Skate session under the instruction of Anne Miller. Classes are on Monday and Thursdays from 10-11 a.m. and from 1:30-2:30 p.m. and is open to all ages.

This session concludes on Thursday, February 25. To register or for more information contact the office at 824-2317.

**Teen Drop In Centre**  
There is now a Teen Drop In Centre operating out of the games room and meeting room 3. If you are looking for a place to just meet your friends to sit and talk, come out to the recreation centre on Friday and Saturday nights from 7-11 p.m.

**Community Calendar**  
The calendar will assist in keeping the community better-informed of local happenings as well as helping our new residents in familiarizing themselves with the community.

This column includes the name of the group contact person, date, place and time of their meetings as well as any special events they are planning. Any groups wishing to have their meetings or special events published on a regular basis should contact the recreation office at

824-2317.

If you would like to offer suggestions for future programs or have a skill or hobby you would like share with others please contact the office and we will do our best to organize it.

**Winter Events Calendar**  
The 1987-88 Winter Special Events Calendar is now ready.

For your copy stop by the office anytime between 9 a.m. and 5 p.m.

## Future Programs

If you have a desire to participate in a specific program or wish to conduct a craft or hobby course, please contact the recreation office at 824-2317.

**Buying or selling? Check the Classifieds call today 825-3747**

## The Northwestern Ontario Women's Health Information Network

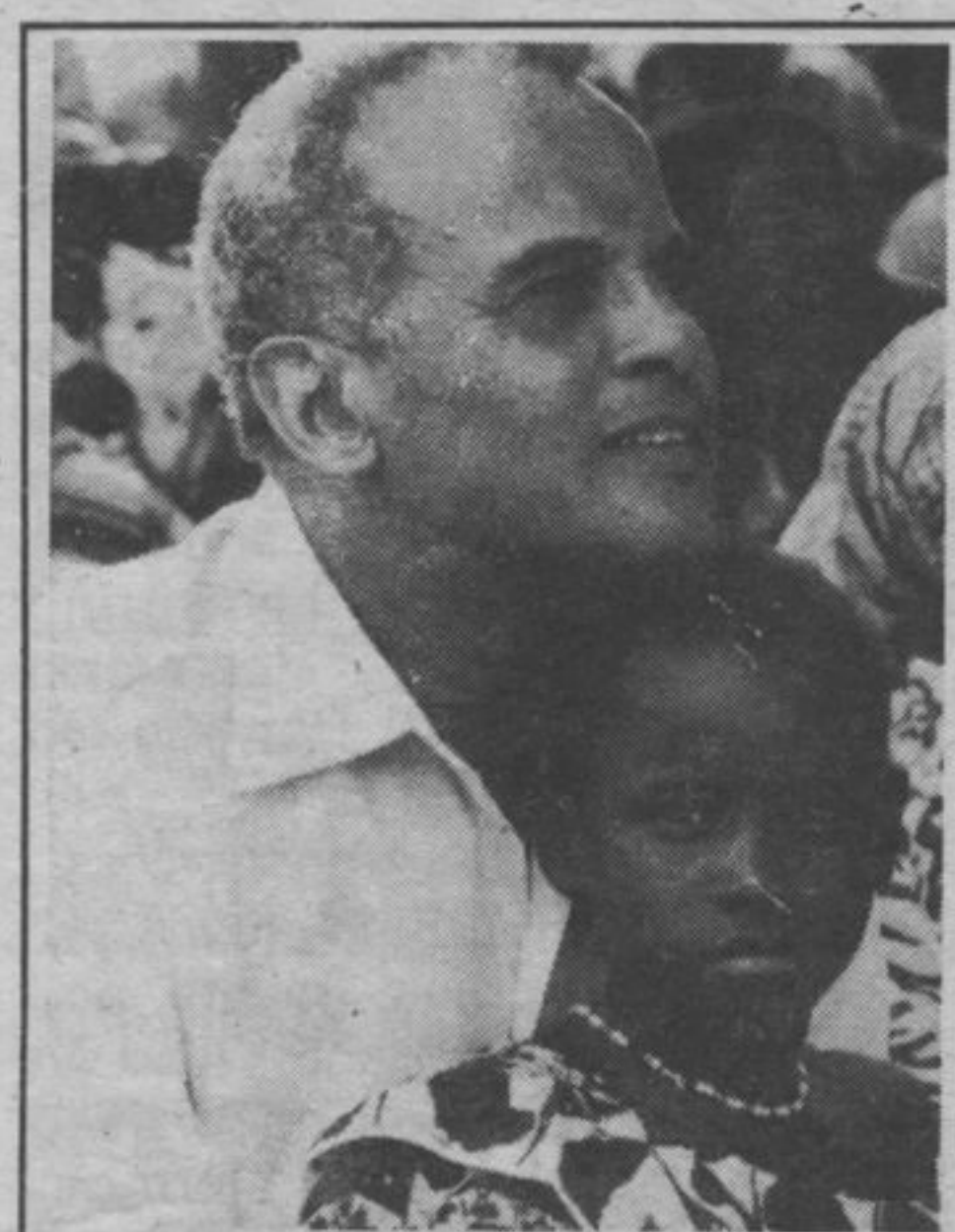
presents  
their

**2nd ANNUAL HEALTH CONFERENCE  
HEALTHY HORIZONS II**  
in conjunction with their HEALTH FAIR  
January 29, 30, 31, 1988  
Ramada Inn, Thunder Bay, Ontario

### Workshops on:

Healthy Aging  
VDT'S: New Office Techniques  
Endometriosis  
Infertility & Reproductive Technology  
Menopause  
Midwifery:  
Reganing Control

For more information on registration, please call Rennie Martin at (807) 345-1410.



- Harry Belafonte  
UNICEF Goodwill Ambassador

**"UNICEF cards  
save lives.  
Send UNICEF cards  
and gifts."**



Contact:  
UNICEF Ontario 333 Eglinton Ave. East  
Toronto, Ontario, M4P 1L7 Telephone (416) 487-4153  
OR call toll-free 1-800-268-6364 (Operator 509)

## Greetings from B.C.

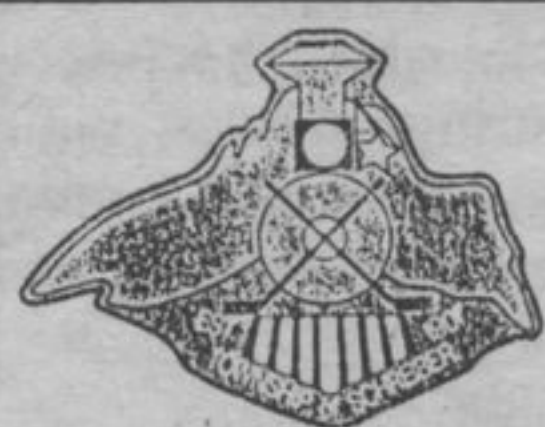
We would like to wish a very Merry Christmas and a Happy New Year to all the cottagers of upper White Sand Lake.  
**Angus and Violet Drexler**  
Parksville, B.C.

N.B. The News apologizes for inadvertently leaving it out of the Christmas Edition.

## NOTICE

TO SKI-DOOERS AND PARENTS  
OF SKI-DOOERS:

The property known as ML-196-E bordering the south side of Schreiber where the Graham home is located is **PRIVATE PROPERTY**. Due to damage to out buildings, theft of property, and littering, we ask that you do not cut through this property when ski-dooing or pursuing other winter recreation. This includes the road which goes to the cement block building. You can reach the hydro line by hydro installation and using the road outside the property through to the "old dump".  
Althea & Ted Graham.



## FOR SALE BY TENDER

### SURPLUS STREETLIGHTS

The Township of Schreiber has for sale, by tender, the following:

10 incandescent type, mogul base, street lights  
4 exterior fluorescent type lights

These fixtures will be sold to the highest bidder on an "as is; where is" basis. Tenderers may bid for the lights either individually or as a lot; the awarding of sale will be at the discretion of the Council of the Township of Schreiber.

Persons wishing to examine the fixtures and obtain the tender form may do so by contacting the  
Township of Schreiber,  
608 Winnipeg St.,  
Schreiber, Ontario  
824-2711.

Tender Closing Time and Date: 5:00 p.m. Tuesday, 9th February 1988.

## Obituary McBride

**Mr. Clarence (Casey) McBride**, age 57 years of Schreiber, passed away unexpectedly at home on Tuesday January 19, 1988. Born in Schreiber on December 18, 1930, he was the son of Fleurette Mc Bride and the late Russell McBride. He started work at age 16 for C.P.R. in the car department & started firing in 1950 and promoted to engineer in 1953. He was a member of the Fort William Prosvita Society. He married Lil MacLeod in 1964. Predeceased by his father in 1963 & a sister Toots in 1973.

Survived by his wife Lil, daughters Judy of Thunder Bay, Christina Davidson of Spencerville, Ontario, sons David of Ottawa, & Bruce of Schreiber. & grandchildren Morgan & Autumn Davidson, Dallas & Andrea MacLeod & Jessica MacLeod. Brothers Lorne of Terrace Bay, sisters Toady Hass of Hamilton, Mima Duggan & Babe Spikula of Schreiber. Also Aunts and numerous nieces and nephews. Funeral mass was held on Friday January 22, at 11 a.m. from Holy Angels Roman Catholic Church. Cremation followed. If friends so desire, memorials to the charity of their choice would be appreciated.

## NOTICE



## SCHREIBER HYDRO CUSTOMERS

The Hydro Electric Commission of the Township of Schreiber has made application to Ontario Hydro, and will implement the approved Schedule of Rates and Charges

### Effective Dates

**Energy**- February 1, 1988 for all monthly bills issued on or after that date and March 1, 1988 for all bi-monthly issued on or after that date.  
**Equipment Rentals**- February 1, 1988 for all monthly bills issued on or after that date.  
**Miscellaneous Charges**- February 1, 1988 for all charges incurred by customers on or after

### MONTHLY RATES AND CHARGES

#### Residential Service

First 250 KW'h @ 9.35 cents  
All additional KW'h @ 5.25 cents  
Minimum Bill \$ 5.75

Street Lighting  
\$ 18.56 per kilowatt of connected load

Sentinel Lighting  
(unmetered energy)  
\$ 20.42

#### General Service

Billing Demand  
First 50 KW @ No charge  
Balance KW@ \$ 4.30 per KW

Energy Charges  
First 250 KW.h @ 9.35 per KW.h  
Next 12,250 KW.h @ 5.68 per KW.h  
All additional KW.h @ 3.96 per KW.h  
General Minimum Bill \$ 5.75

Equipment Rentals  
Sentinel Lights- 400 watt - \$3.20

#### Miscellaneous charges

Late payment .5%  
N.S.F. cheques \$ 5.50 plus actual bank charges  
Reconnections \$ 5.50