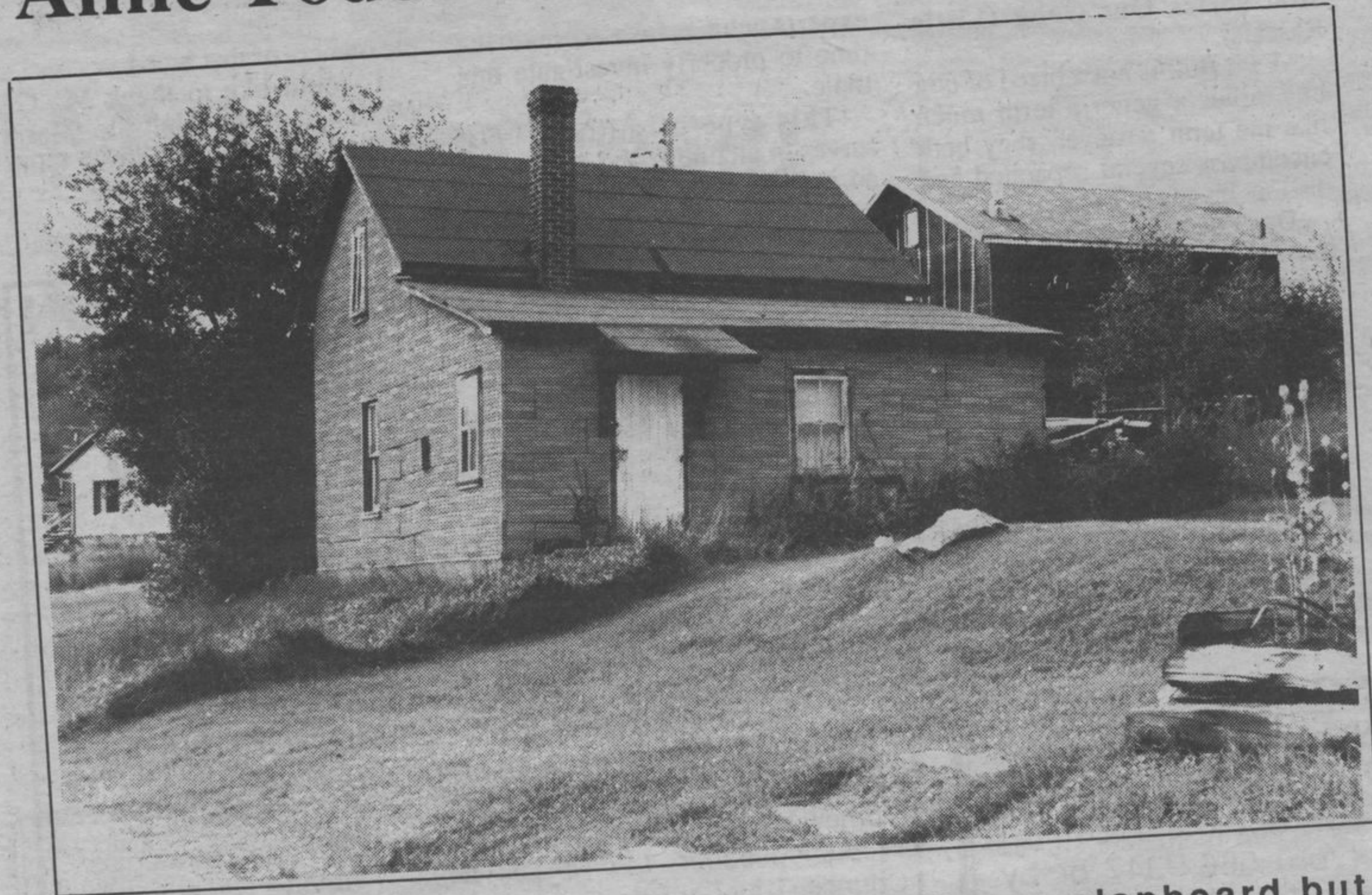


Anne Todesco looks at old buildings in Rosspport area



This house was originally a log cabin. It was clapboard but is now covered. It was built in 1881.

continued from page 2

of it and built a larger general store. (More pictures of homes in Rosspport in the next issue).

Comings and goings at Rosspport

Mr. and Mrs. Nick Bain and daughter Melissa are on holidays on St. Joe's Island near the Sault with the Lionel Hubelits.

Mrs. Cecilia Somers RN., has left for Espanola after visiting her sister Mrs. Anne Todesco.

The Don Tychoniak family is holidaying on the Atlantic coast with relatives and friends.

Dave and Hilda Mushquash have left to holiday with their son Peter's family and to meet their new grandson.

Jason Iddison has returned from a holiday in Montreal. He was accompanied home by his sister Jennifer.

Danny Campbell and Blaine Gerow of Chapleau spent the weekend with their respective parents, Mr. and Mrs. Jack Campbell and Mr. and Mrs.

Walter Gerow.

Mr. and Mrs. Lorne Zwaresh of New York have arrived to visit his father; and brother Stanley and family.

Mr. and Mrs. Cyril Brassard were in Nipigon and Thunder Bay to visit during the week.

Some courses offered along North Shore

Most of the individual courses offered at the main campus of Confederation College in Thunder Bay can also be offered in our communities here on the North Shore through Continuing Education.

These are post-secondary credit courses which can be used toward certificates and diplomas offered by the college upon successful program completion.

At times though the specific needs of a group of people are not met within the menu of credit courses which are available.

Potential students may wish to study a personal-interest topic: art appreciation, photography, or sewing for instance.

The student may wish to study a subject which can contribute to the quality of life which she/he is experiencing by taking a seminar in personal financial management, car care, or basic home repairs.

You may even wish to learn some alternate approach to your vocation or hobbies.

The possibilities are endless, and Confederation College can help.

Non-credit programs can be developed in any community where there are 10 or more students willing to take the course and an instructor and a facility can be accessed.

The students and the instructor basically determine the content of the course and the fees are calculated to cover the costs.

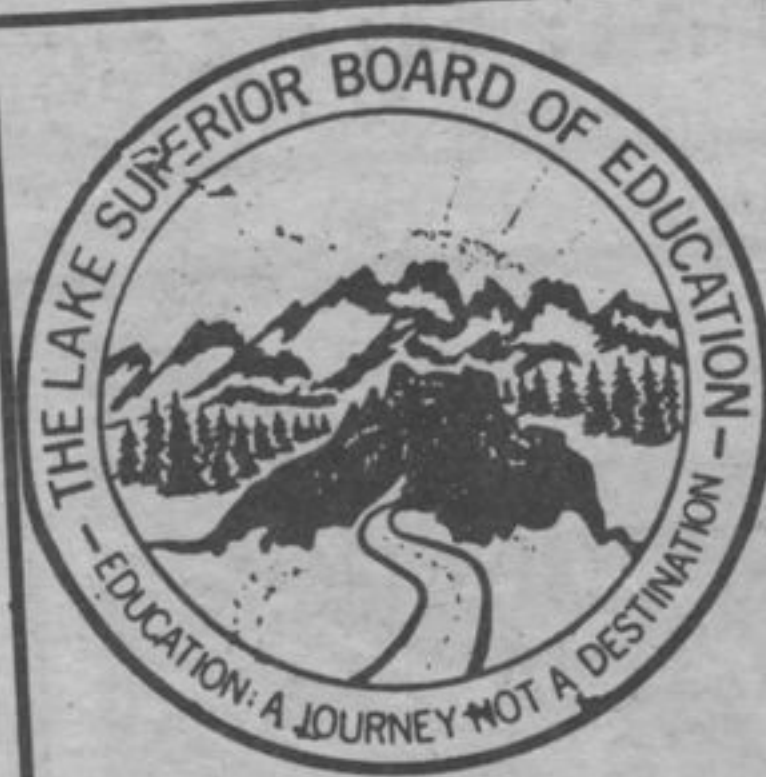
Non-credit courses and seminars are an excellent way to promote an interest in your hobby organization, and to develop group sharing knowledge and experience.

The first step toward developing such courses is to contact your supervisor of Community Programs, either as an interested student or potential instructor, to discuss your interest.

For more information on Confederation College program contact David Zub at 229-2464 1-800-465-3364 (toll-free).

CONFEDERATION COLLEGE- CONTINUING EDUCATION FOR YOU!

Going for a swim when your head's already swimming is an open invitation to trouble. Water sports and alcohol just don't mix. So before you dive in, be sure you haven't been in the drink. The message is quite simple — leave the alcohol behind.



LAKE SUPERIOR BOARD OF EDUCATION

NOTICE TO RATEPAYERS

The Lake Superior Board of Education is responsible for levying and collecting taxes, in five distinct areas: Manitouwadge, Marathon, Terrace Bay, Schreiber and the Lake Superior Locality (area surrounding the Townships).

In May the Board determined the taxes required to support their 1987 budget. Using the Ministry of Education's formula the tax requirement was calculated for the five areas mentioned above.

Subsequently, the Township of Manitouwadge applied for a Board of Arbitration as per Section 213(5) of the Education Act to review the tax allocation. The Township argued the tax allocation created an undue burden on the Ratepayers of Manitouwadge.

The Board of Arbitration consisted of the Clerk Treasurer's of the Townships of Manitouwadge, Marathon, Terrace Bay and Schreiber.

The Lake Superior Locality had previously been divided into four areas according to Regulation 619. Each of the four Townships represented the area of the locality adjacent to it. (i.e. Schreiber represented Rosspport and Manitouwadge represented Hemlo)

The Arbitrators approached the task of dividing the School Board's tax requirement from the basis of equity and fairness for the residential Ratepayers, thus making the taxes on a home comparable in each part of the Board. The Arbitrators felt they could not attain this objective in one year, however, in 1987 they made a concerted effort to move toward that objective.

The result of the arbitration was subsequently upheld by the Councils of the four communities. No Township appealed the decision.

In essence the process of arbitration had the following effect:

LOCALITY	Original Requisition	Arbitrated Decision	Increase (Decrease)
MANITOUWADGE	1,094,894	1,502,568	407,674
MARATHON	1,167,940	835,524	(332,416)
TERRACE BAY	1,557,234	1,387,664	(169,570)
SCHREIBER	1,678,807	1,700,999	22,192
	205,463	277,583	72,120
	5,704,338	5,704,338	0

Should you have any questions on the process, please contact Bruce Rousseau at the Board Office.

M. Twomey
Director

U
C
E
R
e
a
le
gr
R
A
w
M
sci
pa
Ru