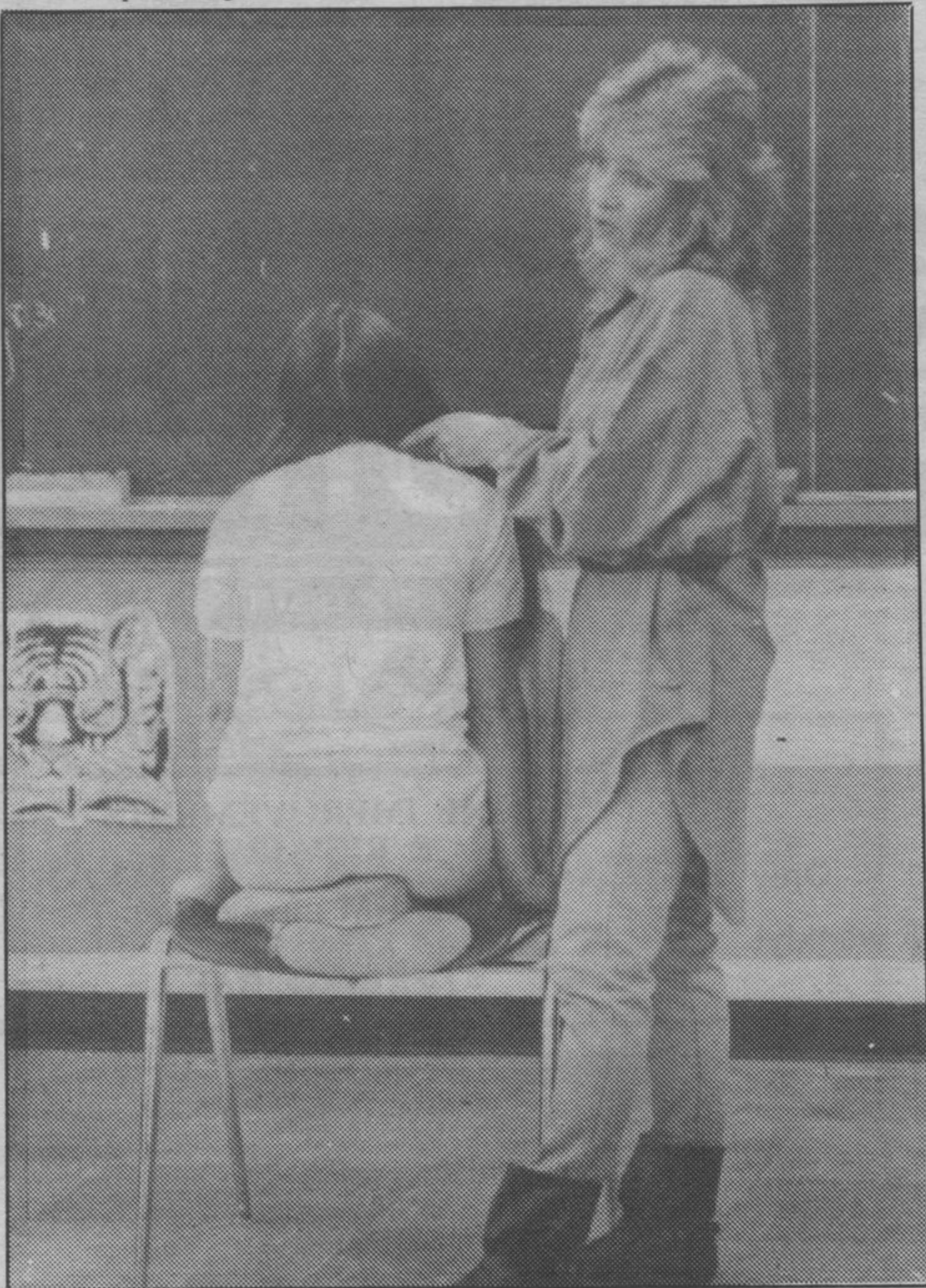


# Teacher resigns

The Lake Superior Board of Education, at a Special Education Board meeting held last month in Marathon, accepted with regret the resignation of Lake Superior High School teacher

Wilmot Hamilton. Hamilton is scheduled to retire on June 30, 1987, according to the minutes of the meeting.



## Career week

A Career Week Program was held at Schreiber Public School last week, with representatives from CP Rail, McCausland Hospital, CFNO Radio, and the school itself taking part in various career demonstration sessions. Michelle Cousineau, a hair stylist with Cedar Salon in Schreiber was also invited to participate, and on Nov. 6 she gave a Careers in Hairdressing course, using a number of volunteers from those in the audience.



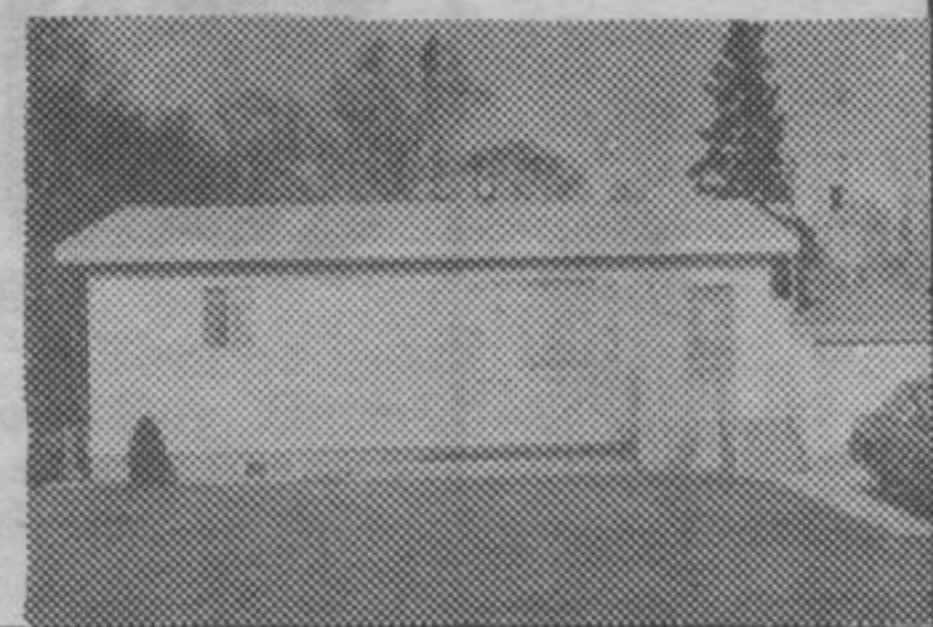
**ram**  
realty inc. 344-0701  
574 memorial ave.

**Gerry Smith - Sales Representative**  
229-1178

### NO DOWN PAYMENT

Why pay rent when you can own your home now. This 2 + 1 Bedroom Home with an immaculate interior, Full Basement and attached Garage is on a large fenced lot backing on green space.

**496 LAKEVIEW DRIVE**  
**'55,000.**



## Terrace Bay Schreiber News

### Subscribe Today!

Please enter the following subscription to the Terrace Bay-Schreiber News.

Name \_\_\_\_\_

Address \_\_\_\_\_

Please check the appropriate box below and mail cheque or money order to:

Local  one year ..... \$14 Elsewhere in Canada  one year ..... \$18

**TERRACE BAY - SCHREIBER NEWS**  
P.O. Box 579  
Terrace Bay, Ontario, P0T 2W0

# MAKE YOUR FIRST STOP NORTHWESTERN ONTARIO'S MOST COMPLETE LOGGING EQUIPMENT DEALER. POWELL EQUIPMENT.

**WE SPECIALIZE IN CUSTOM LOGGING EQUIPMENT THAT'S READY TO WORK!**



### EQUIPMENT:

- The full line of CATERPILLAR mechanized logging equipment including 3 models of feller bunchers, 2 skidder models (130 hp or 175 hp with cable or grapple), 5 models of delimiters, 9 models of swing-type log loaders (on rubber and track), and more.

- TANGUAY slashers (CC100B models) and specialized logging machines.



### PRODUCT SUPPORT:

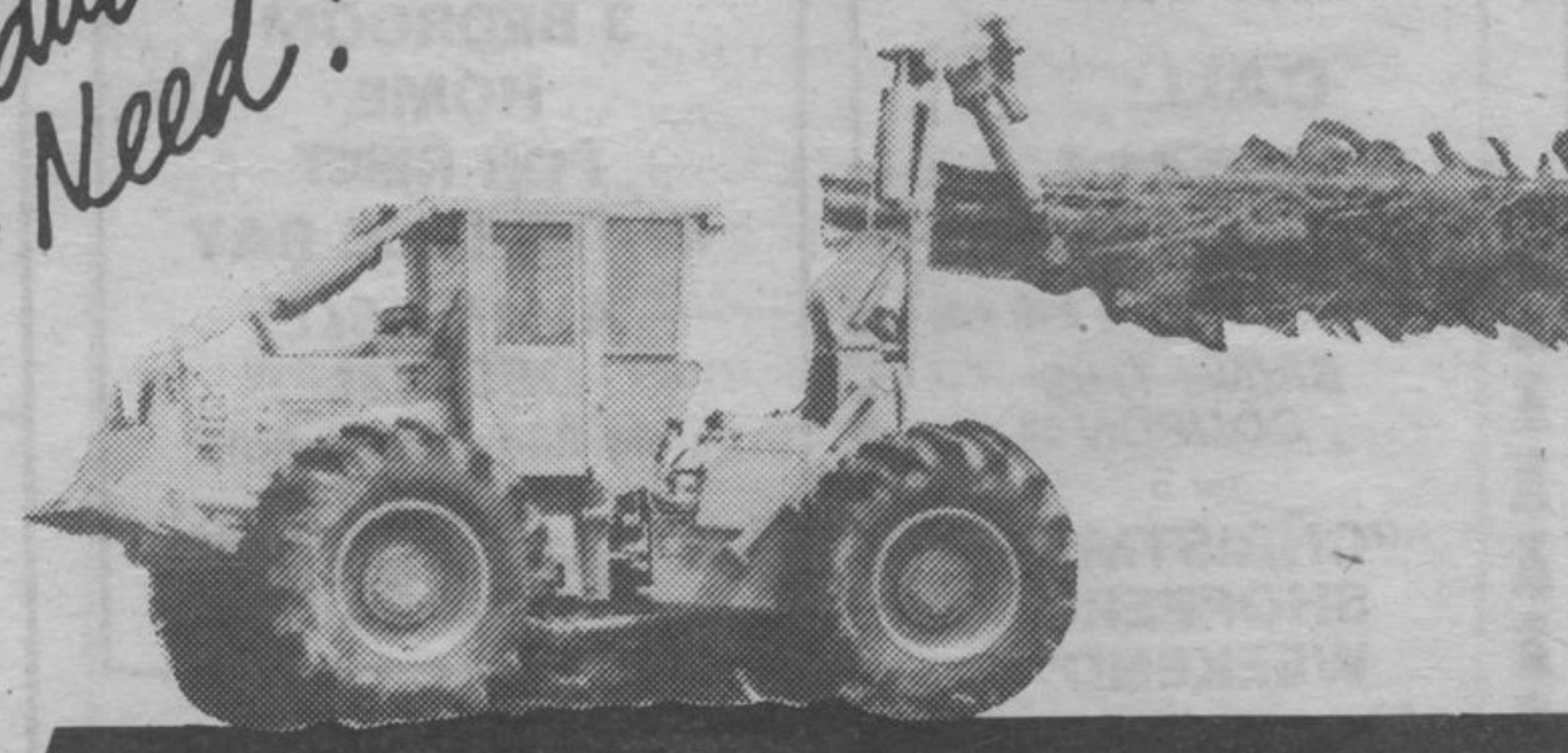
- Parts when you need them! A large inventory of new, used, rebuilt, and exchange parts and components always on-hand.
- Service when you need it! Complete in-shop service or field service anywhere in Northwestern Ontario by fully-trained and qualified technicians.
- Maintenance and service programs to keep you profitable! Custom Track Service, Technical Analysis, Guaranteed Operation, Scheduled Oil Sampling, and others.



### AND MORE...

- New CAT machine warranties — tailored to your needs to ensure machine availability.
- Equipment financing options that allow you to buy, lease, or rent your machines to suit your budget.

*Call us Today for the Products and Prices You Need!*



Let our logging equipment sales team introduce you to more machine value! Call Army Boyle, Guy Wolframe, or Mike Schlereth at:

**(807) 577-5701**

620 Beaverhall Place, Thunder Bay



**POWELL EQUIPMENT** Powell Equipment (1978) Limited  
Head Office 1455 Buffalo Place, Winnipeg.  
Branch Offices in Brandon and Thompson  
Manitoba and Thunder Bay, Ontario

 YOUR CATERPILLAR DEALER  
CATERPILLAR, CAT and  are trademarks of Caterpillar Inc.