

## Preventative Maintenance - economic sense

Cottage weather is around the corner, and motorists will soon be taking to the highways for weekend vacations and pleasure driving. The Ontario Safety League is asking all motorists to use a little preventive maintenance. It makes good economic sense.

expensive than corrective surgery!

Motorists should also be aware that an engine tune-up is the single most important maintenance factor for fuel economy. Ignition and carburetion systems must operate at peak efficiency for good mileage. Tune-ups are particularly critical for today's cars to obtain optimum economy and still keep emissions at the required low level.

Many drivers wait until something goes wrong before they get it fixed. They'll put up with a defective exhaust system, wipers that don't perform properly or a weak battery that is unreliable and then be terribly upset when these components let them down far from home. This is called "breakdown maintenance". Economically, it is the same as health care - preventive medicine is usually much less

Your car has taken quite a beating since you put on the snow tires, changed the spark plugs and checked the radiator level last fall. Not only will a well-tuned car give better fuel economy but a proper tune-up and a complete check of the car's system will ensure it is safe for your spring and summer trips.

**PRIVATE PILOT GROUND SCHOOL**  
starts May 1, 1984  
For details contact:  
**TERRACE AVIATION INC.**  
phone **825-9485**

### IN MEMORIAM

**BOON:** In loving memory of a dear mother and grandmother Eleanor Boon, who passed away April 28, 1983.

*This month comes with deep regret,  
It brings back the day we cannot forget  
In our hearts Mom you will always stay  
No verse, no flowers, no tears can say  
How much we miss you every day.*

Always remembered and sadly missed by daughter Peggy, son-in-law Al, and grandchildren.

 Canada Mortgage and Housing Corporation  
**Tenders**

**SEALED TENDERS** addressed to the undersigned will be received up to **2:00 p.m. DST, May 16, 1984** for construction of the following single family housing unit projects:  
**SCHREIBER - Three (3) Units**  
**TERRACE BAY - Two (2) Units**  
**HURKETT - One (1) Unit**

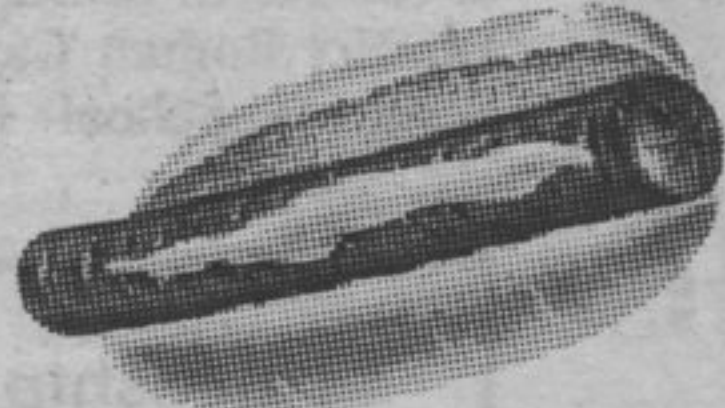
Plans, specifications and tender documents for any or all of the above projects are available for a deposit of \$50.00 per tender package. Deposits will be refunded if package is returned complete and in good condition.

Each tender must be accompanied by a 10% Bid Bond or a Security Deposit in the amount of 10% of the tender. All cheques must be made payable to CANADA MORTGAGE AND HOUSING CORPORATION. All bidders must provide verification of registration with the HUDAC New Home Warranty Program. The lowest or any tender not necessarily accepted.

Address:  
**R.B. FENLON, Manager**  
Canada Mortgage and Housing Corporation  
P.O. Box 940  
Thunder Bay, Ontario  
P7C 4X8

For further information please contact Heidi Uhlig, Program Officer, Rural and Native Housing Program at the above address; or call (807) 623-3496.

# Meat Specials

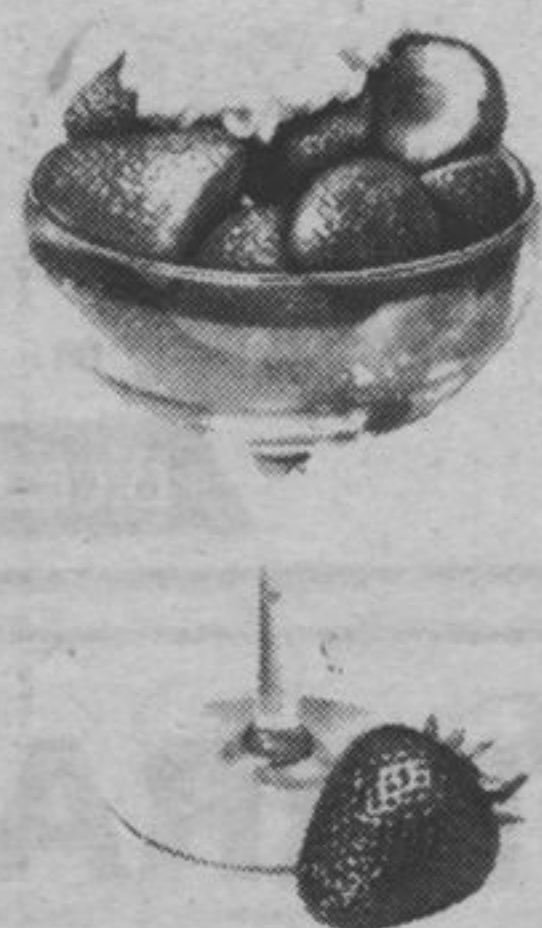


## COST-CUTTING BARBECUE MEATS



aged for good eating <b>CHUCK STEAKS</b> <b>1.58</b> lb.	extra lean <b>GROUND CHUCK</b> <b>1.78</b> lb.	long or short cut, great on a BBQ <b>BEEF RIBS</b> <b>1.28</b> lb.	great <b>SIRLOIN STEAKS</b> <b>2.18</b> lb.
Foodmarket quality <b>GROUND BEEF</b> <b>1.18</b> lb.	boneless, waste free <b>ROUND STEAKS</b> <b>2.58</b> lb.	Seven Farms <b>WIENERS</b> <b>1.28</b> lb.	Family <b>PORK CHOPS</b> <b>1.18</b> lb.
Centre cut <b>PORK CHOPS</b> <b>2.69</b> lb.	semi boned <b>CROSS RIB ROASTS</b> <b>1.68</b> lb.	Seven Farms <b>BACON</b> <b>1.88</b> lb.	boneless <b>STEAK BEEF</b> <b>1.18</b> lb.

## PRODUCE "THE FRESHEST IN TOWN"



**STRAWBERRIES**

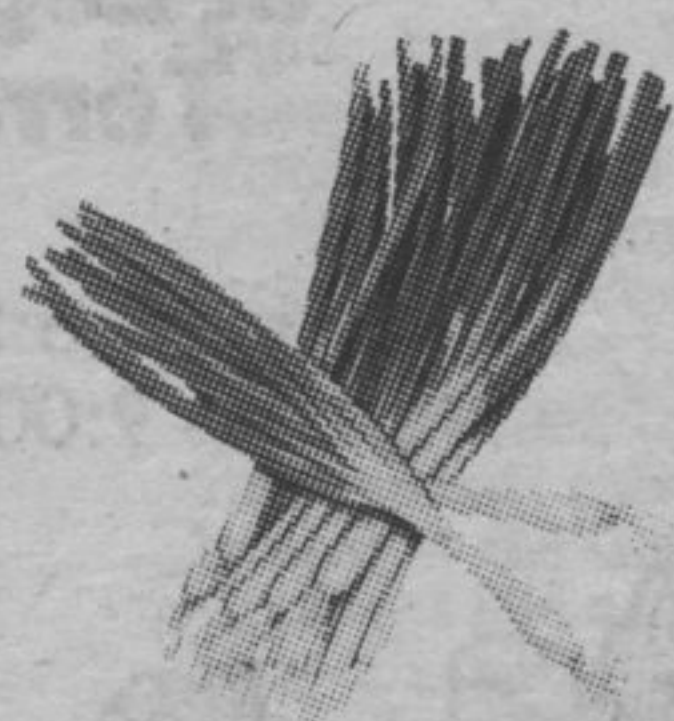
**.99** pint

flat of 12

**11.79**

**BROCCOLI**

**.69** lb.



**GREEN ONIONS**

**.89** 3 bunches

Florida, white

**POTATOES**

**.59** lb.

California, large heads

**LETTUCE**

**.59** each

B.C. Red Delicious

**APPLES**

**2 lbs. / 1.00**

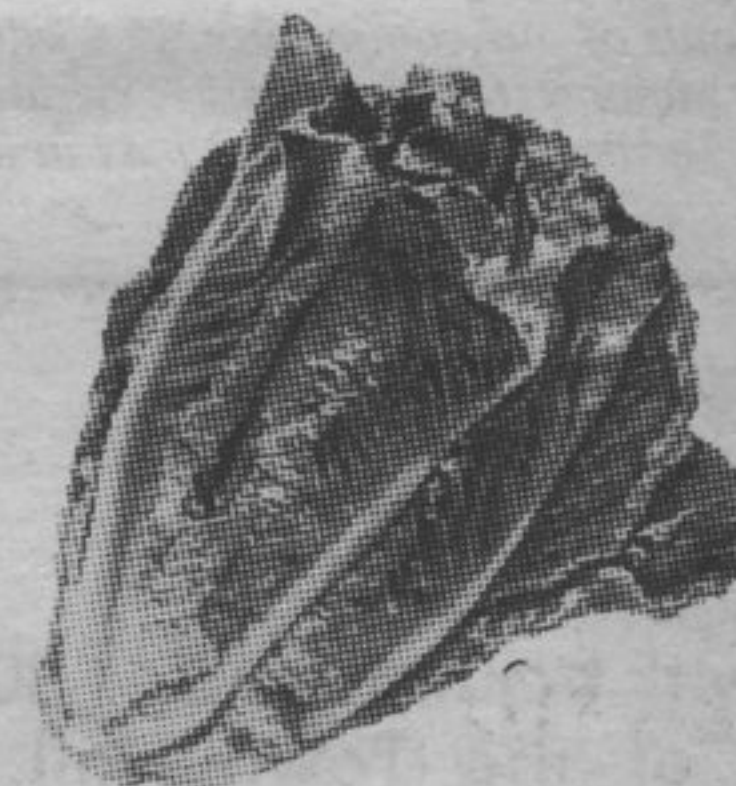
size 40's

**ORANGES** **.39** lb.

40 lb. case

**13.99**

fresh



**ROMAINE LETTUCE**

**.59** each

## FROZEN

Beatrice (no additives) 2 lit

**ICE CREAM**.....

Sunsun 355 ml.

**ORANGE JUICE**

Sunsun, Pink or Reg., 355 ml.

**LEMONADE**.....

Swanson, 11 oz.

**T.V. DINNERS**..

Sara lee, 369 gram

**LAYER CAKES**

# SCHREIBER FOODS

FREE DAILY DELIVERY TO SCHREIBER AND