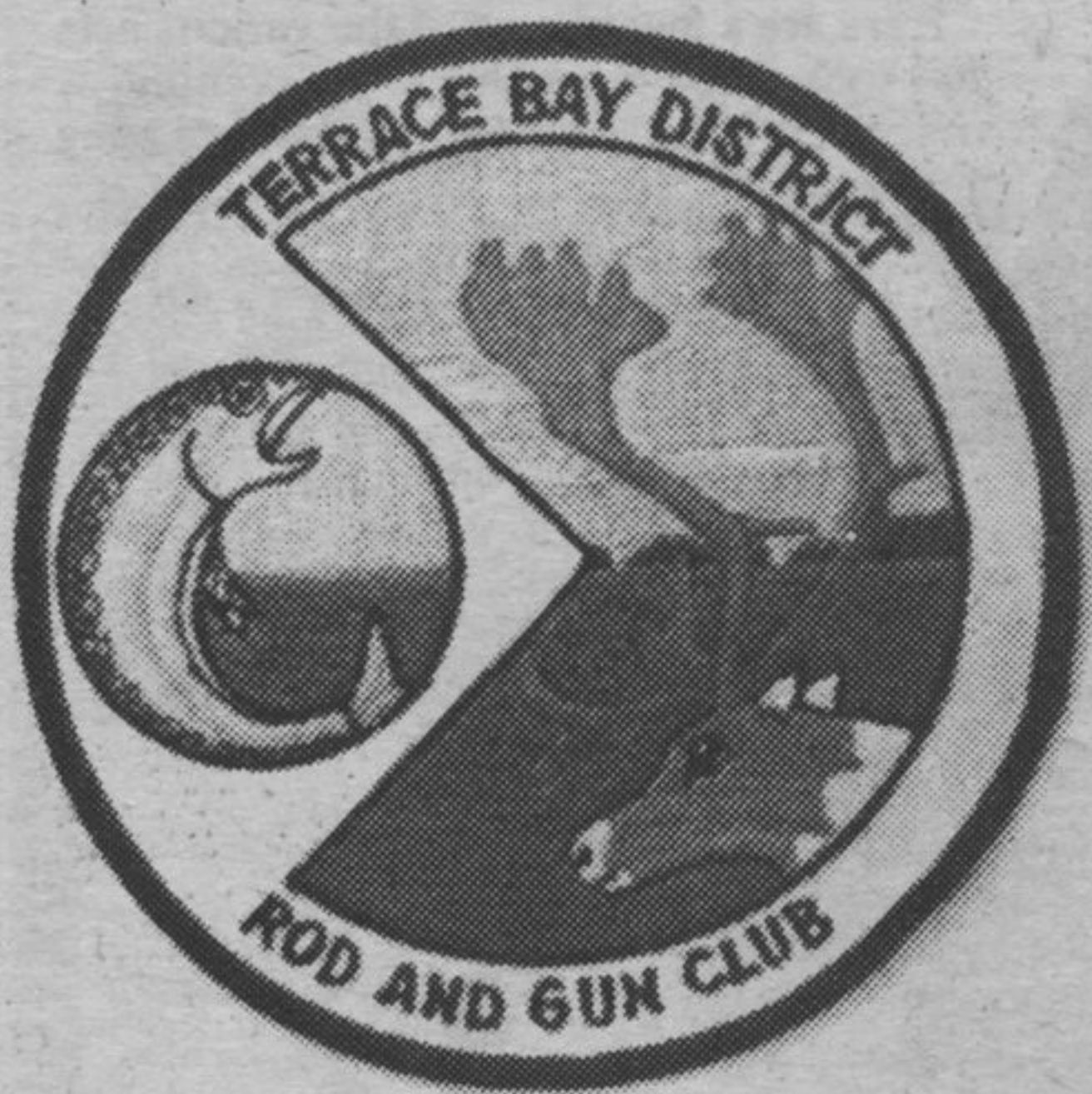


# Local Organizations

## - Terrace Bay

### Rod & Gun Club



Terrace Bay Rod & Gun Club badge and logo was designed by Joe Dobush and portrays fish, caribou and the Slate Islands.

by SHARON MARK  
**EDITOR'S NOTE:**  
 The "News" would like to do interviews with Clubs and Organizations in the communities of Terrace Bay, Schreiber and Rossport, in hopes that it will assist newcomers and long-time residents of our communities to know and to better understand the aims and goals of these organizations. I would like to introduce you to one of these clubs -  
**Terrace Bay Rod and Gun Club**

George Robinson, a resident of Terrace Bay and President of the club, first initiated the interest in reviving the Terrace Bay Fish and Game Club. He was concerned about the fishing and wildlife in this area. The Terrace Bay Fish and Game Club was reactivated in December 1980 under the title of the Terrace Bay Rod and Gun Club. The club then affiliated itself with the O.F.A.H. (Ontario Federation of Anglers and Hunters). By being affiliated with this organization, their small 63 family membership became part of a 30,000 member lobbying group.

The 1983 Executive of the Club are: *President* - G. Robinson; *Vice-President* - R. Slawson; *Secretary* - J. Fitzpatrick; *Treasurer* - R. Smeltzer; *Membership* - B. Sutch; *Range Officer* - B. Love.

The aims and objectives of the club is to support and induce good sportsmanship and conservation throughout our district, and also to keep the members and public informed of the Ministry of Natural Resources policy and guidelines changes, which have involved the club in some very controversial issues. Some of the annual functions of this club include a Fish Derby, held the first weekend in June; this is also the first of numerous derbys in

The second weekend in September, the Club hosts their annual "Turkey Shoot" which is noted to be 'one of a kind' in this area.

Next year they propose to have an Ice Fish Derby. Hopefully the Derby will take place around the March break and is scheduled for week long events with derby prizes and a wind-up dance.

A few of their projects for 1983-84 are: looking for suitable land, preferably five acres which is intended for a club house and shooting range; enhancing spawning beds in the Terrace Bay area and continuing work on a topographical map, showing various fishing and hiking trails for tourists and local residents.

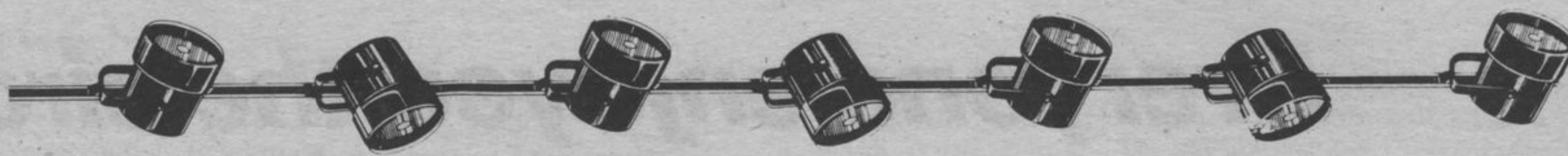
The club would be very interested in taking a more active part in fish restoration in this area and in planting wild rice in order to induce more migratory water fowl to the immediate area (geese and ducks).

The Club is disappointed with the upkeep of the ministry access roads and the abandoned roads, along with the lack of development of new access roads.

One thing the executive is proud of in our area is the variety of fish and game. The executive hopes to entice more conservation oriented people into their club in the coming years.

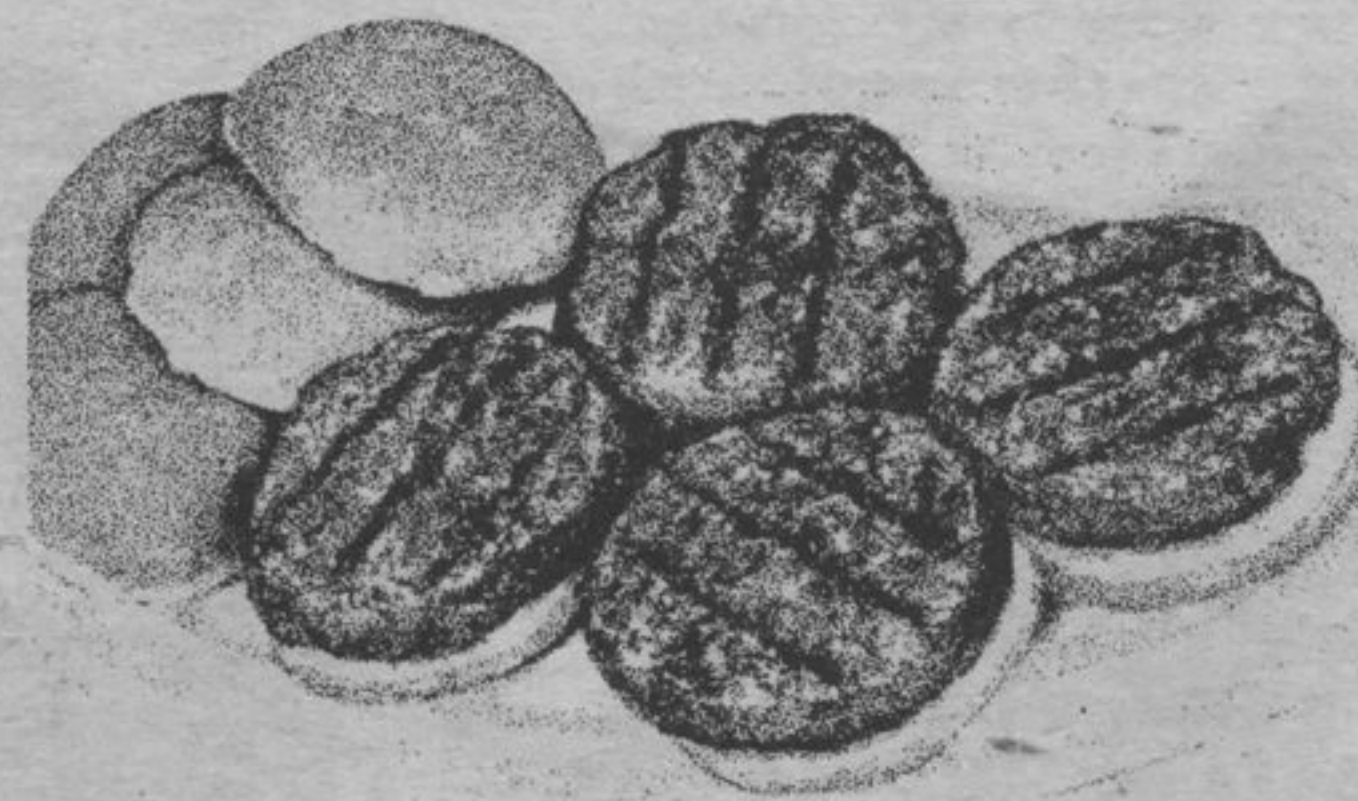
The Club holds their monthly meetings in the lower part of Birchwood Terrace, on the first Monday of each month at 7:30 p.m. They try to have educational films on fish and wildlife and they have frequent presentations by the M.N.R. Anyone interested in attending their meetings will be welcomed.

If you would like more information on this very worthwhile club, please feel free to contact Brian Sutch at 825-0000



Foodmarket quality

**GROUND BEEF**  
**2.38** kg.  
**1.08** lb.



Extra lean  
**GROUND CHUCK**  
**3.73** kg.  
**1.69** lb.

Try sweet and sour style, Del Monico

**BEEF RIBS OR RIB EYE RIBS** **3.95** kg. **1.79** lb.

Long or short cut, lean and juicy  
**BEEF RIBS** **2.82** kg. **1.28** lb.

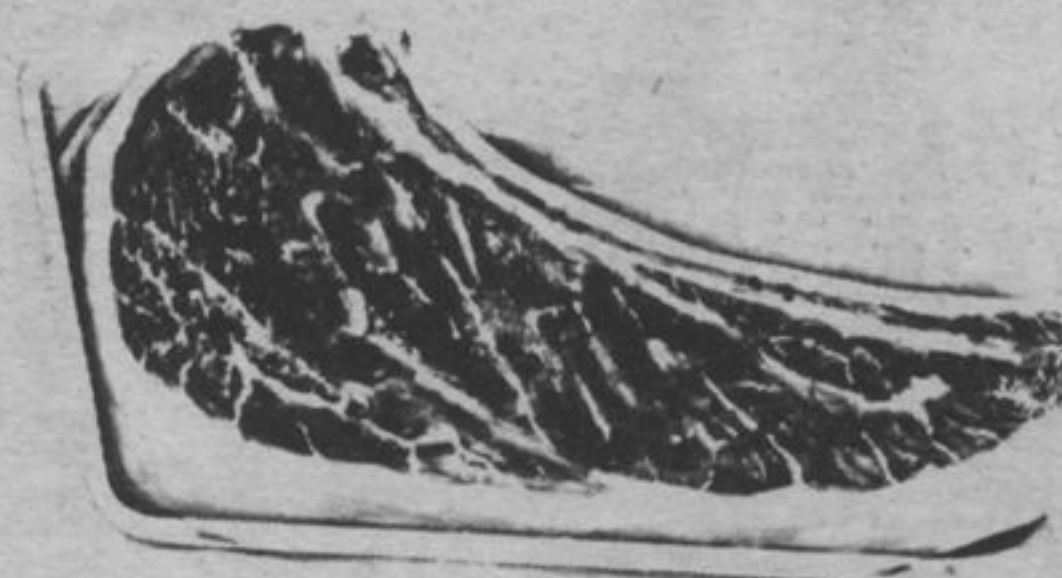
Family pack, 9 - 11 per pkg.

**PORK CHOPS** **3.73** kg. **1.69** lb.

Maple Leaf or Schneiders, 9 pieces per bucket  
**BUCKET OF CHICKEN** **4.69** each

Tender and juicy

**PRIME RIB STEAKS**  
**7.89** kg. **3.58** lb.



Maple Leaf, fine grind, Devon

**GARLIC SAUSAGE** **2.62** lb. **1.19** lb.

Schneiders, 500 gram pkg.

**BACON** **2.58** ea.

Fast Fry, try with steak and eggs

**Beef Minute Steaks** **6.35** kg. **2.88** lb.

7-Farms, 500 gram pkg.

**WIENERS** **98¢** ea.

Baby beef, skinned and deveined

**BEEF LIVER** **1.94** kg. **88¢** lb.



The King of all roasts

**PRIME RIB ROAST**  
**7.23** kg.  
**3.28** lb.

Lean chunks of lean meat, "m-m good"

**STEW BEEF**  
**4.14** kg. **1.88** lb.

Ontario No. 1  
 10 lb. bag  
**POTATOES**  
**1.99**

## PRODUCE *Specials*

California, Canada No. 1

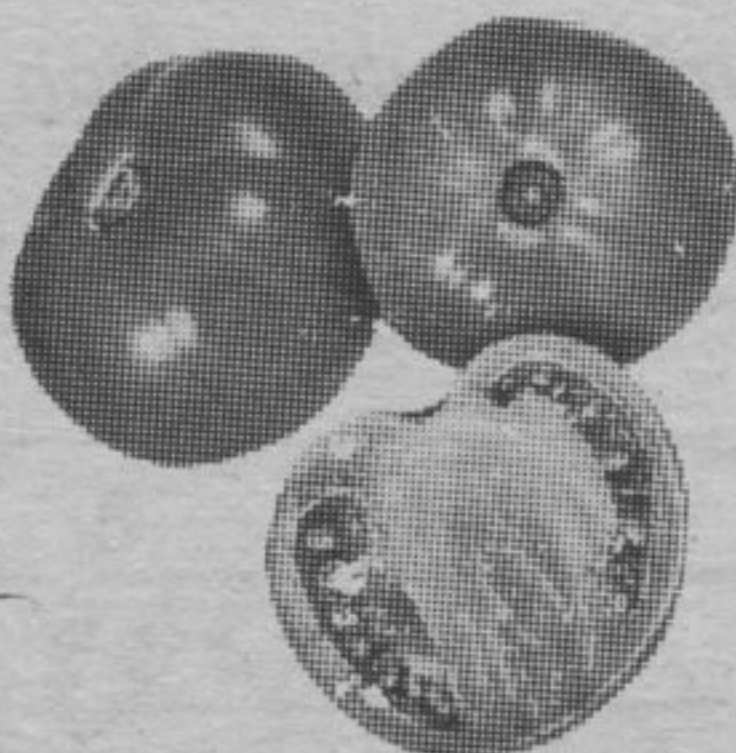
**LETTUCE**  
**69¢** ea.

Seedless, Canada No. 1  
**GREEN GRAPES** **1.52** kg. **69¢** lb.

Ontario, Canada No. 1  
**PEACHES OR PEARS** **2lbs. 1.00**

Sunkist Valencia, size 138's  
**ORANGES** **86¢** kg. **39¢** lb.

Sweet, Ontario No. 1  
**GREEN PEPPERS** **86¢** kg. **39¢** lb.



Ontario extra large  
**TOMATOES**  
**1.52** kg.  
**69¢** lb.

Medium, Ontario seedless  
**CUCUMBERS**  
**69¢** ea.

