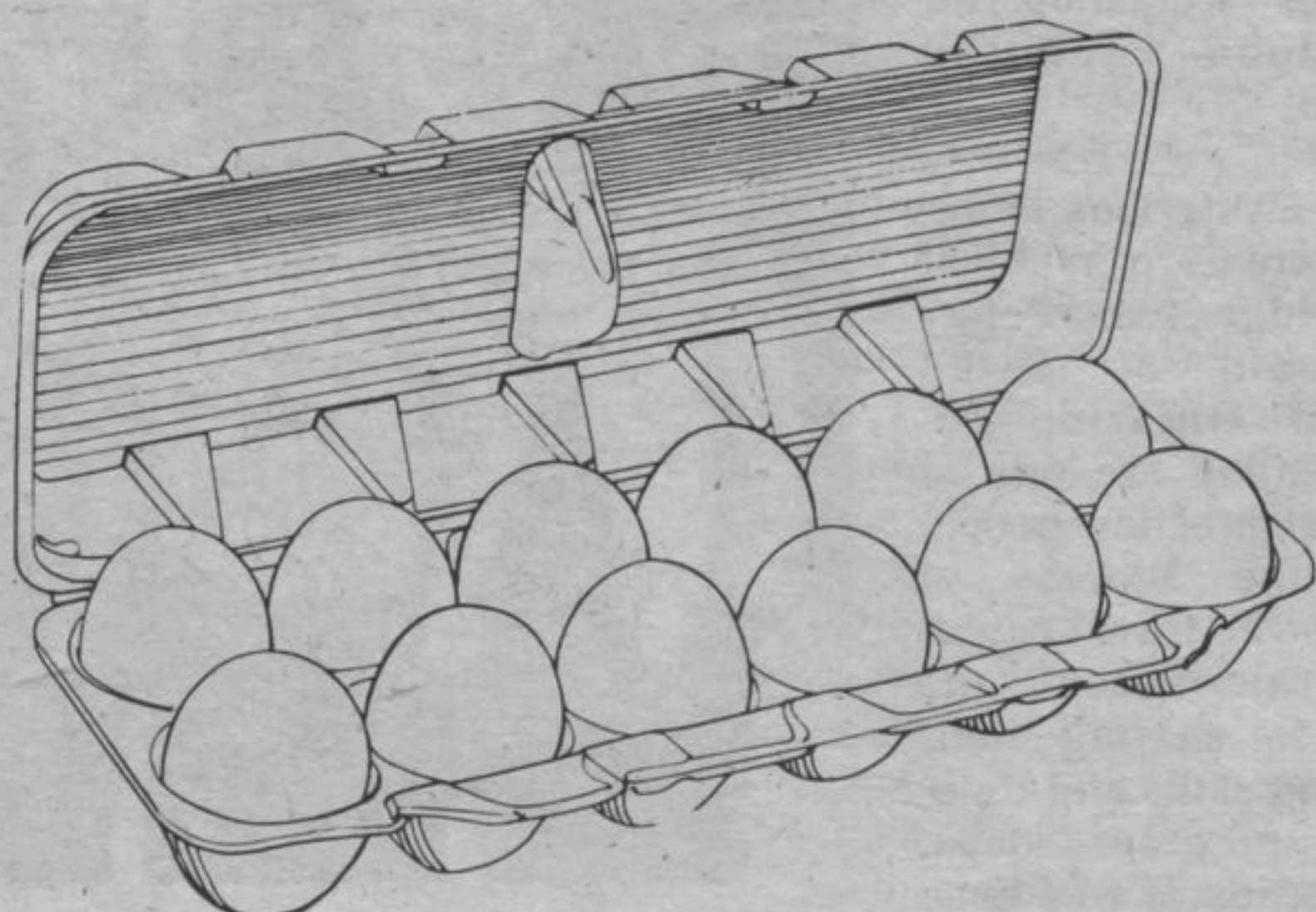


**ANYWAY
YOU SLICE
IT...YOU
WIN HERE!**



Farm Fresh, grade A large
EGGS
1.25 dozen

Red Rose, 680 gram
ICED TEA **2.79**

Kleenex
FACIAL TISSUE **88¢**

Red Rose Regular grind, 1 lb.
COFFEE **2.79**

Stems and pieces, 10 oz. tin
MUSHROOMS **89¢**

1.36 litre
APPLE JUICE **1.29**

Sunspun, 1 litre
VEGETABLE OIL **2.09**

Singles, 500 gram
CHEESE SLICES **3.59**

Shaw's Holsum
WHITE BREAD **75¢**

Beatrice Fruit Bottom, 175 gram
YOGURT **59¢**

Kraft, 250 gram
MARSHMALLOWS **2/1.29**

Smooth or crunchy, 750 ml.
PEANUT BUTTER **3.09**

Assorted, 1 kg.
MACARONI PRODUCTS **20¢**
off shelf price

Italian seasoned
BREAD CRUMBS **99¢**

Assorted, 250 gram
GRANOLA BARS **1.75**

Betty Crocker, 227 gram
HAMBURGER HELPER **1.29**

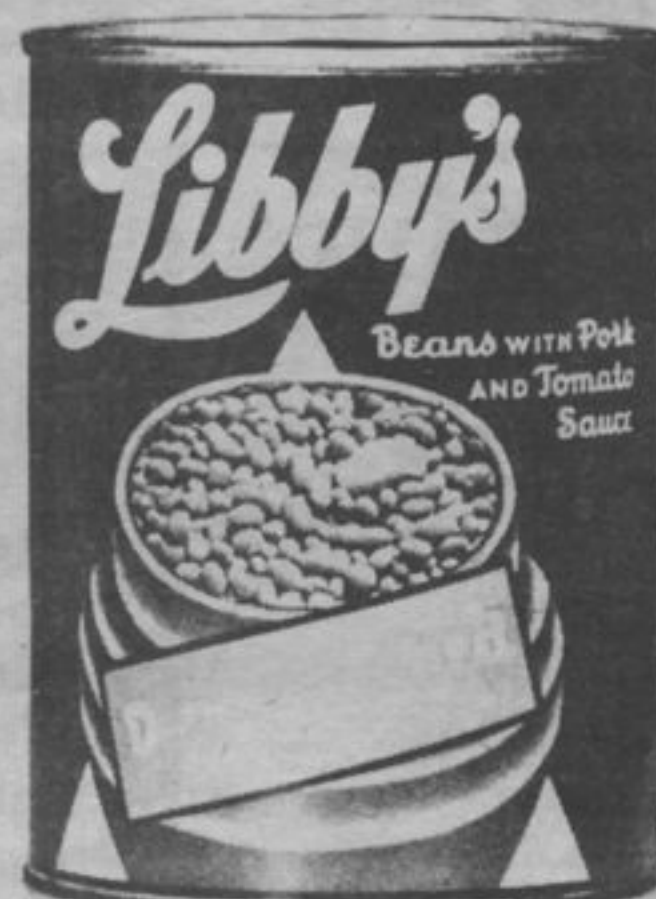
Ivory, 4 personal bars
SOAPS
1.29



**KRAFT
DINNER**
59¢



Libby's, 398 ml.
**DEEP
BROWNEED
BEANS**
79¢



r Deli

kg. **3.58** lb.

kg. **1.98** lb.

CHEESE

kg. **2.98** lb.

Thanks for Shopping at
Our Store
And Have a Nice Day!!



J.B. 12 oz. tin
ORANGE JUICE **79¢**

Niagara 12 oz. tin
ORANGE JUICE **99¢**

Jello assorted flavours
PUDDING POPS **1.99**

Beef-eater, 1 kg. pkg.
FRIED POTATOES **1.49**

RAIN CHECK

Any advertised items out of stock when you shop will be made available to you at the sale price as soon as the product is available. Leave your name & the item requested with our cashier.

OWNED & OPERATED BY THE FIGLIOMENI FAMILY
SCHREIBER FOODMARKET LTD.

Free Daily Delivery to Schreiber and Terrace Bay • 824-2599 • (Butcher Shop) 824-2037

Veteran's radiation health study

Veterans Affairs Minister W. Bennett Campbell is asking any active or former Canadian military or civilian personnel who were exposed to varying levels of radiation during operations with the Department of National Defence, to communicate with the University of Ottawa.

A study, commissioned by the Minister, is being carried out by the university's Department of Epidemiology and Community Medicine to investigate the mortality rate among those exposed during clean-up operations at the Chalk River Atomic Energy plant in Ontario in 1953 and 1958, and the observation of nuclear test blasts at Nevada in 1955 and 1957, and in Australia in 1956 and 1957.

The results of the study may prove most useful to the Canadian Pension Commission to determine the eligibil-

ity for disability pensions and allowances under the Pension Act, for former members of the Armed Forces and their dependants.

In order for the study to yield valid results, it is important that all persons who were exposed, whether or not adverse effects resulted, are identified.

Anyone directly involved, or who is aware of a friend or relative who was involved, in any of the operations is asked to write in confidence to:

Dr. S. Raman, Department of Epidemiology and Community Medicine, University of Ottawa, 451 Smyth Road, Ottawa, Ontario K1H 8M5.

The following information is required:

Full name, current address and telephone number; date of birth; service number(s); date, place and details of exposure.

Terrace Bay

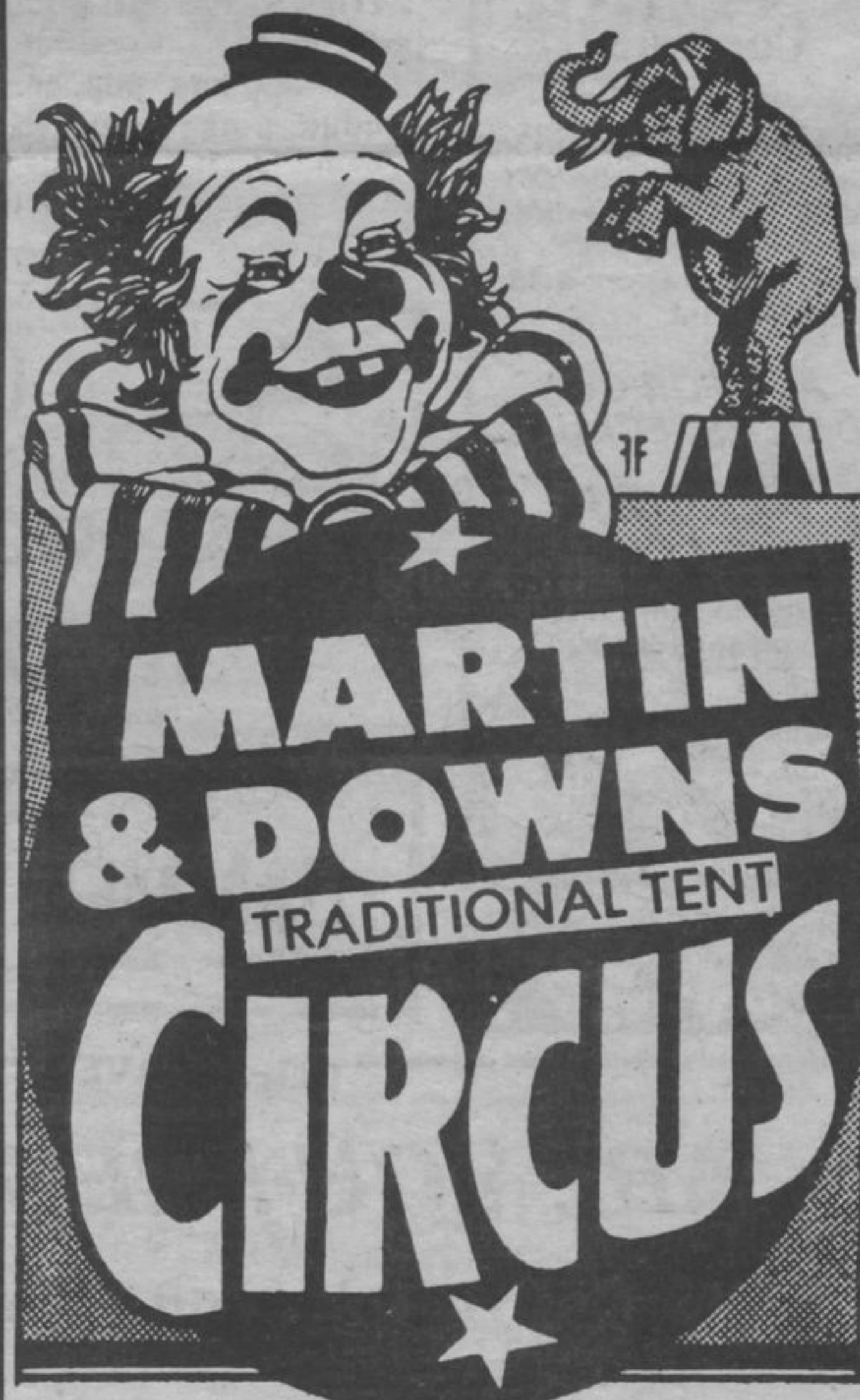
Tues. Aug. 30
6:00 and 8:15 p.m.
Texaco Ball Field
Recreation Dept.

Marathon

Wed. Aug. 31
6:00 and 8:15 p.m.
Ball Park
Lion's Club

UNDER THE BIG TOP
CLEAN FAMILY ENTERTAINMENT ■ 90 MINUTES OF CIRCUS THRILLS

RAIN OR SHINE



Six tons of elephants . . . Presenting the famous Hollywood elephants featured on CTV's "CIRCUS" . . . Hand balancing acrobats . . . Unicycle stars . . . Liberty ponies . . . Canine comics . . . ponies . . . Canine comics . . . Monkey actors . . . Funny clowns . . . Jugglers . . . mule . . . llama . . . Daring trapeze and aerial acts.

ALL ADVANCE TICKETS: \$3.00

**AT DOOR: Adult \$4.00
Child \$3.50**

All prices include tax

Advance Tickets available from the Terrace Bay Recreation Dept. and Marathon Lions Club members.

NO ADVANCE TICKETS SOLD ON CIRCUS DAY.

Visit our

Python snake exhibit, pony rides and other midway attractions before and after the main show at small addition cost.