

The 19th Hole



BY MIKE MOORE

The good weather has brought out a lot of golfers to the Twilights and Tournaments. The results of the July 20th Twilight are: **0-14 handicap**

1st Low Gross - Bob Smilsky - 36;
2nd Low Gross - Paul Dashkewytch - 37;
3rd Low Gross - Paul Malashevski - 38;

4th Low Gross - Tony Costa - 39.

1st Low Net - Terry O'Neill - 34½;
2nd Low Net - Albert Courtemanche - 35;

4th Low Net - Rick Desonghe - 35½.

15 T

1st Low Gross - John Kowalchuck - 41;

2nd Low Gross - Terry Des O'Driscoll - 43;

3rd Low Gross - Terry Black;
4th Low Gross - Mike Miller - 45.

1st Low Net - Gary Gusul - 32;

2nd Low Net - Paul Cebrario - 34½;

3rd Low Net - Pat McKenna - 35;

4th Low Net - Jim Figliomeni - 35½.

The July 27th Twilight Results are: **0-14**

1st Low Gross - Paul Dashkewytch - 35;

2nd Low Gross - Bob Smilsky - 36;

3rd Low Gross - Tony Costa - 38;

4th Low Gross - Bill Stachiw - 39;

1st Low Net - Kim Gellert - 31½;

2nd Low Net - Mark Dashkewytch - 32½;

3rd Low Net - Trent Desaulniers - 34½

4th Low Net - Terry O'Neill - 34½.

15 T

1st Low Gross - John Kowalchuck - 42;

2nd Low Gross - Terry Black - 42;

3rd Low Gross - Len Webb - 42;

4th Low Gross - Bob Churchley - 44;

1st Low Net - Pat Tiller - 31½;

2nd Low Net - Fred Figliomeni - 33;

3rd Low Net - Don Yule - 33½;

4th Low Net - Russ MacAdam - 33½.

On Sunday, July 23rd, the Knights of Columbus Tournament was held. One of the largest groups in recent memory teed off in pursuit of this handicap event. Great course conditions contributed to some excellent scores.

This year's winner with a fine, low net score of 67, is Herb Gellert. Close behind Herb were: Bud Aylward - 68; Norm McCuaig - 68; Russ MacAdam - 68; Kim Gellert - 69.

1st Low Gross - Mark Dashkewytch - 76;

2nd Low Gross - Trent Desaulniers - 82;

3rd Low Gross - Des O'Driscoll - 85;

4th Low Gross - Terry O'Driscoll - 88.

Hi Hidden Hole - Lawrence Spoziale.

Lo Hidden Hole - Shane Riley.

Golfers are asked to take note of the caps and glasses that are for sale at the Pro Shop. These items bear our new Club Logo, designed by Mr. Lorne O'Neil.

On Saturday, August 13th, Mr.

continued on page 9

Regular
GROUND BEEF
2⁶⁰ kg. **1¹⁸** lb.



Medium
GROUND CHUCK
4¹⁷ kg. **1⁸⁹** lb.

Centre cuts, table rite trim
PORK LOIN
5⁹³ kg. **2⁶⁹** lb.

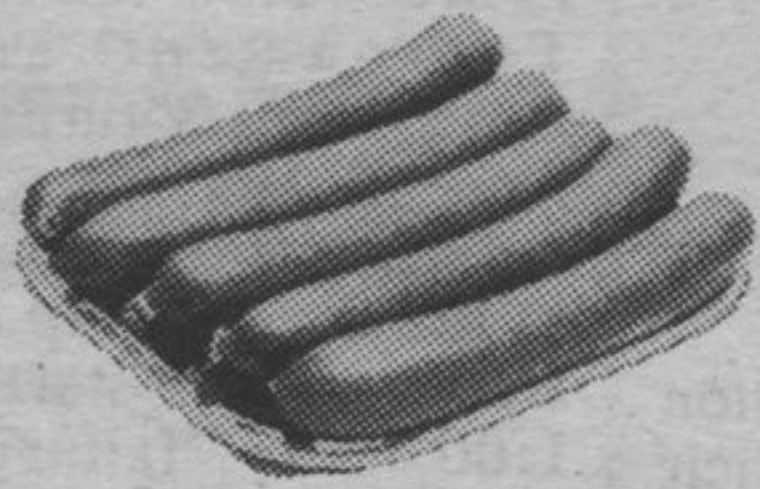
7 Farms Brand, 500 gram pkg.
BACON
2.29

Family pack, 9-11 per pkg.
PORK CHOPS
3⁹⁵ kg. **1⁷⁹** lb.

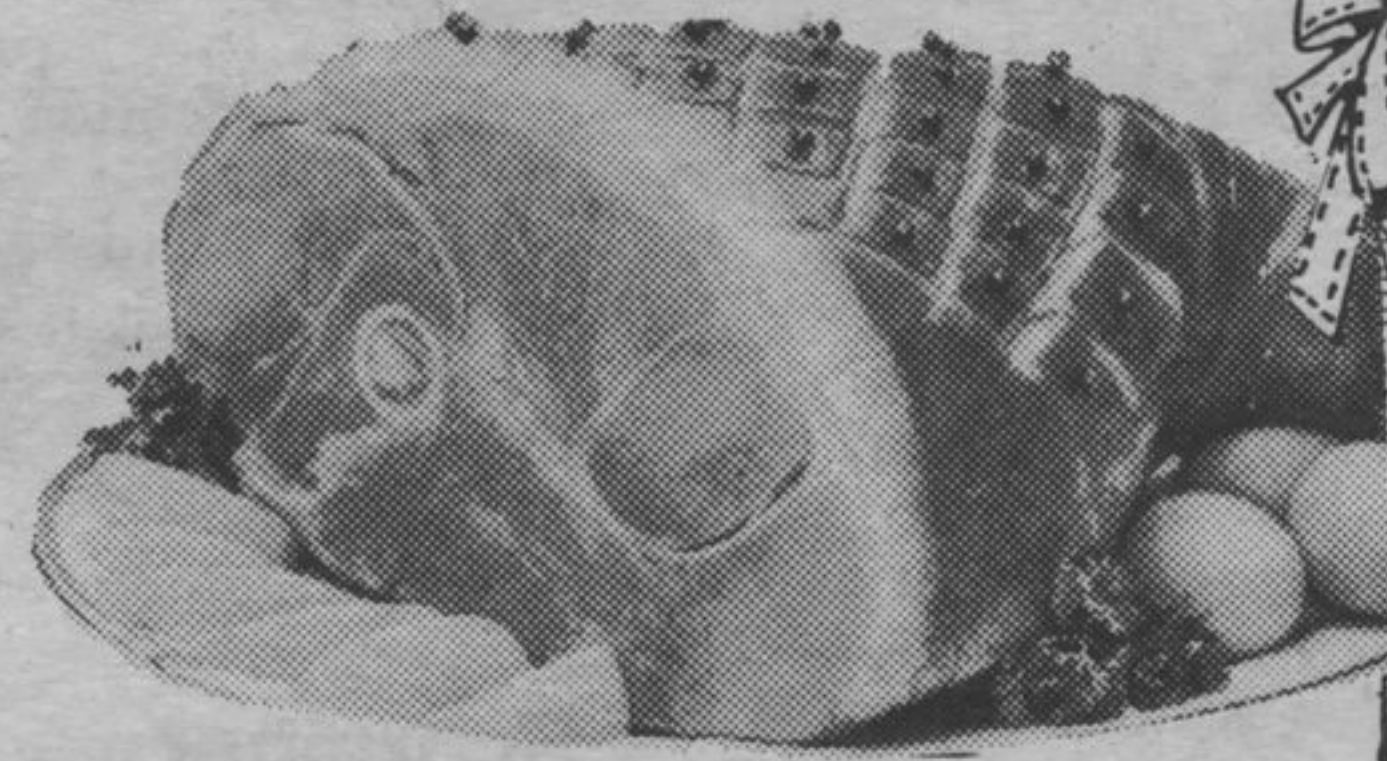
CROSS RIB ROAST or CROSS RIB STEAKS
4¹⁴ kg. **1⁸⁸** lb.

Fast fry, great with steak and eggs
MINUTE STEAKS
6³⁹ kg. **2⁸⁸** lb.

Maple Leaf, whole or half
HAMS
3⁰⁶ kg. **1³⁹** lb.



Maple Leaf, 500 gram pkg.
WIENERS
1.39



Bone-in, Aged for good eating
CHUCK STEAKS
3²⁸ kg. **1⁴⁹** lb.

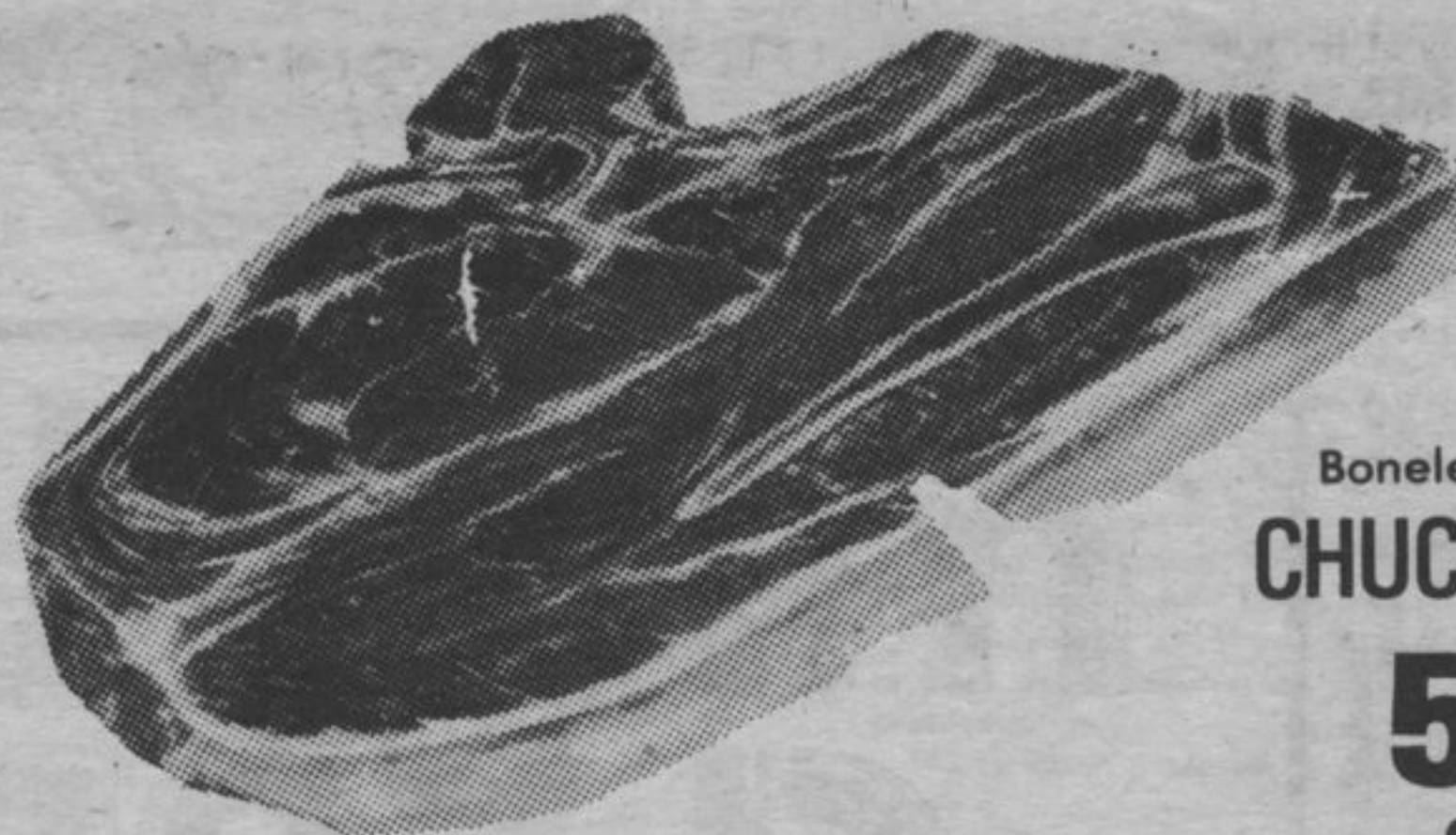
Boneless waste free
RUMP ROAST
5⁷¹ kg. **2⁵⁹** lb.

Butt or shank portion
HAMS
3⁹⁵ kg. **1⁷⁹** lb.

Boneless waste free, whole or half
ROUND STEAKS
5⁴⁹ kg. **2⁴⁹** lb.

Miami style, B.B.Q. ready or oven tender
BEEF ROAST
7²³ kg. **3²⁸** lb.

Burns Brand, from the deli-counter, sliced or shaved, your choice
COOKED HAM
6⁵⁹ kg. **2⁹⁹** lb.



Boneless waste free
CHUCK STEAKS
5⁰⁵ kg. **2²⁹** lb.

Seasoned tray pak, oven ready
FRYING CHICKENS
3⁰⁶ kg. **1³⁹** lb.



E.W. (Ted) Paget
B.Sc., B.Ed., LL.B.
Barrister & Solicitor

SIMCOE PLAZA
Terrace Bay, Ontario
Tel: 825-9379

PROSPECTORS - EXPLORATION COMPANIES:

SCHREIBER-TERRACE BAY-MARATHON

The Ontario Ministry of Natural Resources will provide an economic geologist to visit, assay and advise you on the potential of any mineral occurrence you may have staked, or know the location of in the Schreiber-Terrace Bay-Marathon areas. This service is provided free of charge. The Schreiber-Terrace Bay-Marathon economic geologist program encompasses an area from Nipigon east to Marathon.

This program is funded by the Ministry of Northern Affairs.

For further information call (collect):
Bernie Schnieders
Resident Geologist's Office
Ministry of Natural Resources
Thunder Bay
(807) 475-1331



Hon. Alan W. Pope
Minister
W. T. Foster
Deputy Minister

California, Canada No. 1
NECTARINES
1.30 kg. 59¢ lb.

California Jumbo size
CANTELOPES
1.49 ea.

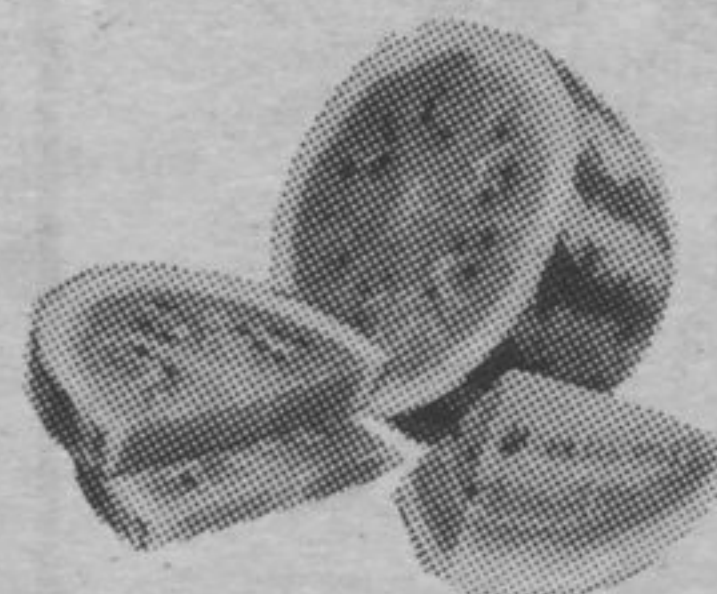
Red or green, California
Canada No. 1
GRAPES
2.18 kg. 99¢ lb.

Sweet Minnesota
CORN ON COB
10/1.99

BEST BUYS
IN OUR PRODUCE DEPT.

WHERE THE BEST IS ON PARADE

Texas 18-20 average
WATERMELON
3.99 ea.



Ontario No. 1, large and crisp
LETTUCE
2/1.00

B.C. Domestic
PEACHES
1.96 kg. 89¢ lb.

Ontario
ZUCCHINI SQUASH
86¢ kg. 39¢ lb.

U.S. No. 1, 10 lb. bag
POTATOES
2.69

TOM-BOY FOODS

