

L.S.B.E. responds ...

Continued from page 5
 blished as a priority
 e construction of a
 chnical facility for the
 gh school in Mara-
 on. To date no appro-
 l has been granted,
 en though the board
 as indicated a willing-
 ss to pay the cost of
 e program as an up-
 ont contribution to the
 tal project, namely the
 placement of Mara-
 on High School and
 e establishment of K-
 in that community."
 "Quality facilities
 ust exist in northern
 mmunities as in other
 arts of the province
 ten in the north the
 ly facility available for
 mmunity use is the
 cal school. This board
 ould again like to urge
 e Ministry of Northern
 Affairs to identify school
 cilities as a priority and
 allocate some dollars
 an annual basis to
 rgrade facilities and
 ence the quality of edu-
 cational programs and
 ervices."

Among the other
 ems addressed in the
 esponse are the costs
 f furniture and equip-
 ent, travel costs, pro-
 ram Councils, tech-
 ology, and the use of
 mobile teaching van.
 After the question of
 e closing of the
 hreiber Campus, the
 econd most conten-
 us issue addressed by
 e Allan Report was the
 oard's Housing Policy.
 ust as the proposal to
 ose the high school
 ilding had Schreiber
 p in arms, the proposal
 sell all the Board's
 ousing had Manitou-

wadge up in arms. The
 newly elected board has
 reversed the previous
 Board's decision to sell
 the housing and had
 introduced a new Hous-
 ing policy. In its Respon-
 se the Board says, "The
 Commissioner recom-
 mended that the Hous-
 ing Policy be reviewed
 and revised accordingly.
 The Trustees have taken
 that recommendation
 under advisement and
 the Housing Policy has
 been revised. The prob-
 lems associated with en-
 suring that adequate
 housing is available in
 order to attract and to
 retain professional staff
 is an on-going one.
 Again we concur with
 the Commissioner that
 the Ministry of Northern
 Affairs might well con-
 sider this an area where
 they might become in-
 volved."

In the conclusion to its
 Response the Board
 says, "It is our hope
 therefore that the Min-
 ister will give serious
 attention and considera-
 tion to the recommenda-
 tions of the Commis-
 sioner, and will subse-
 quently act promptly
 and effectively to ensure
 that the existing edu-
 cational inequities ex-
 periened by students in
 the north are eliminat-
 ed. Equality of educa-
 tional opportunities
 should be available to all
 students in the Pro-
 vince of Ontario. Living
 in a primary resource
 community in the north
 should no longer be an
 educational liability to
 students."



QUALITY meats

FINE PRODUCTS FROM MAPLE LEAF



Maple Leaf, store packed,
 random weight

SMOKIES

1.99 lb. / **4.39** kg.

Maple Leaf, boneless,
 try Breaded or stuffed

CHICKEN BREASTS

3.99 lb. / **8.80** kg.

Maple Leaf, by the piece,
 random weight

SLAB BACON 1.99 lb. / **4.39** kg.

Maple Leaf, butt or shank, random weight

HAMS 1.79 lb. / **3.95** kg.

Maple Leaf, 500 gram pkg.

WIENERS **1.39** ea.

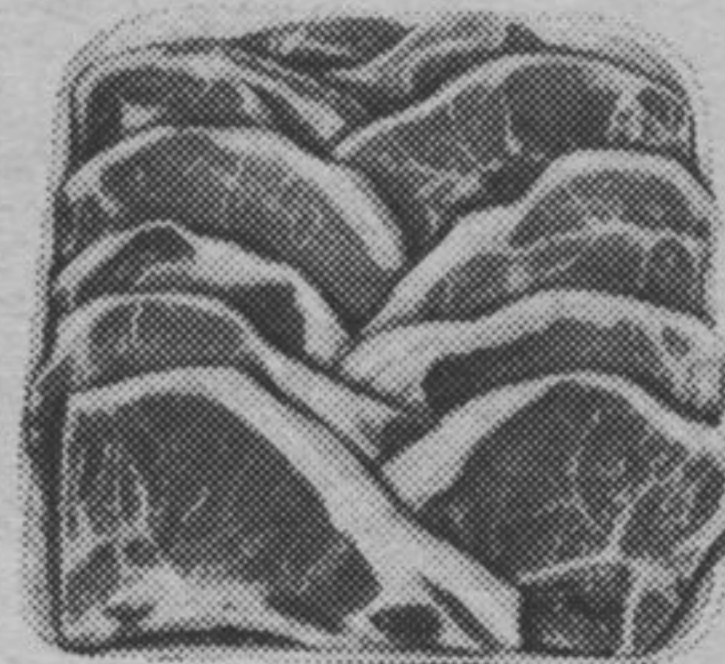
Maple Leaf, 500 gram pkg.

BACON **2.29** ea.

Family pak, 9 - 11 per pkg.

PORK CHOPS

1.79 lb. / **3.95** kg.



Foodmarket, medium

GROUND CHUCK 1.89 lb. / **4.17** kg.

Tender and small

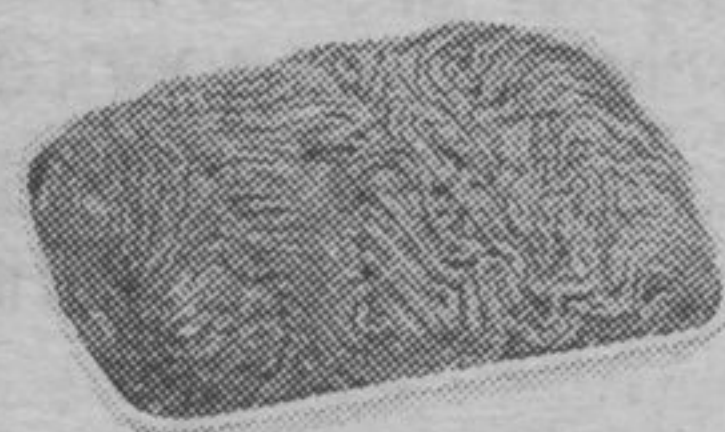
BABY BEEF LIVER79 lb. **1.74** kg.

Boneless, waste free

RUMP OR SIRLOIN TIP ROAST 2.58 lb. / **5.69** kg

Boneless, great on a grill

SIRLOIN TIP STEAKS 2.88 lb. / **6.35** kg.



Foodmarket quality

GROUND BEEF

1.18 lb. **2.60** kg.

July Food

1/2 Kraft, assorted, 250 ml. bottles
SALAD DRESSINGS **.99**

Kraft, 200 gram
MACARONI & SALAD MIX **.49**

Allen's 48 oz. tins assorted
FRUIT DRINKS **.99**

Libby's, 398 ml, cream style
CORN **2/1.49**



pure pork luncheon meat
 12 oz. tin
KLIK
1.69

plain or meat, Bravo, 398 ml
SPAGHETTI SAUCE **.69**

Hills Bros. 370 g.
COFFEE **2.69**

Generic, 400's
SERVETTES **2.79**

ex-soft, Generic, 4 roll pkg.
BATHROOM TISSUE **1.49**

Heavy duty, 12 litre
 Sunlight

DETERGENT

7.99

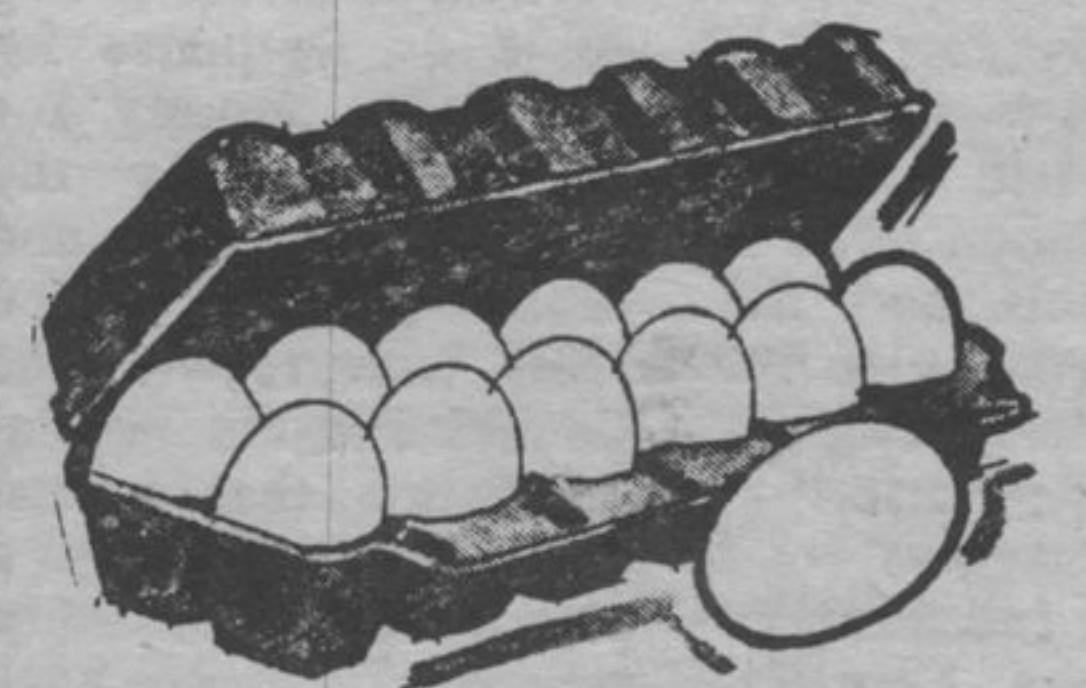


Hi-Dri, 2 roll pkg.
PAPER TOWELS **.99**

Kraft, 455 ml
BBQ SAUCE **1.29**

Kleenex, 200's
FACIAL TISSUE **.88**

Chef, 18" X 25"
FOIL WRAP **1.89**



Fresh, Grade "A" Large
EGGS **1.29** dozen

E.W. (Ted) Paget

B.Sc., B.Ed., LL.B.
 Barrister & Solicitor

SIMCOE PLAZA
 Terrace Bay, Ontario
 Tel: 825-9379

AMETHYST GEM FESTIVAL

FREE ADMISSION FREE PARKING

Sat. and Sun.
July 16 & 17

10:00 a.m. - 6:00 p.m.

COMMUNITY CENTER
 HWY. 11-17
 PEARL, ONTARIO

A 45 minute drive east of Thunder Bay

- Demonstrations
- Unique Souvenirs
- 'Pickin Pile'
- Specimens
- Boutiques ...
- Snack Bar
- Films
- Camping near by
- Music, Entertainment
- Childrens Playground

TOM-BOY FOODS

