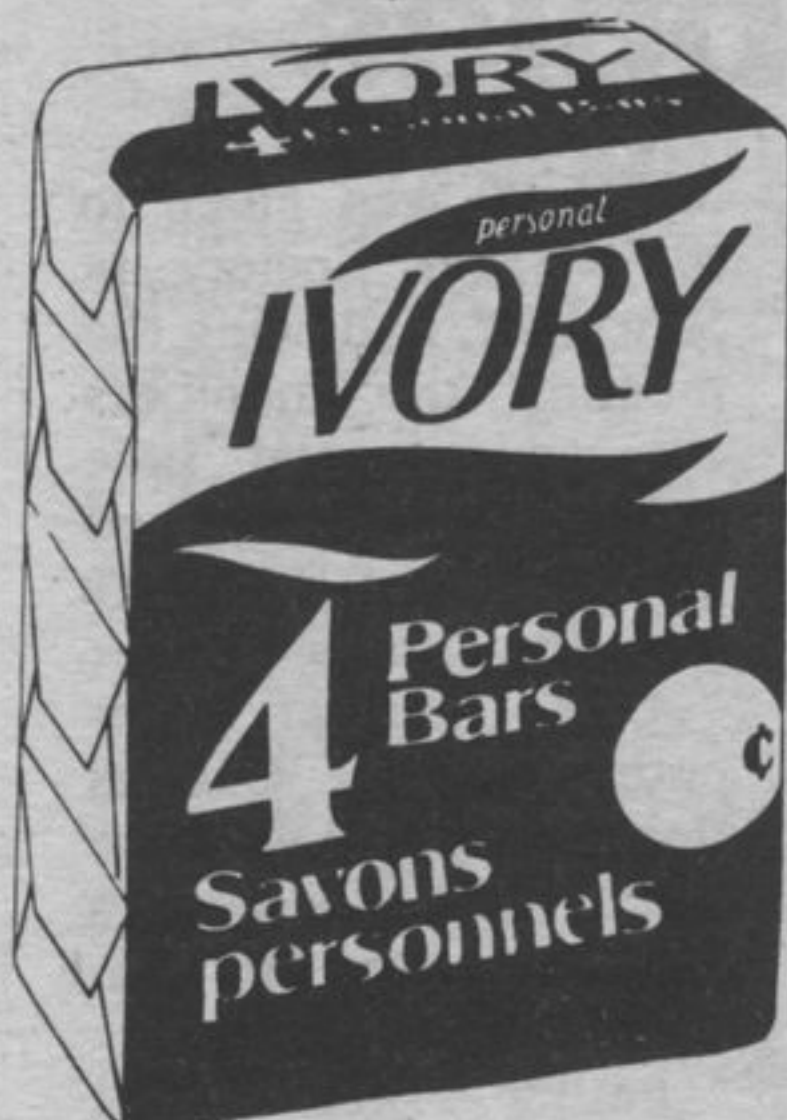


**BER
MOTHER**
ON HER DAY - MAY 8th

**eat out WE HAVE ALL THE
COOKOUT FIXIN'S!**

- Shaw's White & 100% Whole Wheat 24 oz. **BREAD**..... **85¢**
- Farm Fresh large per doz. **EGGS**..... **1.25**
- pkg. of 18 **MR. FREEZE**..... **1.39**
- Betty Crocker 510 gram **CAKE MIX**..... **1.29**
- Assorted Co op 400 gram **COOKIES**..... **1.49**
- Goodhost 750 gram tin **ICE TEA**..... **2.99**
- General Mills 350 gram **STRAWBERRY SHORTCAKE CEREAL**..... **1.99**
- Dry Dog Food 8 kg. **LASSIE**..... **7.99**
- Fabric Softener 3 litre **DOWNEY**..... **3.99**
- Blue Ribbon 1 lb. pkg. **COFFEE**..... **2.49**
- Romi 14 oz. bottle **SPAGHETTI SAUCE**..... **99¢**
- Sunspun 1.36 litre **TOMATO JUICE**..... **99¢**
- Sunspun 1.36 litre **APPLE JUICE**..... **99¢**
- Libby's creamstyle 398 ml. tin **CORN**..... **2/1.29**
- China Lily 19 oz. tin **BEAN SPROUTS**..... **79¢**
- Sunspun 3 litre **VEGETABLE OIL**..... **3.99**
- Nestle pkg of 4 **MINI PUDDING**..... **1.69**
- Hi Dri 2 roll pkg. **TOWELS**..... **1.39**
- Outside, pkg. of 10 **GARBAGE BAGS**..... **1.29**
- Gillette pkg. of 5 **TRAC II BLADES**..... **2.19**

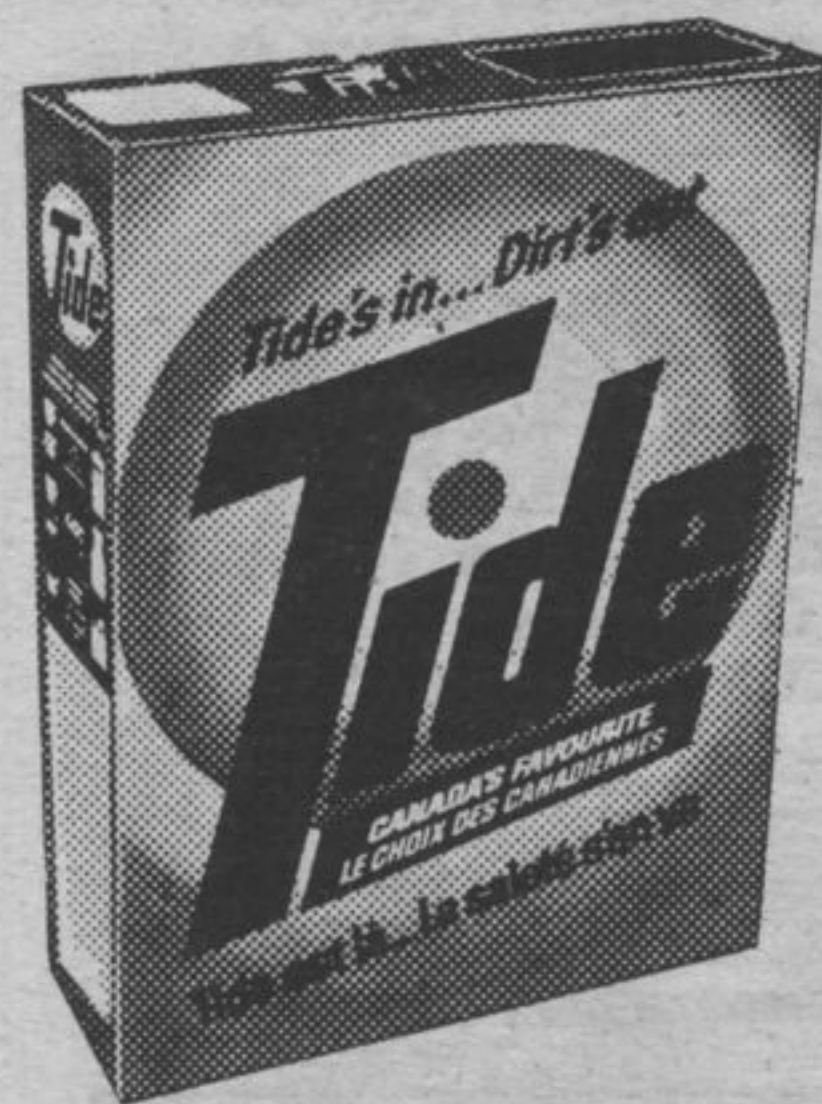


Bar Soap personal size 4 bar bundle

IVORY
1.29

Heavy Duty 12 litre

TIDE
8.99



FROZEN FOODS Specials

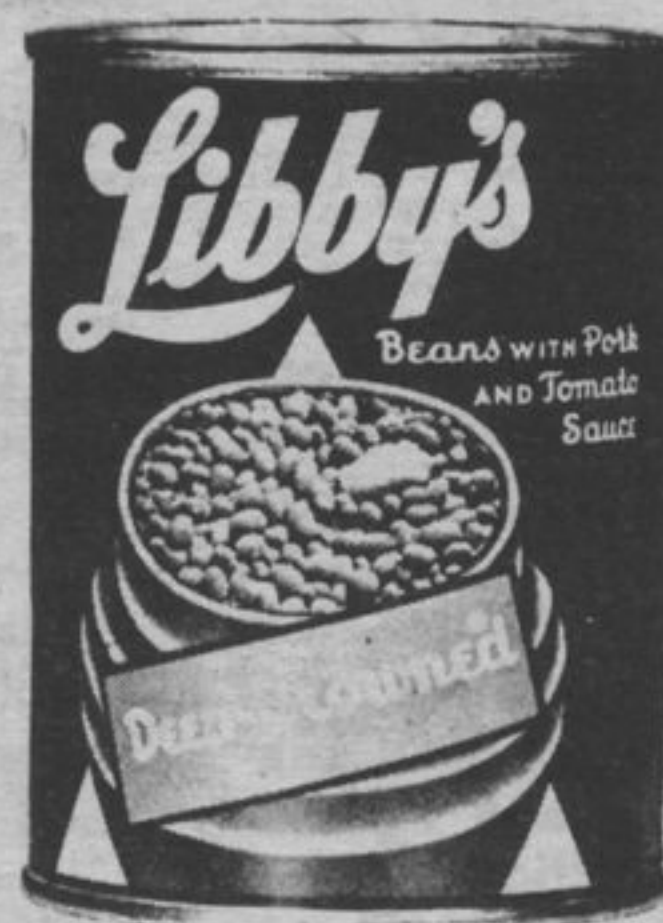


- Modern, 4 litre pail **ICE CREAM**..... **4.49**
- No Name 12 1/2 oz. tins **ORANGE JUICE**..... **79¢**
- Sunspun 1 kg. bag **PEAS**..... **1.69**

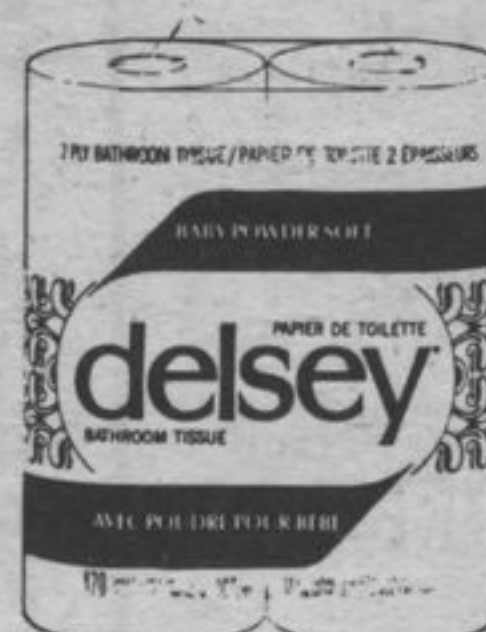
Sunspun Stems & Pieces 10 oz. tin
MUSHROOMS
69¢



Zing 10 oz. tins case of 24 tins
CANNED POP
4.99
2 cases with every \$15.00 orders



Libby's 14 oz. tin
PORK & BEANS
3/2.09



Delsey 4 roll pak
TISSUE
1.89

**Terrace Bay in medals
at Scarboro competition**

The Terrace Bay Figure Skating Club closed the 1982-83 skating season on a high note April 24. Six skaters travelled by train to Toronto to compete in the Scarboro Skate Invitational Competition on April 22-24. Congratulations to the following skaters:

- Mark Saranpaa / Jodi LeBlanc - 2nd Pre-Novice Dance Pairs
- Mark Saranpaa / Jodi LeBlanc - 4th Novice Dance Pairs
- Jennifer Kodila - 2nd Senior Silver Ladies Flight B
- Jennifer Kodila - 3rd Senior Silver Ladies Finals
- Paula Bouchard - 5th Senior Silver Ladies Flight A
- Heather Saranpaa - 13th Senior Silver Ladies Competitive
- Tracy Clark - 7th Senior Bronze Ladies Flight C
- Karin Brassard - 9th Senior Bronze Ladies Flight B

The competition ended Sunday evening with an exciting performance by Vern Taylor, former Canadian men's champion.

On March 26, 119 skaters representing 10 clubs, appeared before high test judges at the Terrace Bay arena. Congratulations to the following Terrace Bay skaters who successfully passed the following tests:

- Jennifer Kodila - 4th Figure
- Betty Hopper - Prel. Figure
- Karin Brassard - European & Foxtrot
- Cathy Hansen - European & Foxtrot
- Kim McColeman - Dutch Waltz
- Tracy Clark - American Waltz

The Terrace Bay Figure Skating Club will hold their annual banquet on Sunday, May 15 at the Moose Hall. The Annual Meeting will be held on May 19 in the Recreation Centre.

NOTICE

Blue Cross "Pay Direct" Non-Group Coverage Available To All Ontario Residents Until May 15, 1983.

Blue Cross announces that it is making available to all Ontario residents during the period April 1 to May 15, 1983, a wide range of health benefits not included in the government sponsored Ontario Health Insurance Plan (OHIP).

Between April 1 and May 15, 1983, any Ontario resident, regardless of age or previous medical history can purchase Blue Cross coverage on a "pay-direct" basis for the major portion of the cost of such benefits as

- prescription drugs
- private duty registered nursing
- use of semi-private and private room in hospital; and others.

Ontario Blue Cross is a private, non-government organization.

If extra health coverage is not available to you through your place of employment, consider this Blue Cross "pay direct" opening.

Detailed brochure/application forms are available at the "Infocentre" at most Ontario supermarkets, at regional offices of the provincial Ministry of Northern Affairs, or by writing

1983 Pay Direct Opening
Ontario Blue Cross
150 Ferrand Drive
Don Mills, Ontario
M3C 1H6

OWNED & OPERATED BY THE FIGLIOMENI FAMILY
SCHREIBER FOODMARKET LTD.

Free Daily Delivery to Schreiber and Terrace Bay • 824 2599 • (Butcher Shop) 824 2037

