

Letter to the editor

(Reprinted from the Manitowadge Echo)

Dear Editor:

Re: Closure of the Schreiber Campus

It is sad and worrisome to see such lack of care for the young people of our four communities coming from those five trustees of the Lake Superior Board of Education who are opposing the maintenance of the Schreiber Campus of Lake Superior High School UNLESS the Minister of Education first commits to provide the funding.

In other words this move purports to FORCE a Minister of the Government of Ontario to decide whether or not a local school should remain in operation. As Bette Stephenson herself has often said, this is not the role of the Minister of Education. She cannot, and will not, be placed in such a position. It is the role of the Lake Superior Board of Education to make its decision and then to request that the Minister support the move as per the Rodger Allan Report.

Surely, the dissenting FIVE know the Minister's position. Yet they insist upon taking this naive and dangerous approach which would end up destroying the local High School Campus in the township of Schreiber. Last year they claimed that such a closure would realize a saving, then estimated at \$119,000 per year. Very little mention was made of the close to a million dollars that would have to be spent to upgrade the Terrace Bay High School. Now these five (the remnant of last year's majority of ten) are saying that our taxes will rise drastically if the Schreiber High School is kept open. Can you imagine how much they would rise if their plan of spending over one million dollars had been followed?

It is true that Manitowadge Residents pay the highest property taxes in the system. Your Committee on Responsible Education (CORE) has questioned the four other Manitowadge Trustees and found that they are concerned about that issue. However, they also point out that the problem can only be alleviated if all four communities involved agree to participate in an equalization process.

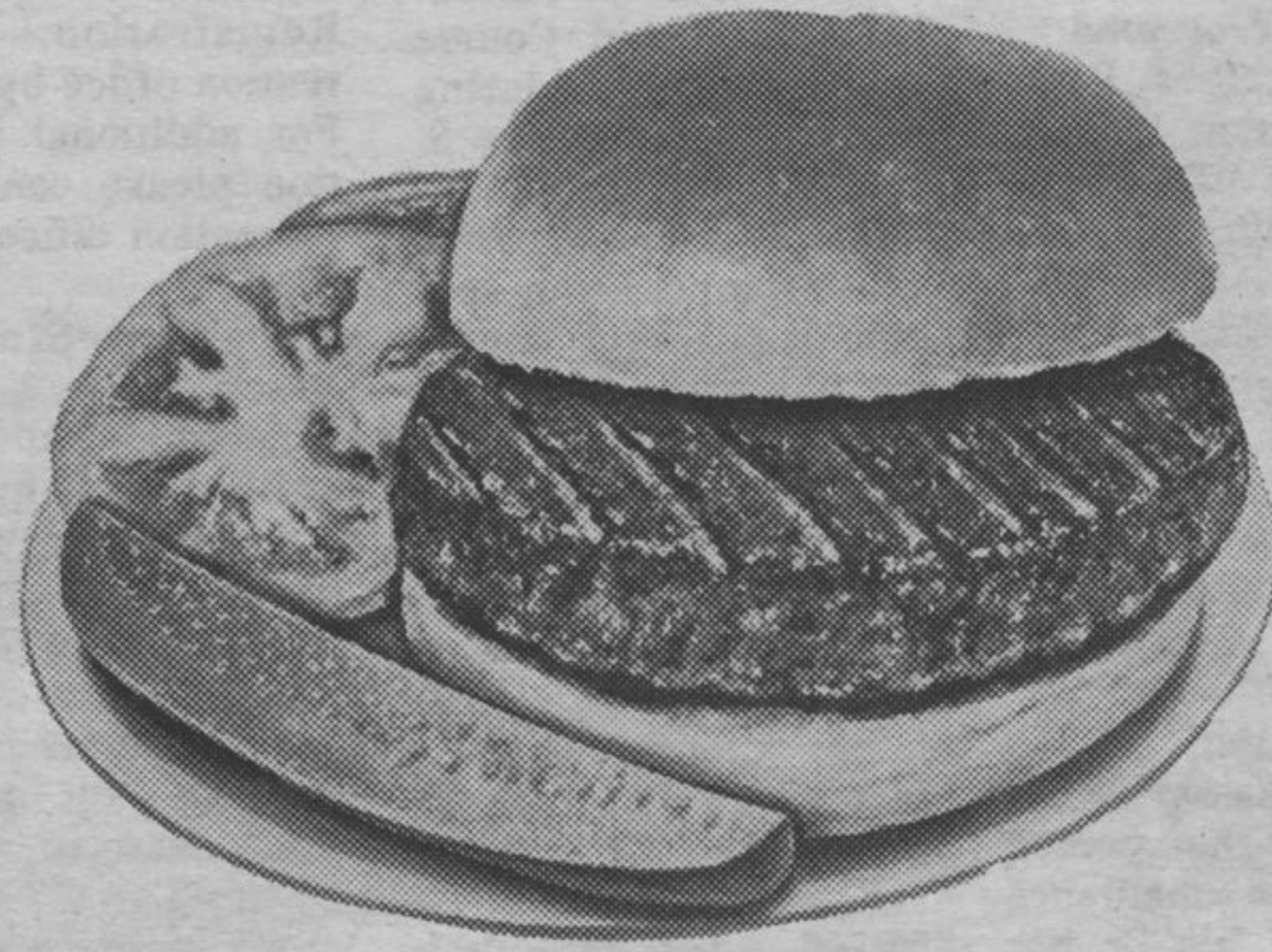
Obviously, and understandably, the Township of Schreiber would refuse to participate if it may end up without its local education at the primary and secondary levels. The majority of our trustees are working towards making tax equalization a reality — only one is regrettably working against it through the stand taken concerning the Schreiber Campus of the Lake Superior High School.

Further, CORE has confirmed that the majority of your trustees in Manitowadge is firmly committed to the concept of local education in each community.

Four out of five will fight for that principle over and above other issues. Their intent is to determine such a provision of education and then to seek out the funding. As some of our local trustees have said, if one school is closed to save money how long will it take to need more

continued on page 10

WE SELL only A-1 BEEF... THE BEST



Regular, None Better
GROUND BEEF
1¹⁹ lb. **2⁶²** kg.

Medium, The Best
GROUND BEEF
1⁸⁹ lb. **4¹⁶** kg.

Boneless, from Grade "A" Beef

RUMP ROASTS or
sirloin tip..... **2⁶⁹** lb. **5⁹²** kg.

Beef from the Hip
MINUTE STEAK..... **2⁹⁹** lb. **6⁵⁸** kg.

Family Pak
PORK LOIN CHOPS... **1⁶⁹** lb. **3⁷³** kg.

7-Farms 500 gram
BACON..... **2²⁹**

7-Farms 1 lb. pkg.
WIENERS..... **1³⁹**

Schneiders
KIELBOSSA
SAUSAGE..... **2⁹⁹** lb. **6⁵⁹** kg.

Schneiders 375 gram
HEADCHEESE..... **1⁷⁹**

Schneiders Assort 250 gram

SLIM STICKS..... **1⁹⁹**

Schneiders 900 gram

CHICKEN IN A BUCKET..... **4⁹⁹**



Boneless from Grade A Beef
SIRLOIN TIP STEAKS
2⁶⁹ lb. **5⁹²** kg.

Shank or Butt, Fresh No. 1
centre cut

LEGS OF PORK..... **1³⁹** lb. **3⁰⁶** kg.

Boneless cube from Grade A Beef

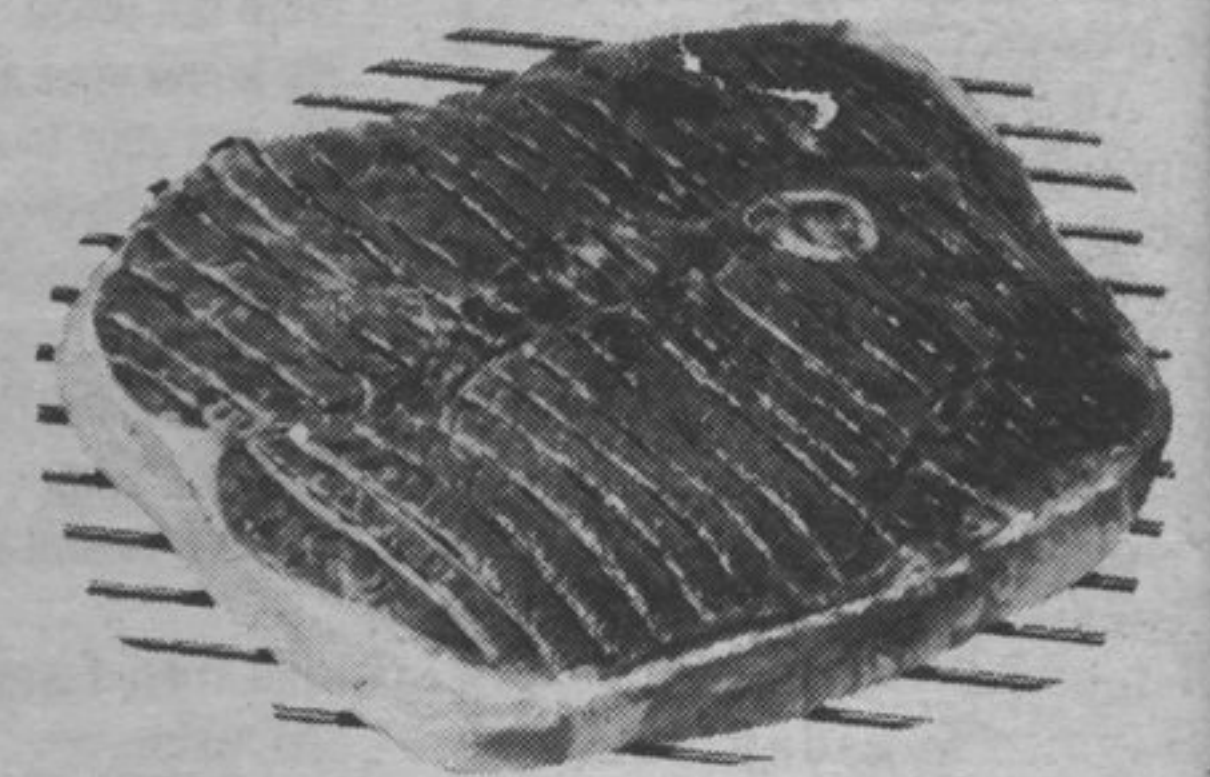
STEW BEEF..... **2¹⁹** lb. **4⁸³** kg.



Fresh 10 lb. box
CHICKEN
LEGS
11⁹⁹

Boneless, cut from
Grade "A" Beef,
full slices

ROUND
STEAKS
2⁶⁹ lb. **5⁹²** kg.



PRODUCE WE SELL ONLY THE FRESHEST

Ontario macs Canada No. 1,
3 lbs.

APPLES..... **1⁶⁹**

Golden Yellow
BANANAS..... **39¢** lb.

Pink 56's
GRAPEFRUIT..... **10/1⁴⁹**

Navel 88's

ORANGES..... **39¢** lb.
case of 40 lbs..... **14.95**

Fresh Roasted Bulk
PEANUTS IN SHELLS **1¹⁹** lb.

Ontario No. 1, 5 lb. bag
CARROTS..... **1³⁹**

California No. 1

LETTUCE..... **69¢** ea.

Fresh 4 bunches
GREEN ONIONS..... **99¢**

Ontario 10 lb. bag
POTATOES..... **1²⁹**

**THE LAKE SUPERIOR
BOARD OF EDUCATION**
announces



EARLY REGISTRATION

for

SR. & JR. KINDERGARTEN

for

TERRACE BAY PUBLIC SCHOOL

Eligibility:

Sr. Kindergarten - Children who will be 5 years old
by December 31, 1983.

Jr. Kindergarten - Children who will be 4 years old
by December 31, 1983.

Note: Students currently attending Jr.
Kindergarten need not re-register for
Kindergarten.

Registration will be taken in the school office
beginning Monday, May 9 through Friday, May 13.
Please bring your child's proof of age. A special
information session, for parent(s) and child, will
be held on Wednesday, May 11 at 1:30 p.m. in the
library.

For further information, please call: 825-3253.

D. Davey,
Principal.

M. Reid,
Chairman

M. Twomey,
Director

TOM-BOY FOODS

