

Monday, December 11th

- 1:00 - 3:00 Public Skating
- 4:15 - 6:15 Figure Skating
- 6:15 - 7:15 Peewees
- 7:15 - 8:15 Bantams
- 8:15 - 8:35 Scrape & Flood
- 8:35 - 10:45 Midgets
- 11:00 - 12:00 Senior Hockey

Tuesday, December 12th

- Ice Maintenance
- 4:30 - 5:15 Mites
- 5:15 - 6:15 Atoms
- 6:15 - 6:30 Scrape & Flood
- 8:45 - 11:00 Intermediates
- 11:15 - 12:15 Schreiber

Wednesday, December 13th

- 1:00 - 3:00 Public Skating
- 4:15 - 6:15 Figure Skating
- 6:15 - 7:15 Peewees
- 7:15 - 8:15 Bantams
- 8:15 - 8:35 Scrape & Flood
- 8:35 - 10:45 Midgets

The above arena schedule is subject to unavoidable change.

The Royal Canadian Legion

Terrace Bay Branch 223

NEW YEAR'S EVE FROLIC

SUNDAY, DECEMBER 31ST - 9 p.m. - 1 a.m.

MUSIC BY: Red Rock Band

For Legion Members & Guests Only

\$30.00 per couple \$15.00 per single
(includes Dance - Lunch - Refreshments)

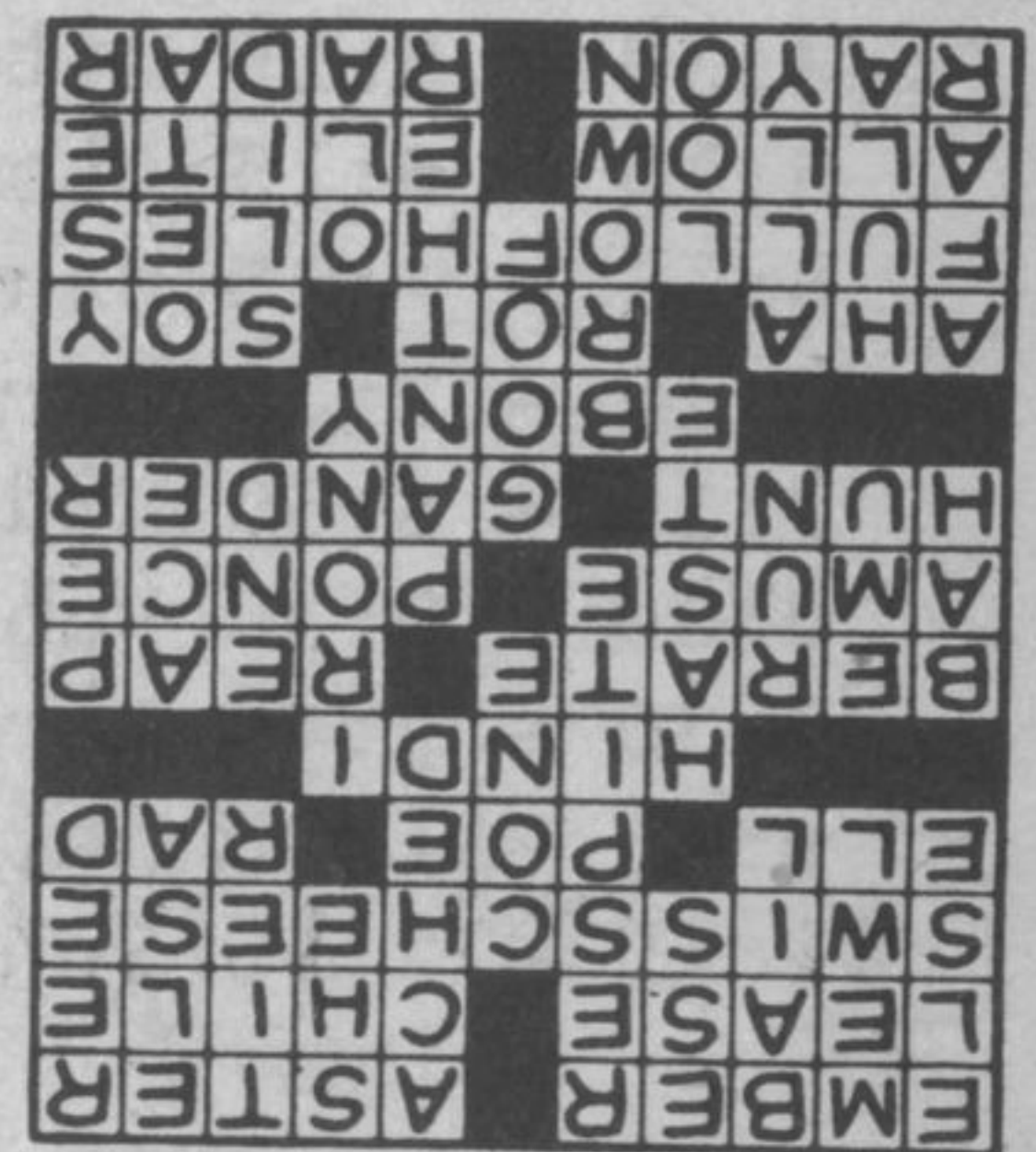
Limited number of tickets available

From: G. Churney, C. Koski,
Betty Bouchard & Legion Bar

FIRST COME - FIRST SERVED BASIS

CROSSWORD PUZZLE

TODAY'S ANSWER



- | | |
|-----------------------|----------------------------|
| ACROSS | DOWN |
| 1 Hot coal | 1 Instead |
| 6 Flower | 2 Whimper, |
| 11 Tenant's contract | as an infant |
| 12 Santiago's country | 3 Kettle handle |
| 13 Alpine product | 4 Ending for lion |
| 15 House wing | 5 Temporary relief |
| 16 American author | 6 Felt poorly |
| 17 Energy unit | 7 That girl |
| 18 An Indian language | 8 Row of seats |
| 20 Scold | 9 Name for a lioness |
| 23 Gather in | 10 Rex or Donna |
| 27 Entertain | 14 Ice cream container |
| 28 Puerto Rican city | 18 Celerity |
| 29 Ride to the hounds | 19 Satire |
| 30 Quick look | 20 Exclamation of contempt |
| 31 Dark wood | 21 Australian bird |
| 33 Gotcha! | 22 Oversee |
| 36 Stuff and nonsense | 24 Finale |
| 37 Sauce with tempura | 25 Tennis point |
| 40 Like 13 Across | 26 By means of |
| 43 Permit | 28 Leopard |
| 44 Select group | 30 Blunder |
| 45 Synthetic fabric | 32 Harpers Ferry raider |
| 46 Burghoff TV role | 33 Distant |
| | 34 Waikiki dance |
| | 35 Associate |
| | 37 Skidded |
| | 38 Greek mountains |
| | 39 Belgian river |
| | 41 Card game |
| | 42 Palm leaf |



"I didn't lose my mommy - I lost my credit card!"