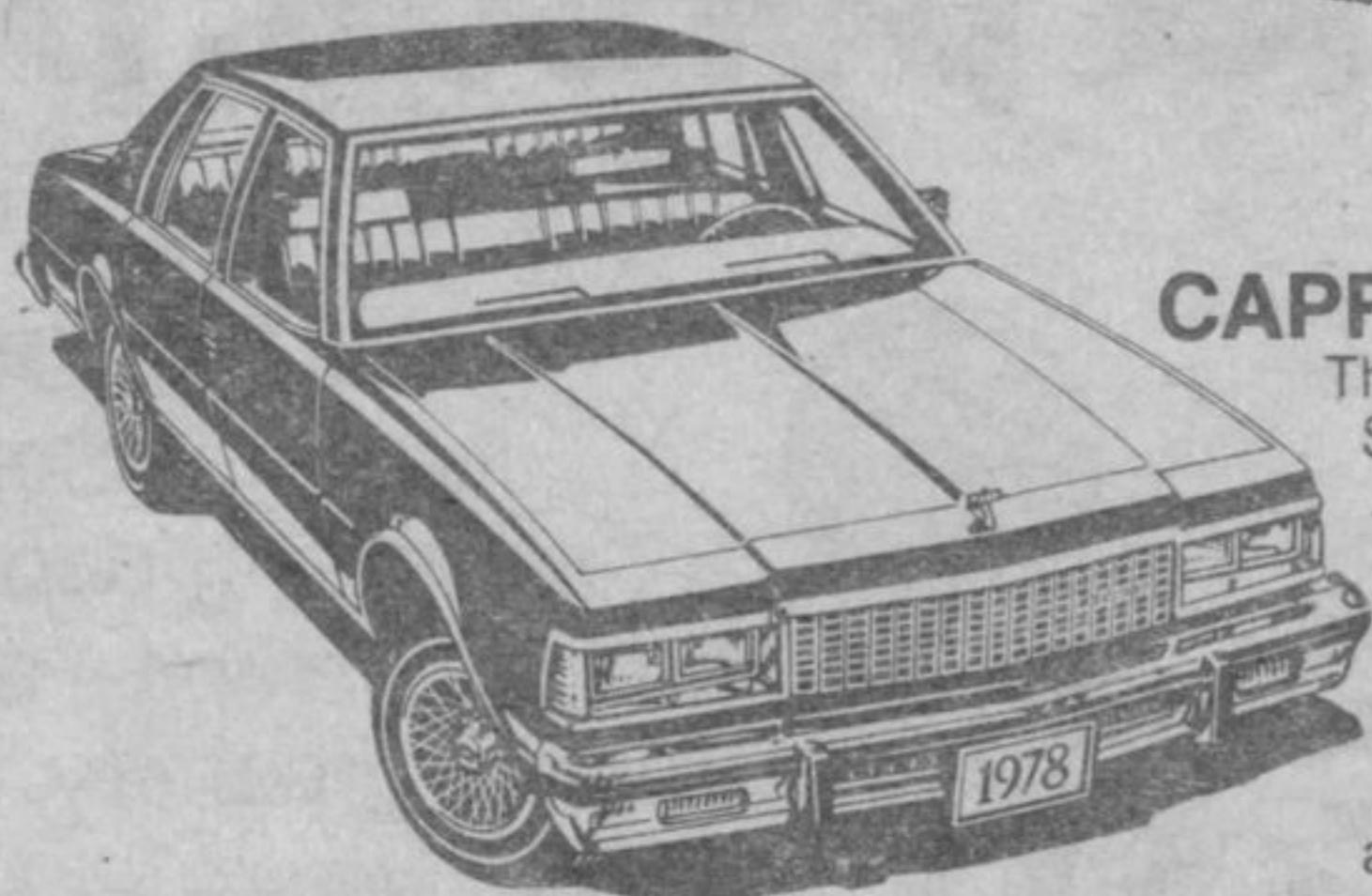


Spadoni Bros. Ltd. SEE WHAT'S The New 1978 Chevrolets



MONTE CARLO

The Evolution of Beauty. See the third generation of the original personal luxury car. 36 km/g (22 mpg) city, 50 km/g (31 mpg) highway, with an available 2-bbl. 5.0 litre (305 cu. in.) V-8 engine with available automatic transmission and 2.29 axle ratio.*



CAPRICE CLASSIC

That's *much* more like it. Still Canada's favourite full-size car. 32 km/g (20 mpg) city, 47 km/g (29 mpg) highway, for an available 2-bbl. 5.0 litre (305 cu. in.) V-8 engine with automatic transmission and 2.41 axle ratio.*



MALIBU

The age of inner space. Presenting Malibu for 1978. 37 km/g (23 mpg) city, 52 km/g (33 mpg) highway with a 2 bbl., 3.3 litre (200 cu. in.) V-6 engine with available automatic transmission and 2.73 axle ratio.*



NOVA

Honest to goodness. Still a sensible buy in '78. 36 km/g (22 mpg) city, 51 km/g (31 mpg) highway, with a 1-bbl. 4.1 litre (250 cu. in.) L-6 engine with a 3-speed manual transmission and 2.73 axle ratio.*



MONZA

Four more models in '78. The North American compact sports car. 36 km/g (23 mpg) city, 65 km/g (40 mpg) highway, with an available 2-bbl. 3.2 litre (196 cu. in.) V-6 engine with an available 5-speed manual transmission and 2.73 axle ratio.*



CHEVETTE

2 more doors, 18 new standard features. It'll drive you happy. 60 km/g (37 mpg) city, 78 km/g (48 mpg) highway, with a 1-bbl. 1.6 litre (98 cu. in.) L-4 engine with a 4-speed manual transmission and 3.70 axle ratio.*



CAMARO

A little fun. A lot of sport. And this year new front and rear styling. 35 km/g (22 mpg) city, 52 km/g (32 mpg) highway, with a 1-bbl. 4.1 litre (250 cu. in.) L-6 engine with a 3-speed manual transmission and 2.73 axle ratio.*



SPADONI BROS. LTD.

YOUR **GM** DEALER

SERVING THE NORTH SHORE
SCHREIBER, ONTARIO

CALL DAVE
824-2304
RESIDENCE
824-2723

CALL LARRY
824-2043
RESIDENCE
824-2421