

Terrace Bay-Rosspport-Schreiber
Citizen Band
General Radio Service Club



The first meeting of the season of the T.R.S. Citizen Band General Radio Service Club will be held in the Terrace Bay Recreation Centre on September 20th, 1977, at 7:30 p.m.

All current members and any new members wishing to join are requested to attend. All unpaid memberships are due at this meeting and cards will be issued on receipt of your dues or on showing of receipt.

DES Idées



POUR DE L'ASSURANCE-VIE ET ARGENT REMIS

Préparez conjointement la protection de votre famille et un programme d'épargne garantie! La police Sun Life Dotation fonds de sécurité pourvoit à de l'assurance-vie jusqu'à ce que vous atteigniez l'âge de 65 ans — et vous rembourse alors toutes les primes, plus les dividendes. C'est un placement judicieux dont j'aimerais vous dire un mot.

Get your life in shape.
SunLife
OF CANADA

CLAUDE P. LEPINE
Box 98, Terrace Bay
Phone 825-3613



mortgage financial services

- RESIDENTIAL
- COMMERCIAL
- FIRSTS AND SECONDS
- AGENTS FOR CANADA'S LEADING TRUST COMPANIES
- FAST COMMITMENTS

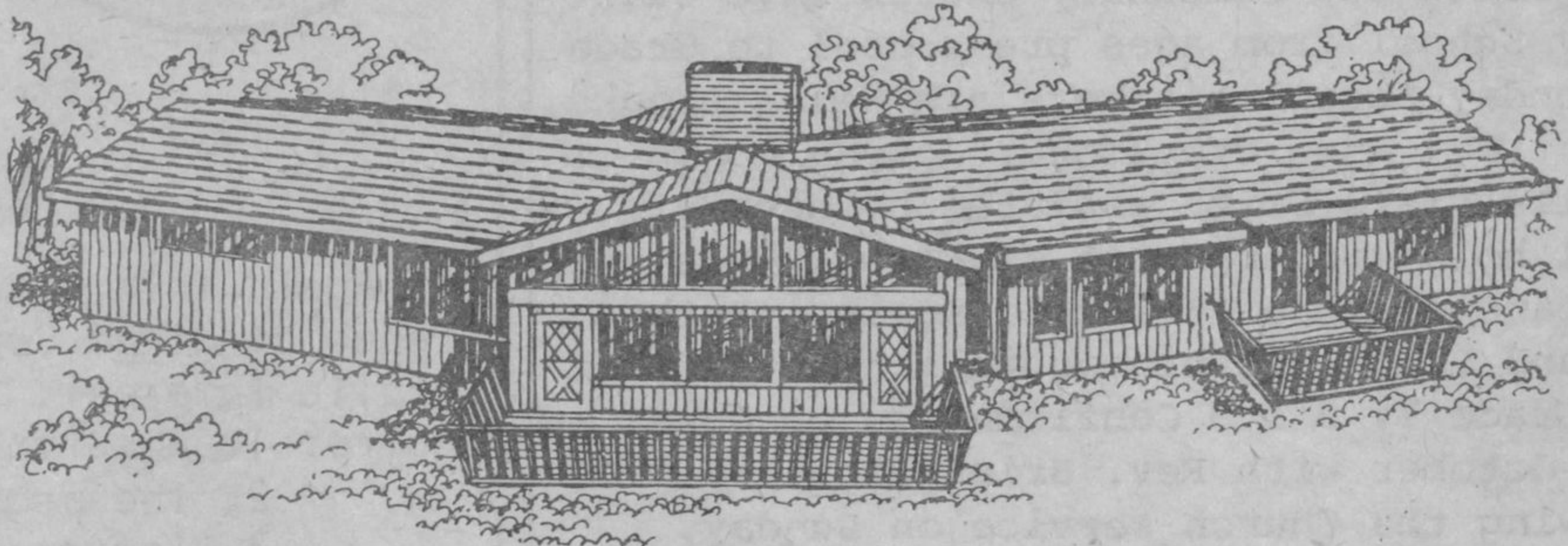
1 (807) 345-5141

DAVID A. BURNS

MORTGAGES: For purchasing a home, 5% down payment, 10% current rate. For refinancing we provide up to 90% of property value, for paying debts, investment, improvements or any worthwhile purpose. Commercial funds are available from 10 1/4%. We cover Thunder Bay and area from Kenora to Marathon. We are agents for Canada's leading insurance and trust companies. Call D.A. Burns Inc., Mortgage Financial Services, 345-5141 or 344-1769 anytime.

For appointments in Terrace Bay and for further information, please call the above numbers.

A central core with moveable wings.

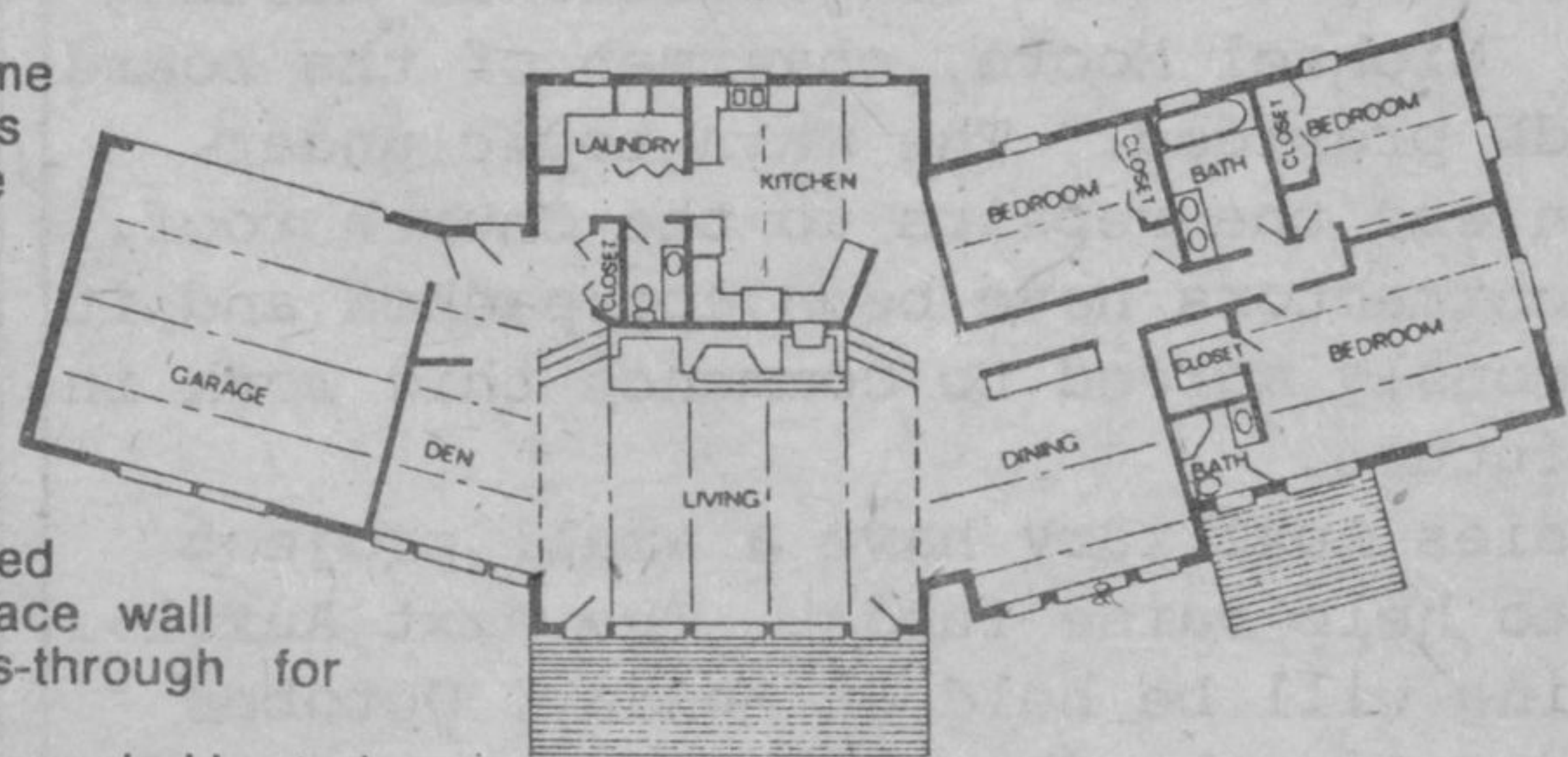


This single-story cedar-home design is as roomy as it is versatile—a welcome respite from today's mass of confining split-levels.

Ideal for the family that enjoys entertaining, its core or "center stage" features a spacious sunken living room with exposed beams and a huge fireplace wall (including a kitchen pass-through for hearthside snacks).

"Off-stage," one wing is occupied by an inviting entryway, a den and garage, while the other is devoted primarily to bedrooms. And both wings (the entire plan, in fact) can be tailored to suit individual needs. They might, for example, be joined at a sharper angle to accommodate a narrower lot.

All as a result of factory engineering and an unusually flexible building system. For more than 70 other applications, send \$2 for our Planbook.



Independently Distributed By

WELDON POST & BEAM LTD., R.R.#13,
590 Strathcona Ave. (Lakeshore
Drive) Thunder Bay, Ont. P7B 5E4
Phone 683-6281

Enclosed is \$2 for Planbook and design kit.

Mr. Ms. _____
Address _____
City _____ State _____
Zip _____ Phone _____

