

**Trade Show Bonus \$15,268 - July 27/77  
FOUR WINDS II - 1210 sq. ft. phase I**

648 Squier St.,  
Thunder Bay, P.  
344-0724

# ROSEDALE BUILDERS SUPPLY

## DID YOU MISS CANADIAN LAKEHEAD EXHIBITION

That's the reason we're holding over our C.L.E. deposit guarantees today's special price for a full 12 months. and a set of plans of your choice - your deposit is fully refundable should your project not materialize. Send \$1.00 for our color catalogue and price list - Arctic home construction at standard prices - standard homes 10% off. A small

## PACIFIC PREFAB

## ARCTIC HOMES THE ENERGY SAVERS



### ROSEDALE HAS

## Foam Form R20 insulation factor

**INSULATED CONCRETE FORMS FOR BASEMENT, COMMERCIAL AND RESIDENTIAL CONSTRUCTION - EASY TO BUILD WITH - ENERGY SAVING, CUT LABOUR COST - WE INVITE CONTRACTORS, DEVELOPERS AND DO-IT YOURSELFERS TO INQUIRE TODAY.**

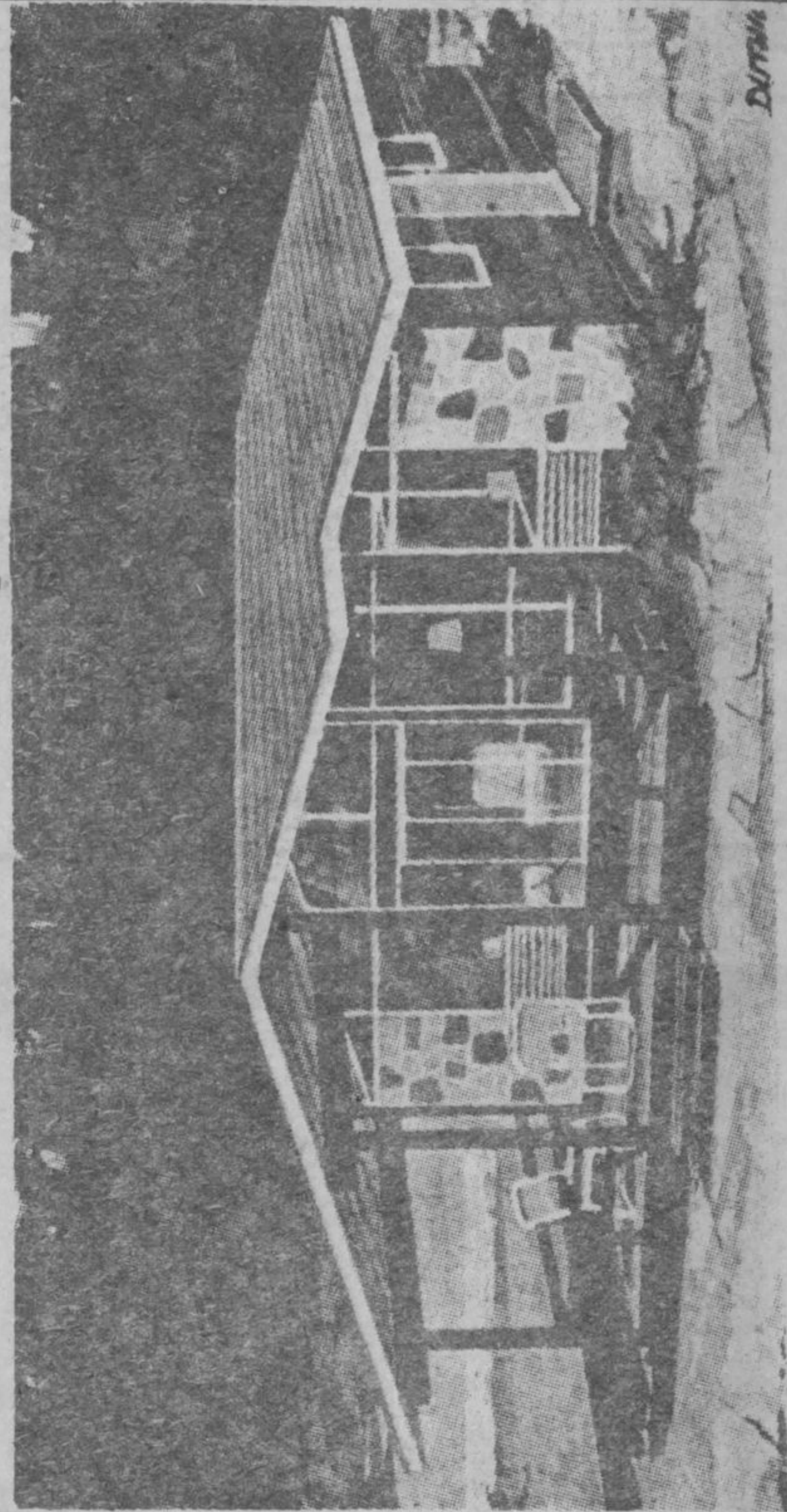
## STYROLITE INSULATED BLOCKS up to 20 in.

**Thick (many uses) floating docks, rafts, piers, houseboats or for insulation for commercial and residential buildings.**

**Phone ROSEDALE 344-0724**

## FLEX HEAT - HYDRO APPROVED

**Electric radiant heat - like having a glass ceiling with the sunshine pouring through - no dust, no fuss, each room can be thermostatically controlled. Costs less to operate, easily installed in new home construction. Call today.**



6 inch wall construction, R20 insulation factor.

9 1/2 inch Arctic ceiling, R32 insulation factor

Triple glazed windows - exceeds CMHC standards

39 exciting town and country homes, chalet designs, and cottages.

Financing available to up to 90%

*You can't afford not to see us before you decide on your dream house. Shop around, then talk to Rosedale*

**880 sq. ft. bonus price until July 27/77  
PARISIENNE as low as \$8,703 phase I**

Dunn