

ANNUAL HOSPITAL BALL PLANNED

The Auxiliary to the McCausland Hospital met February 21st, at the Schreiber High School.

Mary Stephen reported that tickets for the Bridge Set were going well and Flora Bryson indicated that Dominion Store slips for \$17,305.03 have been collected.

Beth McAdam made tray favours for Valentine's Day and is now working on St. Patrick's Day ones. The membership drive has been completed very successfully.

The Auxiliary has been requested to provide lunch and check memberships at the Annual Hospital Meeting, April 19th. The Auxiliary agreed to handle these requests.

Tuck Shop volunteer work is going well. Balance on hand, January \$695.92.

The Auxiliary decided to hold a Bake Sale in March in the Gymnasium of the Public School. Knitted articles will also be sold.

The Annual Hospital Ball to be held on May 7th, will be convened by Elaine Mannisto and Marg Gander.

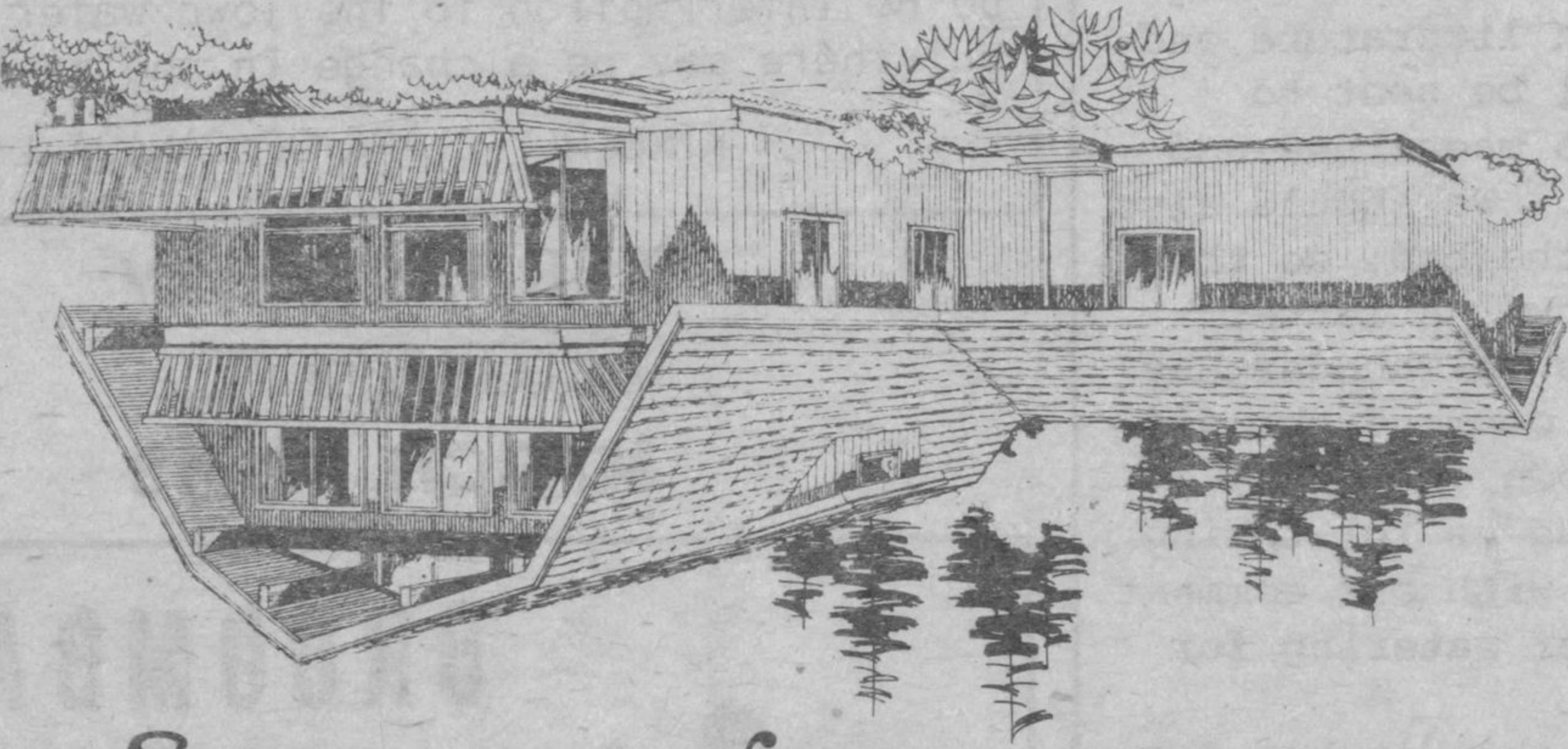
Helen Croll will order 125 tickets at \$15.00 per couple. The dance will be held at Terrace Bay High School.

The March 21st meeting will be held at St. Martin's School in Terrace Bay. All members are welcome.

GUIDING NEWS

Scout-Guide week was marked in Terrace Bay by the 23rd Annual Mother & Daughter Banquet for Brownies, Guides and Rangers held at the Moose Hall. The long tables were decorated with interesting and imaginative centre pieces created from stones, cones, birch bark and leaves. Each girl had made an original card for herself and her mother. After Colours from

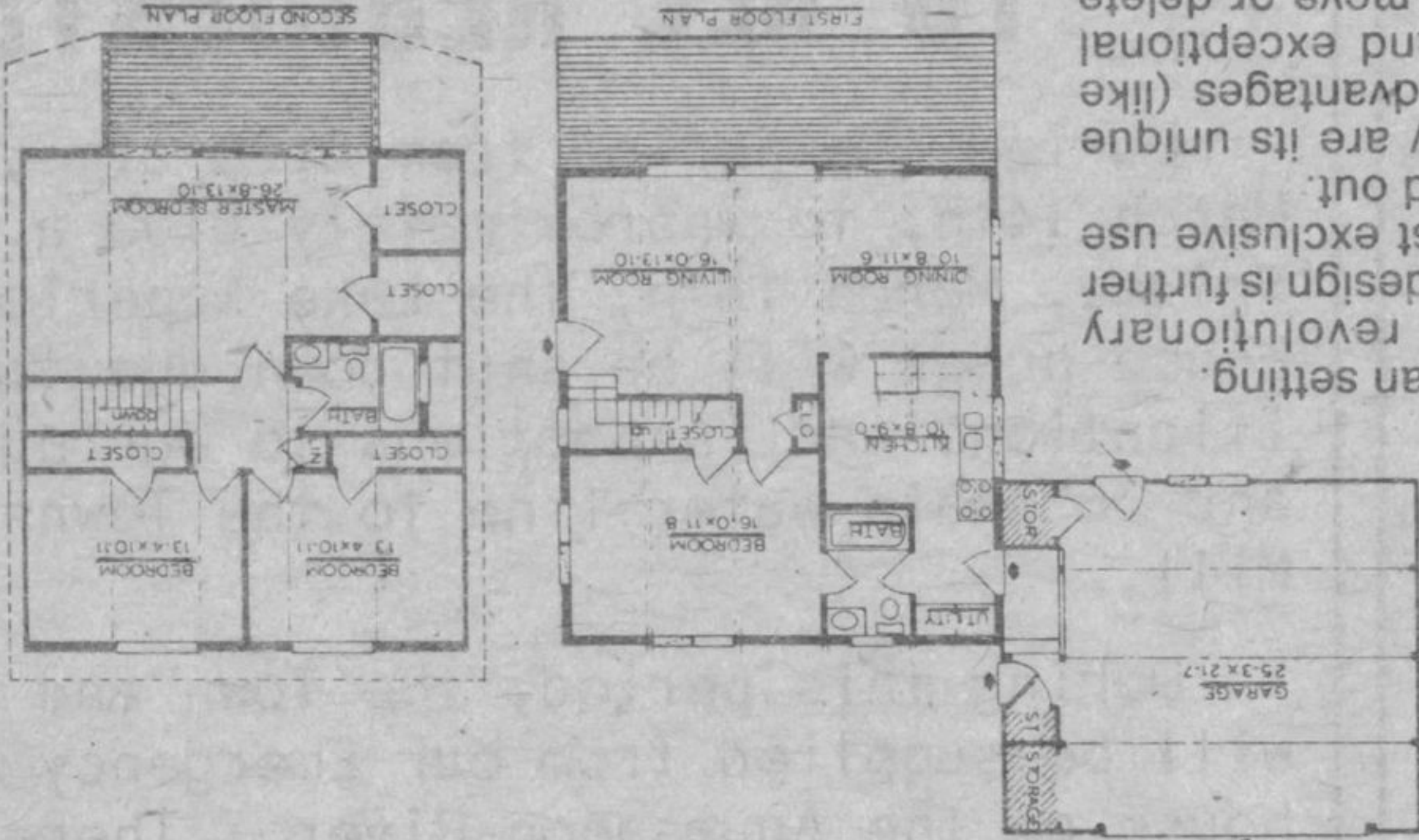
A revolutionary home design.



This economical two-story home turns its back to the street (or takes advantage of a view site) to create an uncommon sense of privacy even in a busy urban setting. Inspired by America's revolutionary period, its gambrel-roofed design is further distinguished by the almost exclusive use of natural cedar, inside and out. Even more revolutionary are its unique and enduring structural advantages (like steel-reinforced beams) and exceptional design flexibility. You can move or delete interior walls, add to its 1,615 sq. ft. or otherwise customize, as you wish. And it's a house that "comes to you" — in the form of a pre-cut structural package, ready for efficient assembly. For 4 adaptations of this plan, and 68 other designs, send \$2 for our Planbook.



Bringing nature home — made-to-order.



Independently Distributed By
WELDON POST & BEAM LTD.
R.R. NO. 13, LAKE SHORE DRIVE, THUNDER BAY, ONT.
P78 5E4 PH. 683-6642 172
Enclosed is \$2 for Planbook and design kit.

CODE _____ Phone _____
City _____ PROV. _____
Address _____
 Mr. Ms.

each group had been marched in, Master of Ceremonies, Judy Farrell called on Brownie Janet Pollard for the Toast to the Queen and Karl Guide Maureen Caldwell proposed the toast to the mothers and Mrs. Caldwell responded. A varied pot luck supper was enjoyed by all present with the Ladies of the Moose presiding over the kitchen. Following supper three guests (Mrs. Rita McBride, Mrs. Yolande Rajotte and Mrs. Doro-McBride, Mrs. Yolande Rajotte and Mrs. Doro-McBride, Mrs. Yolande Rajotte and Mrs. Doro-McBride) Longtime Local Association members were presented with Guide spoons in recognition of their long service. Mrs. Pam Jones, Guide Lieutenant was presented with her 10 Year Long Service Bar. Ranger Leader Mrs. Cathy Geldreich enrolled. Maureen Haas who had completed their six month attendance as Rangers. Entertainment was supplied by the 1st and 2nd Brownie Pack singing "I love to go a wandering" and taking everyone on a bear hunt.