

Hospital Building Fund - continued from pg. 5

Hospital Building Fund. It may be mailed or taken to the Hospital Administration Office-Birchwood Terrace (now downstairs!) Terrace Bay. Remember - your payment must be received by March 19th!

We are hoping for a large membership audience at the Annual Meeting. Your vote is important.

Building Fund Committee
and Public Relations.

"POP" CONCERT TO FEATURE NORM KRISTJANSON

Norm Kristjanson will appear in a repeat program. An evening with the Lowery Organ at the Recreation Centre on the 15th of March.

There will be no admission charge but we ask you call A. Almos 825-3828 to ensure that a seat is reserved for you.

Though young in years, Norm who hails from Thunder Bay is a veteran of numerous concert appearances and has added several numbers to his repertoire since his last appearance here.

As well as providing a stimulating musical experience for the uninitiated this program promises a treat for all who love the fascinating sound of the electric organ.

Playing on several models of Lowery Organs Norm will show how musicians as well as beginners can get the most out of today's advances in electronic organs.

If you like organ music don't miss this fine program.

WORLD DAY OF PRAYER HELD AT COMMUNITY CHURCH MARCH 4TH

Many ladies of all denominations attended and participated in the World Day of Prayer held at the Community Church on March 4th.

This year the Christian women of the German Democratic Republic prepared the program. Their theme "Love In Action", held warm love, and the hymn "Onward Christian People", which was written for the service had a quiet moment in it for each and every person.

The offering was sent to Womens Inter-Church Council of Canada.

Helen Brooks, Auxiliary President invited everyone to partake of the delicious tea, which was served afterwards in the Church Hall.



BEST SELECTION OF

L.P.'S &

8 TRACK TAPES

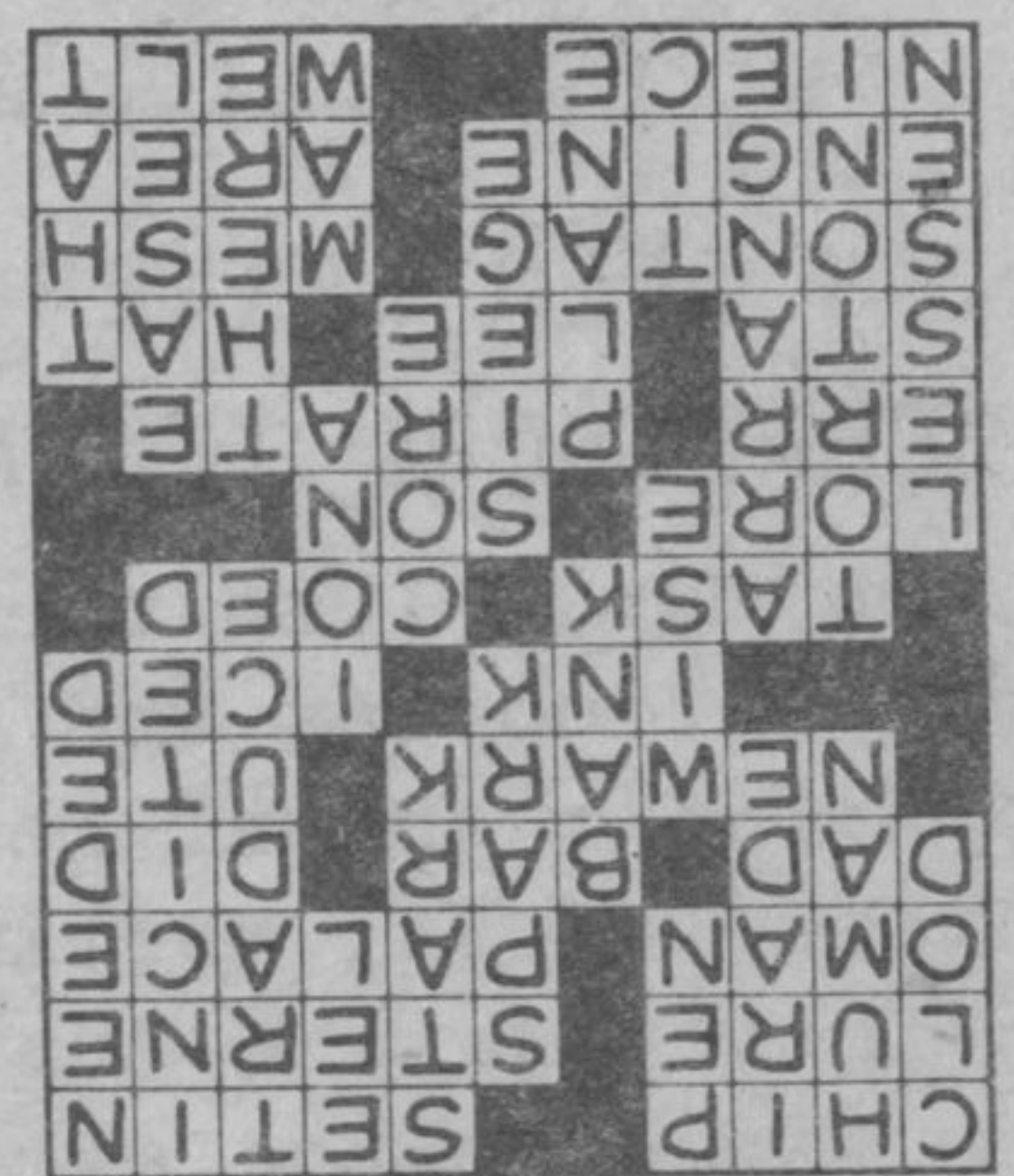
IN SCHREIBER AND TERRACE BAY AT

G. FIGLIOMENI & SONS

SCHREIBER

CROSSWORD PUZZLE

TODAY'S ANSWER



- | | | | |
|----------------------------------|------------------------|------------------------------------|-------------------------|
| ACROSS | DOWN | | |
| 1 Potato or poker | 1 Lumpkin | 18 Sagacious | 28 Kind of geometry |
| 5 Start (2 wds.) | 2 Mortal | 21 Inner Hebrides island | 29 I said it! |
| 10 Attraction | 3 Sultan's decree | 22 Trattoria's ice cream specialty | 30 Artistic need |
| 11 Novelist Laurence | 4 Confine | 23 Prepare | 34 "The Man - Got Away" |
| 12 Muscat and - | 5 - naked | 24 Nucleus | 36 Nervous twitch |
| 13 Sumptuous dwelling | 6 Clever convict (sl.) | 25 Minimize | 37 Stomach |
| 14 Pater-familias | 7 Calumniate | 26 Lay - to | |
| 15 Exclude | 8 Instigated | | |
| 16 Performed | 9 Considered a must | | |
| 17 New Jersey city | 11 Fiery particle | | |
| 19 Colorado Indian | 15 Kind of holiday | | |
| 20 Cuttlefish's concealing agent | | | |
| 21 Refrigerated | | | |
| 22 Put a strain upon | | | |
| 24 Campus belle | | | |
| 25 Traditional facts | | | |
| 26 Heir | | | |
| 27 Blunder | | | |
| 28 Plagiarize | | | |
| 31 Subway stop (abbr.) | | | |
| 32 Producer Shubert | | | |
| 33 Opera or top | | | |
| 35 Author, Susan - | | | |
| 37 Entangle | | | |
| 38 Locomotive | | | |

1	2	3	4			5	6	7	8	9
10					11					
12					13					
14				15				16		
	17		18					19		
			20				21			
	22	23				24				
25					26					
27				28				29	30	
31				32				33		34
35			36					37		
38								39		
40								41		