

# Classified Ads

MINIMUM CHARGE - \$2.00 (25 words & under  
cash in advance)  
- \$2.25 (if charged)  
5¢ per word after 25

**CARD OF THANKS** - The committee who helped Mary & Bill Schelling of Rosspport celebrate their 50th wedding anniversary on January 8th, wish to express their heartfelt thanks to all relatives and friends who donated in any way, with donations, baking, services in the hall, Henry Schreoder for his wonderful decorations. To L. Hubelit, M. Wahl and L. Leisander for supplying the music. Also Mary McEwen & Ida Cliff in Thunder Bay for their help. Without such generous and co-operative friends this party could not of been such a success. Thank you all.

Bob & Doris Krause, Prena Gerow, Patsy Campbell, Lil Schelling, Doris Legault, Ida Krause, Flo Fischer

**CARD OF THANKS** - We wish to express our deep gratitude and sincere thanks to our relatives and friends who helped make our 50th wedding anniversary such a happy occasion. To Rev. F. Meyer for the Mass on Saturday at Rosspport, the organist, soloist and those who helped arrange our delicious dinner. Special thanks to all who kindly remembered us with flowers, plaques, Florida airplane tickets, gifts, cards, telephone calls and personal greetings. A warm thanks to those who beautifully decorated the hall for our reception, donated in any way with baking and services. The musicians for supplying the wonderful music. Also the committee who arranged this delightful party for us on this occasion. To our relatives and friends from the east through to the west coast, up north and U.S.A., thank you for your thoughtfulness. Your friendship means so very much to us both. Bless you all.

Mary & Bill Schelling

**CARD OF THANKS** - The Schreiber Arena Building Fund Committee wishes to thank Mrs. J. Smart and Mrs. J. Crook of the Schreiber Community Bingo for their most generous donation of \$1200.00 raised from their Bingo, to our new Arena Building Fund.

**CARD OF THANKS** - To all our friends of Terrace Bay and Schreiber. Due to illness (Mrs. Comeau) we were unable to send Christmas Cards to all our friends in Terrace Bay and Schreiber. We wish you all the best in the New Year. Josephine & Beniot Comeau, Church Point, N.S.

## FREE 1977 SEED AND GARDEN CATALOGUE

BEAUTIFULLY  
ILLUSTRATED

Complete List of Flower and  
Vegetable Seeds, Lawn Seeds,  
Garden Supplies, Etc., Etc.  
Clip Out and Mail Today!

ONTARIO SEED CO. LTD.  
BOX 144, WATERLOO, ONT.

Name .....

Address .....

Prov. ....

# BUSINESS DIRECTORY

## i. m. dodick

R. O.

OPTOMETRIST

1119 VICTORIA AVENUE  
THUNDER BAY  
PHONE 622-7726

FOR ALL YOUR  
PHOTO COPYING  
AND  
COMMERCIAL  
PRINTING

CONTACT THE  
TERRACE BAY NEWS

## BIRCH GROVE MOTEL

D.A.A. APPROVED

- Group & Family Rates 316 Walker Street,
- Daily & Weekly Rates Schreiber, Ontario
- Fully Modern Kitchens
- Cable T.V. - Plug Ins **824-2800**

## BAXTER INSURANCE AGENCY LTD.

K.J. WEPPLER - AGENT

WITH 22 EXPERIENCED COMPANIES TO SERVE YOU  
AUTOMOBILE - FIRE - CASUALTY - LIFE  
SIMCOE PLAZA - TERRACE BAY  
PHONE 825-3370

## FILANE'S FALLEN ROCK MOTEL

WHITE SAND LAKE LOCATION  
Newest Motel in the Area  
Rooms-Furnished apartment available  
Phone 824-2004 824-2782

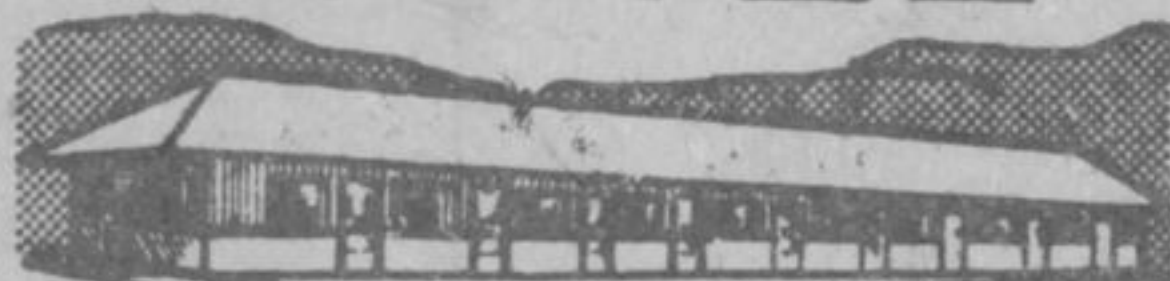


Thunder Bay (Alpine) . . . . 577-6426  
Terrace Bay . . . 825-3286 Red Lake . . . . 727-2858  
Marathon. . . . 229-1213 Fort Frances . . . 274-7721

RESERVATION CENTRE  
(807)577-6426  
TELEX: 073-4360

OR  
CALL YOUR TRAVEL AGENT

## Nor-West MOTEL



CAA & AAA APPROVED FAMILY RATES

Clean Quiet Cosy

"On Ground Level Only"

CABLE & COLOR TV - ELECTRIC HEAT  
YEAR ROUND COMMERCIAL RATES

HWY 17 N W  
SCHREIBER **824-2501**

WEST ENTRANCE  
IF BUSY CALL **824-2800**