

Marsh World

Ducks Unlimited (Canada)

WHAT A DUCK SEES

- The duck's eyes are set relatively high in the head and are so placed that the bird has a remarkably wide range of vision.
- With its head facing forward the duck can still see objects in front and behind.
- The head from above, shows that the eyes can see upward at a considerable angle. A duck flying at an altitude of 82.5 feet has a breadth of vision of 24 miles, and at 2,000 feet this is increased to 118 miles.*

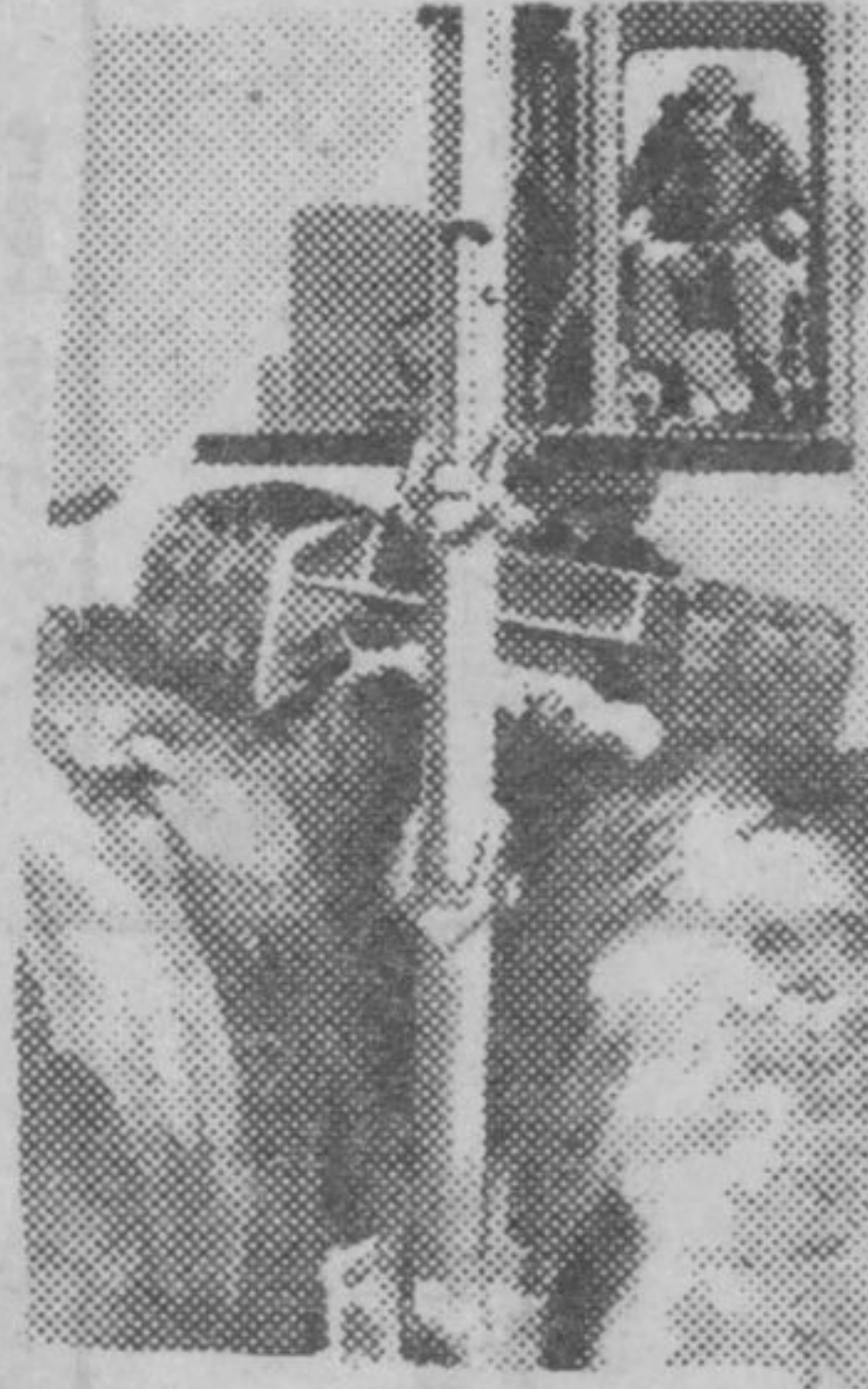
* From Dr. H. A. Hochbaum "Travels and Traditions of Waterfowl."

157 - '76



HOUSE FOR SALE

Three bedroom home in Schreiber, remodelled interior and exterior. New carpets and flooring throughout. Garage at rear of property. Please call Shawn or Wendy at 824-2552 after 5:30 p.m.



Any Schreiber residents wanting building sewer hook-ups contact:

**KEN DOOLEY
BULLDOZING**

824-2742

Free estimates. We supply material and labour by the hour or by the foot.

**WHAT DO YOU
SAY WHEN A
STUDENT ASKS YOU
FOR A JOB?
YOU'RE HIRED.**

**HAVE A YOUNG
SUMMER:
HIRE-A-STUDENT.**



Manpower
and Immigration

Robert Andras
Minister

Main-d'œuvre
et Immigration

Robert Andras
Ministre

Contact: LARRY FRASER - 825-9296