

L.A. TO LEGION #223

General meeting of the Ladies Auxiliary Branch #223 was held on April 21st. Tea Williams was accepted as a new member and initiated. Minutes of the March meeting were read followed by the treasurer's report.

Correspondence was read with an invitation to a Schreiber Birthday party on May 24th. Fishing to go can sign their name at the store by May 1st.

Gusul gave a favourable report on the condition of the kitchen.

Plans for the Public and Separate School were discussed. It was passed to give a donation to the Cancer Society.

It was passed to purchase a full length rug with J. Gunter in charge.

Legion Bowling Wind-up is May 30th with refreshments and music by D. Moore. All members welcome.

Next general meeting is May 19th and the date is at 7:30 p.m. instead of 7 p.m. The meeting was adjourned.

Terrace Bay Ladies Curling Club is pleased to announce the winner of their Coloured Ball was Mrs. Mary Clare Kennedy.

KIMBERLY-CLARK PUBLIC MEETING HELD IN LONGLAC

Kimberly-Clark of Canada Limited's expanded woodlands operations will add another 475 jobs in the Longlac-Geraldton-Nakina area when its enlarged bleached softwood kraft mill at Terrace Bay goes on stream in late 1977. In addition, the woodlands staff at Terrace Bay will increase by 50 people.

The expansion program will bring total woodlands employment to 1,155 and virtually double production from its woodlands operations, Kimberly-Clark of Canada President Grant Puttock told a public meeting in Longlac.

The meeting, held in the Longlac Royal Canadian Legion Hall, was initiated by Kimberly-Clark to review plans for its development project, which will increase production at its Terrace Bay pulp mill from 435 tons per day to 1,250 tons per day. The enlarged mill will provide jobs for an additional 150 people, bringing the mill employment to 650.

A similar meeting will be held at the Geraldton Composite High School auditorium Tuesday night.

Purpose of the meetings is to discuss the effects the expansion program will have on the residents of both communities. To help evaluate the impact of the development in the area, continued page 21

**THE ROUTE ESSO SCHREIBER
ANNOUNCE
LOW PRICES
YOU NEVER THOUGHT
YOU'D FIND ON
QUALITY ATLAS TIRES.
EVERYDAY.**

**ATLAS
CUSHIONAIRE**

4 ply nylon bias

**ATLAS
MK. II**

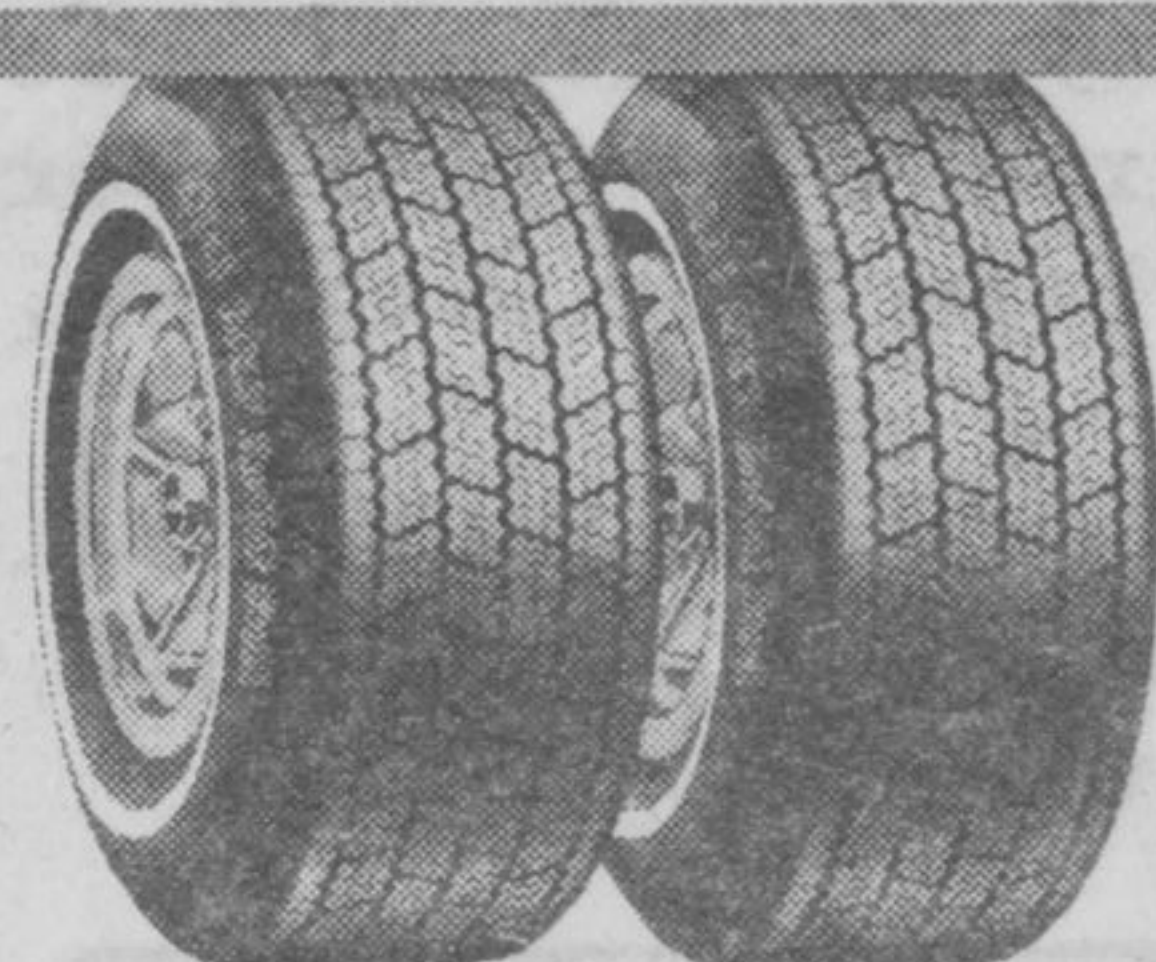
Polyester / Fibreglass Belted

- Quality features at low Atlas prices** with some features of higher priced tires at down-to-earth prices
- low profile for stability and cornering
 - latest wider tread design for improved grip and traction
 - sizes for import, compact and larger domestic cars

SIZE	TWO TIRES OR MORE EACH *	ONE TIRE *
520S-10	18.95	20.95
550S-12	19.95	21.95
600S-12	20.95	22.95
560S-13	22.95	24.95
600S-13	22.95	24.95
650S-13	23.95	25.95
700S-13	24.95	26.95
590S-14	23.95	25.95
560S-15	23.95	25.95
600S-15	24.95	26.95
A78-13	23.95	25.95
B78-13	24.95	26.95
C78-13	25.95	27.95
C78-14	25.95	27.95
F78-14	26.95	28.95
G78-14	26.95	28.95
F78-15	26.95	28.95
G78-15	28.95	30.95
H78-15	30.95	32.95

- Our quality belted tire**
- the Atlas answer to belted original equipment requirements
 - wide tread combined with fibreglass belts provides good traction, handling plus extra miles of cool running
 - improved hazard protection
 - polyester for a soft ride and minimum flat spotting

SIZE	TWO TIRES OR MORE EACH *	ONE TIRE *
A78-13	26.95	28.95
C78-14	29.95	31.95
E78-14	30.95	32.95
F78-14	31.95	33.95
G78-14	32.95	34.95
H78-14	34.95	36.95
C78-15	30.95	32.95
F78-15	31.95	33.95
G78-15	33.95	35.95
H78-15	35.95	37.95
J78-15	40.95	42.95
L78-15	41.95	43.95



**ATLAS
MK.V** RADIAL STEEL

BR70 13 WHITEWALL
52.95 OR LESS EACH
2 OR MORE

Everything you expect from Atlas. And more

- radial design keeps full tread width on road even during high speed cornering, for safer handling
- less rolling resistance
- greater carcass strength, reinforced by a steel belt, gives you maximum resistance to road damage

Note: metric sizes available in Nylon Rayon belts. Different tread design than illustrated.

SIZE	TWO TIRES OR MORE EACH *	ONE TIRE *
155SR-12	44.95	48.95
165SR-13	45.95	49.95
175SR-13	48.95	52.95
165SR-14	48.95	52.95
165SR-15	48.95	52.95
BR70-13	52.95	56.95
ER70-14	57.95	61.95
FR70-14	59.95	63.95
GR70-14	60.95	64.95
GR70-15	61.95	65.95
HR70-15	63.95	67.95
LR70-15	75.95	79.95

This is not a sale. What we're doing for you is far more exciting than any on-again, off-again sale. We've taken all our quality Atlas tires... the same famous name we've been selling for over 40 years... and we've lowered the price on all Atlas summer passenger tires well below our previously suggested retail prices, when you buy in pairs.

And that's where they'll be staying. Low... every day.

Which means, from now on, you don't have to wait for a sale. You can visit your nearest participating Esso Retailer any time and get the tire quality you've always wanted at Atlas prices you never thought you'd find. Atlas quality at low prices. Every day.

FOR AN EXTRA CHARGE HAVE YOUR TIRES INSTALLED AND BALANCED BY YOUR ESSO RETAILER.

Each Atlas tire carries the Imperial Oil guarantee. Put your purchase on your Esso credit card, or, at most Esso Stations, use your Chagex or Master Charge card.

* You pay prices quoted or less at participating Esso Retailers.

