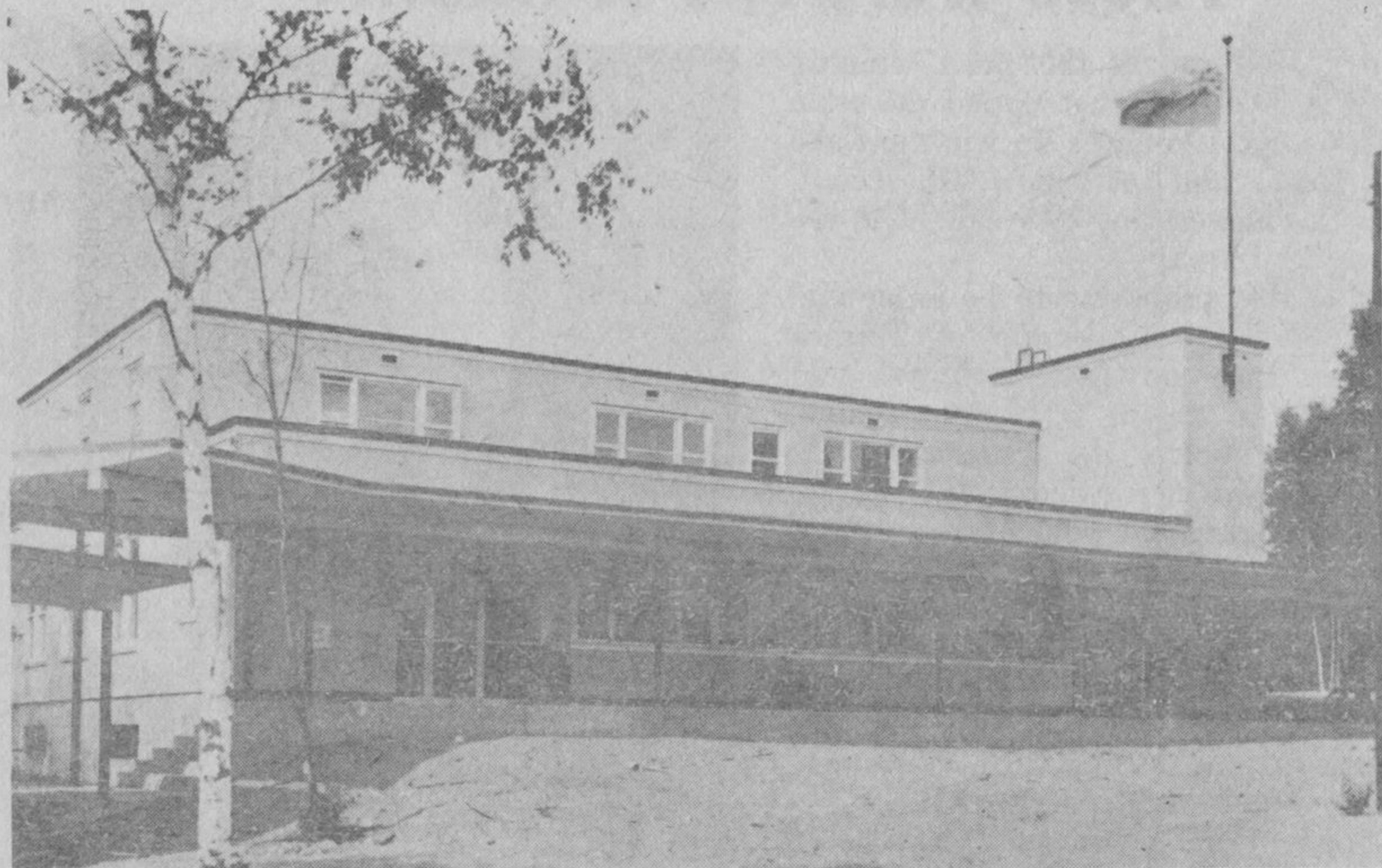


» TERRACE BAY«



THE NEW DOMINION public building housing the postoffice is modern in design and conforms to the architectural pattern of the shopping centre and Terrace Bay's other buildings.

Terrace Bay Wins Safety Contest

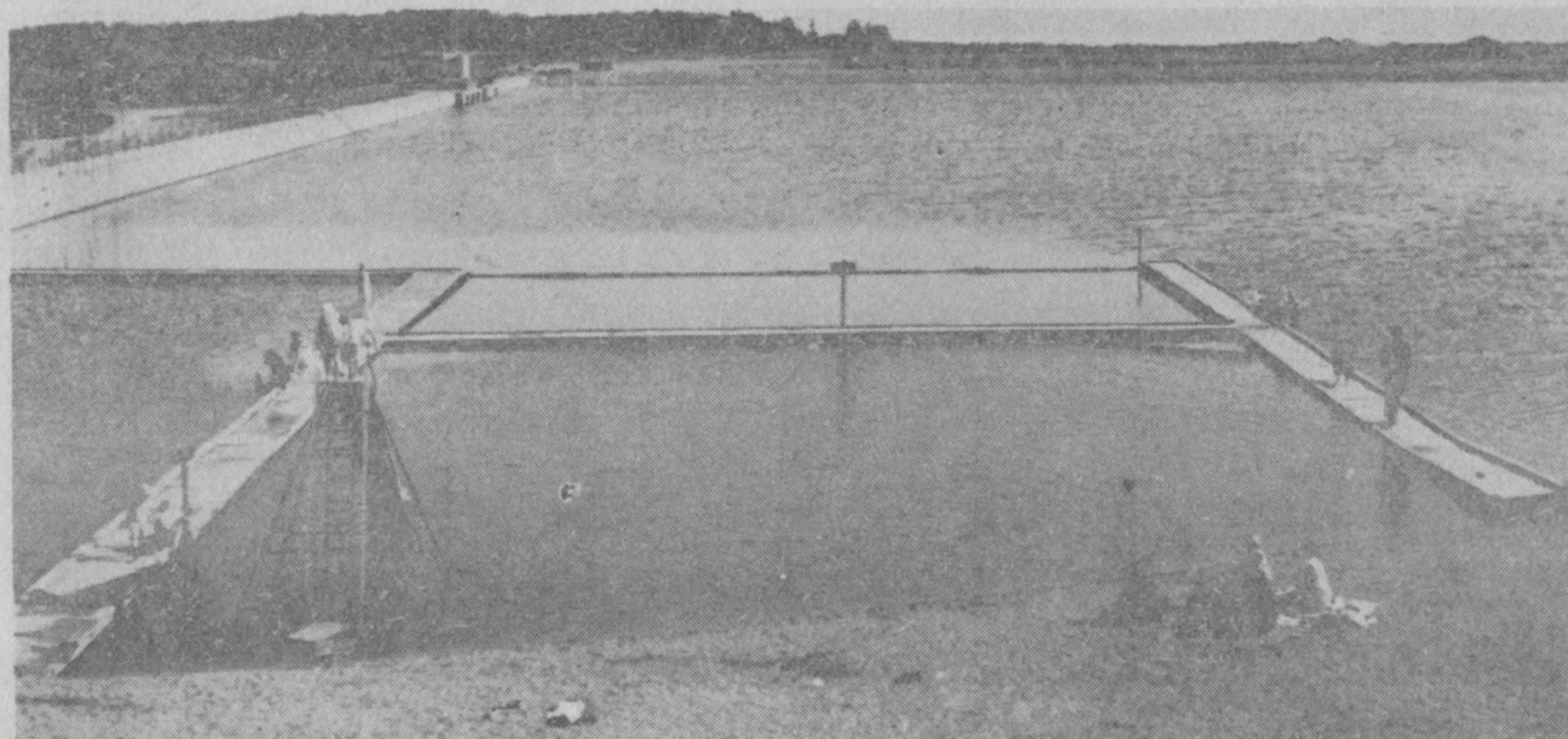
During the six month period from February 1 to July 31 a Safety Contest involving 11 pulp and paper mills from Marathon to Kenora and Fort Frances was sponsored by the Northwestern Branch of the Ontario Pulp and Paper Makers' Safety association.

The Terrace Bay Mill of LongLac emerged as winners of this contest and will hold the trophy until completion of another 6-month contest slated to run until next March 1.

The trophy was presented at a Branch Meeting of the Safety Association held

MILL	MAN HOURS	LOST TIME ACC.	FREQ. RATE
LongLac-Terrace Bay	705,162	1	1.41
Abitibi-Fort William	329,581	1	3.03
Marathon-Marathon	924,610	5	5.40
Ont.-Minn. (Kenora)	673,493	4	5.93
Great Lakes-Fort William	1,211,662	12	9.90
Dryden-Dryden	601,753	6	9.97
Provincial-Port Arthur	586,732	8	13.63
Abitibi-Port Arthur	480,430	8	16.65
Brompton-Red Rock	539,710	9	16.67
Ont.-Minn. (Fort Frances)	914,528	17	18.58
Brompton-Nipigon	80,502	4	49.68
MILL TOTALS	7,048,163	75	10.64

TERRACE BAY's "swimming hole" is just above the hydro-electric dam in the Agusabon river. It is divided in three sections, has regular supervision and morning bus service to and from the pool.



in Port Arthur by F. R. Brown, Mill Manager of Abitibi's Port Arthur division, to Fred Soughton, LongLac's Services and Safety Supervisor.

In winning the contest LongLac's frequency rate for the six month period was 1.41. During the period only one disabling injury occurred.

Curlers Prepare

Lots of action going on these days over at the Curling Rink. As all curlers probably know by now, the old Laundry building has been moved adjacent to the rink to serve as a clubhouse this winter. It is set up in position, and drain and sewage pipes installed. The entire inside of this building has been completely stripped of old partitions, counters, etc., and the preliminary stages have been completed for the renovations to make the place look like a clubhouse that we'll be proud of. The outside walls of both buildings have been cut to allow for the construction of a connecting corridor.

How did all of these and other things get done?—Why, by volunteer labour of course! Any night that you feel that you'd like to lend a hand, just put on your dun-garees and wander over.

The annual general meeting of the Curling Club was held October 1 in the Clubrooms.

LongLac Century Club

(Standings as of midnight October 10, 1951.) The Century Club is comprised of all units with 100 or more consecutive safe days without an on-duty disabling injury.

UNIT	SAFE DAYS
1. Administration Office	1063
2. Hotel	1063
3. Warehouse	1063
4. Electrical	1063
5. Technical	1063
6. Bleachery	1063
7. Hospital	1063
8. Steam and Recovery	1031
9. Dig. Brown Stock Screens	999
10. Buildings and Grounds	990
11. Machine Room	657
12. Jackladder (seasonal)	641
13. Structural	586
14. Kiln, Caustic, and Evaps.	511
15. Service Operations	489
16. Mechanical	424
17. Woodyard	385
18. Pipefitters	277
19. Engineering Office	275
In the Dog-House Wood Room	82
Mill Total	82