

## ENGAGEMENT ANNOUNCEMENT

Mr. and Mrs. H.J. Boudreau are pleased to announce the engagement of their daughter Lita Marie to Mr. Lyle Nicol son of Mr. and Mrs. Mel Nicol of Terrace Bay.

The wedding will take place Saturday, June 29th, 1974 in St. Martin of Tours Roman Catholic Church, Terrace Bay at 5 o'clock

## your week ahead BY DR. A.W. DAMIS

Forecast Period: June 16 to June 22

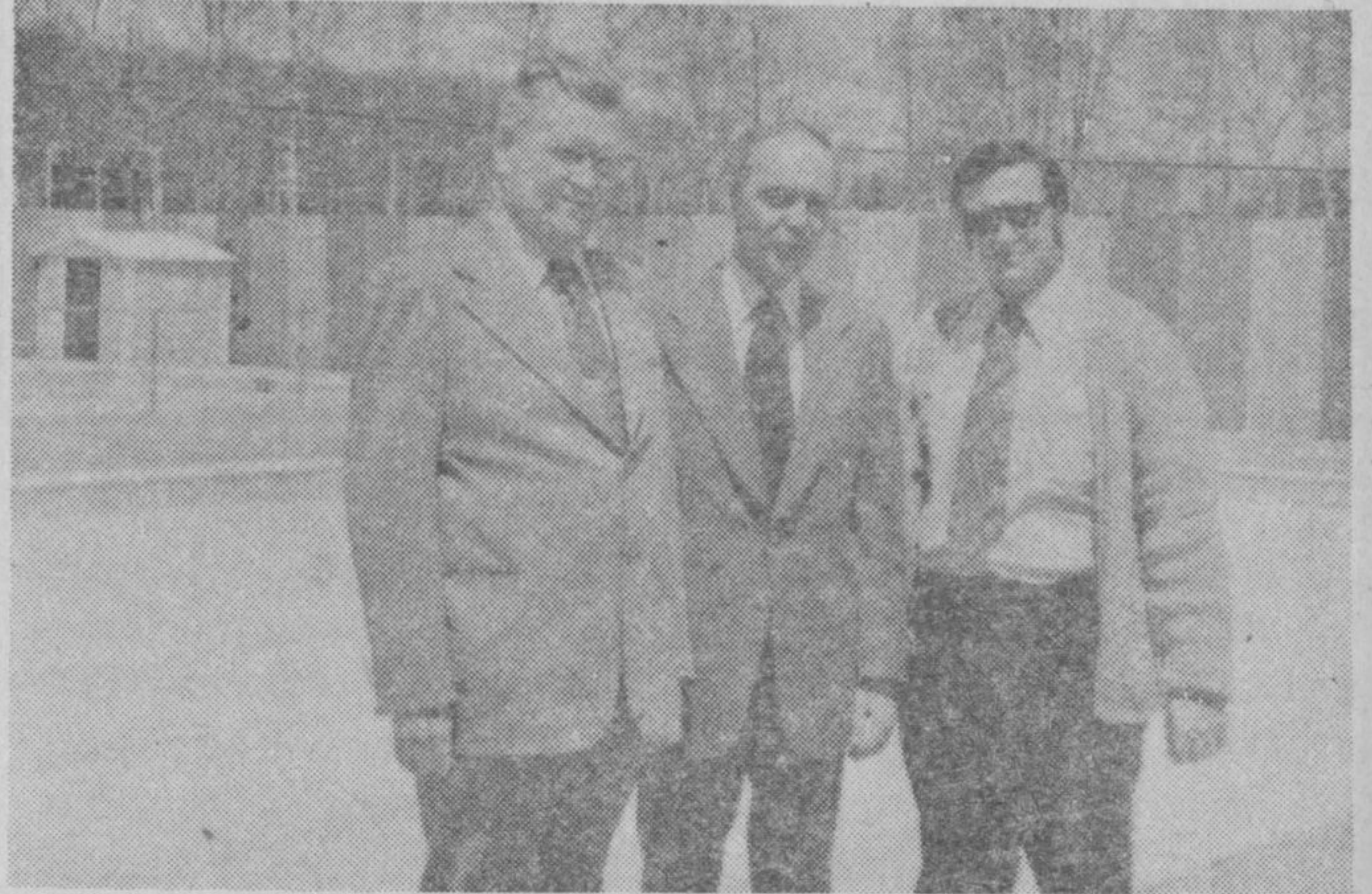
- ARIES**  
Mar. 21 - Apr. 19  
Bluntly, this week might find you taking every wrong direction. It's not a good time to make a major decision—about a member of the opposite sex.
- TAURUS**  
Apr. 20 - May 20  
Remember, there is no repeal to the "Law of averages." Meaning? According to your chart, you have been doing traffic with a troublemaker . . . look for problems!
- GEMINI**  
May 21 - June 20  
This week you might dwell on the point of recruiting new friends, including the opposite sex. Most members of your sign have become, socially stagnant!
- MOONCHILD**  
June 21 - July 22  
As the saying goes: Good fortune sometimes takes strange avenues. Meaning? What is seemingly a blunder, will in fact, turn out to be a lucky break!
- LEO**  
July 23 - Aug. 22  
Your moodiness might upset several of your associates. Actually, a few of your bad traits will come into play, "needling" a friend, to name one.
- VIRGO**  
Aug. 23 - Sept. 22  
Many members of your sign will find a familiar face, leaving the scene. There, also, should be several changes in your daily routine.
- LIBRA**  
Sept. 23 - Oct. 22  
Much, much too much, emphasis could be put on joining a group. Please review your motives for becoming involved in outside activities. Be honest with yourself.
- SCORPIO**  
Oct. 23 - Nov. 21  
Take special care with what you write or say over the phone. Your chart shows, a casual remark, by you, being used as the origin of malicious gossip.
- SAGITTARIUS**  
Nov. 22 - Dec. 21  
Apparently, a co-worker or routine associate feels, secretly, that your opinions affect their well being. Prepare for an unexpected reprisal, and a possible loss of cooperation.
- CAPRICORN**  
Dec. 22 - Jan. 19  
Please, don't feel secure in the "lip service" you'll receive from a close associate. Animosity lies beneath that veneer of warmth and friendliness.
- AQUARIUS**  
Jan. 20 - Feb. 18  
Many under your sign will be blessed with the good fortune of having a second chance. Meaning? A project you have neglected, will be revived.
- PISCES**  
Feb. 19 - Mar. 20  
This week, moral gains rather than material advantages are in the offering. Also an improved relationship with members of the other sex, shows in your chart.

### PERSONALITY PROFILE

For your Sun Sign Analysis, send the day, month, year and place of birth, plus \$1.00 for postage and handling to Dr. Andrew W. Damis, P. O. Box 12766, St. Petersburg, Florida 33733.

### Official Opening - continued

Gerry Dupas (right) Director of Recreation for Terrace Bay took Jim Symington, Vice-Chairman Board of Directors and Hon. Rene Brunelle Minister of Community and Social Services on a tour of the Recreation Facilities in Terrace Bay.



Reeve Roy Bray welcoming everyone to Birchwood Terrace's Official Opening.



## PROCLAMATION

The Council of the Corporation of the Township of Terrace Bay at a meeting held on Tuesday, May 28th, 1974 resolved that

JUNE 16 to 22, 1974

shall be observed as "Senior Citizens' Week"

In compliance with the foresaid resolution, I hereby proclaim June 16 to 22, 1974 as "Senior Citizens' Week" in The Township of Terrace Bay.

W.R. Bray,  
Reeve.