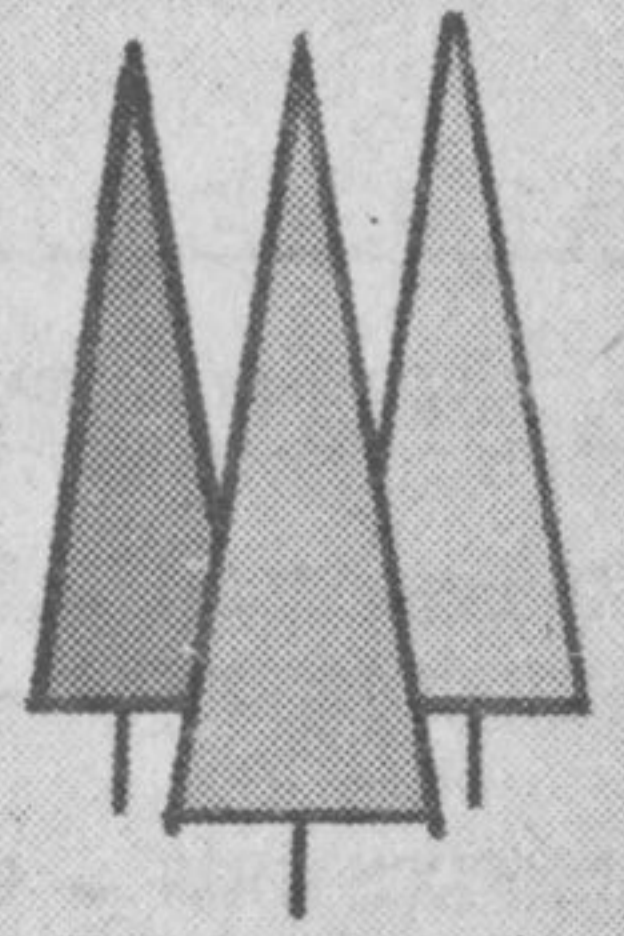


TERRACE BAY NEWS

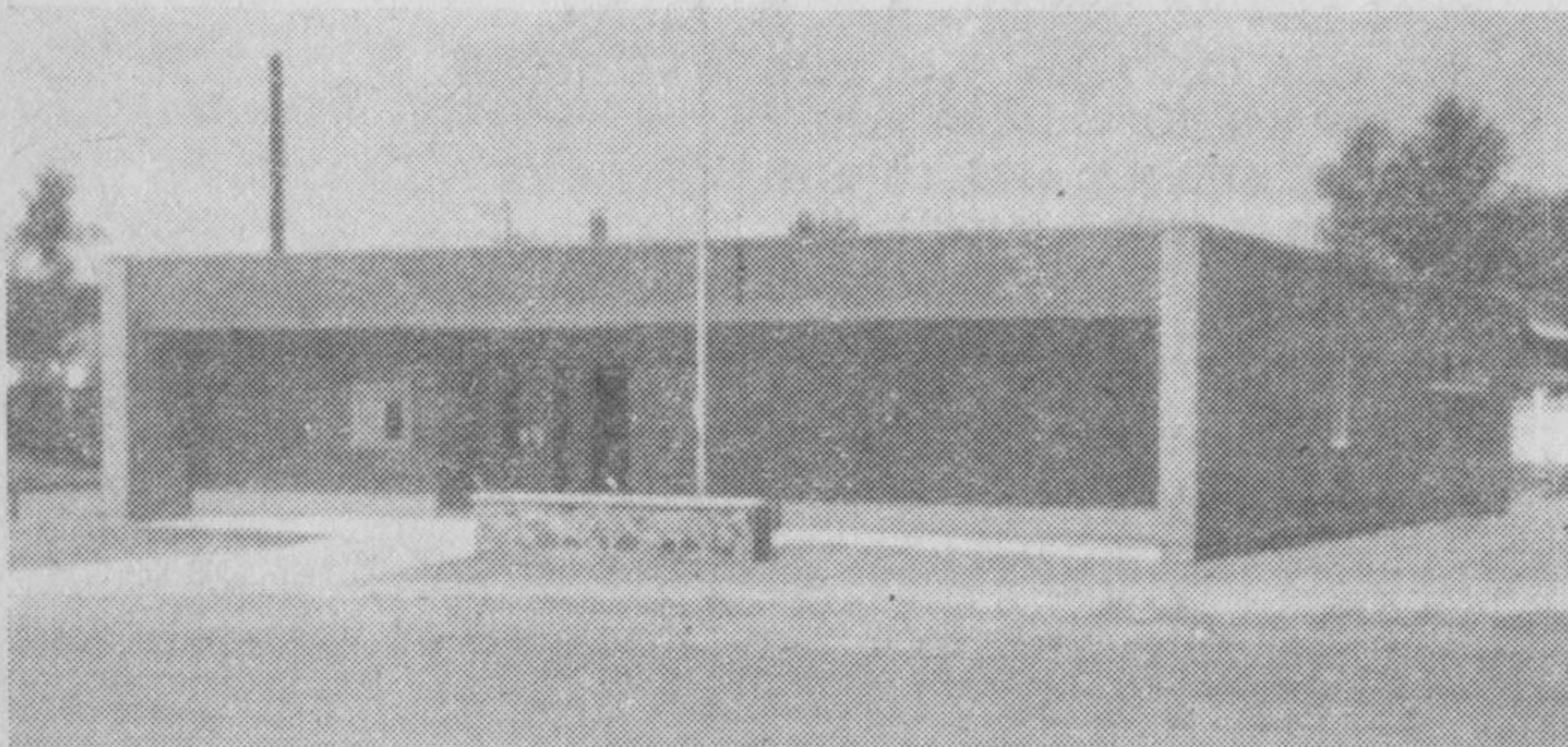


Vol. 16 No. 25

June 27, 1973

15¢ Per Copy

SCHREIBER POST OFFICE



Schreiber's new post office opened on June 18th with no fanfare but was the busiest place in town that day, with old customers coming to inspect the new quarters, exchange the old box keys for new ones, and, find out where the new box was - with many new customers having the privilege of renting a box, at last.

The new building, is still on the main street, almost directly across from the former one, and the entrance at street level - a great convenience. Actually, several other sites were considered, but the postal authorities sur-rendered to public demand and kept it in the area of the bank, town office, library and stores, enabling older citizens to make one trip suffice for many errands.

The \$106,000 contract was awarded to the J. Anderson Construction Co., Thunder Bay, provided a one story, woodframe building, measuring 50 by 90 feet on a concrete slab and has a brick veneer finish. The building has drywall ceiling and walls with asbestos tile floor. There is a postal supply room, with postmaster's office for files, etc., oil heating, humidifying system, excellent space for the office proper, trucking entrance, the furnace room and

continued page 7

CANADA DAY PROGRAMME

As has been stressed in previous weeks the family is invited to attend and participate in as many of the Canada Day events as possible.

The final programme is as follows:

Friday, June 29th - 8:30 p.m. - 1:00 a.m.
Canada Day Adult Dance
Moose Hall

Music supplied by the Rhythme Kings
As previously advertised, tickets went on public sale, Friday, June 22nd.

Saturday, June 30th - 1:30 p.m. - 4:00 p.m.
Children's Foot Races
Athletic Field

Prizes will be awarded for first, second and third place winners. Races are for children 2-13 years of age inclusive. Races will be run in year to year age groups. In case of inclement weather races will be held in the Memorial Arena.

Saturday, June 30th - 9:00 p.m. - 12 midnight
Youth Dance
Music supplied by Black Lightning
Admission \$1.00 per person
Memorial Arena

SUNDAY, JULY 1ST 10:00 a.m. - 11:30 a.m.
Cycling Event

Sunday, July 1st should be an exciting day for cycling enthusiasts. Many people are participating in this first Canada Day Cycling Event of Terrace Bay for both men and women. Lots of planning has gone into this event with the St. John Ambulance station located in three different places on the circuit. A repair depot is also to be on route for a quick tire change.

continued page 2