



**1973 DODGE POLARA**

2 door hardtop - 318 cu. in. motor - automatic trans. - power steering - power brakes - A.M. radio - heavy duty battery - block heater - white wall tires - deluxe wheel covers - heavy duty suspension and sway bar - vinyl roof

STOCK # D.L. 23-273

**SALE PRICE \$4356.00**

**1973 DODGE DART**

2 door Sport Coupe - Big 6 cylinder - 225 cu. in. motor automatic transmission - power steering - heavy duty battery - block heater - A.M. radio - remote control door mirror - white wall tires - deluxe wheel covers and fold down rear seat and trunk dress up

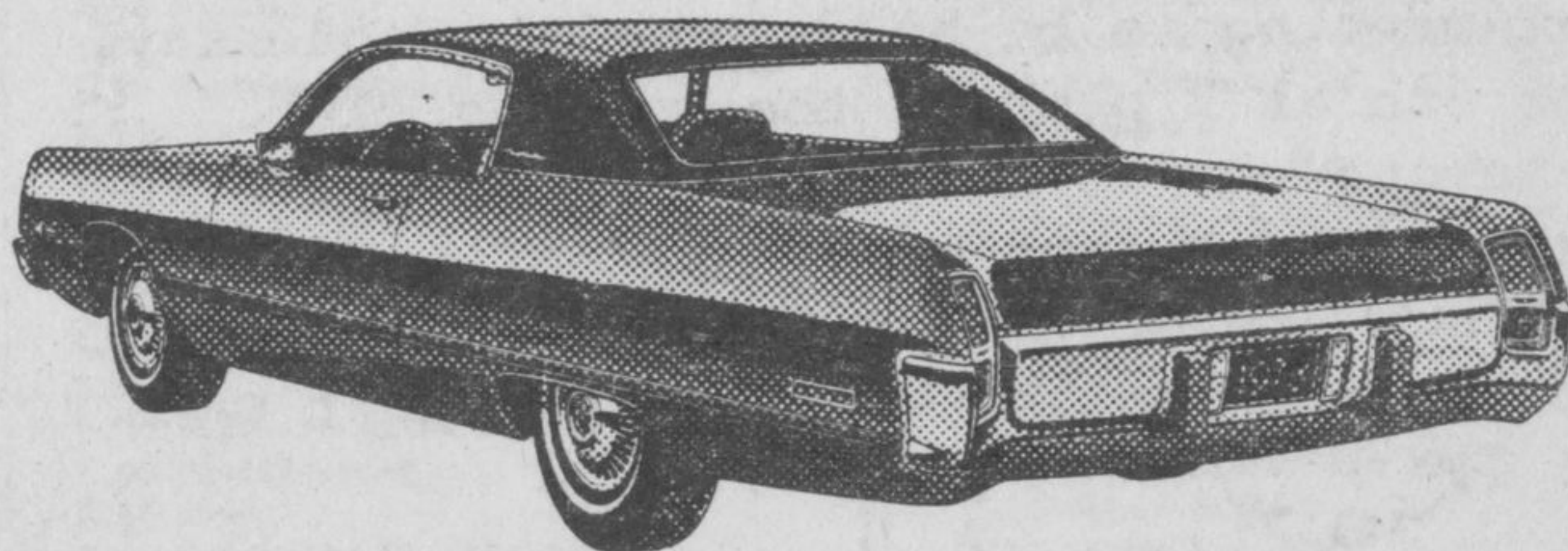
STOCK # LL 29-273

**SALE PRICE \$3613.00**

**1973 CHRYSLER NEWPORT**

2 door hard top - 400 cu. in. motor - automatic transmission - power steering - power brakes - A.M. radio - white wall tires - heavy duty battery - remote control door mirror - block heater - rear window defogger - electric clock heavy duty suspension and sway bar - heavy duty shocks - vinyl roof - air conditioning - Spring Special colour and trim

STOCK # C.L. 23-473



**SALE PRICE \$5435.00**

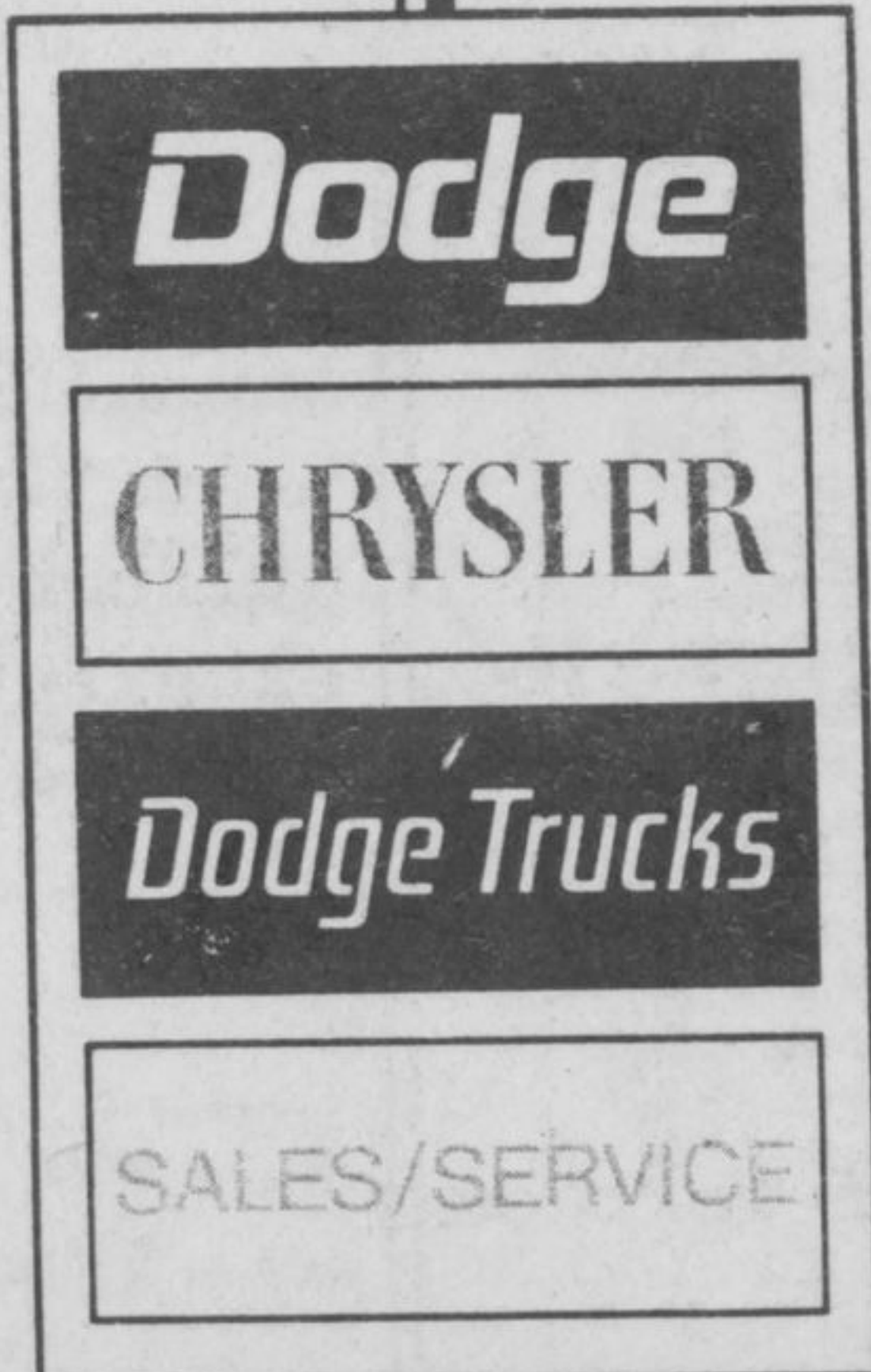
SEE LEO RAJOTTE AT  
**ELGAR WRIGHT MOTORS LIMITED**  
 SERVING NIPIGON, TERRACE BAY AND SCHREIBER  
 CALL LEO AT THE SCHREIBER LOT 824-2329 IN TERRACE BAY 825-3898

**1973 DODGE MONACO**

4 door hardtop-360 cu. in. motor-auto. trans.-power steering-power brakes-white wall tires-heavy duty battery-remote control door mirror-block heater-A.M. radio-rear seat speaker heavy duty suspension and sway bar heavy duty shocks-deluxe wheel covers 50/50 split bench front seat-centre arm rests and passenger reclining seat-also BROUGHAM PACKAGE-includes vinyl roof, trunk dress up, sill moulding - Brougham nameplate

STOCK # D.P. 43-273

**SALE PRICE \$5119.00**



**1973 DODGE DART**

Custom - 4 door sedan - 318 V/8 motor - automatic transmission - power steering A.M. radio - white wall tires deluxe wheel covers - heavy duty battery - block heater remote control door mirror

STOCK # L.H. 4I-373

**SALE PRICE \$3866.00**