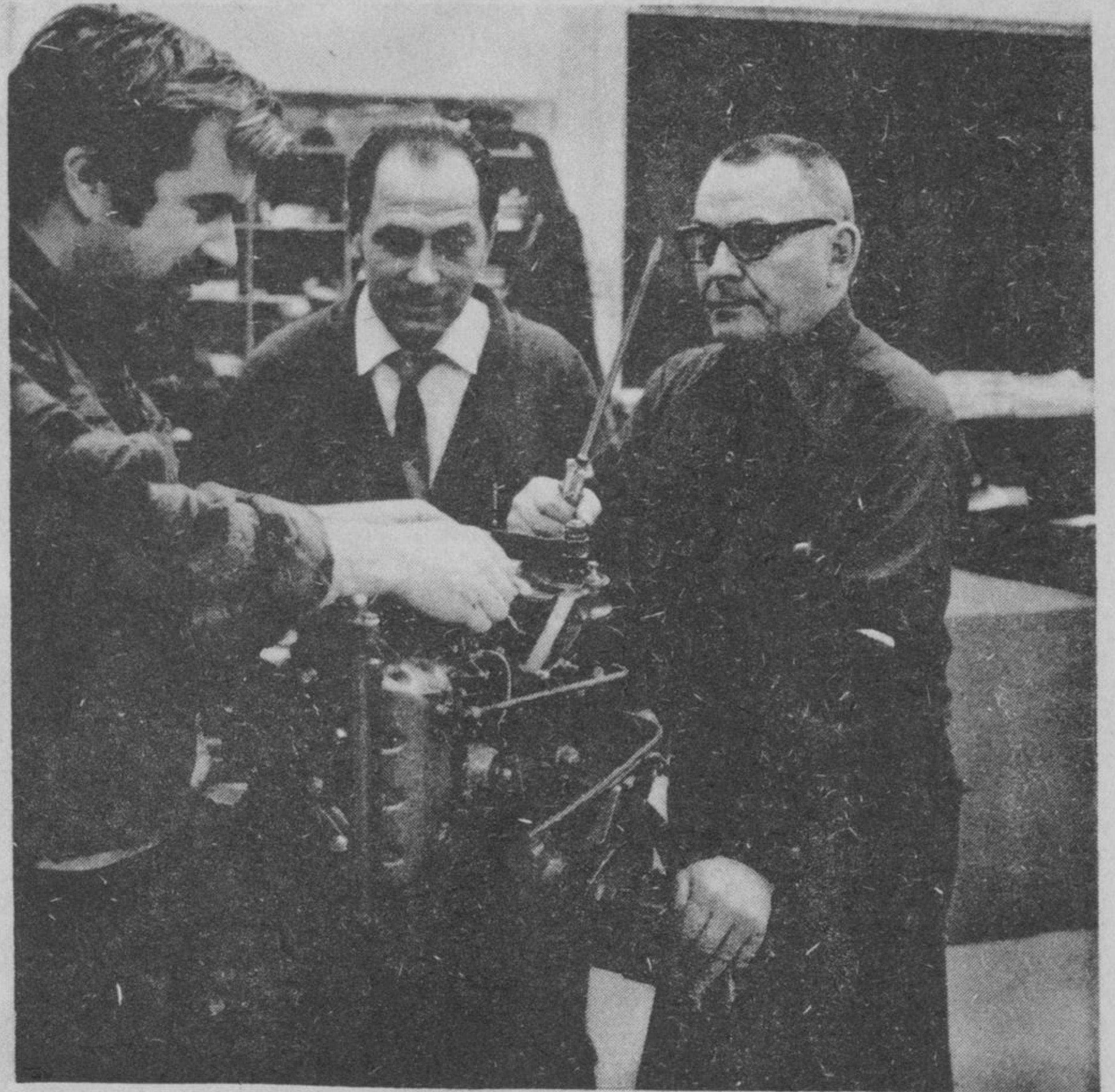


TERRACE BAY HIGH SCHOOL EVENING CLASSES - cont'd from pg. 1



RECREATION TIPS - Cont'd from page 16 ...
 spite of extremely cold temperatures. Consequently, many Ontario lakes have been unsafe for snowmobiling or even travel by foot. During the next month as spring approaches, increased hours of daylight and warmth of sun will increase the flow of water and currents which will bring even greater hazards.
 The Ontario Safety League urgently warns snowmobilers who have been using trails over ice-covered lakes not to take them for granted during the next month. Check ice conditions and depth frequently, in fact, every time you go out from now on is advisable. At the first sign of ice honey-combing or reducing in depth, forget about lake travel and stay
 continued on page 18 ...