

ARENA SCHEDULE - Cont'd from page 8 ...

MARATHON vs TERRACE BAY

- 12:30 - Minor Peewees
- 1:30 - Major Peewees
- 3:00 - Bantams
- 4:30 - Midgets
- 7:30 - 9:00 Public Skating

Sunday, December 13th -

- 1:00 - 6:00 Figure Skating
- 7:00 - 9:00 Marathon Mercuries vs Terrace Bay Superiors

Monday, December 14th -

- 1:30 - 3:30 Matinee Skating
- 4:00 - 5:00 Figure Skating
- 6:00 - 8:00 Mustangs vs Cougars
- 8:00 - 9:00 Midgets
- 9:00 - 10:30 Juniors Practise

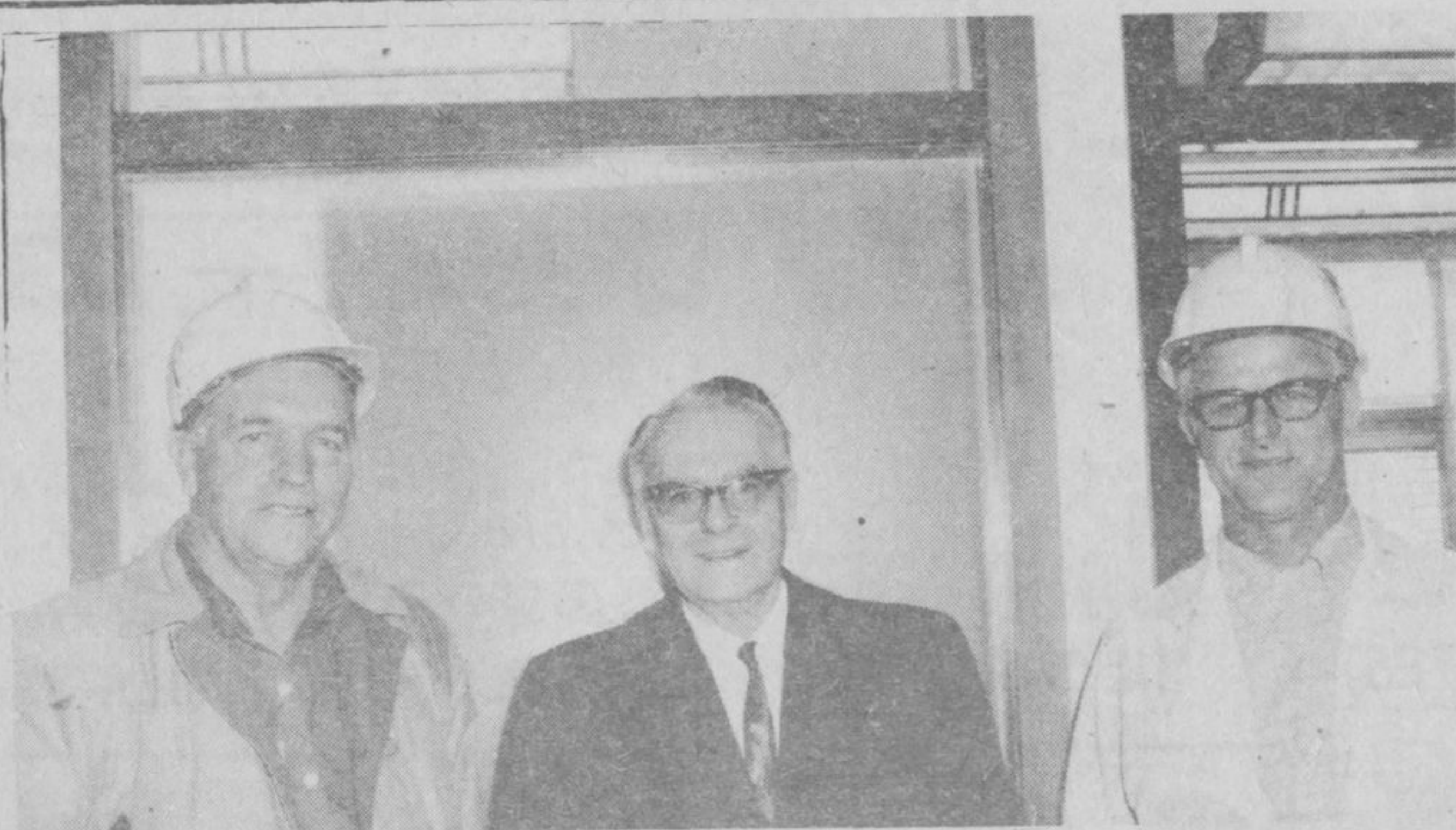
Tuesday, December 15th -

- 1:30 - 3:30 Matinee Skating
- 4:00 - 5:00 Ringette
- 5:00 - 6:00 Hawks vs Falcons
- 6:00 - 7:00 Peewee Allstars
- 7:00 - 8:00 Bantams
- 8:00 - 10:00 Commercial Hockey

Wednesday, December 16th -

- 1:00 - 3:00 Matinee Skating
- 4:00 - 6:00 Figure Skating
- 6:00 - 9:30 Figure Skating
- 9:30 - 10:30 Juniors Practise

FRANK GINN TAKES EARLY RETIREMENT



Frank Ginn, centre, with John Mikus and Hector McLeod.

On December 4, 1970, Frank Ginn received a disability pension from Kimberly-Clark Pulp and Paper Company Ltd.

He started to work on April 18, 1951, with the Engineering Structural crew. In August he transferred to the job of Watchman, which job he held when



The Kinsmen Club  
of Schreiber



WISHES TO ANNOUNCE THAT  
**all tickets for the  
NEW YEAR'S EVE DANCE**  
on  
THURSDAY  
**DECEMBER 31st, 1970**

HAVE BEEN PURCHASED.

WE THANK YOU FOR YOUR PATRONAGE  
AND LOOK FORWARD TO YOUR SUPPORT.

Season's Greetings



Your Kinsmen Club



he actually ceased work on August 6, 1970.

John Ferrier, Jack Chapman, Al Chisholm, John Mikus and Hector McLeod were in attendance when Frank was presented with his pension.

Best wishes for a long and healthy retirement were extended to him.

Mr. and Mrs. Ginn with their daughter, Catherine will continue to reside at 198 Laurier Avenue, Terrace Bay.

ORDER YOUR B.C. CHRISTMAS HOLLY NOW!

Mrs. W. McKechnie on behalf of the Navy League will accept orders now for B.C. Christmas Holly which will be arriving DECEMBER 19TH.

Simply call Mrs. McKechnie at 3650 from 6:30 p.m. until 9:00 p.m. any evening.

HELP THE NAVY LEAGUE AND WRENETTES BY ORDERING YOUR HOLLY NOW.

It's a great pity that things weren't so arranged that an empty head, like an empty stomach, wouldn't let it's owner rest until he put something in it.